

**DRAWING LIST**

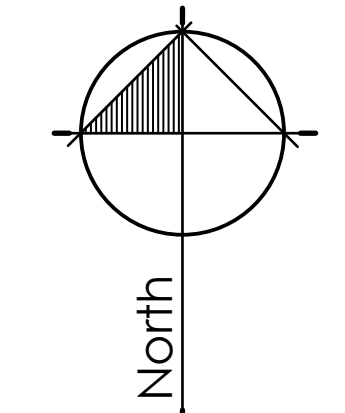
L-1	LANDSCAPE PLAN_LEVEL 1	1/8" = 1'-0"
L-2	LANDSCAPE PLAN_LEVEL 2	1/8" = 1'-0"
L-3	LANDSCAPE SECTIONS_1	1/4" = 1'-0"
L-4	LANDSCAPE SECTIONS_2	1/4" = 1'-0"

**LEGEND**

- CIP Concrete Paving(Natural Colour)  
Light Broom Finish with sawcut control joints
- 18"x18" Hydrapressed Paving  
Slabs at Private Patio  
Colour: Grey
- 24"x24" Hydrapressed Paving  
Slabs at Commercial Patio  
Colour: Desert Sand
- Concrete Unit Pavers  
Type B
- 12"x24" Basalt Tile at Lobby Entrance  
(Non Slip)
- 24" Square Hydrapressed Slabs  
Colour: Charcoal
- P.I.P. Resilient Rubber Play Surface
- Decorative River Rock
- Sodded Lawn/Artificial Turf
- Metal Bike Rack  
Colour to match Arch. Metal Work
- Wood Bench

**LIGHTING LEGEND**

- Wall Lighting
- Step Lighting
- Lights from above
- Signage Wall Lighting



3	2017-02-23	DP Resubmission
2	2016-08-31	DP Resubmission
1	2016-07-08	DP Submission
no.:	date:	Item:

Revisions:

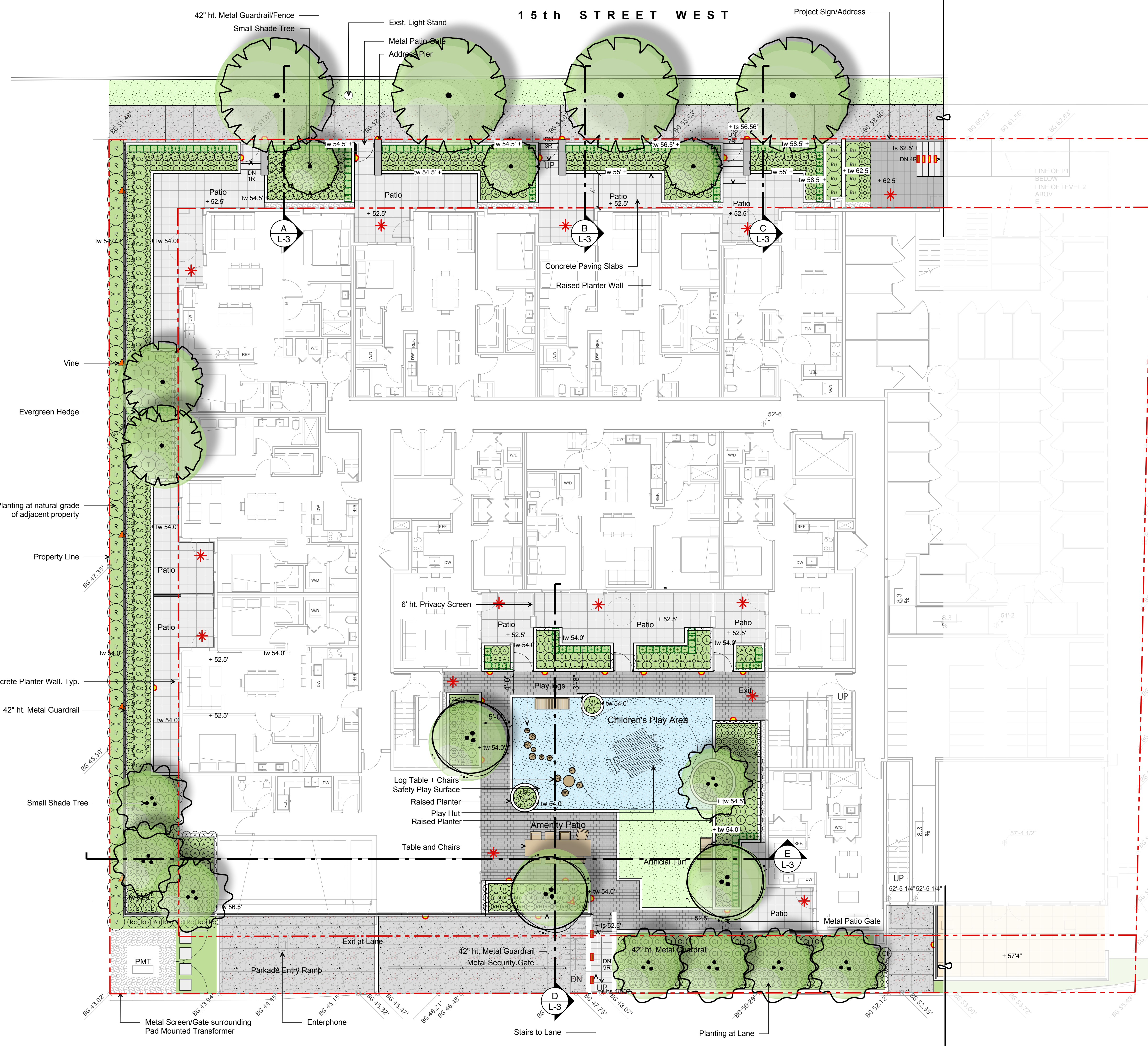
Durante Kreuk Ltd.  
102 - 1637 West 5th Avenue  
Vancouver BC V6J 1N5  
t: 604 684 4611  
f: 604 684 0577  
www.dkl.bc.ca

Project:  
**705-717 West 15th Street**

Drawn by: JS, YL, NG.  
Checked by: JS  
Date: 2017.02.23  
Scale: 1/8"=1'

Drawing Title:  
**Landscape Plan\_ Level 1**

Project No.:  
**16052**  
Sheet No.:



**LANDSCAPE NOTES**

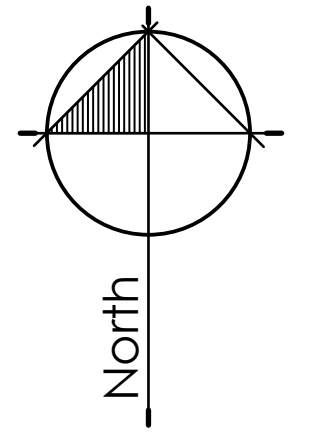
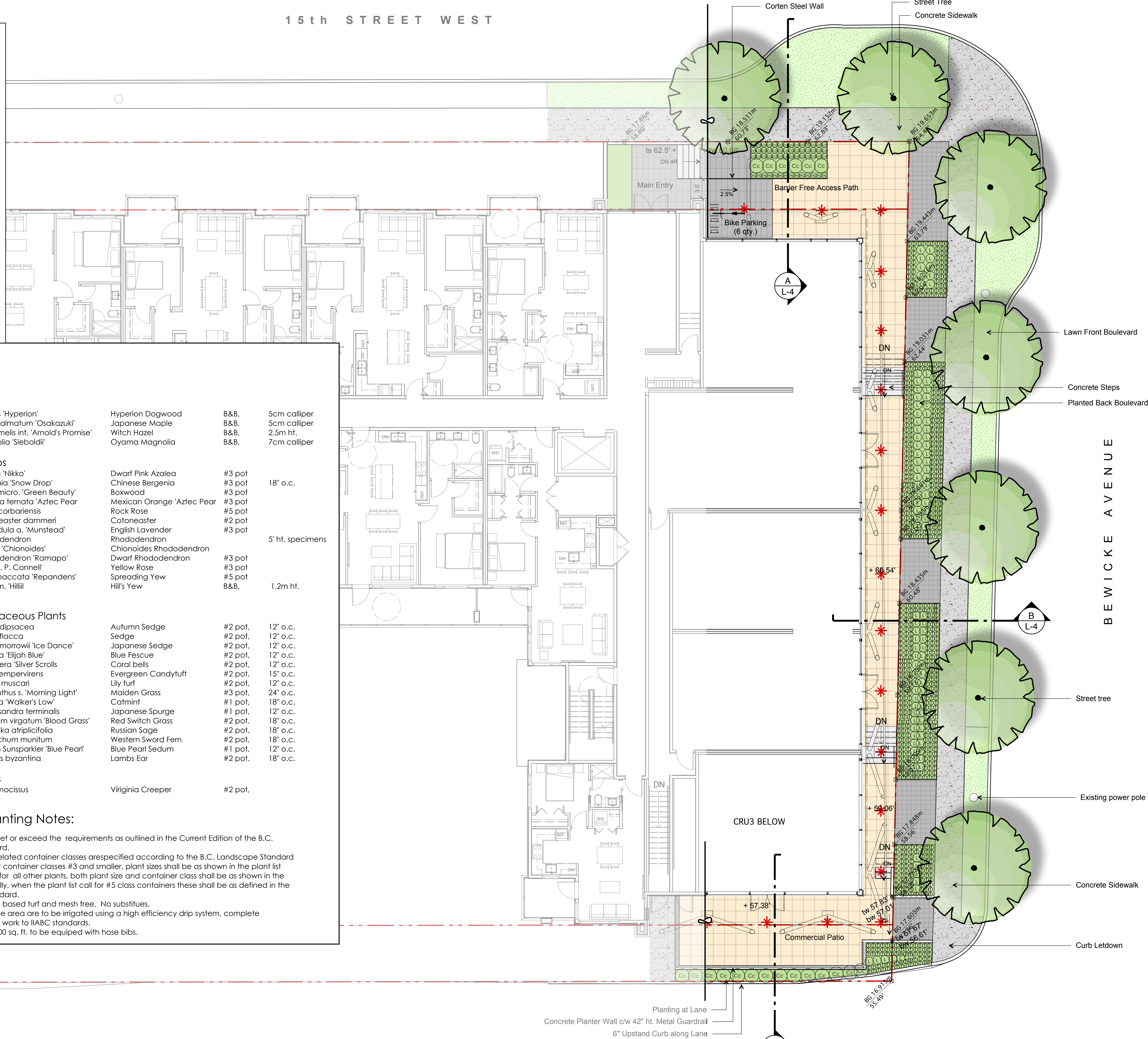
1. All work shall meet or exceed the requirements as outlined in the current Edition of the B.C. Landscape Standard.
2. Plant sizes and related container classes are specified according to the B.C. Landscape Standard current Edition. For container classes #3 and smaller, plant sizes shall be as shown in the plant list and the Standard; for all other plants, both plant size and container class shall be as shown in the plant list. Specifically, when the plant list call for #5 class containers, these shall be as defined in the BCNTA (ANSI) Standard.
3. All trees to be staked in accordance with BCNTA Standards.
4. For all existing on site services and survey symbols refer to survey drawings.
5. All landscaping and treatment of the open portions of the site shall be completed in accordance with the approved drawings within six (6) months of the date of issuance of any required occupancy permit, or any use or occupancy of the proposed development not requiring an occupancy permit, and thereafter permanently maintained in good conditions.
6. A high efficiency irrigation system is to be installed in common areas. Irrigation system and design to be in accordance with the Irrigation Association of BC Standard Guidelines

**Plant List**

Trees			
3	Cornus 'Hyperion'	Hyperion Dogwood	B&B, 5cm calliper
3	Acer palmatum 'Osakazuki'	Japanese Maple	B&B, 5cm calliper
8	Hamamelis int. 'Arnold's Promise'	Witch Hazel	B&B, 2.5m ht.
2	Magnolia 'Sieboldii'	Oyama Magnolia	B&B, 7cm calliper
Shrubs			
A	102 Azalea 'Nikko'	Dwarf Pink Azalea	#3 pot
bs	50 Bergenia 'Snow Drop'	Chinese Bergenia	#3 pot 18" o.c.
□	50 Buxus micro. 'Green Beauty'	Boxwood	#3 pot
Ct	46 Choisya ternata 'Aztec Pear'	Mexican Orange 'Aztec Pear'	#3 pot
Cc	59 Cistus corbariensis	Rock Rose	#5 pot
Cd	61 Cotoneaster dammeri	Cotoneaster	#2 pot
L	255 Lavandula a. 'Munstead'	English Lavender	#3 pot
R	46 Rhododendron	Rhododendron	5' ht. specimens
RH	20 Rhodo 'Chionoides'	Chionoides Rhododendron	
Rr	88 Rhododendron 'Ramapo'	Dwarf Rhododendron	#3 pot
Ro	8 Rosa 'J. P. Connell'	Yellow Rose	#3 pot
T	18 Taxus baccata 'Repandens'	Spreading Yew	#5 pot
□	193 Taxus m. 'Hillii'	Hill's Yew	B&B, 1.2m ht.
Herbaceous Plants			
cd	42 Carex dipsacea	Autumn Sedge	#2 pot, 12" o.c.
c	70 Carex flacca	Sedge	#2 pot, 12" o.c.
cm	94 Carex marrowii 'Ice Dance'	Japanese Sedge	#2 pot, 12" o.c.
f	692 Festuca 'Elijah Blue'	Blue Fescue	#2 pot, 12" o.c.
Hs	14 Heuchera 'Silver Scrolls'	Coral bells	#2 pot, 12" o.c.
i	66 Iberis sempervirens	Evergreen Candytuft	#2 pot, 15" o.c.
li	244 Liriope muscari	Lily turf	#2 pot, 12" o.c.
ms	22 Miscanthus s. 'Morning Light'	Maiden Grass	#3 pot, 24" o.c.
n	24 Nepeta 'Walker's Low'	Catmint	#1 pot, 18" o.c.
p	68 Pachysandra terminalis	Japanese Spurge	#1 pot, 12" o.c.
pb	20 Panicum virgatum 'Blood Grass'	Red Switch Grass	#2 pot, 18" o.c.
pl	141 Peroviska atriplicifolia	Russian Sage	#2 pot, 18" o.c.
⊕	130 Polystichum munitum	Western Sword Fern	#2 pot, 18" o.c.
s	19 Sedum Sunsparkler 'Blue Pearl'	Blue Pearl Sedum	#1 pot, 12" o.c.
sb	7 Stachys byzantina	Lambs Ear	#2 pot, 18" o.c.
Vines			
▲	5 Parthenocissus	Virginia Creeper	#2 pot.

**General Planting Notes:**

1. All work shall meet or exceed the requirements as outlined in the Current Edition of the B.C. Landscape Standard.
2. Plant sizes and related container classes are specified according to the B.C. Landscape Standard Current Edition. For container classes #3 and smaller, plant sizes shall be as shown in the plant list and the Standard; for all other plants, both plant size and container class shall be as shown in the plant list. Specifically, when the plant list call for #5 class containers these shall be as defined in the BCNTA (ANSI) Standard.
3. Sod is to be sand based turf and mesh free. No substitutes.
4. All soft landscape area are to be irrigated using a high efficiency drip system, complete with rain sensor. All work to IABC standards.
5. All patios over 100 sq. ft. to be equipped with hose bibs.



Revisions:	no.:	date:	Item:
3	2017-02-23		DP Resubmission
2	2016-08-31		DP Resubmission
1	2016-07-08		DP Submission

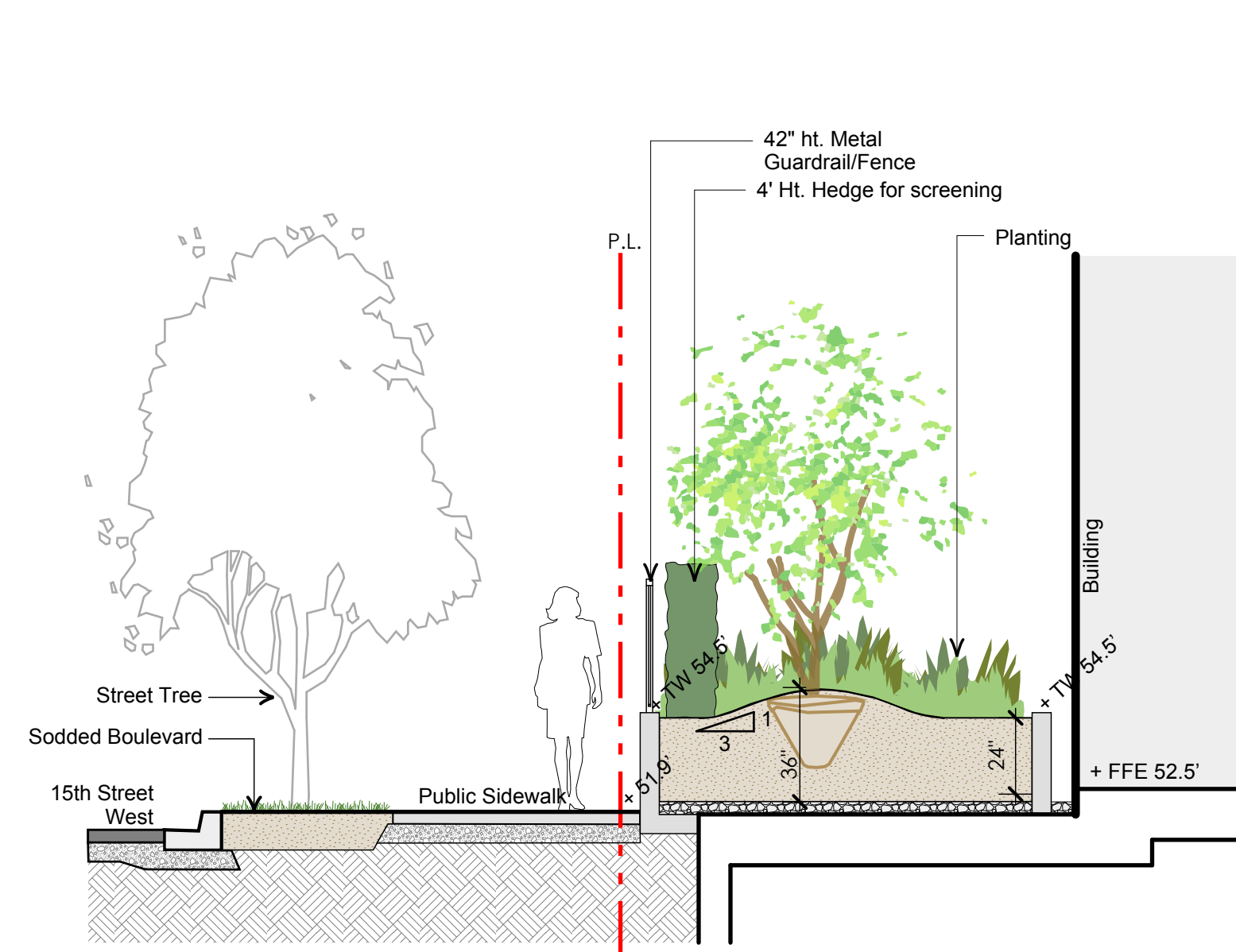
**dk** Durante Kreuk Ltd.  
 102 - 1637 West 5th Avenue  
 Vancouver BC V6J 1N5  
 t: 604 684 4611  
 f: 604 684 0577  
 www.dk.bc.ca

Project:  
**705-717 West 15th Street**

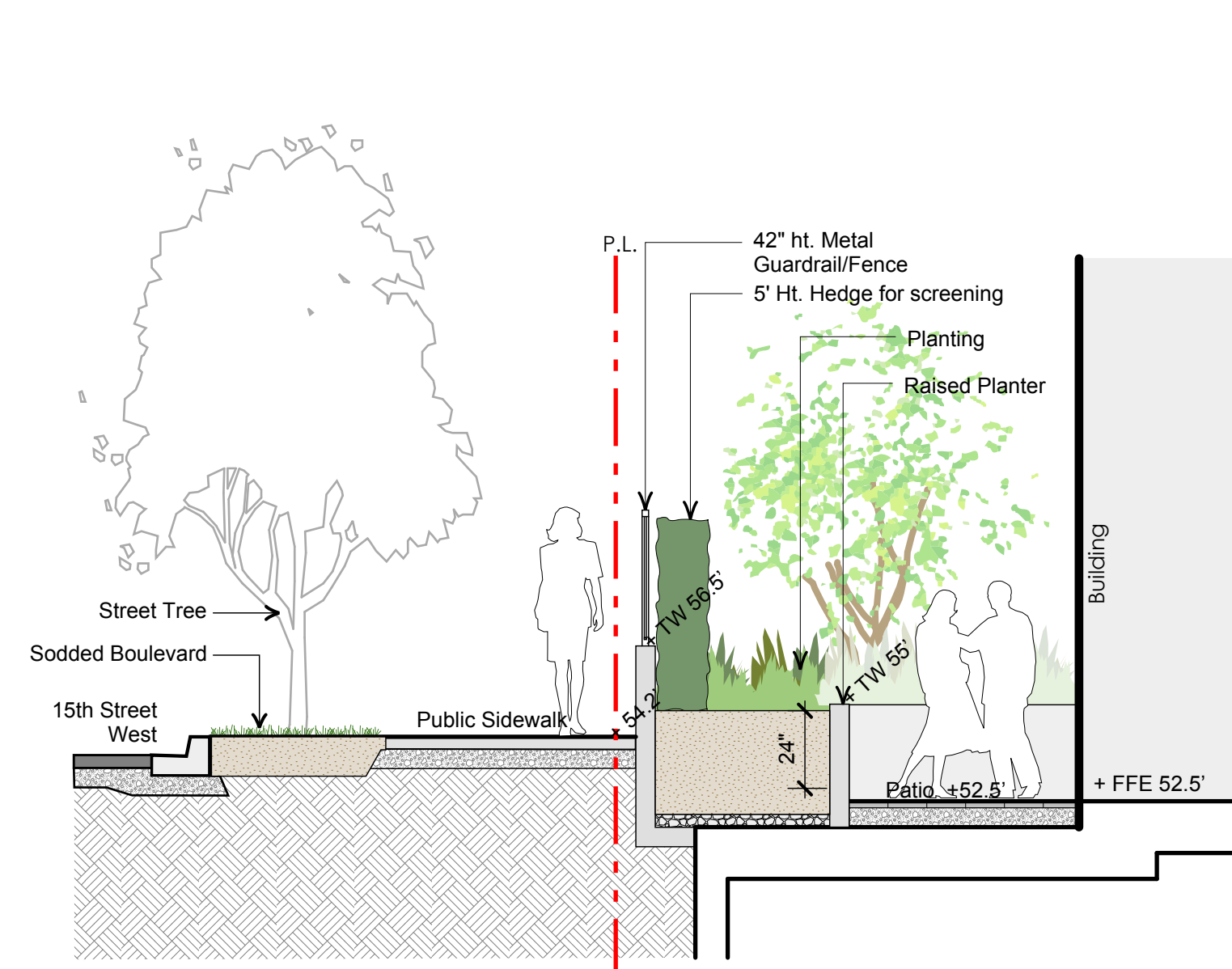
Drawn by: JS, YL  
 Checked by: JS  
 Date: 2017.02.23  
 Scale: 1/8"=1'

Drawing Title:  
**Landscape Plan\_ Level 2**

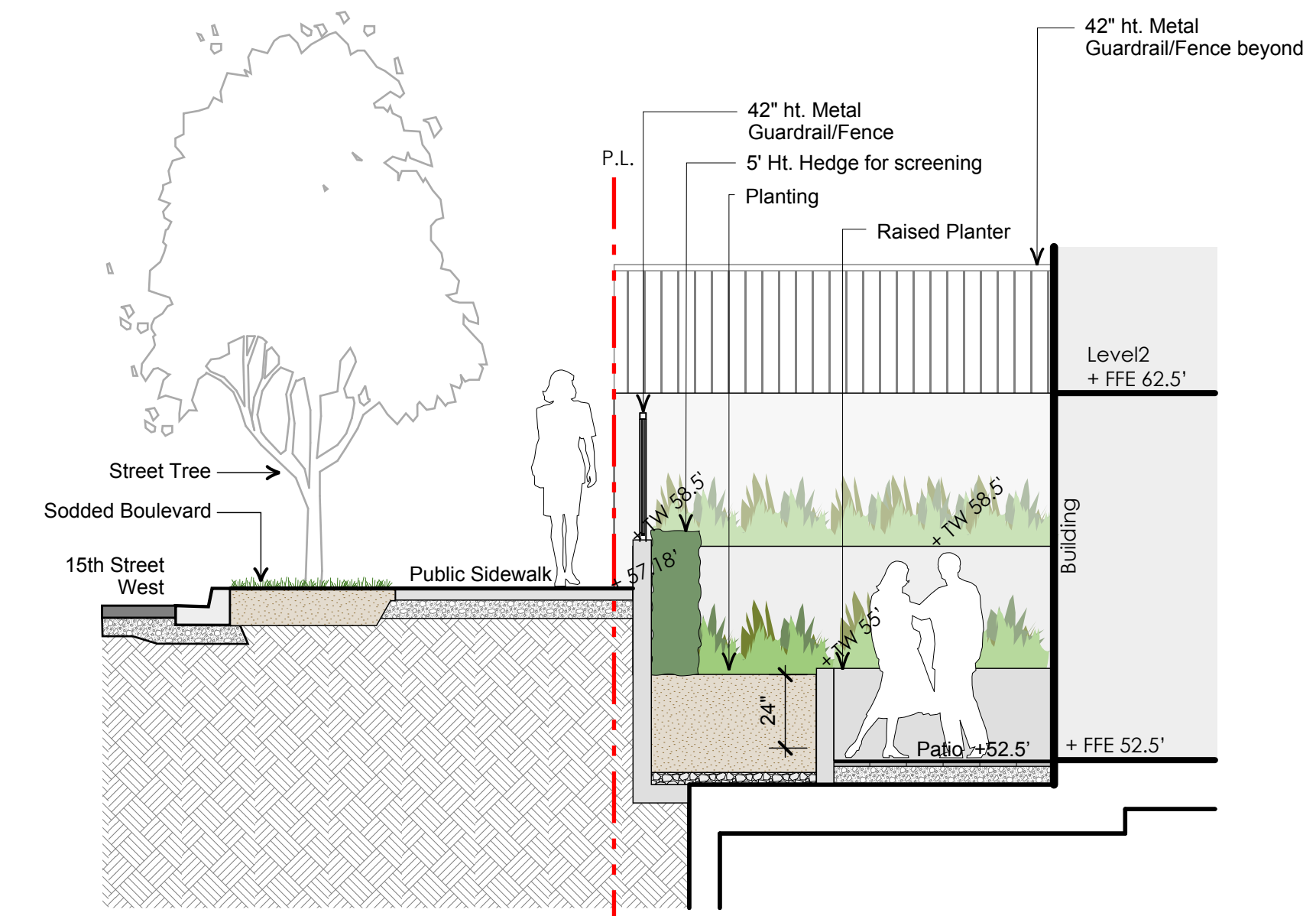
Project No.:  
**16052**  
 Sheet No.:



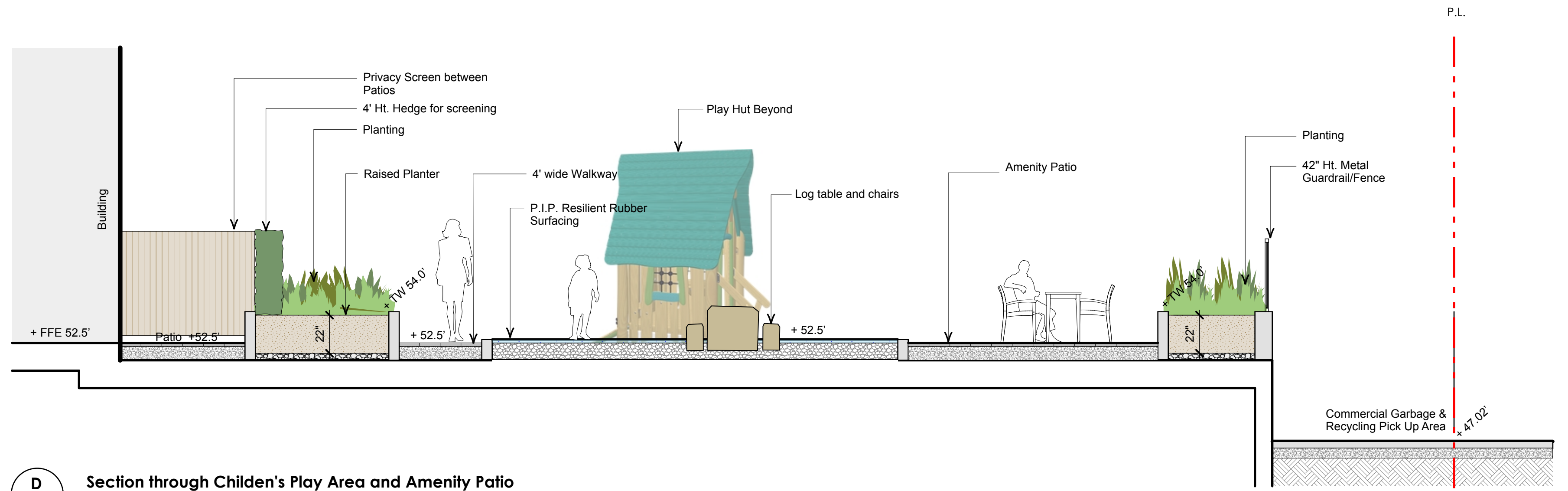
**A** 15th Street West- A  
L-1 Scale: 1/4"=1'-0"



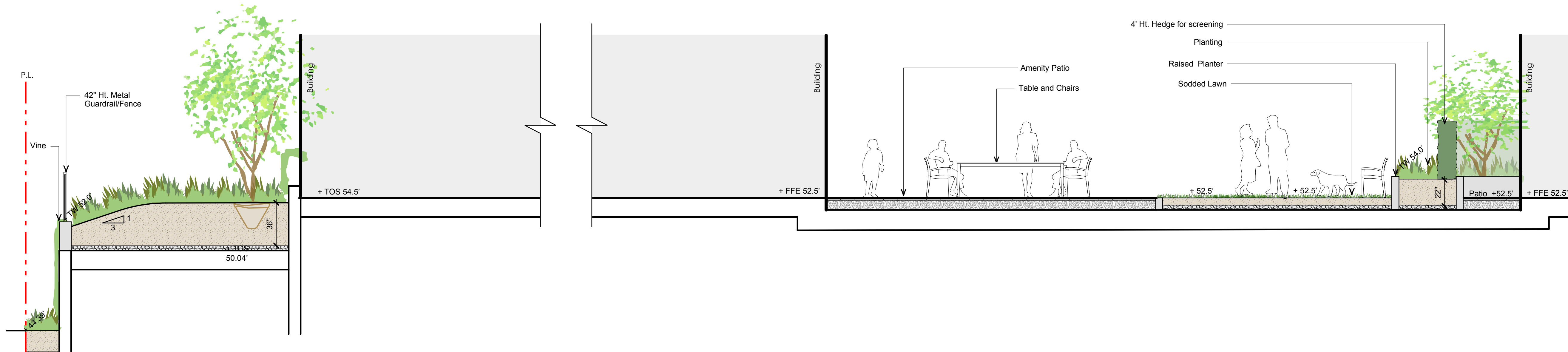
**B** 15th Street West- B  
L-1 Scale: 1/4"=1'-0"



**C** 15th Street West- C  
L-1 Scale: 1/4"=1'-0"



**D** Section through Children's Play Area and Amenity Patio  
L-1 Scale: 1/4"=1'-0"



**E** Section through Amenity Patio and Lawn Area  
L-1 Scale: 1/4"=1'-0"

3	2017-02-23	DP Resubmission
2	2016-08-31	DP Resubmission
1	2016-07-08	DP Submission
no.:	date:	item:

Revisions:



Project:

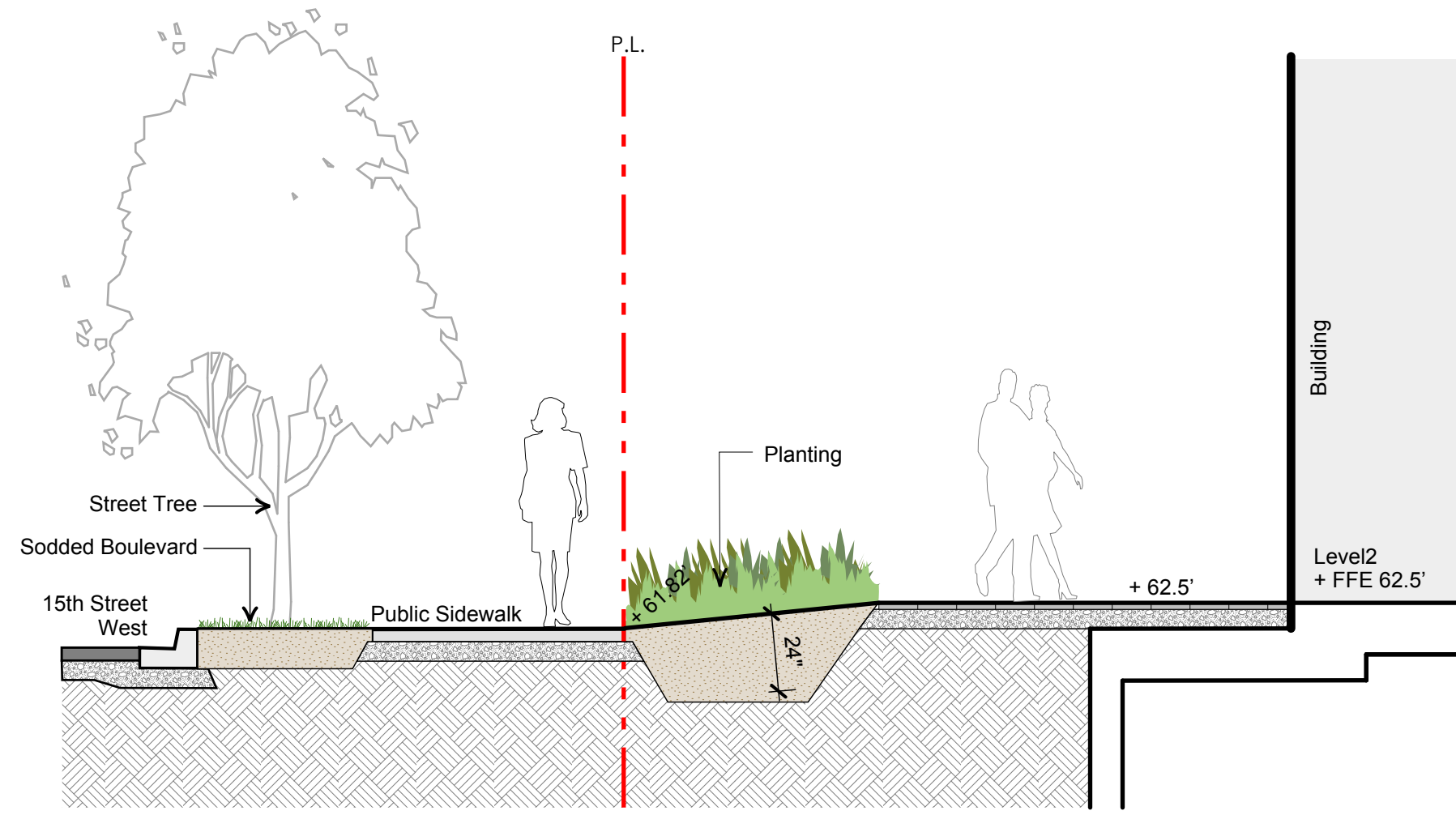
**705-717 West 15th Street**

Drawn by: YL, NG  
Checked by: JS  
Date: 2017.02.23  
Scale: 1/4"=1'

Drawing Title:  
**Landscape Sections**

Project No.:  
**16052**

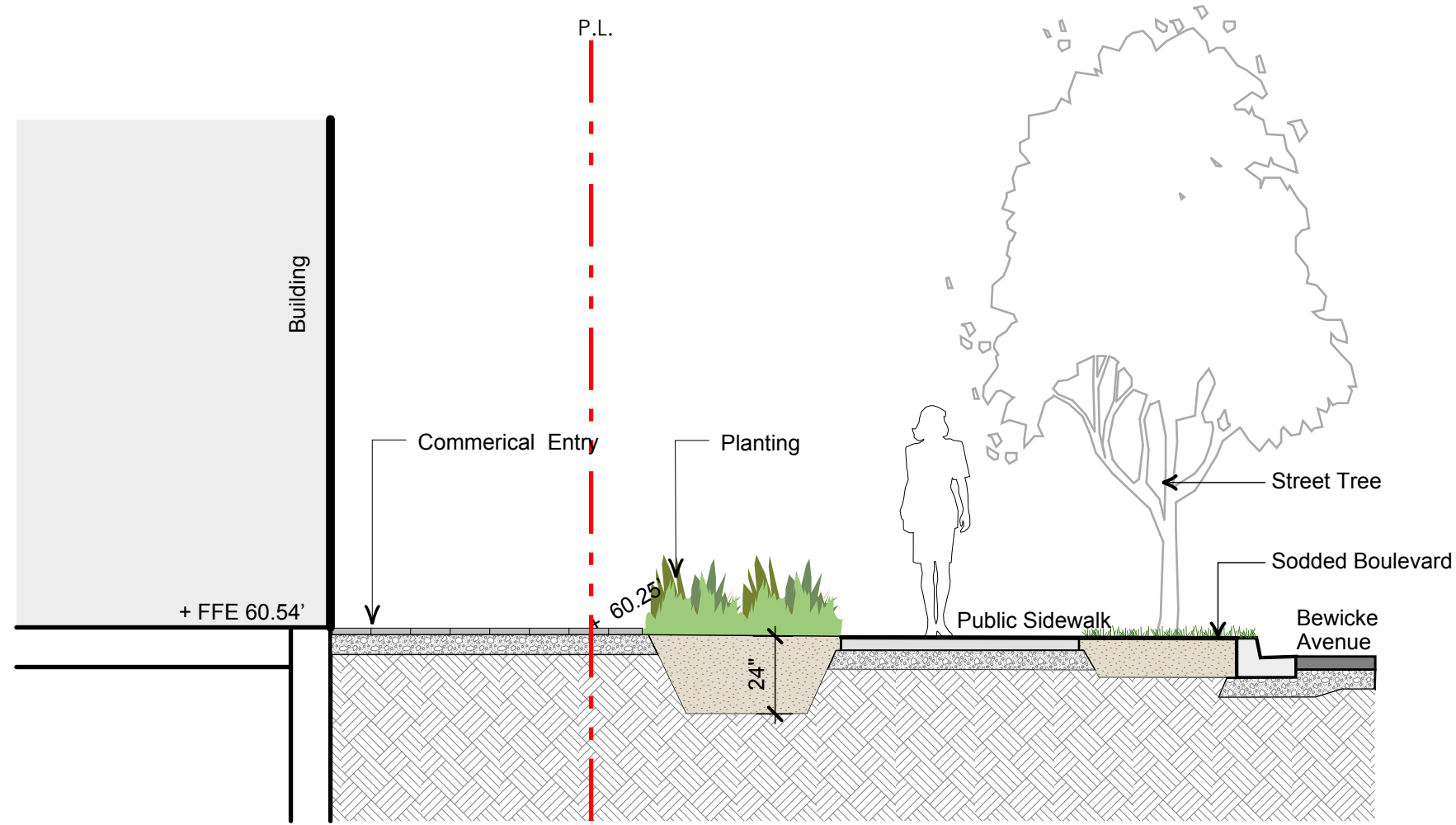
Sheet No.:



**A** 15th Street West at Level 2- D

Scale: 1/4"=1'-0"

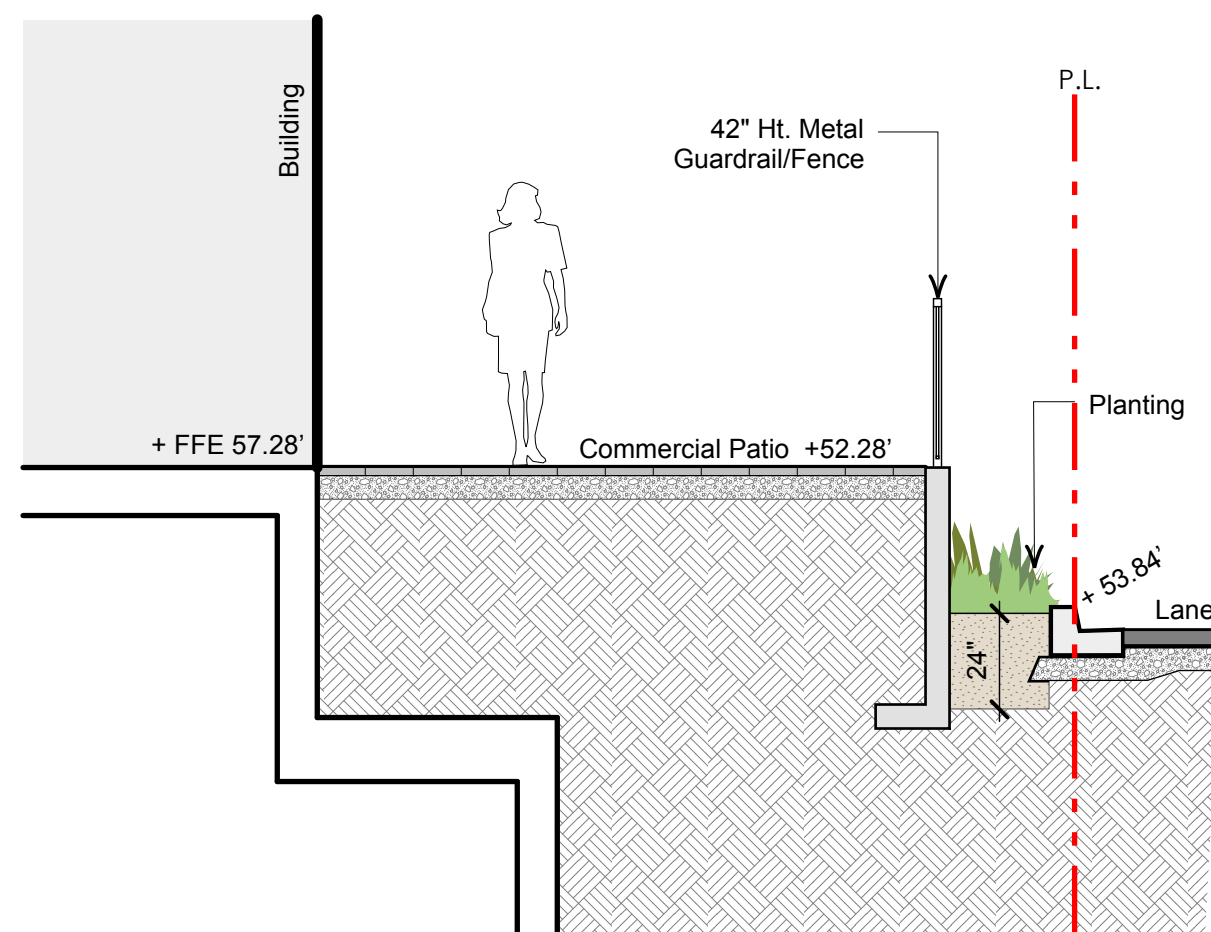
L-2



**B** Bewicke Avenue

Scale: 1/4"=1'-0"

L-2



**C** Section through Commercial Patio

Scale: 1/4"=1'-0"

L-2

3	2017-02-23	DP Resubmission
2	2016-08-31	DP Resubmission
1	2016-07-08	DP Submission

no.: | date: | item:

Revisions:



Project:

**705-717 West 15th Street**

Drawn by: YL

Checked by: JS

Date: 2017.02.23

Scale: 1/4"=1'

Drawing Title:

**Landscape Sections**

Project No.:

**16052**

Sheet No.: