

**MINUTES OF THE REGULAR MEETING OF COUNCIL HELD IN THE COUNCIL CHAMBER, CITY HALL, 141 WEST 14<sup>th</sup> STREET, NORTH VANCOUVER, BC, ON MONDAY, SEPTEMBER 9, 2019**

---

**REPORT OF THE COMMITTEE OF THE WHOLE (CLOSED SESSION)**

**REPORT**

11. North Shore Neighbourhood House Space Needs Analysis – Release of Closed Information – File: 13-6410-01-0001/2019

Report: Planner 2, August 23, 2019

Moved by Councillor Bell, seconded by Councillor Hu

PURSUANT to the report of the Planner 2, dated August 23, 2019, entitled “North Shore Neighbourhood House Space Needs Analysis – Release of Closed Information”:

THAT Attachment 1 (North Shore Neighbourhood House Functional Program, Cornerstone Planning Group, April 25, 2016) of the report of the Community Planner and Manager, Facilities and Real Estate, dated July 20, 2016, entitled “North Shore Neighbourhood House Space Needs Analysis”, be released;

THAT the PowerPoint presentation to Council by Cornerstone Planning Group on July 25, 2016, be released;

AND THAT the report of the Planner 2, dated August 23, 2019, entitled “North Shore Neighbourhood House Space Needs Analysis – Release of Closed Information”, remain in the Closed session.

**CARRIED UNANIMOUSLY**



## **North Shore Neighbourhood House Functional Program**

## **Cornerstone Planning Group**

David Whetter  
#204 - 1551 Johnston Street  
Vancouver, BC V6H 3R9  
t. 604.687.5896  
f. 604.684.6201  
david@cornerplan.com

May 17, 2016

# Table of Contents

<b>Introduction</b> .....	1
<b>Facility Overview</b> .....	2
<b>Component 1.0 - Community</b> .....	7
<b>Component 2.0 - Childcare</b> .....	11
<b>Component 3.0 - Administration</b> .....	14
<b>Appendix A: Detailed Childcare Area Tables</b> .....	7
<b>Appendix B: Room Data Sheets</b> .....	20

# Introduction

## Study Context

The North Shore Neighbourhood House is exploring options to develop a new “house” on another site. The new facility will include all of the existing functions currently operating in the Neighbourhood House with some expansion to allow for future growth and the changing needs of the community. The purpose of this study is to develop a Functional and Architectural Program to guide further development of the new facility.

## Study Process

The study process was organized as follows:

- The project was initiated in September, 2015 by the City of North Vancouver
- The project team toured similar existing community centres, including Kitsilano Neighbourhood House and Kiwassa Neighbourhood House. Executive Directors were interviewed during these visits to understand the function, needs, and shortcomings of each facility.
- The project team also toured the existing North Shore Neighbourhood House, which will be replaced by the new Neighbourhood House and interviewed staff to understand usage profiles, programs, scheduling, and direction.
- Background information including program guides, building floorplans, and previous studies were collected and analyzed.
- The information gleaned from the above steps was compiled and analyzed

## Introduction to the Document

This document provides a description of the space required to accommodate the North Shore Neighbourhood House. In addition to a general description of the functions that the house is expected to support, this document uses several tools to describe the space:

The **functional program** is an inventory of all spaces included in the facility, their sizes, and general characteristics. The spaces used to directly support functions are called assigned areas. Additional support areas, such as washrooms, custodial support, circulation, and the area occupied by walls are added to the total assigned areas to find the Building Gross Area, which is the total floor area required to accommodate the space. The functional program also includes descriptions of specific spaces and their intended function.

The **spatial relationship diagram**, while not a floor plan, shows the relative size and proximity of spaces in the building, as well as their proximity to entrances. The spatial relationship diagram states requirements for proximity and layout that can potentially be achieved through a variety of floor plans. It is important to express these requirements independent of the site parameters or any one building layout, as a clear expression of requirements allows for intelligent revisions to building layout in the case of changing priorities or parameters.

# Facility Overview

## Functional Program

The program has been organized into three components: Community Programs, Childcare, and Administration. Each component is described in detail in the following sections of the document. The table below provides an overview of each component’s net assignable area as well as the building gross area. A building grossing factor of 1.3 has been applied to account for building systems and main circulation.

Two versions of the program has been provided: an enhanced version that includes all required and desired spaces, and a Base program that reflects the existing facility with improvements to meet current space standards. These two scenarios are presented to demonstrate the variations in space that may be required in the new NSNH. The Enhanced program includes all of the spaces that would be required to meet both current use of the NSNH as well as improvements to programs (such as the addition of a Community Kitchen for cooking classes and additional Community Room space). The Base program more closely resembles the existing facility, with improvements made to mitigate problems presented in the current space (such as improved circulation and childcare that meets modern standards).

## Enhanced Program

Component	Net Assignable Area (ft <sup>2</sup> )
<b>1 Community Programs</b>	<b>11,674</b>
<b>2 Childcare</b>	<b>7,007</b>
<b>3 Administration</b>	<b>4,370</b>
<b>Total Net Assignable</b>	<b>23,051</b>
Building Systems & Main Circulation ( <i>grossing factor of 1.3</i> )	6,915.29
<b>TOTAL BUILDING GROSS AREA</b>	<b>29,966.24</b>
<i>Childcare Outdoor Area</i>	<i>6,651</i>

## Base Program

Component	Net Assignable Area (ft <sup>2</sup> )
<b>1 Community Programs</b>	<b>8,405</b>
<b>2 Childcare</b>	<b>6,432</b>
<b>3 Administration</b>	<b>4,025</b>
<b>Total Net Assignable</b>	<b>18,861</b>
Building Systems & Main Circulation ( <i>grossing factor of 1.3</i> )	5,658.44
<b>TOTAL BUILDING GROSS AREA</b>	<b>24,519.89</b>
<i>Childcare Outdoor Area</i>	<i>4,295</i>

## **Building Guidelines**

The guidelines below outline the general qualities of the overall Neighbourhood House. More specific guidelines for each component are noted in the component's section in this report.

### ***Access Control and Security***

Access to the centre will be locked and alarmed during off-hours, with CCTV monitoring of all entrances not visible from a reception desk. Due to the variation in operating hours between components, it must be possible to lock and alarm specific components against entry from other components as well. The elevator will deny access to closed floors unless the appropriate key card is used.

Exterior lighting should be provided at all building entrances in order to identify a secure public gathering place, promote access, and to deter vandalism and loitering.

### ***Quality and Image of Environment***

The Neighbourhood House should be open and welcoming, and not intimidating or institutional. Transparency and vignettes into activity spaces will be the best form of promotion for the house. Since there will be two separate entrances: main entrance and gathering hall, legibility and signage will be important, as well as the interconnection of the components. Exterior and interior signage should clearly identify each component of the centre. In addition, sightlines and interior signage should be configured to enable intuitive navigation between components.

Wayfinding signage should maximize the building's user friendliness. The signage must address not only the range of information to be conveyed to the public, but also the challenge of serving people of different ages, socioeconomic backgrounds, different levels of technological literacy, various ethnic origins, and physical abilities.

The quality of environment including day-lighting, views between spaces and borrowed light are important to create a welcoming and home-like atmosphere. Transparency and privacy will have to be balanced, but windowless rooms are discouraged. Operable windows on exterior walls encourage natural ventilation and air convection, and much of the year can reduce mechanical air handling costs.

### **Existing Facility**

The existing facility has reached the end of its useful life and is due for replacement. While current NSNH programming is accommodated within the facility, there are significant deficiencies that must be ameliorated with a new facility. Circulation in the existing facility is insufficient and unable to accommodate high traffic volumes. Many visitors use mobility devices and the narrow hallways make navigation difficult. The new facility will meet current standards and provide sufficient circulation to accommodate all visitors.

The current childcare spaces are outdated and undersized compared to modern childcare facilities. Childcare spaces in both the Base and Enhanced programs are based on current standards, which provide for more activity area as well as separate nap rooms. This will allow for better delivery of childcare services by the NSNH.

In addition, the existing facility lacks sufficient meeting space for staff, forcing them to compete with community programs when scheduling meetings. The new programs allow for dedicated staff meeting rooms as well as break-out rooms for private conversations with clients.

Community room spaces in the Base program are not significantly different from the existing facility, but the Enhanced program is much larger. This allows for future growth in programs and reduces some of the scheduling problems that currently exist in the House. For example, the Teen Club program could be offered in a community room instead of using the Preschool space, allowing extended operating hours for the Preschool program.

**Component Area Comparison Table**

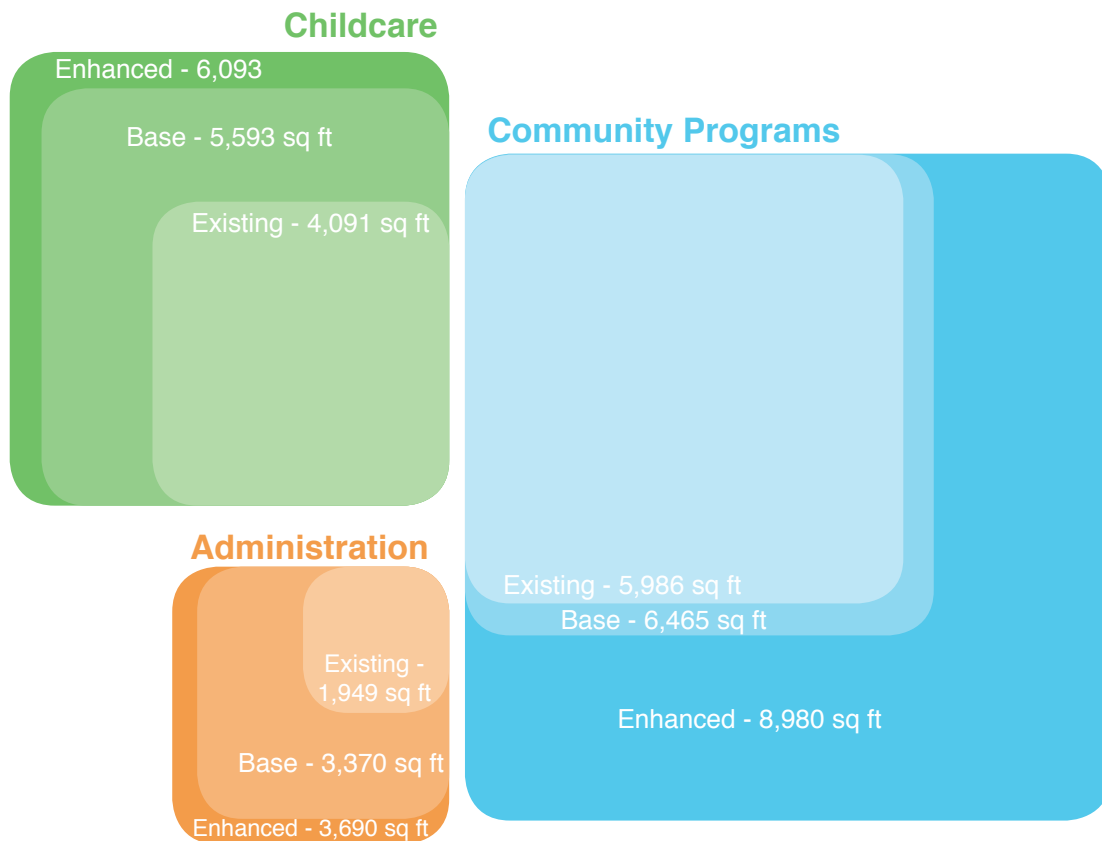
The table below compares the relevant areas of the existing facility to the Base and Enhanced program areas.

	Existing Facility Areas (sf)	Base Program Areas (sf)	Enhanced Program Areas (sf)
Community Spaces	5,986	6,465	8,980
Childcare Spaces	4,091	5,593	6,093
Admin Spaces	1,949	3,370	3,690
<b>Net Assignable Areas*</b>	<b>12,025</b>	<b>15,428</b>	<b>18,763</b>
<b>Building Gross Area</b>	<b>18,055</b>	<b>24,520</b>	<b>29,966</b>

\*Refers only to useable area such as community rooms and offices. Does not include gross-up areas such as main circulation, boiler room, etc.

**Component Area Comparison Diagram**

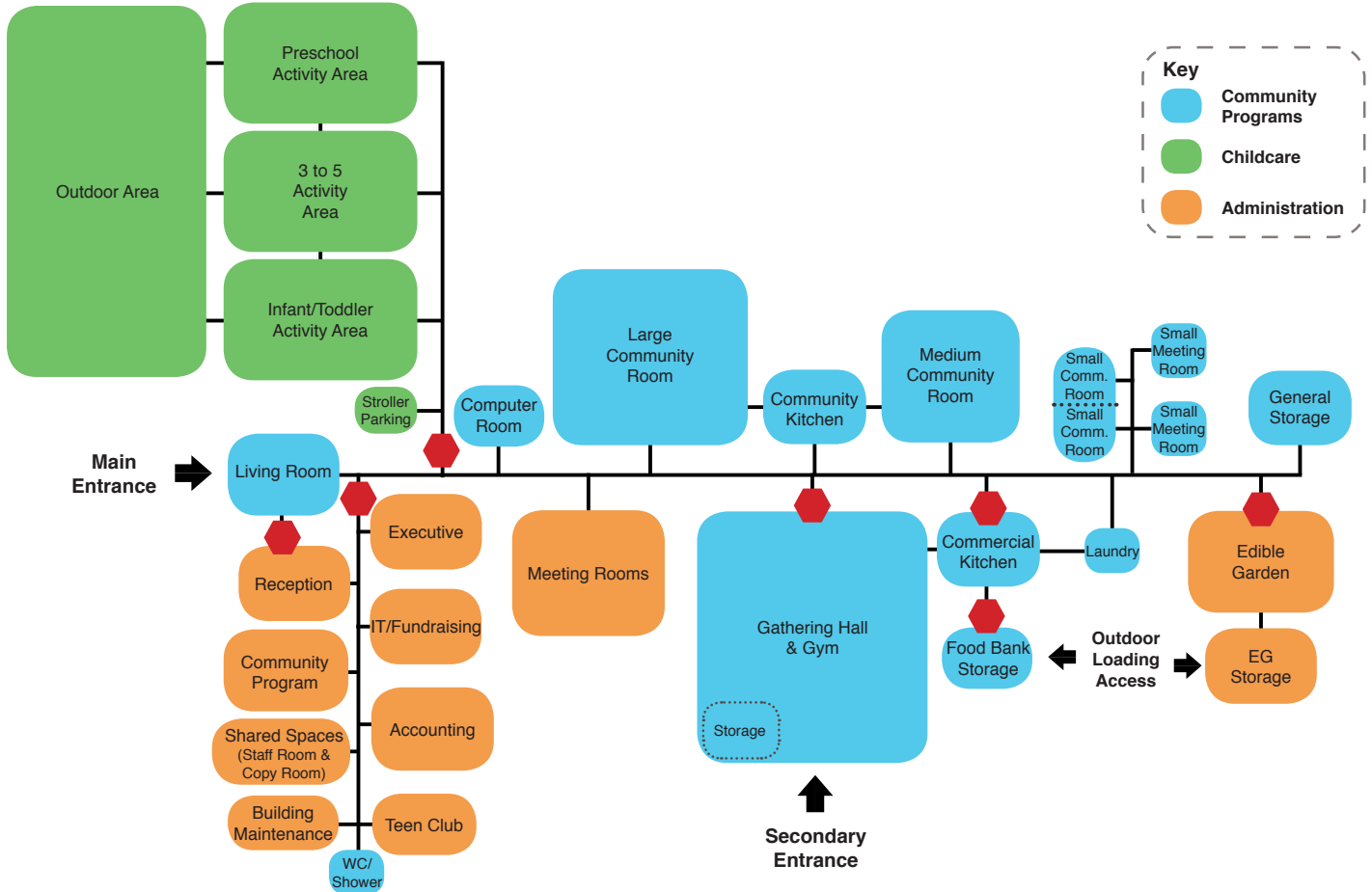
The diagram below compares the relative size of each component in the existing facility to the same areas in both the base and enhanced programs.



## Spatial Relationship Diagram

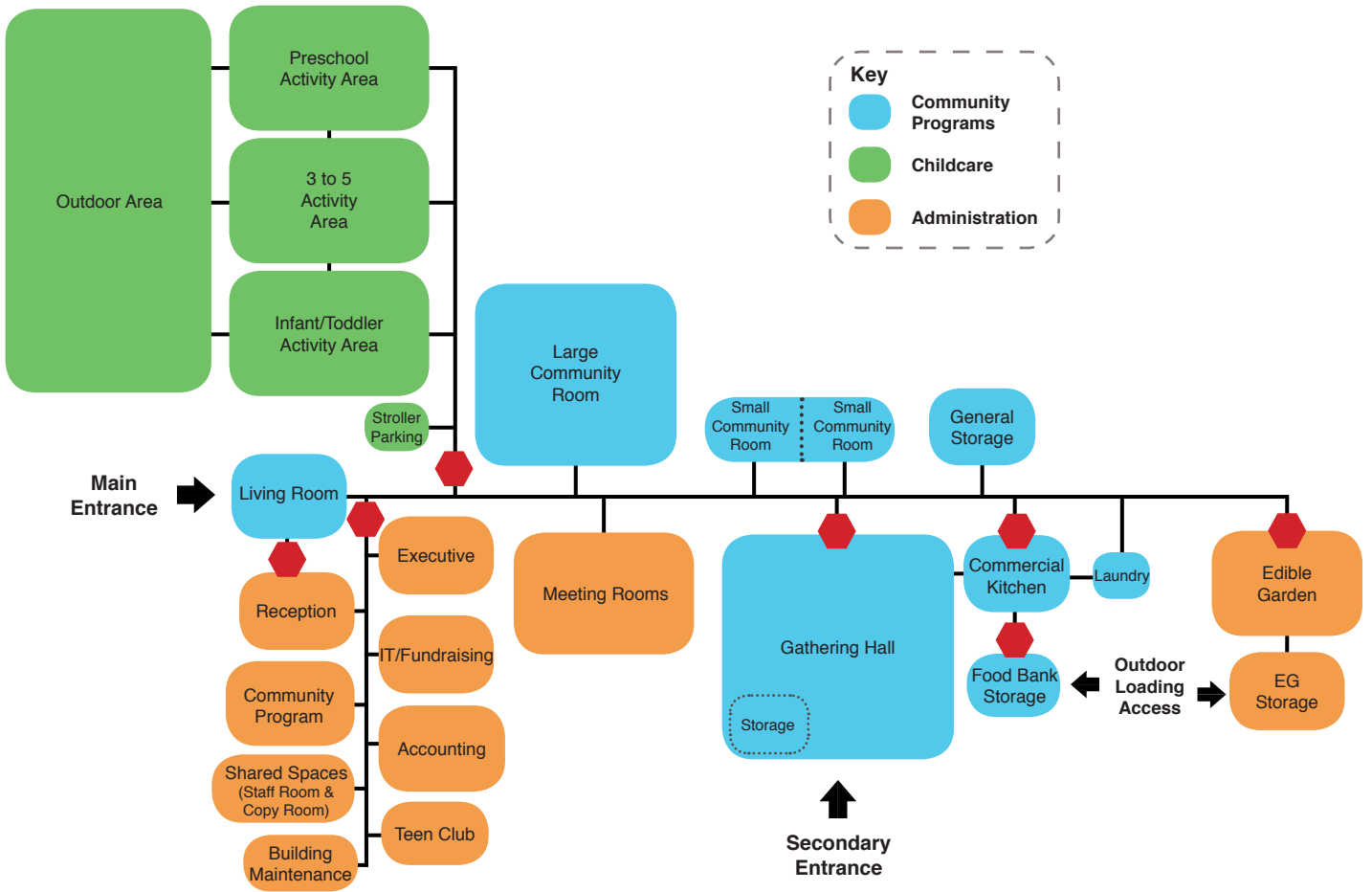
The diagrams below show the relative size and proximity of spaces in the building as well as important access and security points. The red stop signs denote connections that must be restricted with locked doors and electronic keys to provide security.

### Enhanced Program





# Base Program



# Component 1.0 - Community

## Component Description

The Community Programs component encompasses a wide range of community-focused programs, ranging from the Food Bank to classes for new moms. The space needs of this component are a selection of community rooms in a range of sizes that are flexible such that they may suite various purposes. Programs are delivered by both the Neighbourhood House and partner groups, so sufficient space is required to accommodate on-site storage needs of partner organizations.

Food is an important aspect of many of the programs in this component, so access to both the Community and Commercial kitchens is required.

Participants in these programs range from seniors to new mothers with infants. Community Program spaces must be barrier free and easily accessible by mobility devices.

## Program Space List

The space lists below indicates the total footprint of the Community Programs component for both the Enhanced and Base scenarios, including kitchens and storage.

### Enhanced Program

Community Programs	Number Spaces	Space Net Area (ft2)	Space Net Area (m2)	Net Area (ft2)	Notes
1.1 Living Room (waiting area)	1	300	28	300	
1.2 Gathering Hall & Gym	1	3,000	204	3,000	Capacity of 200
1.3 Gathering Hall Storage	1	375	35	375	
1.4 Bathroom with Shower	1	75	7	75	1 Shower Stall (for Staff use)
1.5 Large Community Room	1	1700	158	1,700	Capacity 50
1.6 Medium Community Room	1	850	79	850	Capacity 25
1.7 Small Community Rooms	2	120	11.15	240	Adjacent with retractable wall
1.8 Small Meeting Room	2	120	11.15	240	Capacity 3 to 5
1.9 Community Room Storage	4	50	4.7	200	
1.11 Community Kitchen	1	250	23.2	250	
1.12 Commercial Kitchen	1	550	51	550	
1.13 Pantry (Community Kitchen)	1	50	5	50	Serves Community Kitchen
1.14 Food Bank Storage	1	300	28	300	Serves Commercial Kitchen
1.15 Computer Room	1	250	23	250	12 computer workstations Includes both earthquake and
1.16 General Storage	1	500	46.5	500	program supplies
1.17 Laundry	1	100	9.3	100	Adjacent to Commercial Kitchen
<b>Subtotal Net Area (ft2)</b>				<b>8,980</b>	
Subtotal Circulation (1.3)				2,694.00	
<b>Total Net Assignable Area (ft2)</b>				<b>11,674.00</b>	

## Base Program

Community Programs	Number Spaces	Space Net Area (ft2)	Space Net Area (m2)	Net Area (ft2)	Notes
1.1 Living Room (waiting area)	1	300	28	300	
1.2 Gathering Hall	1	2200	204	2200	Capacity of 150
1.3 Gathering Hall Storage	1	375	35	375	
1.4 Large Community Room	1	1700	158	1700	Capacity 50
1.5 Small Community Rooms	2	120	11.15	240	Adjacent with retractable wall
1.6 Community Room Storage	4	50	4.7	200	
1.7 Commercial Kitchen	1	550	51	550	
1.8 Food Bank Storage	1	300	28	300	Serves Commercial Kitchen Includes both earthquake and
1.9 General Storage	1	500	46.5	500	program supplies
1.11 Laundry	1	100	9.3	100	Adjacent to Commercial Kitchen
<b>Subtotal Net Area (ft2)</b>				<b>6,465</b>	
Subtotal Circulation (1.3)				1,939.50	
<b>Total Net Assignable Area (ft2)</b>				<b>8,404.50</b>	

### Living Room

The main entrance and living room serve as the welcome point for the organization. As such, it should have a home-like feel and operate as a living room, rather than a waiting room. A computer for client use will be available along with coffee and comfortable seating where clients may socialize. Direct line of sight from the reception desk to the Living Room is required to allow for passive security by staff of the area.

### Storage

Storage is required throughout the facility for all Community Programs. Storage within community rooms is provided to store tables, chairs, and athletic equipment. This storage should be easily accessible within each room to allow for easy set-up and tear-down of events. General storage is provided for program-specific materials and items used by partner organizations that need on-site storage for programs they offer at the Neighbourhood House. Storage rooms and cabinets should be locked to prevent theft. Storage for Youth Programs is required for sports equipment, AV equipment, and supplies used for youth outings. This storage may be shared with other programs in order to maximize efficiency and sharing of equipment.

### Kitchens

A Commercial Kitchen is provided to serve as a prep kitchen for the Food Bank and other Neighbourhood House Programs. Development of food skills is also an important feature of a number of Neighbourhood House programs. A Community Kitchen is provided to allow for hands-on teaching and cooking programs with clients in all programs including youth and seniors. The Youth Program must also have access to the Community Kitchen to offer a training program for employment in food services. The Community Kitchen should be accessible outside of business hours to support use of the Gathering Hall at all times.

*Base Program Variation: The Base program does not include the Community Kitchen and associated Storage, as these spaces are not part of the existing NSNH.*

### Community Rooms

A range of community rooms has been provided to accommodate existing Neighbourhood House programs as well as some room for growth. A large Gathering Hall & Gym will serve as the location for large group activities and meetings, athletic activities, and the Food Bank. The Gathering Hall & Gym will be adjacent to the Commercial Kitchen and have access points to the rest of the House that may be locked to separate it from the remainder of the building. The Gathering Hall & Gym must accommodate occasional use for recreation activities and will have the minimum height of 25 ft. to accommodate athletic activities.

Large, Medium, and Small Community Rooms are provided to accommodate the range of programs offered both by the Neighbourhood House and by partner organizations. The small community room may be used for confidential discussions and one-on-one meetings with clients. This room may also be used for occasional visits by a Nurse or Doctor to deliver vaccines or exams. There is a desire to expand programming to offer visits by a dentist, which would also occur in this space.

2 Small Meeting Rooms have been provided to accommodate small meetings for the Learning Disabilities program. These rooms are not designated to any particular program however, and may be rented out for other use.

A computer room for instructional classes and programming has been provided to offer clients the opportunity to improve computer skills and literacy.

*Base Program Variation: The Base program does not include the 2 Small Meeting Rooms for the Learning Disabilities Program. In this scenario, the program will use the Small Community Rooms, which are shared amongst all programs. In addition, the Gathering Hall size has been reduced (and does not have a ceiling height of 25 ft.), as it is assumed in this scenario that it will not serve as a gym for recreation activities. In addition, the Base program does not include the Computer Room as this space is not part of the existing NSNH.*

#### *Food Bank*

The Food Bank is a vital program offered at the Neighbourhood House and serves as a vital point of contact for clients. Because of this aspect of the Food Bank, partner groups play an important role in the event. Opportunities to set up tables in the Gathering Hall and offer additional services, such as medical screenings, are made available to clients.

#### *Youth Services*

The core Youth Service programs are offered out of the John Braithwaite Community Centre with just a handful of services occurring at the Neighbourhood House as funding allows. These services include recreational programs, one-to-one counselling, and a drop-in centre. The primary need for Youth Services at this location is access to a multi-purpose room. The drop-in program attracts a number of youth and may have attendance of up to 40 to 50 people. For these events, the space must accommodate a number of activities as some youth may wish to engage in games while others may want to play a sport. This space must be flexible to accommodate the changing preferences of youth over time. Access to a smaller room for approximately 12 people is needed for programs such as life skills classes.

Teen Club is accommodated in the Medium size Community Room as this is similar in size to the existing space used in the NSNH (Marcino Room). The addition of a community room to accommodate the Teen Club allows for extended use of the Preschool space for childcare while also providing increased access to community room space for other programs in the future as the need arises.

*Base Program Variation: The Base program does not include the Medium size Community Room, requiring Teen Club to continue using the Preschool space in the afternoon.*

#### **Design Guidelines**

The following design guidelines deal with access and relationships that are required for the Administration component of the overall facility.

#### **Access Controls and Security**

Safety and security is an issue and accessibility should be limited to those spaces that are to be used during evenings and weekends so that users can't access restricted areas when they are unoccupied. A security point is required to separate the Gathering Hall and Commercial Kitchen from the rest of the building by locked doors.

**Circulation**

The hallways must be barrier free and sufficiently wide as to allow the free flow and easy access of people and equipment. This includes food carts, mammography equipment, and mobility devices such as wheelchairs and scooters. Elevators must be sufficiently large to hold individuals in mobility devices, strollers, and large equipment.

A dedicated drop-off/pick-up zone is needed for buses that take both youth and seniors groups to off-site activities. A large group often gathers at the entrance prior to these outings, and a dedicated area for boarding the bus is required.

The Food Bank requires weekly deliveries of food that must be stored on site both for the short and long-term. A dedicated storage area with refrigerators must be available on site and with accessibility to the Gathering Hall. A loading bay for deliveries must have easy access to the food storage space for loading and unloading of deliveries. Circulation must be wide enough to allow for easy movement of food carts from the storage room to the Gathering Hall.

The Gathering Hall, where the Food Bank will be located, must have a separate entrance so that the room can be accessed directly by the public without having to navigate through the house to reach the room. This allows for easier access both by clients in mobility devices and those who are uncomfortable in such an environment. The Main Gathering Room must be accessible on the ground level as an elevator may prohibit the majority of Food Bank clients from attending this vital service.

**Light and View**

Large windows should be provided to bring in sunlight and provide staff with a sense of orientation and views to the outdoors. The reception area should have clear lines of vision to the Living Room (included in Community component of program) to allow for passive security.

**Post Disaster**

The Neighbourhood House is not considered to be a post-disaster facility, and thus must not meet the associated construction standards. However, it does act as an Emergency Social Services centre and is prepared to shelter 150 people in an emergency. Storage for earthquake and disaster supplies is provided in the facility

## Component 2.0 - Childcare

### Component Description

The new Childcare space is designed for the care of 57 children. This includes:

- 12 Group Child Care spaces (under 36 months)
- 25 Group Child Care spaces (30 months to School Age)
- 20 Preschool spaces

The Childcare facility will include indoor activity spaces, support spaces, and outdoor space. Each age level's activity spaces and outdoor play areas must be separated to ensure that provincially mandated staff-to-child ratios are met.

The design of Childcare facilities is guided by the City of Vancouver *Childcare Design Guidelines (1993)* and *Childcare Technical Guidelines*. These documents present a prescribed functional program, describing the overall space requirements, the size and characteristics of specific spaces, and the technical requirements for the facility. It serves as the template for Childcare requirements in the Neighbourhood House.

### Program Space List

The space lists below indicates the total footprint of the Childcare area, including all indoor and outdoor activity spaces, support spaces, and circulation for both the Enhanced and Base scenarios. The Enhanced Program is based on City of Vancouver *Childcare Design Guidelines (1993)* and plans for the NSNH 13<sup>th</sup> Street Childcare location. The Base Program is modified slightly from those standards to economize space while still meeting provincial standards for childcare licensing. For detailed Childcare Area Tables, see Appendix A.

### Enhanced Program

Childcare- 57 Spaces	Space Net Area (m2)	Net Area (ft2)	Notes
2.1 Net Activity Area			
<i>Infant/Toddler- 12 spaces</i>	82	883	Includes Activity Room, Nap Room and Storage, and Quiet Room
<i>3 to 5- 25 Spaces</i>	128	1378	
<i>Preschool- 20 Spaces</i>	78	840	
2.2 Net Support Spaces			
<i>Infant/Toddler- 12 spaces</i>	60.5	651	Includes Cubbies, Kitchen, Storage, Parent's Room, Staff Office, Washrooms, and Laundry Room
<i>3 to 5- 25 Spaces</i>	71.3	767	
<i>Preschool- 20 Spaces</i>	123	1,324	
2.3 Stroller Parking	23	250	
	<b>Net Indoor Area</b>	<b>6,093</b>	
	Circulation (1.15)	<b>914</b>	
	<b>Total Indoor Assignable Area (1.15)</b>	<b>7,007</b>	
2.4 Covered Outdoor Space			
<i>Infant/Toddler- 12 spaces</i>	28	301	
<i>3 to 5- 25 Spaces</i>	45	484	
<i>Preschool- 20 Spaces</i>	33	355	
2.5 Open Outdoor Space			
<i>Infant/Toddler- 12 spaces</i>	100	1076	
<i>3 to 5- 25 Spaces</i>	305	3283	
<i>Preschool- 20 Spaces</i>	107	1152	
	<b>Net Outdoor Area</b>	<b>6,651</b>	
	<b>Total Childcare (Indoor and Outdoor)</b>	<b>13,658</b>	

## Base Program

<b>Childcare- 57 Spaces</b>	<b>Space Net Area (m2)</b>	<b>Net Area (ft2)</b>	<b>Notes</b>
2.1 Net Activity Area			
<i>Infant/Toddler- 12 spaces</i>	70	753	Includes Activity Room, Nap Room and Storage, and Quiet Room
<i>3 to 5- 25 Spaces</i>	115	1238	
<i>Preschool- 20 Spaces</i>	75.5	813	
2.2 Net Support Spaces			
<i>Infant/Toddler- 12 spaces</i>	50	538	Includes Cubbies, Kitchen, Storage, Parent's Room, Staff Office, Washrooms, and Laundry Room
<i>3 to 5- 25 Spaces</i>	71.3	767	
<i>Preschool- 20 Spaces</i>	115.5	1,234	
2.3 Stroller Parking	23	250	
<b>Net Indoor Area</b>		<b>5,593</b>	
Circulation (1.15)		<b>839</b>	
<b>Total Indoor Assignable Area (1.15)</b>		<b>6,432</b>	
2.4 Covered Outdoor Space			
<i>Infant/Toddler- 12 spaces</i>	18	194	
<i>3 to 5- 25 Spaces</i>	25	269	
<i>Preschool- 20 Spaces</i>	33	355	
2.5 Open Outdoor Space			
<i>Infant/Toddler- 12 spaces</i>	66	710	
<i>3 to 5- 25 Spaces</i>	150	1615	
<i>Preschool- 20 Spaces</i>	107	1152	
<b>Net Outdoor Area</b>		<b>4,295</b>	
<b>Total Childcare (Indoor and Outdoor)</b>		<b>10,727</b>	

While other Neighbourhood House programs use the preschool space in the existing facility, the childcare spaces in the facility will serve only childcare functions. Those programs that currently use childcare space will be accommodated in the Community Program spaces in the new facility. This will provide the Neighbourhood House with the flexibility to extend childcare service hours to weekends and evenings as the needs of the community changes.

*Base Program Variation: The number and type of rooms are unchanged between the Enhanced and Base program space lists. Only the size of some activity and outdoor areas are reduced in the Base program to economize space while continuing to meet provincial standards for childcare licensing.*

### Design Guidelines

While the *Guiding Documents* from the City of Vancouver provide guidelines for the indoor and outdoor childcare space, the following sections deal with access and relationships that are required for a Childcare facility integrated into the Neighbourhood House.

### Access Controls and Security

Access to the Childcare spaces must be restricted to childcare staff and parents/guardians and all doors and entryways must require electronic key access. This is to ensure security in those spaces both during operating hours as well as after hours when other areas of the building may be in use. Childcare components must be located in their own section or “wing” of the building. This will allow Childcare spaces to be locked and secure while other areas of the building are in use. The outdoor Childcare spaces must be fenced in to create a clear delineation between outdoor areas.

**Circulation**

Circulation must allow for easy access to the Childcare component by parents for drop-off and pick-up. The main entrance for Childcare must be separate from the main entrance for the Neighbourhood House and have direct access to 5 dedicated drop-off parking spots and 2 dedicated daycare staff parking. Spaces within the childcare component must be connected to allow for quick and easy access by staff with electronic key cards. The Outdoor areas must be connected directly to the indoor Childcare spaces. It is desirable, but not required, for the Childcare component to be located on the ground floor.

**Light and View**

Large windows should be provided to bring in sunlight and provide visitors with a sense of orientation. Low, but inoperable, windows are required to give children and staff visibility to the outdoor space. The Childcare spaces must have visibility to all corners of the room so that staff may supervise children while in the Kitchen and Bathroom/Laundry area.

**Activity Spaces**

Each of the four groups (Infant/Toddler/3-5/Preschool) have their own indoor activity space. These spaces must be designed for flexibility with an open layout for easy supervision by staff. Support spaces such as kitchens, bathrooms, and staffrooms must be located so that they may be shared between two or more activity spaces. Typically, sharing should occur between similar-aged program groups (infant and toddler, toddler and 3-5).

**Shared Support Spaces**

Support spaces include the kitchen, cubbies, storage, children's washrooms, accessible washroom, laundry, parent's room, and staff offices and are to be shared between childcare units.

**Storage**

Secure storage of equipment and supplies is needed in all Childcare spaces so that groups using the area after-hours aren't able to access those items. Storage for earthquake supplies and emergency equipment is provided in the Community Programs component of this program.



## Component 3.0 - Administration

### Component Description

Staff of the Neighbourhood house is involved in both administrative duties and the daily activities of the House. Given their integrated role in the house, it is important that they have dedicated administrative space that is within close proximity to community spaces. This allows for better integration with the programs they administer and contributes to the sense of community within the House. Volunteers are involved in most programs and are integral to supporting service delivery. Office space should accommodate NSNH staff who oversee Community Programs as well as touch-down space for use by volunteers.

### Program Space List

The space lists below indicates the total footprint of the Administration component for both the Enhanced and Base scenarios, including meeting rooms and storage.

#### Enhanced Program

Administration	Staff	Enclosed?	Number Spaces	Space Net Area (ft2)	Space Net Area (m2)	Net Area (ft2)	Circulation	Notes
3.1 Executive	Executive Director	Y	1	140	13	140	25	
	ED Assistant	Y	1	100	9.3	100	25	
3.2 Reception	Reception	N	1	250	23	250	35	Includes 2 workstations
3.3 Community Program	Manager	Y	1	120	11.15	120	25	
	Staff	N	2	100	9.3	200	35	Shared
	Volunteers	N	3	50	4.5	150	35	Shared
3.4 Accounting	Director of Finance	Y	1	140	13	140	25	
	Accountant	N	1	120	11.15	120	35	
	Accountant	N	1	70	6.5	70	35	
3.5 Teen Club	Teen Club Supervisor	Y	1	100	9.3	100	25	
	Youth Workers	N	2	70	7.5	140	35	2 Stations shared by 3 staff
3.6 Building Maintenance	Staff	Y	1	50	4.5	50	25	
3.7 IT/Fundraising	Staff	Y	1	120	11.15	120	25	
	Server Room/Cabinet	Y	1	100	9.3	100	25	
3.8 Meeting Rooms	Large Meeting Room	Y	1	320	29.7	320	25	Capacity of 16 to 18
	Small Meeting Room	Y	1	180	16.7	180	25	Capacity of 8 to 10
	Break-out Room	Y	2	120	11.15	240	25	Capacity of 3 to 5
3.9 Shared Spaces	Staff Room/Kitchen	Y	1	120	11.15	120	25	
	Copy/Office Supplies	Y	1	120	11.15	120	25	
3.10 Storage	Storage		6	10	1	60		Tall cabinets
	Storage Room (Basement)	Y	1	200	18.6	200	25	For Accounting Dept.
3.11 Edible Garden	Manager	Y	1	100	9.3	100	25	
	Staff	N	4	50	4.5	200	35	shared by 5 staff
	Work Area	N	1	200	18.6	200	35	
	Food Storage	Y	1	150	13.9	150	25	
<b>Subtotal Net Area</b>						<b>3690</b>		
Subtotal Circulation						680		
<b>Total Net Assignable Area</b>						<b>4370</b>		

## Base Program

Administration	Staff	Enclosed?	Number Spaces	Space Net Area (ft2)	Space Net Area (m2)	Net Area (ft2)	Circulation	Notes
3.1 Executive	Executive Director	Y	1	140	13	140	25	
	ED Assistant	Y	1	100	9.3	100	25	
3.2 Reception	Reception	N	1	250	23	250	35	Includes 2 workstations
3.3 Community Program	Manager	Y	1	120	11.15	120	25	
	Staff	N	2	100	9.3	200	35	Shared
	Volunteers	N	3	50	4.5	150	35	Shared
3.4 Accounting	Director of Finance	Y	1	140	13	140	25	
	Accountant	N	1	120	11.15	120	35	
	Accountant	N	1	70	6.5	70	35	
3.5 Teen Club	Teen Club Supervisor	Y	1	100	9.3	100	25	
	Youth Workers	N	2	70	7.5	140	35	2 Stations shared by 3 staff
3.6 Building Maintenance	Staff	Y	1	50	4.5	50	25	
3.7 IT/Fundraising	Staff	Y	1	120	11.15	120	25	
	Server Room/Cabinet	Y	1	100	9.3	100	25	
3.8 Meeting Rooms	Small Meeting Room	Y	1	180	16.7	180	25	Capacity of 8 to 10
	Break-out Room	Y	2	120	11.15	240	25	Capacity of 3 to 5
3.9 Shared Spaces	Staff Room/Kitchen	Y	1	120	11.15	120	25	
	Copy/Office Supplies	Y	1	120	11.15	120	25	
3.10 Storage	Storage		6	10	1	60		Tall cabinets
	Storage Room (Basement)	Y	1	200	18.6	200	25	For Accounting Dept.
3.11 Edible Garden	Manager	Y	1	100	9.3	100	25	
	Staff	N	4	50	4.5	200	35	shared by 5 staff
	Work Area	N	1	200	18.6	200	35	
	Food Storage	Y	1	150	13.9	150	25	
<b>Subtotal Net Area</b>						<b>3370</b>		
<b>Subtotal Circulation</b>						<b>655</b>		
<b>Total Net Assignable Area</b>						<b>4025</b>		

Closed offices have been provided for senior-level staff with all other staff operating in open workstations. The Executive Director and ED Assistant are both in enclosed offices, given their need for confidential discussions and file storage. Three touch-down spaces have been provided for volunteers and casual workers.

Meeting rooms are required for both staff-level meetings as well as small group meetings within a department or program. Small break-out rooms are needed for private one-on-one conversations, small meetings, and personal phone calls.

*Base Program Variation: The Large meeting room is not included as this space is not part of the existing NSNH.*

Storage is required for paper records that are accessed regularly by both Accounting and the Executive Director and Fundraiser. Additional storage has been provided for long-term storage of accounting files.

### Edible Garden Project

The Edible Garden Project is a partner program within the Neighbourhood House. It receives regular deliveries of produce directly to its office and needs direct access to a loading/unloading area. Produce is stored in a room next to the offices. Volunteer training also takes place in this space and preparation of food bundles happens at a

central worktable. Educational programming for school-aged children occurs at schools and is not done in the Neighbourhood House.

1 dedicated office and 4 open workstations are required. A workroom with table for preparing produce for market is required in addition to storage for produce. A large sink for washing vegetables next to a counter is required. Food storage should consist of open shelving as well as a refrigerator. A closet or tool shed that is accessible from the outside of the building is required for storing gardening equipment and tools.

A separate entrance for the Edible Garden Project spaces is required to allow free movement of staff for this program during all hours.

*Base Program Variation: The Edible Garden Project is not included in the Base Program, even though it currently occupies space in the NSNH. This was done to demonstrate potential savings in space that may be realized by removing a non-essential component of the NSNH.*

### **Design Guidelines**

The following design guidelines deal with access and relationships that are required for the Administration component of the overall facility.

#### **Access Controls and Security**

Access to the Administration spaces must be restricted to administrative staff and all doors and entryways must require electronic key access. This is to ensure security in those spaces both during operating hours as well as after hours when other areas of the building may be in use. The reception area should have clear lines of vision to the Living Room (included in Community component of program) to allow for passive security by reception staff. The reception area should be equipped with display monitors connected to the security system. Front counter staff must be equipped with portable panic buttons to be worn when in the Neighbourhood House.

#### **Circulation**

Access to the Administration spaces must be restricted to administrative staff by electronic key access. This is to ensure security in those spaces both during operating hours as well as after hours when other areas of the building may be in use. Close proximity and connections between departments are required so that staff may collaborate easily without entering other areas of the facility to do so.

#### **Light and View**

Large windows should be provided to bring in sunlight and provide staff with a sense of orientation and views to the outdoors. The reception area should have clear lines of vision to the Living Room (included in Community component of program) to allow for passive security.

# Appendix A: Detailed Childcare Area Tables






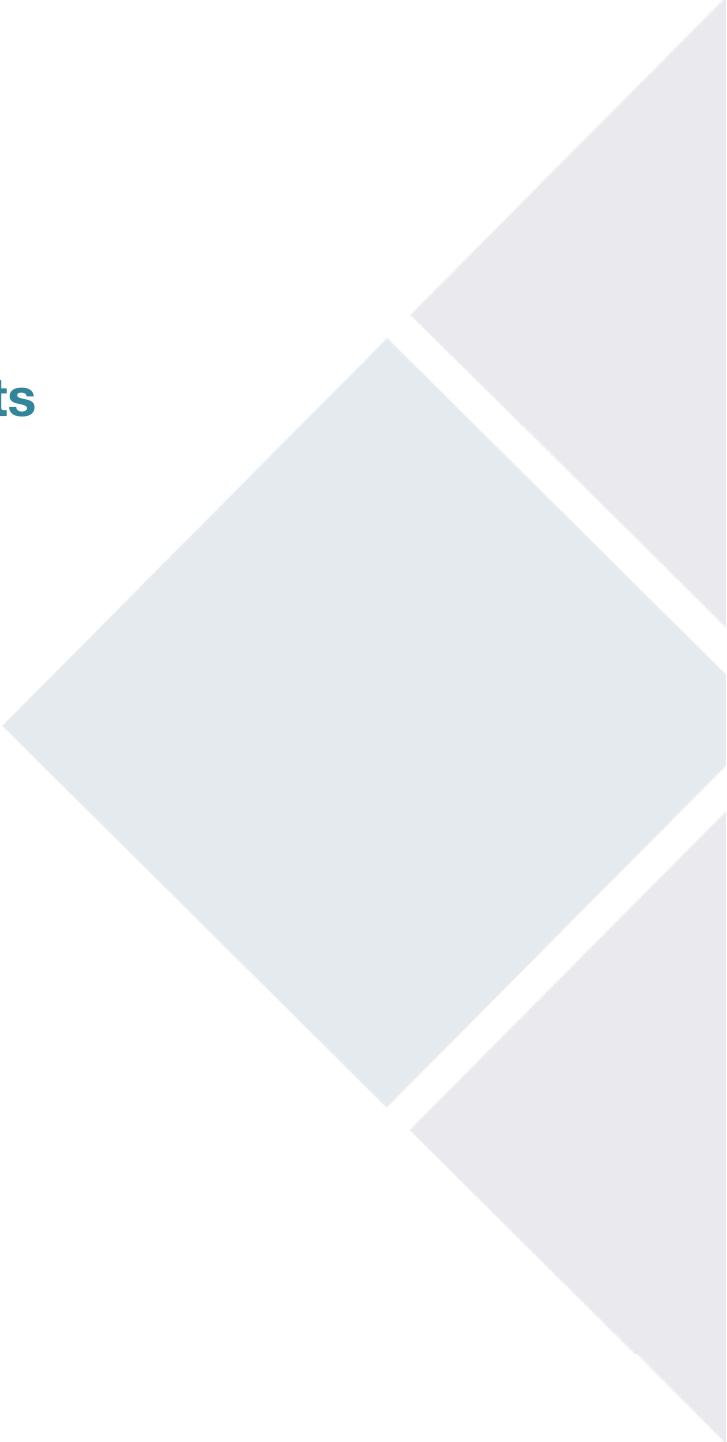
Infant/Toddler- 12 Children	Area (sq ft)	
	Large	Small
<b>Activity Area</b>		
Activity Room	457	350
Nap Room	280	258
Nap Storage	48	48
Quiet Room	97	97
<i>Total Activity Area</i>	<b>883</b>	<b>753</b>
<b>Support Area</b>		
Cubbies	108	48
Kitchen	102	102
Storage	108	75
Washroom/Diapering Area	81	81
Parent's Room	65	65
Washroom- Staff	48	48
Staff Office	75	75
Laundry/Janitorial	65	43
<i>Total Support Area</i>	<b>651</b>	<b>538</b>
<b>Total Indoor Area</b>	<b>1534</b>	<b>1292</b>
<b>Outdoor Area</b>		
Covered Outdoor Space	301	194
Open Outdoor Space	1076	710
<b>Total Outdoor Area</b>	<b>1076</b>	<b>710</b>
<b>Infant/Toddler Total (Indoor and Outdoor)</b>	<b>2610</b>	<b>2002</b>

3 to 5- 25 Children	Area (sq ft)	
	Large	Small
<b>Activity Area</b>		
Dedicated Art Area	108	108
Table Area	151	151
Area for Other Activity	651	538
Quiet Room	97	70
Gross Motor/Nap Room	323	323
Storage with Large Motor/Nap Room	48	48
<i>Total Activity Area</i>	<b>1378</b>	<b>1238</b>
<b>Support Area</b>		
Cubby	151	151
Kitchen	102	102
Handicapped Accessible Children's W/C	97	97
Storage	86	86
Parent's Room	65	65
Staff Office	75	75
Childcare Coordinator Office	100	100
Handicapped Accessible Staff W/C with Diapering A	48	48
Laundry/Janitorial	43	43
<i>Total Support Area</i>	<b>767</b>	<b>767</b>
<b>Total Indoor Area</b>	<b>2145</b>	<b>2005</b>
<b>Outdoor Area</b>		
Covered Outdoor Space	484	269
Open Outdoor Space	3283	1615
<b>Total Outdoor Area</b>	<b>3767</b>	<b>1884</b>
<b>3 - 5 Total (Indoor and Outdoor)</b>	<b>5913</b>	<b>3889</b>

Preschool - 20 Children	Area (sq ft)	
	Large	Small
<b>Activity Area</b>		
Art Area	81	81
Table Area	151	151
Other Activity Setting	511	511
Quiet Room	97	70
<i>Total Activity Area</i>	<b>840</b>	<b>813</b>
<b>Support Area</b>		
Cubby	129	129
Handicapped Accessible Children's W/C	75	75
Storage	151	97
Staff Office & W/C	129	129
<i>Total Support Area</i>	<b>484</b>	<b>431</b>
<b>Total Indoor Area</b>	<b>1324</b>	<b>1243</b>
<b>Outdoor Area</b>		
Covered Outdoor Space	355	355
Open Outdoor Space	1152	1152
<b>Total Outdoor Area</b>	<b>1507</b>	<b>1507</b>
<b>Preschool Total (Indoor and Outdoor)</b>	<b>2831</b>	<b>2750</b>

# Appendix B: Room Data Sheets

-  **Component 1.0 - Community**
-  **Component 2.0 - Childcare**
-  **Component 3.0 - Administration**







## Community Room

**Space Type:** Community Room- enclosed

**Description:** An enclosed room with the ability to host programs, community events, and meetings  
Tables and chairs may be brought in for some programs

<p><b>Occupancy:</b> staff positions: 0 variable: 3 to 50</p>	<p><b>Elements:</b> qty</p> <ul style="list-style-type: none"><li>1 large table</li><li>8 chairs</li><li>1 projector</li><li>•</li><li>•</li><li>•</li><li>•</li><li>•</li><li>•</li><li>•</li><li>•</li><li>•</li><li>•</li><li>•</li><li>•</li><li>•</li><li>•</li><li>•</li><li>•</li><li>•</li></ul>	
<hr/> <p><b>Access:</b> zone: community</p> <hr/> <p>access/security control: card access</p> <hr/> <p>required connection: as per diagram</p> <hr/> <p>other:</p>		
<hr/> <p><b>Shell: critical dimensions:</b> height: 9-10' (2700-3000mm)</p> <p>plan: no special req.</p> <p>doors: no special req.</p> <hr/> <p>structural loads floor: light (50 psf) (2.4 KPa)</p> <p>suspension req: no special req.</p> <hr/> <p>acoustics: internal: absorption</p> <p>ac. separation: very low background noise</p> <hr/> <p>natural light: reqmnt: essential</p> <p>l. control: glare control</p> <hr/> <p>visual connection reqmnt: Gen. Bldg. Circulation, Internal Circulation</p> <p>v. control: no special req.</p> <hr/> <p>other:</p>		
<hr/> <p><b>Services:</b> lighting: ambient: moderate/high level (30-55fc)(320-590lux), var lev ctrl</p> <p>l. special: no special req.</p> <hr/> <p>power: distrbtn: perimeter</p> <p>p. special: no special req.</p> <hr/> <p>communications: tel: telephone req'd</p> <p>c. other: no special req.</p> <hr/> <p>data: distrbtn: perimeter wall outlets</p> <p>d. other: wireless coverage, display media connection</p> <hr/> <p>security: no special req.</p> <hr/> <p>plumbing: water: no special req.</p> <p>drainage: no special req.</p> <p>gas: no special req.</p> <p>steam: no special req.</p> <p>other: no special req.</p> <hr/> <p>HVAC: environ. high/variable occupant loads</p> <p>h. special: no special req.</p> <hr/> <p>other:</p>		
<hr/> <p><b>Finishes:</b> floor: carpet/carpet tile, wood flooring, or sheet flooring</p> <p>walls: painted surface</p> <p>ceiling: susp. lay-in tile</p> <hr/> <p>special features:</p>		
		<hr/> <p><b>Notes:</b></p>

## Gathering Hall & Gym

**Space Type:** Gathering Hall & Gym

**Description:** Large gathering hall for food bank and other community events and programs  
 Recreation activities may also occur in this space, requiring the full gym height (see Note below)  
 Tables and chairs will be stored in an adjacent storage room for frequent use

<p><b>Occupancy:</b>     <b>staff positions:</b> 0                                          <b>variable:</b> 150 to 200</p> <hr/> <p><b>Access:</b>                         <b>zone:</b> community                 <b>access/security control:</b> card access                 <b>required connection:</b> as per diagram            <b>other:</b> must be located on ground floor</p> <hr/> <p><b>Shell:</b> <b>critical dimensions:</b>    <i>height:</i> 25' (76200mm)            <i>plan:</i> no special req.            <i>doors:</i> doubl doors req.                 <b>structural loads</b>      <i>floor:</i> moderate (50 - 100 psf) (2.4 - 4.8 Kpa)            <i>suspension req:</i> no special req.                 <b>acoustics:</b>      <i>internal:</i> absorption            <i>ac. separation:</i> very low background noise                 <b>natural light:</b>      <i>reqmnt:</i> essential            <i>l. control:</i> glare control                 <b>visual connection</b>      <i>reqmnt:</i> Gen. Bldg. Circulation, Internal Circulation            <i>v. control:</i> no special req.            <b>other:</b></p> <hr/> <p><b>Services:</b>                         <b>lighting:</b>    <i>ambient:</i> moderate/high level (30-55fc)(320-590lux), var lev ctrl            <i>l. special:</i> no special req.            <b>power:</b>      <i>distrbtn:</i> perimeter outlets            <i>p. special:</i> no special req.            <b>communications:</b>    <i>tel:</i> no special req.            <i>c. other:</i> no special req.            <b>data:</b>         <i>distrbtn:</i> wall outlets            <i>d. other:</i> wireless coverage, display media connection            <b>security:</b>         no special req.            <b>plumbing:</b>     <i>water:</i> no special req.            <i>drainage:</i> no special req.            <i>gas:</i> no special req.            <i>steam:</i> no special req.            <i>other:</i> no special req.            <b>HVAC:</b>         <i>environ:</i> high/variable occupant loads            <i>h. special:</i> no special req.            <b>other:</b></p> <hr/> <p><b>Finishes:</b>                         <b>floor:</b>                 wood flooring            <b>walls:</b>                 painted surface            <b>ceiling:</b>                susp. lay-in tile            <b>special features:</b></p>	<p><b>Elements:</b></p> <p>qty</p> <ul style="list-style-type: none"> <li>•</li> <li>•</li> <li>•</li> <li>•</li> <li>•</li> <li>•</li> <li>•</li> <li>•</li> <li>•</li> <li>•</li> <li>•</li> <li>•</li> <li>•</li> <li>•</li> <li>•</li> <li>•</li> <li>•</li> <li>•</li> <li>•</li> </ul> <hr/> <p><b>Notes:</b></p> <p>25' height gym will not be required should the new facility proceed without an agreement with Recreation services</p>
--	--

## Gathering Hall

**Space Type:** Community Room- enclosed

**Description:** An enclosed room with the ability to host small meetings and work teams

Seating, worksurfaces, and whiteboard are required

The meeting rooms will be available to administration staff and should be directly accessible from staff offices.

<p><b>Occupancy:</b>      <b>staff positions:</b> 0             <b>variable:</b> 150 to 200</p> <hr/> <p><b>Access:</b>                                    <b>zone:</b> community  <b>access/security control:</b> card access  <b>required connection:</b> as per diagram  <b>other:</b> must be located on ground floor</p> <hr/> <p><b>Shell: critical dimensions:</b>    <b>height:</b> 16' (4877mm)             <b>plan:</b> no special req.             <b>doors:</b> doubl doors req.  <b>structural loads</b>      <b>floor:</b> moderate (50 - 100 psf) (2.4 - 4.8 Kpa)             <b>suspension req:</b> no special req.  <b>acoustics:</b>      <b>internal:</b> absorption             <b>ac. separation:</b> very low background noise  <b>natural light:</b>      <b>reqmnt:</b> essential             <b>l. control:</b> glare control  <b>visual connection</b>      <b>reqmnt:</b> Gen. Bldg. Circulation, Internal Circulation             <b>v. control:</b> no special req.  <b>other:</b></p> <hr/> <p><b>Services:</b>                            <b>lighting:</b>      <b>ambient:</b> moderate/high level (30-55fc)(320-590lux), var lev ctrl             <b>l. special:</b> no special req.  <b>power:</b>      <b>distrbtn:</b> perimeter outlets             <b>p. special:</b> no special req.  <b>communications:</b>      <b>tel:</b> no special req.             <b>c. other:</b> no special req.  <b>data:</b>      <b>distrbtn:</b> wall outlets             <b>d. other:</b> wireless coverage, display media connection  <b>security:</b>                            no special req.  <b>plumbing:</b>      <b>water:</b> no special req.             <b>drainage:</b> no special req.             <b>gas:</b> no special req.             <b>steam:</b> no special req.             <b>other:</b> no special req.  <b>HVAC:</b>      <b>environ.</b> high/variable occupant loads             <b>h. special:</b> no special req.  <b>other:</b></p> <hr/> <p><b>Finishes:</b>                            <b>floor:</b>                            wood flooring or sheet flooring             <b>walls:</b>                            painted surface             <b>ceiling:</b>                            susp. lay-in tile  <b>special features:</b></p>	<p><b>Elements:</b></p> <p>qty</p> <ul style="list-style-type: none"> <li>.</li> <li>.</li> <li>.</li> <li>.</li> <li>.</li> <li>.</li> <li>.</li> <li>.</li> <li>.</li> <li>.</li> <li>.</li> <li>.</li> <li>.</li> <li>.</li> <li>.</li> <li>.</li> <li>.</li> <li>.</li> </ul> <p><b>Notes:</b></p>
--	--



## WC

Space Type: WC

Description: WC-Universal

<p><b>Occupancy:</b> staff positions: 0 variable: 0</p>	<p><b>Elements:</b> qty .</p>
<p><b>Access:</b> zone: community access/security control: no special req. required connection: as per diagram other:</p>	
<p><b>Shell:</b> critical dimensions: height: 9-10' (2700-3000mm) plan: no special req. doors: no special req. structural loads floor: light (50 psf) suspension req: no special req. acoustics: internal: no special req. ac. separation: no special req. natural light: reqmnt: optional l. control: privacy glass visual connection reqmnt: no special req. v. control: privacy considerations for entryway other:</p>	
<p><b>Services:</b> lighting: ambient: moderate/high level l. special: no special req. power: distrbtn: code req. adequate p. special: no special req. communications: tel: no req. c. other: no special req. data: distrbtn: no req. d. other: no special req. security: no special req. plumbing: water: req. - sinks, toilets drainage: req. - sinks, toilets gas: no special req. steam: no special req. other: no special req. HVAC: environ. no special req. h. special: no special req. other: no special req.</p>	
<p><b>Finishes:</b> floor: sheet flooring or vinyl walls: painted surface ceiling: suspended lay-in tile special features:</p>	<p><b>Notes:</b></p>









## Laundry

**Space Type:** Laundry

**Description:** Laundry room for use by community programs

<b>Occupancy:</b> staff positions: 0 variable: 0	<b>Elements:</b> qty 1 Washing Machine 1 Dryer • Counter with sink • • • • • • • • • • • • • • • • • • •
<b>Access:</b> zone: community access/security control: card access required connection: as per diagram other:	
<b>Shell: critical dimensions:</b> height: 9-10' (2700-3000mm) plan: no special req. doors: no special req. structural loads floor: light (50 psf) (2.4 KPa) suspension req: no special req. acoustics: internal: absorption ac. separation: no special req. natural light: reqmnt: no req. l. control: no special req. visual connection reqmnt: no special req. v. control: no special req. other:	
<b>Services:</b> lighting: ambient: moderate/high level (30-55fc)(320-590lux), var lev ctrl l. special: feature area lighting power: distrbtn: counter height outlets, perimeter outlets p. special: no special req. communications: tel: no req. c. other: no special req. data: distrbtn: no special req. d. other: wireless coverage security: no special req. plumbing: water: req. - sink drainage: req. - sink gas: no special req. steam: no special req. other: no special req. HVAC: environ. variable occupant loads h. special: no special req. other:	
<b>Finishes:</b> floor: sheet flooring walls: painted surface, ceramic tile ceiling: susp. lay-in tile special features:	
<b>Notes:</b>	

## Computer Room

**Space Type:** Computer Room

**Description:** Storage of office supplies and copy machine  
Should be centrally located within component

<p><b>Occupancy:</b>    <b>staff positions:</b> 0                   <b>variable:</b> 12</p> <hr/> <p><b>Access:</b>        <b>zone:</b> Community                   <b>access/security control:</b> card access                   <b>required connection:</b> as per diagram                   <b>other:</b></p> <hr/> <p><b>Shell: critical dimensions:</b>    <i>height:</i> 9-10' (2700-3000mm)   <i>plan:</i> no special req.   <i>doors:</i> no special req.                   <b>structural loads</b>     <i>floor:</i> light (50 psf) (2.4 KPa)   <i>suspension req:</i> no special req.                   <b>acoustics:</b>     <i>internal:</i> absorption   <i>ac. separation:</i> no special req.                   <b>natural light:</b>    <i>reqmnt:</i> no special req.   <i>l. control:</i> glare control                   <b>visual connection</b>   <i>reqmnt:</i> Living room and reception   <i>v. control:</i> no special req.                   <b>other:</b></p> <hr/> <p><b>Services:</b>        <b>lighting:</b>    <i>ambient:</i> moderate/high level (30-55fc)(320-590lux), var lev ctrl   <i>l. special:</i> feature area lighting                   <b>power:</b>     <i>distrbtn:</i> perimeter outlets to each workstation   <i>p. special:</i> no special req.                   <b>communications:</b>    <i>tel:</i> no special req.   <i>c. other:</i> no special req.                   <b>data:</b>        <i>distrbtn:</i> perimeter locations   <i>d. other:</i> wireless coverage                   <b>security:</b>        no special req.                   <b>plumbing:</b>    <i>water:</i> no special req.   <i>drainage:</i> no special req.   <i>gas:</i> no special req.   <i>steam:</i> no special req.   <i>other:</i> no special req.                   <b>HVAC:</b>     <i>environ.</i> variable occupant loads   <i>h. special:</i> no special req.                   <b>other:</b></p> <hr/> <p><b>Finishes:</b>        <b>floor:</b>        carpet/carpet tile                   <b>walls:</b>        painted surface                   <b>ceiling:</b>       susp. lay-in tile                   <b>special features:</b></p>	<p><b>Elements:</b></p> <p>qty</p> <p>12 Computer Workstations</p> <ul style="list-style-type: none"> <li>•</li> <li>•</li> <li>•</li> <li>•</li> <li>•</li> <li>•</li> <li>•</li> <li>•</li> <li>•</li> <li>•</li> <li>•</li> <li>•</li> <li>•</li> <li>•</li> <li>•</li> <li>•</li> <li>•</li> <li>•</li> </ul> <p><b>Notes:</b></p>
---	--



## Washroom/Diapering

Space Type: WC

Description: WC-Child/Infant

Occupancy: staff positions: 0  
variable: 0

Access: zone: childcare  
access/security control: key lock control  
required connection: activity room  
other:

Shell: critical dimensions: height: 9-10' (2700-3000mm)  
plan: no special req.  
doors: no special req.  
structural loads floor: light (50 psf)  
suspension req: no special req.  
acoustics: internal: no special req.  
ac. separation: no special req.  
natural light: reqmnt: optional  
l. control: privacy glass  
visual connection reqmnt: no special req.  
v. control: privacy considerations for entryway  
other:

Services: lighting: ambient: moderate/high level  
l. special: no special req.  
power: distrbtn: code req. adequate  
p. special: no special req.  
communications: tel: no req.  
c. other: no special req.  
data: distrbtn: no req.  
d. other: no special req.  
security: no special req.  
plumbing: water: req. - sinks, toilets  
drainage: req. - sinks, toilets  
gas: no special req.  
steam: no special req.  
other: no special req.  
HVAC: environ. no special req.  
h. special: no special req.  
other: no special req.

Finishes: floor: sheet flooring or vinyl  
walls: painted surface  
ceiling: suspended lay-in tile  
special features: Sinks at toilets at child height

### Elements:

qty  
1 Changing table/surface  
.  
.  
.  
.  
.  
.  
.  
.  
.  
.  
.  
.  
.  
.  
.  
.  
.  
.  
.  
.  
.  
.  
.

### Notes:

## Activity Room

**Space Type:** Activity Room

**Description:** Open activity area for play  
 Open areas with tables and chairs and storage for toys and books

<p><b>Occupancy:</b> staff positions: 2            children 12, 20, or 25</p>	<p><b>Elements:</b></p> <p>qty</p> <ul style="list-style-type: none"> <li>• child height tables</li> <li>• child height seating for tables</li> <li>• soft seating</li> <li>•</li> <li>•</li> <li>•</li> <li>•</li> <li>•</li> <li>•</li> <li>•</li> <li>•</li> <li>•</li> <li>•</li> <li>•</li> <li>•</li> <li>•</li> <li>•</li> <li>•</li> </ul>
<p><b>Access:</b> zone: childcare</p> <p>access/security control: card access</p> <p>required connection: Nap room, storage, and staff office</p> <p>other:</p>	
<p><b>Shell:</b> critical dimensions: height: 9-10' (2700-3000mm)</p> <p>plan: no special req.</p> <p>doors: no special req.</p> <p>structural loads floor: light (50 psf)</p> <p>suspension req: no special req.</p> <p>acoustics: internal: absorption</p> <p>ac. separation: very low background noise</p> <p>natural light: reqmnt: essential</p> <p>l. control: glare control</p> <p>visual connection reqmnt: access/internal circulation, staff office</p> <p>v. control: no special req.</p> <p>other:</p>	
<p><b>Services:</b> lighting: ambient: moderate/high level (30-55fc)(320-590lux), var lev ctrl</p> <p>l. special: feature area lighting</p> <p>power: distrbtn: perimeter outlets</p> <p>p. special: no special req.</p> <p>communications: tel: no req.</p> <p>c. other: no special req.</p> <p>data: distrbtn: perimeter locations, to carrels</p> <p>d. other: wireless coverage</p> <p>security: no special req.</p> <p>plumbing: water: no special req.</p> <p>drainage: no special req.</p> <p>gas: no special req.</p> <p>steam: no special req.</p> <p>other: no special req.</p> <p>HVAC: environ. variable occupant loads</p> <p>h. special: no special req.</p> <p>other:</p>	
<p><b>Finishes:</b> floor: carpet/carpet tile, sheet flooring in kitchenette area</p> <p>walls: painted surface, ceramic tile</p> <p>ceiling: susp. lay-in tile</p> <p>special features: character defining finishes</p>	
<p><b>Notes:</b></p>	

## Nap Room

**Space Type:** Nap Room

**Description:** Quiet room for napping  
open area for mats

<p><b>Occupancy:</b> staff positions: 2 children 12, 20, or 25</p>	<p><b>Elements:</b></p> <p>qty</p> <ul style="list-style-type: none"><li>•</li><li>•</li><li>•</li><li>•</li><li>•</li><li>•</li><li>•</li><li>•</li><li>•</li><li>•</li><li>•</li><li>•</li><li>•</li><li>•</li><li>•</li><li>•</li></ul>
<hr/> <p><b>Access:</b> zone: childcare</p> <p>access/security control: no req.</p> <p>required connection: activity room</p> <p>other:</p>	
<hr/> <p><b>Shell:</b> critical dimensions: height: 9-10' (2700-3000mm)</p> <p>plan: no special req.</p> <p>doors: no special req.</p> <p>structural loads floor: light (50 psf)</p> <p>suspension req: no special req.</p> <p>acoustics: internal: absorption</p> <p>ac. separation: very low background noise</p> <p>natural light: reqmnt: essential</p> <p>l. control: glare control</p> <p>visual connection reqmnt: access/internal circulation, staff office</p> <p>v. control: no special req.</p> <p>other:</p>	
<hr/> <p><b>Services:</b> lighting: ambient: moderate/high level (30-55fc)(320-590lux), var lev ctrl</p> <p>l. special: feature area lighting</p> <p>power: distrbtn: perimeter outlets</p> <p>p. special: no special req.</p> <p>communications: tel: no req.</p> <p>c. other: no special req.</p> <p>data: distrbtn: perimeter locations, to carrels</p> <p>d. other: wireless coverage</p> <p>security: no special req.</p> <p>plumbing: water: no special req.</p> <p>drainage: no special req.</p> <p>gas: no special req.</p> <p>steam: no special req.</p> <p>other: no special req.</p> <p>HVAC: environ. variable occupant loads</p> <p>h. special: no special req.</p> <p>other:</p>	
<hr/> <p><b>Finishes:</b> floor: carpet/carpet tile</p> <p>walls: painted surface, ceramic tile</p> <p>ceiling: susp. lay-in tile</p> <p>special features: character defining finishes</p>	

## Childcare Storage

**Space Type:** Storage for program supplies such as toys, games, art supplies

**Description:** Flexible shelving for storage

Should be centrally located within component

<p><b>Occupancy:</b> staff positions: 0 variable: 0</p> <hr/> <p><b>Access:</b> zone: childcare access/security control: key lock control required connection: activity room other:</p> <hr/> <p><b>Shell:</b> critical dimensions: height: 9-10' (2700-3000mm) plan: no special req. doors: no special req. structural loads floor: light (50 psf) suspension req: no special req. acoustics: internal: no special req. ac. separation: no special req. natural light: reqmnt: no req. l. control: glare control visual connection reqmnt: no special req. v. control: no special req. other:</p> <hr/> <p><b>Services:</b> lighting: ambient: moderate/high level (30-55fc)(320-590lux), var lev ctrl l. special: no special req. power: distrbtn: code req, adequate p. special: no special req. communications: tel: no req. c. other: no special req. data: distrbtn: no req. d. other: no special req. security: no special req. plumbing: water: no special req. drainage: no special req. gas: no special req. steam: no special req. other: no special req. HVAC: environ. no special req. h. special: no special req. other:</p> <hr/> <p><b>Finishes:</b> floor: sheet flooring or vinyl walls: painted surface ceiling: susp. lay-in tile special features:</p>	<p><b>Elements:</b></p> <p>qty</p> <ul style="list-style-type: none"> <li>• shelving</li> <li>•</li> <li>•</li> <li>•</li> <li>•</li> <li>•</li> <li>•</li> <li>•</li> <li>•</li> <li>•</li> <li>•</li> <li>•</li> <li>•</li> <li>•</li> <li>•</li> <li>•</li> <li>•</li> <li>•</li> <li>•</li> </ul> <hr/> <p><b>Notes:</b></p>
---	--





### Cubbies (Entryway)

**Space Type:** Cubbies

**Description:** Cubby storage for children's personal items

<p><b>Occupancy:</b>     staff positions: 0                             children 12, 20, or 25</p> <hr/> <p><b>Access:</b>                  zone: childcare ..... <b>access/security control:</b> no req. ..... <b>required connection:</b> activity room ..... <b>other:</b></p> <hr/> <p><b>Shell:</b>     critical dimensions:     height: 9-10' (2700-3000mm)     plan: no special req.     doors: no special req. ..... <b>structural loads</b>                 floor: light (50 psf)     suspension req: no special req. ..... <b>acoustics:</b>     internal: absorption     ac. separation: very low background noise ..... <b>natural light:</b>     reqmnt: no req.     l. control: no special req. ..... <b>visual connection</b>     reqmnt: access/internal circulation, staff office     v. control: no special req. ..... <b>other:</b></p> <hr/> <p><b>Services:</b>                          lighting:     ambient: moderate/high level (30-55fc)(320-590lux), var lev ctrl     l. special: feature area lighting ..... <b>power:</b>                 distrbtn: perimeter outlets     p. special: no special req. ..... <b>communications:</b>         tel: no special req.     c. other: no special req. ..... <b>data:</b>                                 distrbtn: perimeter locations     d. other: wireless coverage ..... <b>security:</b>                                 no special req. ..... <b>plumbing:</b>                                 water: no special req.     drainage: no special req.     gas: no special req.     steam: no special req.     other: no special req. ..... <b>HVAC:</b>                                 environ: variable occupant loads     h. special: no special req. ..... <b>other:</b></p> <hr/> <p><b>Finishes:</b>                                 floor:                                 carpet/carpet tile ..... <b>walls:</b>                                 painted surface, ceramic tile ..... <b>ceiling:</b>                                 susp. lay-in tile ..... <b>special features:</b>                                 character defining finishes</p>	<p><b>Elements:</b> qty</p> <ul style="list-style-type: none"> <li>1 child height table</li> <li>4 child height seating</li> <li>.</li> <li>.</li> <li>.</li> <li>.</li> <li>.</li> <li>.</li> <li>.</li> <li>.</li> <li>.</li> <li>.</li> <li>.</li> <li>.</li> <li>.</li> <li>.</li> <li>.</li> <li>.</li> <li>.</li> <li>.</li> <li>.</li> <li>.</li> <li>.</li> </ul> <hr/> <p><b>Notes:</b></p>
--	--

## Kitchen

**Space Type:** Kitchen

**Description:** Kitchen for food prep

**Occupancy:** staff positions: 1  
children 0

**Access:** zone: childcare

access/security control: no req.

required connection: activity room

other:

**Shell:** critical dimensions: height: 9-10' (2700-3000mm)

plan: no special req.

doors: no special req.

structural loads floor: light (50 psf)

suspension req: no special req.

acoustics: internal: absorption

ac. separation: very low background noise

natural light: reqmnt: no req.

l. control: no special req.

visual connection reqmnt: activity room

v. control: no special req.

other:

**Services:** lighting: ambient: moderate/high level (30-55fc)(320-590lux), var lev ctrl

l. special: feature area lighting

power: distrbtn: counter height outlets, perimeter outlets

p. special: no special req.

communications: tel: no req.

c. other: no special req.

data: distrbtn: no special req.

d. other: wireless coverage

security: no special req.

plumbing: water: req. - sink

drainage: req. - sink

gas: no special req.

steam: no special req.

other: no special req.

HVAC: environ. variable occupant loads

h. special: no special req.

other:

**Finishes:** floor: carpet/carpet tile, sheet flooring in kitchenette area

walls: painted surface, ceramic tile

ceiling: susp. lay-in tile

special features: character defining finishes

### Elements:

qty

1 Refrigerator

1 Stove/Oven

1 Microwave

•

•

•

•

•

•

•

•

•

•

•

•

•

•

•

•

•

•

•

•

•

### Notes:

## Parent's Room

**Space Type:** Office- parent's room

**Description:** General office

<p><b>Typical Occupancy:</b></p> <p>staff positions: var</p> <p>variable: var</p> <hr/> <p><b>Access:</b></p> <p>zone: childcare</p> <p>access/security control: card access</p> <p>required connection: as per diagram</p> <p>other:</p> <hr/> <p><b>Shell: critical dimensions:</b></p> <p>height: 9-10' (2700-3000mm)</p> <p>plan: no special req.</p> <p>doors: no special req.</p> <p><b>structural loads</b></p> <p>floor: light (50 psf)</p> <p>suspension req: no special req.</p> <p><b>acoustics:</b></p> <p>internal: no special req.</p> <p>ac. separation: very low background noise</p> <p><b>natural light:</b></p> <p>reqmnt: essential</p> <p>l. control: glare control</p> <p><b>visual connection</b></p> <p>reqmnt: as req'd</p> <p>v. control: privacy blinds</p> <p>other:</p> <hr/> <p><b>Services:</b></p> <p><b>lighting:</b> ambient: moderate/high level (30-55 fc) (320-590 lux)</p> <p>l. special: no special req.</p> <p><b>power:</b> distrbtn: to each workstation</p> <p>p. special: no special req.</p> <p><b>communications:</b> tel: to each workstation</p> <p>c. other: no special req.</p> <p><b>data:</b> distrbtn: perimeter locations</p> <p>d. other: wireless coverage</p> <p><b>security:</b> no special req.</p> <p><b>plumbing:</b> water: no special req.</p> <p>drainage: no special req.</p> <p>gas: no special req.</p> <p>steam: no special req.</p> <p>other: no special req.</p> <p><b>HVAC:</b> environ. no special req.</p> <p>h. special: no special req.</p> <p>other:</p>	<p><b>Typical Elements:</b></p> <p>qty</p> <p>1 Workstations</p> <p>1 Filing Cabinets</p> <p>1 Seating</p> <p>.</p> <p>.</p> <p>.</p> <p>.</p> <p>.</p> <p>.</p> <p>.</p> <p>.</p> <p>.</p> <p>.</p> <p>.</p> <p>.</p> <p>.</p> <p>.</p> <p>.</p> <p>.</p> <p>.</p> <p>.</p>
<p><b>Finishes:</b></p> <p>floor: carpet/carpet tile</p> <p>walls: painted surface</p> <p>ceiling: susp. lay-in tile</p> <p>special features:</p>	<p><b>Notes:</b></p>

**Office**

**Space Type:** Office- enclosed

**Description:** General office

**Typical Occupancy:** staff positions: 1  
variable: var

**Access:** zone: childcare  
access/security control: card access  
required connection: as per diagram  
other:

**Shell:** critical dimensions: height: 9-10' (2700-3000mm)  
plan: no special req.  
doors: no special req.  
structural loads floor: light (50 psf)  
suspension req: no special req.  
acoustics: internal: no special req.  
ac. separation: very low background noise  
natural light: reqmnt: essential  
l. control: glare control  
visual connection reqmnt: as req'd  
v. control: privacy blinds  
other:

**Services:** lighting: ambient: moderate/high level (30-55 fc) (320-590 lux)  
l. special: no special req.  
power: distrbtn: to each workstation  
p. special: no special req.  
communications: tel: to each workstation  
c. other: no special req.  
data: distrbtn: to each workstation  
d. other: wireless coverage  
security: key card access  
plumbing: water: no special req.  
drainage: no special req.  
gas: no special req.  
steam: no special req.  
other: no special req.  
HVAC: environ. no special req.  
h. special: no special req.  
other:

**Finishes:** floor: carpet/carpet tile  
walls: painted surface  
ceiling: susp. lay-in tile  
special features:

**Typical Elements:**

- qty
- 1 Workstations
  - 1 Filing Cabinets
  - 2 Seating
  - 
  - 
  - 
  - 
  - 
  - 
  - 
  - 
  - 
  - 
  - 
  - 
  - 
  - 
  - 
  -

**Notes:**

## Art Area

**Space Type:** Activity Room

**Description:** Open activity area for play

Open areas with tables and chairs and storage for toys and books

<b>Occupancy:</b> staff positions: 2 children 20 or 25	<b>Elements:</b> qty 1 art sink • child height tables • child height seating for tables • • • • • • • • • • • • • • • •
<p><b>Access:</b> zone: childcare</p> <p>access/security control: card access</p> <p>required connection: as per diagram</p> <p>other:</p>	
<p><b>Shell:</b> critical dimensions: height: 9-10' (2700-3000mm) plan: no special req. doors: no special req.</p> <p>structural loads floor: light (50 psf) suspension req: no special req.</p> <p>acoustics: internal: absorption ac. separation: very low background noise</p> <p>natural light: reqmnt: essential l. control: glare control</p> <p>visual connection reqmnt: access/internal circulation, staff office v. control: no special req.</p> <p>other:</p>	
<p><b>Services:</b> lighting: ambient: moderate/high level (30-55fc)(320-590lux), var lev ctrl l. special: feature area lighting</p> <p>power: distrbtn: perimeter outlets p. special: no special req.</p> <p>communications: tel: no req. c. other: no special req.</p> <p>data: distrbtn: perimeter locations, to carrels d. other: wireless coverage</p> <p>security: no special req.</p> <p>plumbing: water: req. - sink drainage: req. - sink gas: no special req. steam: no special req. other: no special req.</p> <p>HVAC: environ. variable occupant loads h. special: no special req.</p> <p>other:</p>	
<p><b>Finishes:</b> floor: carpet/carpet tile, sheet flooring in kitchenette area</p> <p>walls: painted surface, ceramic tile</p> <p>ceiling: susp. lay-in tile</p> <p>special features: character defining finishes</p>	<b>Notes:</b> Art sink with associated drainage

## Laundry/Janitorial

**Space Type:** Laundry/Janitorial

**Description:** Laundry room and storage for janitorial supplies

<p><b>Occupancy:</b> staff positions: 1 children 0</p> <hr/> <p><b>Access:</b> zone: childcare access/security control: no req. required connection: as per diagram other:</p> <hr/> <p><b>Shell:</b> critical dimensions: height: 9-10' (2700-3000mm) plan: no special req. doors: no special req. structural loads floor: moderate (50 - 100 psf) (2.4 - 4.8 Kpa) suspension req: no special req. acoustics: internal: absorption ac. separation: no special req. natural light: reqmnt: no req. l. control: no special req. visual connection reqmnt: activity area v. control: activity area other:</p> <hr/> <p><b>Services:</b> lighting: ambient: moderate/high level (30-55fc)(320-590lux), var lev ctrl l. special: feature area lighting power: distrbtn: counter height outlets, perimeter outlets p. special: no special req. communications: tel: no req. c. other: no special req. data: distrbtn: no special req. d. other: wireless coverage security: no special req. plumbing: water: req. - sink drainage: req. - sink gas: no special req. steam: no special req. other: no special req. HVAC: environ. variable occupant loads h. special: no special req. other:</p> <hr/> <p><b>Finishes:</b> floor: carpet/carpet tile, sheet flooring in kitchenette area walls: painted surface, ceramic tile ceiling: susp. lay-in tile special features: character defining finishes</p>	<p><b>Elements:</b></p> <p>qty</p> <ul style="list-style-type: none"><li>1 Washing Machine</li><li>1 Dryer</li><li>1 Counter with sink</li><li>.</li><li>.</li><li>.</li><li>.</li><li>.</li><li>.</li><li>.</li><li>.</li><li>.</li><li>.</li><li>.</li><li>.</li><li>.</li><li>.</li><li>.</li><li>.</li><li>.</li><li>.</li><li>.</li></ul> <hr/> <p><b>Notes:</b></p>
--	---

## Office

**Space Type:** Office- enclosed

**Description:** Executive or manager office

<p><b>Typical Occupancy:</b> staff positions: var variable: var</p> <hr/> <p><b>Access:</b> zone: Administration access/security control: as req'd required connection: as per diagram other:</p> <hr/> <p><b>Shell:</b> critical dimensions: height: 9-10' (2700-3000mm) plan: no special req. doors: no special req. structural loads floor: light (50 psf) (2.4 KPa) suspension req: no special req. acoustics: internal: absorption ac. separation: high noise containment natural light: reqmnt: essential l. control: glare control visual connection reqmnt: no special req. v. control: privacy blinds other:</p> <hr/> <p><b>Services:</b> lighting: ambient: moderate/high level (30-55 fc) (320-590 lux) l. special: no special req. power: distrbtn: to each workstation p. special: no special req. communications: tel: to each workstation c. other: no special req. data: distrbtn: to each workstation d. other: wireless coverage security: no special req. plumbing: water: no special req. drainage: no special req. gas: no special req. steam: no special req. other: no special req. HVAC: environ. no special req. h. special: no special req. other:</p> <hr/> <p><b>Finishes:</b> floor: carpet/carpet tile walls: painted surface ceiling: susp. lay-in tile special features:</p>	<p><b>Typical Elements:</b></p> <p>qty</p> <ul style="list-style-type: none"> <li>1 Workstations</li> <li>2 Filing Cabinet</li> <li>1 Small Meeting Table</li> <li>2 Seating</li> <li>•</li> <li>•</li> <li>•</li> <li>•</li> <li>•</li> <li>•</li> <li>•</li> <li>•</li> <li>•</li> <li>•</li> <li>•</li> <li>•</li> <li>•</li> <li>•</li> <li>•</li> </ul> <hr/> <p><b>Notes:</b></p>
---	---

## Open Workstation

**Space Type:** Open Workstation

**Description:** General staff workstation

<b>Typical</b>		<b>Typical Elements:</b>
<b>Occupancy:</b>	<b>staff positions:</b> var <b>variable:</b> var	qty
<b>Access:</b>	<b>zone:</b> Administration <b>access/security control:</b> card access <b>required connection:</b> as per diagram <b>other:</b>	1 Workstations 1 Filing Cabinets 1 Seating .
<b>Shell:</b>	<b>critical dimensions:</b> <i>height:</i> 9-10' (2700-3000mm) <i>plan:</i> no special req. <i>doors:</i> no special req. <b>structural loads</b> <i>floor:</i> light (50 psf) (2.4 KPa) <i>suspension req:</i> no special req. <b>acoustics:</b> <i>internal:</i> absorption <i>ac. separation:</i> high noise containment <b>natural light:</b> <i>reqmnt:</i> essential <i>l. control:</i> glare control <b>visual connection</b> <i>reqmnt:</i> no special req. <i>v. control:</i> privacy blinds <b>other:</b>	
<b>Services:</b>	<b>lighting:</b> <i>ambient:</i> moderate/high level (30-55 fc) (320-590 lux) <i>l. special:</i> no special req. <b>power:</b> <i>distrbtn:</i> to each workstation <i>p. special:</i> no special req. <b>communications:</b> <i>tel:</i> to each workstation <i>c. other:</i> no special req. <b>data:</b> <i>distrbtn:</i> to each workstation <i>d. other:</i> wireless coverage <b>security:</b> no special req. <b>plumbing:</b> <i>water:</i> no special req. <i>drainage:</i> no special req. <i>gas:</i> no special req. <i>steam:</i> no special req. <i>other:</i> no special req. <b>HVAC:</b> <i>environ:</i> no special req. <i>h. special:</i> no special req. <b>other:</b>	
<b>Finishes:</b>	<b>floor:</b> carpet/carpet tile <b>walls:</b> painted surface <b>ceiling:</b> susp. lay-in tile <b>special features:</b>	
		<b>Notes:</b>



## Large Meeting Room

**Space Type:** Large Meeting Room- enclosed

**Description:** An enclosed room with the ability to host large meetings and work teams

Seating, worksurfaces, whiteboard and multimedia/projection services are required

The meeting rooms will be available to administration staff and should be directly accessible from staff offices.

<b>Occupancy:</b>	<b>staff positions:</b> 0 <b>variable:</b> 12	<b>Elements:</b>
<b>Access:</b>	<b>zone:</b> Administration <b>access/security control:</b> card access <b>required connection:</b> as per diagram <b>other:</b>	qty 1 large table 12 chairs 1 projector . . . . .
<b>Shell:</b>	<b>critical dimensions:</b> <i>height:</i> 9-10' (2700-3000mm) <i>plan:</i> no special req. <i>doors:</i> no special req. <b>structural loads</b> <i>floor:</i> light (50 psf) (2.4 KPa) <i>suspension req:</i> no special req. <b>acoustics:</b> <i>internal:</i> no special req. <i>ac. separation:</i> high noise containment <b>natural light:</b> <i>reqmnt:</i> essential <i>l. control:</i> glare control <b>visual connection</b> <i>reqmnt:</i> no special req. <i>v. control:</i> privacy blinds <b>other:</b>	. . . . .
<b>Services:</b>	<b>lighting:</b> <i>ambient:</i> moderate/high level (30-55fc)(320-590lux), var lev c <i>l. special:</i> no special req. <b>power:</b> <i>distrbtn:</i> wall outlets, floor outlet (to centre of table) <i>p. special:</i> no special req. <b>communications:</b> <i>tel:</i> telephone req'd <i>c. other:</i> no special req. <b>data:</b> <i>distrbtn:</i> wall outlets, floor outlet (to centre of table) <i>d. other:</i> wireless coverage, display media connection <b>security:</b> no special req. <b>plumbing:</b> <i>water:</i> no special req. <i>drainage:</i> no special req. <i>gas:</i> no special req. <i>steam:</i> no special req. <i>other:</i> no special req. <b>HVAC:</b> <i>environ:</i> high/variable occupant loads <i>h. special:</i> no special req. <b>other:</b>	. . . . .
<b>Finishes:</b>	<b>floor:</b> carpet/carpet tile <b>walls:</b> painted surface <b>ceiling:</b> susp. lay-in tile <b>special features:</b> feature wall area for media installation projection	<b>Notes:</b>

## Small Meeting Room

**Space Type:** Meeting Room- enclosed

**Description:** An enclosed room with the ability to host small meetings and work teams

Seating, worksurfaces, and whiteboard are required

The meeting rooms will be available to administration staff and should be directly accessible from staff offices.

**Occupancy:** staff positions: 0  
variable: 8

**Access:** zone: Administration

access/security control: card access

required connection: as per diagram

other:

**Shell:** critical dimensions: height: 9-10' (2700-3000mm)

plan: no special req.

doors: no special req.

structural loads floor: light (50 psf) (2.4 KPa)

suspension req: no special req.

acoustics: internal: no special req.

ac. separation: high noise containment

natural light: reqmnt: essential

l. control: glare control

visual connection reqmnt: no special req.

v. control: privacy blinds

other:

**Services:** lighting: ambient: moderate/high level (30-55fc)(320-590lux), var lev c  
l. special: no special req.

power: distrbtn: wall outlets, floor outlet (to centre of table)

p. special: no special req.

communications: tel: telephone req'd

c. other: no special req.

data: distrbtn: wall outlets, floor outlet (to centre of table)

d. other: wireless coverage, display media connection

security: no special req.

plumbing: water: no special req.

drainage: no special req.

gas: no special req.

steam: no special req.

other: no special req.

HVAC: environ. high/variable occupant loads

h. special: no special req.

other:

**Finishes:** floor: carpet/carpet tile

walls: painted surface

ceiling: susp. lay-in tile

special features: no special req.

**Elements:**

qty

1 large table

8 chairs

1 projector

.

.

.

.

.

.

.

.

.

.

.

.

.

.

.

.

.

.

.

.

.

**Notes:**

## Staff Room/Kitchen

**Space Type:** Staff room and kitchen

**Description:** Comfortable lounge space to support active social drop-in use.

Comfortable, informal space with soft-seating, table-seating, a kitchenette and storage space.

Should be centrally located within component

<p><b>Occupancy:</b> staff positions: 0 variable: 8</p>	<p><b>Elements:</b></p> <p>qty</p>
<p><b>Access:</b> zone: Administration access/security control: card access required connection: as per diagram other:</p>	<p>1 counter space w sink 1 microwave oven 2 soft seating 6 table seating 1 tables 1 Refrigerator .</p>
<p><b>Shell:</b> critical dimensions: height: 9-10' (2700-3000mm) plan: no special req. doors: no special req. structural loads floor: light (50 psf) (2.4 KPa) suspension req: no special req. acoustics: internal: absorption ac. separation: very low background noise natural light: reqmnt: essential l. control: glare control visual connection reqmnt: no special req. v. control: no special req. other:</p>	<p>.</p> <p>.</p> <p>.</p> <p>.</p> <p>.</p> <p>.</p> <p>.</p> <p>.</p> <p>.</p> <p>.</p>
<p><b>Services:</b> lighting: ambient: moderate/high level (30-55fc)(320-590lux), var lev d l. special: feature area lighting power: distrbtn: counter height outlets, perimeter outlets p. special: no special req. communications: tel: no req. c. other: no special req. data: distrbtn: perimeter locations d. other: wireless coverage security: no special req. plumbing: water: req. - sink drainage: req. - sink gas: no special req. steam: no special req. other: no special req. HVAC: environ. variable occupant loads h. special: no special req. other:</p>	<p>.</p> <p>.</p> <p>.</p> <p>.</p> <p>.</p> <p>.</p> <p>.</p> <p>.</p> <p>.</p> <p>.</p> <p>.</p> <p>.</p> <p>.</p>
<p><b>Finishes:</b> floor: carpet/carpet tile, sheet flooring in kitchenette area walls: painted surface, ceramic tile ceiling: susp. lay-in tile special features: character defining finishes</p>	<p><b>Notes:</b></p>

## Reception/Service Counter

**Space Type:** office-open

**Description:** A visible front to public domain, but also a buffer from general activities of building  
Noise mitigation is needed between reception/service counter and offices behind.

Occupancy:	Elements:
<b>staff positions:</b> 1 <b>variable:</b> 0	qty
<b>Access:</b> <b>zone:</b> Administration	1 information displays
<b>access/security control:</b> card access	1 counter/workstation
<b>required connection:</b> as per diagram	•
<b>other:</b> after hours security screen	•
<b>Shell: critical dimensions:</b> <i>height:</i> 9-10' (2700-3000mm)	•
<i>plan:</i> no special req.	•
<i>doors:</i> no special req.	•
<b>structural loads</b> <i>floor:</i> light (50 psf) (2.4 KPa)	•
<i>suspension req:</i> no special req.	•
<b>acoustics:</b> <i>internal:</i> no special req.	•
<i>ac. separation:</i> very low background noise	•
<b>natural light:</b> <i>reqmnt:</i> essential	•
<i>l. control:</i> glare control	•
<b>visual connection</b> <i>reqmnt:</i> living room and access/internal circulation, Gen. Bld	•
<i>v. control:</i> no special req.	•
<b>other:</b>	•
<b>Services:</b> <b>lighting:</b> <i>ambient:</i> moderate/high level (30-55fc)(320-590lux)	•
<i>l. special:</i> no special req.	•
<b>power:</b> <i>distrbtn:</i> outlets to staff counter	•
<i>p. special:</i> no special req.	•
<b>communications:</b> <i>tel:</i> req. - to counter	•
<i>c. other:</i> no special req.	•
<b>data:</b> <i>distrbtn:</i> to counter	•
<i>d. other:</i> wireless coverage	•
<b>security:</b> panic button and security monitors	•
<b>plumbing:</b> <i>water:</i> no special req.	•
<i>drainage:</i> no special req.	•
<i>gas:</i> no special req.	•
<i>steam:</i> no special req.	•
<i>other:</i> no special req.	•
<b>HVAC:</b> <i>environ.</i> no special req.	•
<i>h. special:</i> no special req.	•
<b>other:</b>	•
<b>Finishes:</b> <b>floor:</b> carpet/carpet tile	•
<b>walls:</b> painted surface	•
<b>ceiling:</b> susp. lay-in tile	•
<b>special features:</b>	•
	<b>Notes:</b>

## General Storage

**Space Type:** Storage room for admin and program supplies

**Description:** Flexible shelving for storage

<b>Occupancy:</b> staff positions: 0 variable: 0	<b>Elements:</b> qty • modular shelving •
<b>Access:</b> zone: Administration access/security control: key lock control required connection: as per diagram other:	
<b>Shell:</b> critical dimensions: height: 9-10' (2700-3000mm) plan: no special req. doors: no special req. structural loads floor: light (50 psf) (2.4 KPa) suspension req: no special req. acoustics: internal: no special req. ac. separation: no special req. natural light: reqmnt: no req. l. control: glare control visual connection reqmnt: no special req. v. control: no special req. other:	<b>Notes:</b>
<b>Services:</b> lighting: ambient: moderate/high level (30-55fc)(320-590lux), var lev d l. special: no special req. power: distrbtn: code req. adequate p. special: no special req. communications: tel: no req. c. other: no special req. data: distrbtn: no req. d. other: no special req. security: no special req. plumbing: water: no special req. drainage: no special req. gas: no special req. steam: no special req. other: no special req. HVAC: environ. no special req. h. special: no special req. other:	
<b>Finishes:</b> floor: sheet flooring or vinyl walls: painted surface ceiling: susp. lay-in tile special features:	



### Edible Canada Work Area

**Space Type:** Open work room

**Description:** Open workspace for cleaning and packing food from harvest  
Comfortable, informal space with soft-seating, table-seating, a kitchenette and storage space.

<b>Occupancy:</b>	<b>staff positions:</b> 0 <b>variable:</b> 8	<b>Elements:</b>	qty
<b>Access:</b>	<b>zone:</b> Administration <b>access/security control:</b> card access <b>required connection:</b> as per diagram <b>other:</b>		1 counter space w sink 1 large work table 4 stools for seating . . . . . . . . . . . . . . . . . .
<b>Shell:</b>	<b>critical dimensions:</b> <i>height:</i> 9-10' (2700-3000mm) <i>plan:</i> no special req. <i>doors:</i> no special req. <b>structural loads</b> <i>floor:</i> light (50 psf) (2.4 KPa) <i>suspension req:</i> no special req. <b>acoustics:</b> <i>internal:</i> absorption <i>ac. separation:</i> low background noise <b>natural light:</b> <i>reqmnt:</i> optional <i>l. control:</i> glare control <b>visual connection</b> <i>reqmnt:</i> no special req. <i>v. control:</i> no special req. <b>other:</b>		
<b>Services:</b>	<b>lighting:</b> <i>ambient:</i> moderate/high level (30-55fc)(320-590lux), var lev c <i>l. special:</i> feature area lighting <b>power:</b> <i>distrbtn:</i> counter height outlets, perimeter outlets <i>p. special:</i> no special req. <b>communications:</b> <i>tel:</i> no req. <i>c. other:</i> no special req. <b>data:</b> <i>distrbtn:</i> perimeter locations <i>d. other:</i> wireless coverage <b>security:</b> no special req. <b>plumbing:</b> <i>water:</i> req. - sink <i>drainage:</i> req. - sink <i>gas:</i> no special req. <i>steam:</i> no special req. <i>other:</i> no special req. <b>HVAC:</b> <i>environ.</i> variable occupant loads <i>h. special:</i> no special req. <b>other:</b>		
<b>Finishes:</b>	<b>floor:</b> sheet flooring or vinyl <b>walls:</b> painted surface, ceramic tile <b>ceiling:</b> susp. lay-in tile <b>special features:</b>		
		<b>Notes:</b>	

## Edible Canada Food Storage

**Space Type:** Food Storage

**Description:** Flexible shelving for storage of non-perishable foods  
Refrigerator for perishable food

<p><b>Occupancy:</b> staff positions: 0 variable: 0</p>	<p><b>Elements:</b> qty 1 modular shelving 1 Refrigerator .</p>
<p><b>Access:</b> zone: Administration access/security control: card access required connection: as per diagram other:</p>	
<p><b>Shell:</b> critical dimensions: height: 9-10' (2700-3000mm) plan: no special req. doors: no special req. structural loads floor: light (50 psf) (2.4 KPa) suspension req: no special req. acoustics: internal: absorption ac. separation: no special req. natural light: reqmnt: essential l. control: glare control visual connection reqmnt: access/internal circulation, Reception/Transition v. control: no special req. other:</p>	
<p><b>Services:</b> lighting: ambient: moderate/high level (30-55fc)(320-590lux), var lev c l. special: feature area lighting power: distrbtn: counter height outlets, perimeter outlets p. special: no special req. communications: tel: no req. c. other: no special req. data: distrbtn: perimeter locations d. other: wireless coverage security: no special req. plumbing: water: req. - sink drainage: req. - sink gas: no special req. steam: no special req. other: no special req. HVAC: environ. variable occupant loads h. special: no special req. other:</p>	
<p><b>Finishes:</b> floor: sheet flooring walls: painted surface, ceramic tile ceiling: susp. lay-in tile special features:</p>	

**Notes:**



# North Shore Neighbourhood House Functional Program

## Study Purpose

To assess the feasibility of accommodating current and anticipated programs within the existing facilities and to prepare estimates of facility and functional requirements that can be used to explore accommodation options.

- ## Study Process
- Study Initiated - September, 2015
  - Tour of similar neighbourhood houses
    - Kilsitano Neighbourhood House
    - Kiwassa Neighbourhood House.
  - Tour of existing North Shore Neighbourhood House
  - Background information gathered & analyzed

- ## Key Terms
- **Functional Program**  
A description of the spatial and functional requirements for facilities to accommodate intended activities and services
  - **Assigned Area**  
Space used to directly support functions
  - **Building Gross Area**  
Includes the Assigned Area plus a gross-up factor to account for major circulation, washrooms, mechanical, and custodial support spaces
  - **Spatial Relationship Diagram**  
Shows the relative size and proximity of spaces in the building, as well as their relationship to the major circulation system and proximity to entrances

## Area Requirements Overview

Base Scenario

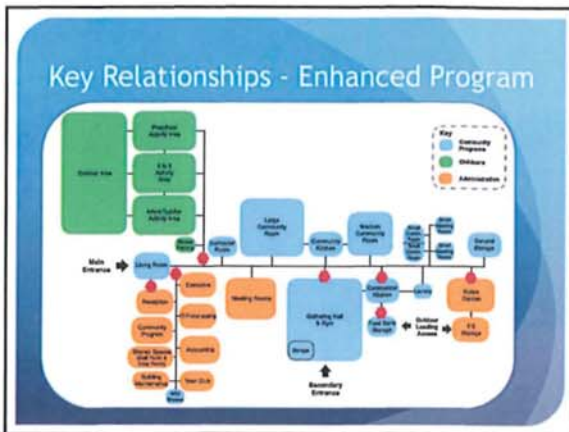
Component	Net Assignable Area (sq ft)
1 Community Programs	6,433
2 Childcare	6,433
3 Administration	4,621
<b>Total Net Assignable</b>	<b>17,487</b>
<b>Building Envelopes &amp; Major Circulation (grossing factor of 2.0)</b>	<b>34,974</b>
<b>TOTAL BUILDING GROSS AREA</b>	<b>52,458</b>
Children's Outdoor Area	4,200

Existing Building Gross Area: 18,055 sq ft.

Enhanced Scenario

Component	Net Assignable Area (sq ft)
1 Community Programs	11,478
2 Childcare	9,667
3 Administration	4,300
<b>Total Net Assignable</b>	<b>25,445</b>
<b>Building Envelopes &amp; Major Circulation (grossing factor of 2.0)</b>	<b>50,890</b>
<b>TOTAL BUILDING GROSS AREA</b>	<b>76,335</b>
Children's Outdoor Area	4,612

- ## Facility Challenges
- No Room for Growth
  - Competition for Meeting Rooms
  - Insufficient Circulation
  - Childcare outdated
  - Facility due for Replacement



### Community Programs- Enhanced

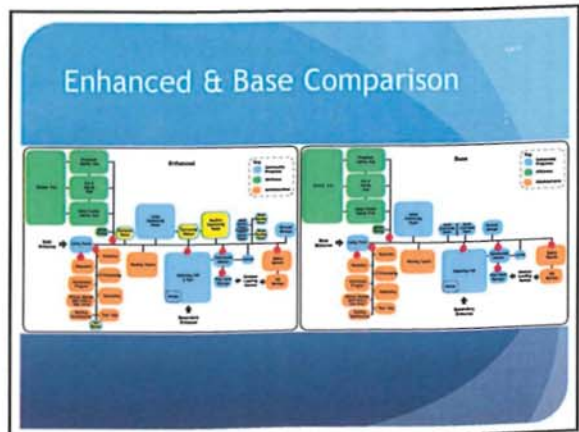
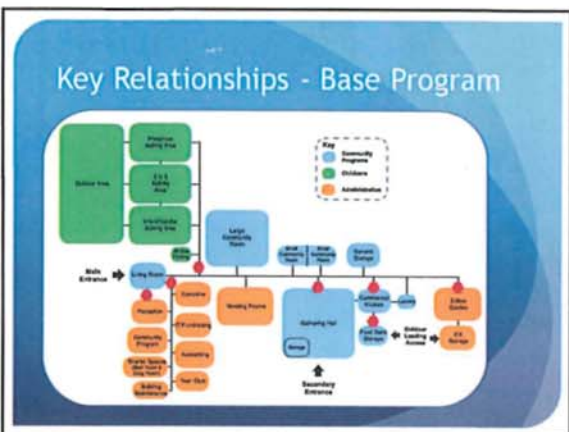
Community Programs	Number	Space Net Area (m <sup>2</sup> )	Space Net Area (sq ft)	Net Area (m <sup>2</sup> )	Net Area (sq ft)	Notes
2.1 Living Room and waiting area	1	300	324	300	324	
2.2 Garment rack & Sun	1	3,002	324	3,002	324	Capacity of 200
2.3 Garment rack Storage	1	375	35	375	35	
2.4 Bathrooms x 6 Shower	1	25	7	25	7	1 x 2 Shower stall for staff use
2.5 Large Community Room	1	1700	184	1,700	184	Capacity 50
2.6 Medium Community Room	1	800	79	800	79	Capacity 25
2.7 Small Community Rooms	2	120	11.0	240	22.0	Adapted with wheelchair use
2.8 Small Meeting Room	1	120	11.0	240	22.0	Capacity 9 to 1
2.9 Community Room Storage	4	50	4.7	200	18.8	
3.02 Community Kitchen	1	250	23.2	250	23.2	
3.03 Commercial Kitchen	1	950	91	950	91	
3.04 Family Community Kitchen	1	50	5	50	5	Serves Community Kitchen
3.04 Food Bank Storage	1	300	28	300	28	Serves Commercial Kitchen
3.05 Computer Room	1	250	23	250	23	200 computer workstations
3.06 General Storage	1	500	46.5	500	46.5	program supplies
3.07 Laundry	1	300	28.4	300	28.4	Adapted to Commercial Kitchen
<b>Subtotal Net Area (m<sup>2</sup>)</b>				<b>8,800</b>		
<b>Subtotal Circulation (m<sup>2</sup>)</b>				<b>2,668.00</b>		
<b>Total Net Available Area (m<sup>2</sup>)</b>				<b>11,474.00</b>		

### Childcare- Enhanced

Childcare- 57 Spaces	Space Net Area (m <sup>2</sup> )	Space Net Area (sq ft)	Notes
2.1 Net Activity Area	82	884	
Infant/Toddler 22 spaces	128	1378	Includes Activity Room, Reading and Storage, and Quiet Room
Preschool 22 spaces	78	843	
2.2 Net Support Spaces	65.5	651	Includes Offices, Kitchen, Storage, Parents' Room, Staff Office, Washrooms, and Laundry
Infant/Toddler 22 spaces	71.3	767	
Preschool 22 spaces	123	1,321	
2.3 Structured Parking	38	350	
<b>Net Indoor Area</b>	<b>6,893</b>		
<b>Circulation (m<sup>2</sup>)</b>	<b>814</b>		
<b>Total Indoor Available Area (m<sup>2</sup>)</b>	<b>7,707</b>		
2.4 Covered Outdoor Space	28	302	
Infant/Toddler 22 spaces	43	454	
Preschool 22 spaces	38	405	
2.5 Open Outdoor Space	370	3976	
Infant/Toddler 22 spaces	305	3249	
Preschool 22 spaces	107	1132	
<b>Net Outdoor Area</b>	<b>6,851</b>		
<b>Total Childcare (Indoor and Outdoor)</b>	<b>14,558</b>		

### Administration- Enhanced

Administration	Space Net Area (m <sup>2</sup> )	Space Net Area (sq ft)	Notes
2.1 Reception	10	107	
2.2 Reception	10	107	
2.3 Community Program	10	107	
2.4 Reception	10	107	
2.5 Reception	10	107	
2.6 Reception	10	107	
2.7 Reception	10	107	
2.8 Reception	10	107	
2.9 Reception	10	107	
2.10 Reception	10	107	
2.11 Reception	10	107	
2.12 Reception	10	107	
2.13 Reception	10	107	
2.14 Reception	10	107	
2.15 Reception	10	107	
2.16 Reception	10	107	
2.17 Reception	10	107	
2.18 Reception	10	107	
2.19 Reception	10	107	
2.20 Reception	10	107	
2.21 Reception	10	107	
2.22 Reception	10	107	
2.23 Reception	10	107	
2.24 Reception	10	107	
2.25 Reception	10	107	
2.26 Reception	10	107	
2.27 Reception	10	107	
2.28 Reception	10	107	
2.29 Reception	10	107	
2.30 Reception	10	107	
2.31 Reception	10	107	
2.32 Reception	10	107	
2.33 Reception	10	107	
2.34 Reception	10	107	
2.35 Reception	10	107	
2.36 Reception	10	107	
2.37 Reception	10	107	
2.38 Reception	10	107	
2.39 Reception	10	107	
2.40 Reception	10	107	
2.41 Reception	10	107	
2.42 Reception	10	107	
2.43 Reception	10	107	
2.44 Reception	10	107	
2.45 Reception	10	107	
2.46 Reception	10	107	
2.47 Reception	10	107	
2.48 Reception	10	107	
2.49 Reception	10	107	
2.50 Reception	10	107	
2.51 Reception	10	107	
2.52 Reception	10	107	
2.53 Reception	10	107	
2.54 Reception	10	107	
2.55 Reception	10	107	
2.56 Reception	10	107	
2.57 Reception	10	107	
2.58 Reception	10	107	
2.59 Reception	10	107	
2.60 Reception	10	107	
2.61 Reception	10	107	
2.62 Reception	10	107	
2.63 Reception	10	107	
2.64 Reception	10	107	
2.65 Reception	10	107	
2.66 Reception	10	107	
2.67 Reception	10	107	
2.68 Reception	10	107	
2.69 Reception	10	107	
2.70 Reception	10	107	
2.71 Reception	10	107	
2.72 Reception	10	107	
2.73 Reception	10	107	
2.74 Reception	10	107	
2.75 Reception	10	107	
2.76 Reception	10	107	
2.77 Reception	10	107	
2.78 Reception	10	107	
2.79 Reception	10	107	
2.80 Reception	10	107	
2.81 Reception	10	107	
2.82 Reception	10	107	
2.83 Reception	10	107	
2.84 Reception	10	107	
2.85 Reception	10	107	
2.86 Reception	10	107	
2.87 Reception	10	107	
2.88 Reception	10	107	
2.89 Reception	10	107	
2.90 Reception	10	107	
2.91 Reception	10	107	
2.92 Reception	10	107	
2.93 Reception	10	107	
2.94 Reception	10	107	
2.95 Reception	10	107	
2.96 Reception	10	107	
2.97 Reception	10	107	
2.98 Reception	10	107	
2.99 Reception	10	107	
2.100 Reception	10	107	



### Community Programs- Base

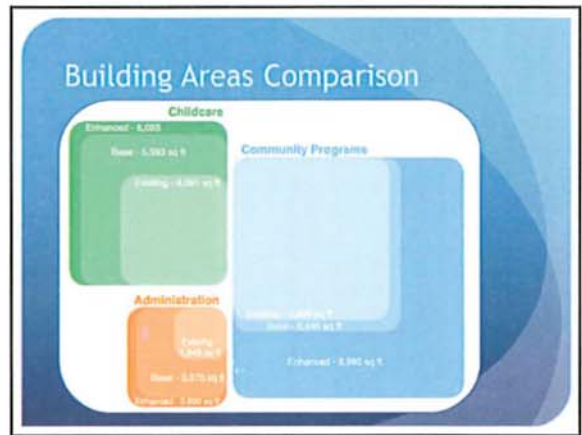
Community Programs	Number Spaces	Space Net Area (sq ft)	Space Net Area (sq ft)	Net Area (sq ft)	Notes
1.1 Living Room (existing area)	1	302	24	307	
1.2 Gathering Hall	1	2200	204	2200	Capacity of 550
1.3 Large Community Room	1	375	35	375	
1.4 Large Community Room	1	3706	156	3706	Capacity 50
1.5 Small Community Rooms	2	120	15.15	243	Adjacent with retractable wall
1.6 Community Room Storage	4	50	4.7	200	
1.7 Commercial Kitchen	1	100	11	100	
1.8 Food Bank Storage	1	300	28	300	Serves Commercial Kitchen
1.9 General Storage	1	100	46.5	500	Includes both equipment and program supplies
1.11 Laundry	1	100	9.8	100	Adjacent to Commercial Kitchen
<b>Subtotal Net Area (sq ft)</b>				<b>6,465</b>	
Subtotal Circulation (sq ft)				1,619.5	
<b>Total Net Assignable Area (sq ft)</b>				<b>8,084.5</b>	

### Childcare- Base

Childcare-37 Spaces	Space Net Area (sq ft)	Net Area (sq ft)	Notes
2.1 Net Activity Area			
Infant/Toddler- 22 spaces	70	550	Includes Activity Room, Nap Room and Storage, and Quiet Room
3 to 5- 25 Spaces	115	1238	
Preschool- 20 Spaces	75.5	818	
2.2 Net Support Spaces			
Infant/Toddler- 22 spaces	30	538	Includes Cubbies, Kitchen, Storage, Parent's Room, Staff Office, Bathrooms, and Laundry
3 to 5- 25 Spaces	71.3	787	
Preschool- 20 Spaces	115.5	1,234	
2.3 Stroller Parking	23	250	
<b>Net Indoor Area</b>		<b>6,590</b>	
Construction (sq ft)		<b>639</b>	
<b>Total Indoor Assignable Area (sq ft)</b>		<b>7,229</b>	
2.4 Covered Outdoor Space			
Infant/Toddler- 22 spaces	16	198	
3 to 5- 25 Spaces	25	260	
Preschool- 20 Spaces	33	350	
2.5 Open Outdoor Space			
Infant/Toddler- 22 spaces	66	730	
3 to 5- 25 Spaces	150	1615	
Preschool- 20 Spaces	207	2152	
<b>Net Outdoor Area</b>		<b>4,255</b>	
<b>Total Childcare (Indoor and Outdoor)</b>		<b>10,727</b>	

### Administration- Base

Administration	Sub	Number Spaces	Space Net Area (sq ft)	Space Net Area (sq ft)	Net Area (sq ft)	Notes
1.1 Executive Office	1	1	200	17	200	
1.2 Reception	1	1	200	20	200	Includes 2 workstations
1.3 Community Program	1	1	100	10	100	10 shared
1.4 Accounting	1	1	100	10	100	10 shared
1.5 Human Resources	1	1	100	10	100	10 shared
1.6 Training	1	1	100	10	100	10 shared
1.7 IT/Printing	1	1	100	10	100	10 shared
1.8 Meeting Rooms	1	1	100	10	100	10 shared
1.9 Storage	1	1	100	10	100	10 shared
1.10 Other	1	1	100	10	100	10 shared
<b>Subtotal Net Area (sq ft)</b>				<b>1,000</b>		
Subtotal Circulation (sq ft)				1,000		
<b>Total Net Assignable Area (sq ft)</b>				<b>2,000</b>		



### Comparison Table

	Existing Facility Area (sq ft)	Base Program Area (sq ft)	Enhanced Program Area (sq ft)
Community Spaces	5,986	6,465	8,980
Childcare Spaces	4,091	5,593	8,093
Admin Spaces	1,949	1,370	3,660
<b>Net Assignable Area*</b>	<b>12,025</b>	<b>15,428</b>	<b>18,763</b>
<b>Building Gross Area</b>	<b>18,055</b>	<b>24,520</b>	<b>29,966</b>

- ### Observations
- Existing facility inadequate
  - Little room for growth in Base Scenario
  - Enhanced Scenario increases Community Programs capacity
  - Next Steps- Explore development options and conduct detailed planning