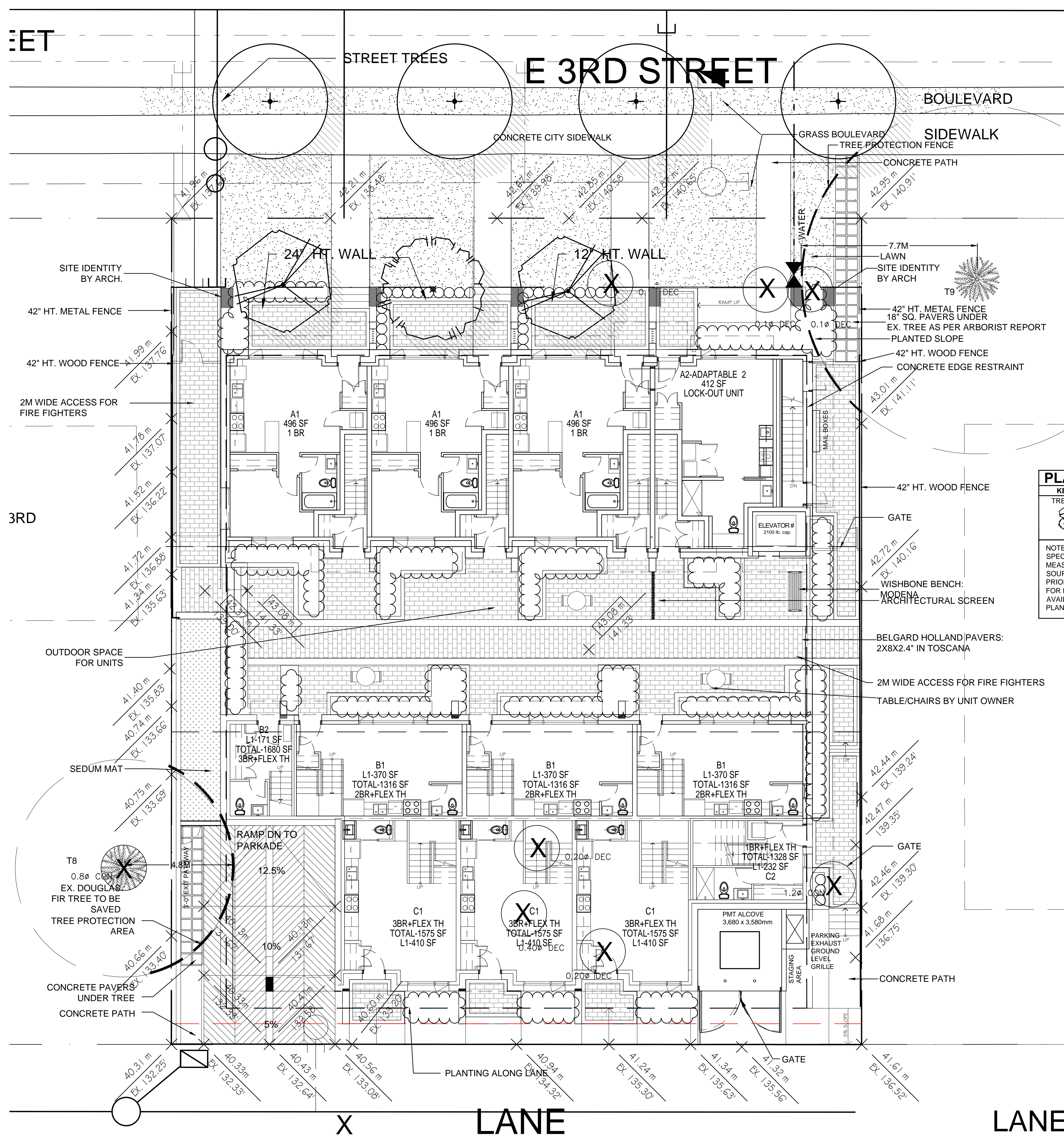


SEAL:



PLANT SCHEDULE				PMG PROJECT NUMBER: 20-062
KEY	QTY	BOTANICAL NAME	COMMON NAME	PLANTED SIZE / REMARKS
TREE	2 *	ACER GRISEUM	PAPERBARK MAPLE	6CM CAL; 1.8M STD; B&B
	1 *	CORNUS MAS	CORNELIAN CHERRY	5CM CAL; 1.8M HT;

NOTES: * PLANT SIZES IN THIS LIST ARE SPECIFIED ACCORDING TO THE BC LANDSCAPE STANDARD AND CANADIAN LANDSCAPE STANDARD, LATEST EDITION. CONTAINER SIZES SPECIFIED AS PER CNLA STANDARD. BOTH PLANT SIZE AND CONTAINER SIZE ARE THE MINIMUM ACCEPTABLE SIZES. * REFER TO SPECIFICATIONS FOR DEFINED CONTAINER MEASUREMENTS AND OTHER PLANT MATERIAL REQUIREMENTS. * SEARCH AND REVIEW: MAKE PLANT MATERIAL AVAILABLE FOR OPTIONAL REVIEW BY LANDSCAPE ARCHITECT AT SOURCE OF SUPPLY. AREA OF SEARCH TO INCLUDE LOWER MAINLAND AND FRASER VALLEY. * SUBSTITUTIONS: OBTAIN WRITTEN APPROVAL FROM THE LANDSCAPE ARCHITECT PRIOR TO MAKING ANY SUBSTITUTIONS TO THE SPECIFIED MATERIAL. UNAPPROVED SUBSTITUTIONS WILL BE REJECTED. ALLOW A MINIMUM OF FIVE DAYS PRIOR TO DELIVERY FOR REQUEST TO SUBSTITUTE. SUBSTITUTIONS ARE SUBJECT TO BC LANDSCAPE STANDARD AND CANADIAN LANDSCAPE STANDARD - DEFINITION OF CONDITIONS OF AVAILABILITY. ALL LANDSCAPE MATERIAL AND WORKMANSHIP MUST MEET OR EXCEED BC LANDSCAPE STANDARD AND CANADIAN LANDSCAPE STANDARD LATEST EDITION. ALL PLANT MATERIAL MUST BE PROVIDED FROM CERTIFIED DISEASE FREE NURSERY.

NO.	DATE	REVISION DESCRIPTION	DR.
5	21-MAY-04	NEW SITE PLAN/MUN. COMMENTS	MM
4	21-MAR-06	NEW SITE PLAN/MUN. COMMENTS	MM
3	21-FEB-24	NEW SITE PLAN/MUN. COMMENTS	MM
2	21-FEB-16	NEW SITE PLAN	MM
1	20-NOV-18	ADDED PLANTING	MM

CLIENT:

PROJECT:

MULTI FAMILY DEVELOPMENT

427-435 EAST 3RD ST.
CITY OF NORTH VANCOUVER

DRAWING TITLE:

GROUND FLOOR LANDSCAPE PLAN

DATE: 20.MAY.20 DRAWING NUMBER:
SCALE: 1/8"=1'-0"
DRAWN: MM
DESIGN: MM
CHK'D:

L1

OF 4



SEAL:

NO.	DATE	REVISION DESCRIPTION	DR.
5	21-MAY-04	NEW SITE PLAN/MUN. COMMENTS	MM
4	21-MAR-06	NEW SITE PLAN/MUN. COMMENTS	MM
3	21-FEB-24	NEW SITE PLAN/MUN. COMMENTS	MM
2	21-FEB-16	NEW SITE PLAN	MM
1	20-NOV-18	ADDED PLANTING	MM

CLIENT:

PROJECT:

MULTI FAMILY DEVELOPMENT

427-435 EAST 3RD ST.
CITY OF NORTH VANCOUVER

DRAWING TITLE:

GROUND FLOOR SHRUB PLAN

DATE: 20.MAY.20 DRAWING NUMBER:
SCALE: 1/8"=1'-0"
DRAWN:
DESIGN:
CHK'D: PCM OF 4

PLANT SCHEDULE				PMG PROJECT NUMBER: 20-062
KEY	QTY	BOTANICAL NAME	COMMON NAME	PLANTED SIZE / REMARKS
SHRUB				
B	33	BUXUS MICROPHYLLA 'WINTER GEM'	LITTLE-LEAF BOX	#3 POT; 40CM
HB	6 *	HYDRANGEA MACROPHYLLA 'PIA'	DWARF BIGLEAF HYDRANGEA; PINK	#3 POT; 40CM
HQ	2 *	HYDRANGEA PANICULATA 'QUICK FIRE'	QUICK FIRE HYDRANGEA	#3 POT; 80CM
N	4 *	NANDINA DOMESTICA	HEAVENLY BAMBOO	#3 POT; 50CM
PS	1 *	PHILADELPHUS 'MINNESOTA SNOWFLAKE'	PURE MOCK ORANGE	#3 POT; 60CM
R	1 *	RHODODENDRON 'BOW BELLS'	RHODODENDRON; PINK	#3 POT; 30CM
SK	24 *	SKIMMIA JAPONICA (10% MALE)	JAPANESE SKIMMIA	#3 POT; 45CM
TX	41 *	TAXUS X MEDIA 'HICKSI'	HICK'S YEW	1.2M B&B
VD	3	VIBURNUM DAVIDI	DAVID'S VIBURNUM	#3 POT; 50CM
GRASS				
HA	78	HAKONECHLOA MACRA 'AUREOLA'	GOLD VARIEGATED JAPANESE FOREST GRASS	#1 POT
PO	15 *	PENNISETUM ORIENTALE	ORIENTAL FOUNTAIN GRASS	#1 POT
PERENNIAL				
HE	24 *	HELLEBORUS x HYBRIDUS	LENTEN ROSE; COLOUR MIX	15CM POT
GC	1	POLYSTICHUM MUNITUM	WESTERN SWORD FERN	#1 POT; 25CM
PM		172 sq. ft.	SEDUM MATS	

NOTES: * PLANT SIZES IN THIS LIST ARE SPECIFIED ACCORDING TO THE BC LANDSCAPE STANDARD AND CANADIAN LANDSCAPE STANDARD, LATEST EDITION. CONTAINER SIZES SPECIFIED AS PER CNLA STANDARD. BOTH PLANT SIZE AND CONTAINER SIZE ARE THE MINIMUM ACCEPTABLE SIZES. * REFER TO SPECIFICATIONS FOR DEFINED CONTAINER MEASUREMENTS AND OTHER PLANT MATERIAL REQUIREMENTS. * SEARCH AND REVIEW: MAKE PLANT MATERIAL AVAILABLE FOR OPTIONAL REVIEW BY LANDSCAPE ARCHITECT AT SOURCE OF SUPPLY. AREA OF SEARCH TO INCLUDE LOWER MAINLAND AND FRASER VALLEY. * SUBSTITUTIONS: OBTAIN WRITTEN APPROVAL FROM THE LANDSCAPE ARCHITECT PRIOR TO MAKING ANY SUBSTITUTIONS TO THE SPECIFIED MATERIAL. UNAPPROVED SUBSTITUTIONS WILL BE REJECTED. ALLOW A MINIMUM OF FIVE DAYS PRIOR TO DELIVERY FOR REQUEST TO SUBSTITUTE. SUBSTITUTIONS ARE SUBJECT TO BC LANDSCAPE STANDARD AND CANADIAN LANDSCAPE STANDARD - DEFINITION OF CONDITIONS OF AVAILABILITY. ALL LANDSCAPE MATERIAL AND WORKMANSHIP MUST MEET OR EXCEED BC LANDSCAPE STANDARD AND CANADIAN LANDSCAPE STANDARD LATEST EDITION. ALL PLANT MATERIAL MUST BE PROVIDED FROM CERTIFIED DISEASE FREE NURSERY

* BIRD & BEE FRIENDLY PLANTS

