

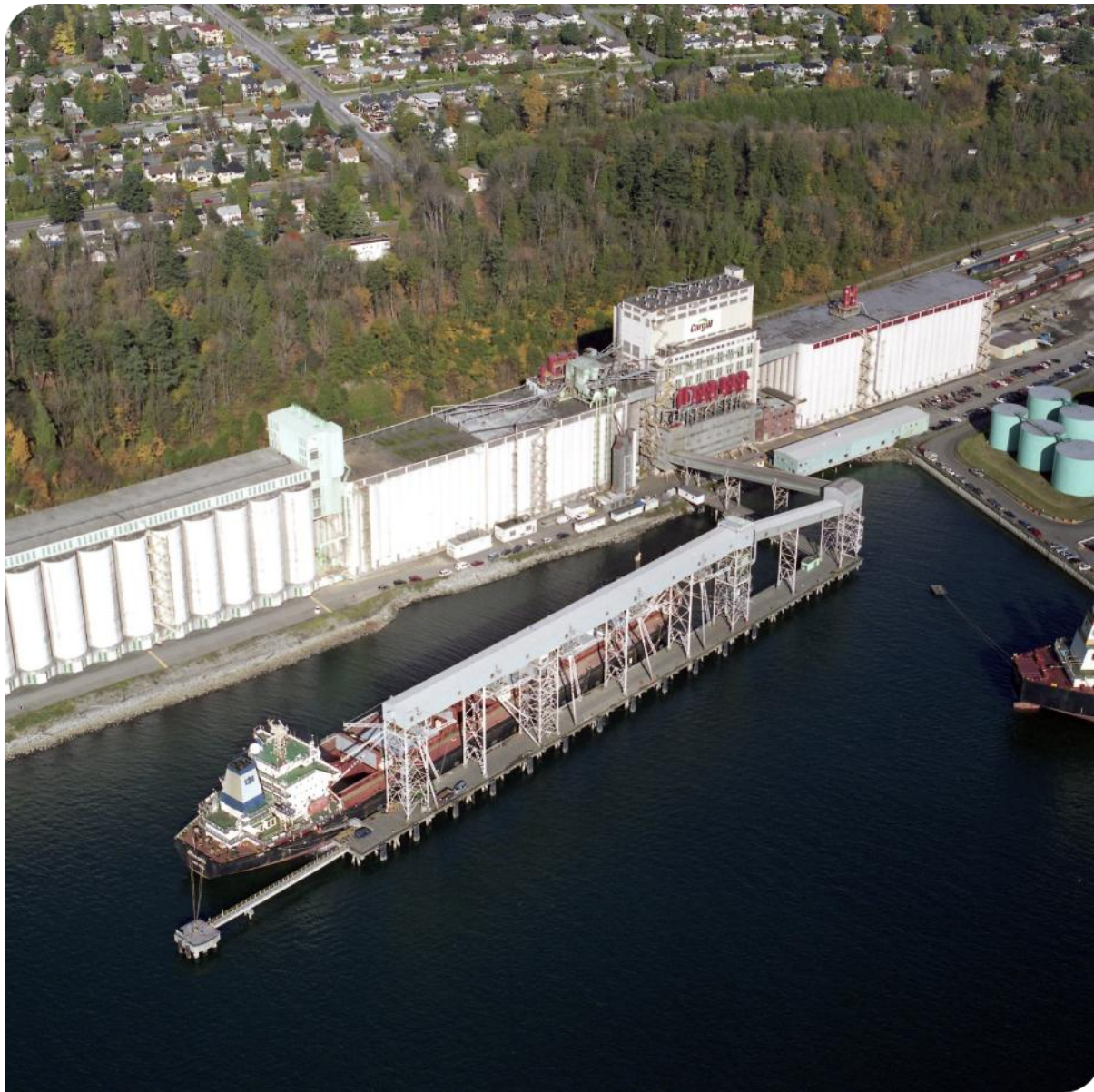


Low Level Road and Port Area Community Liaison Committee

Vancouver Rail Expansion



February 18, 2015



Terminal Overview

The Vancouver Terminal was built in 1968 by Saskatchewan Wheat Pool and purchased by Cargill in 2007.

Total storage capacity is 210,000 Tonnes with a load out capacity of 2200 T/hour.

Products handled: wheat, barley, canola and peas.

Project Background:

Completing this project will improve the terminal's rail car unloading efficiency allowing the terminal to increase annual volume from 3.4 to 5 million MT of grain and oilseeds. The project will also allow the railroad to service the facility more efficiently.

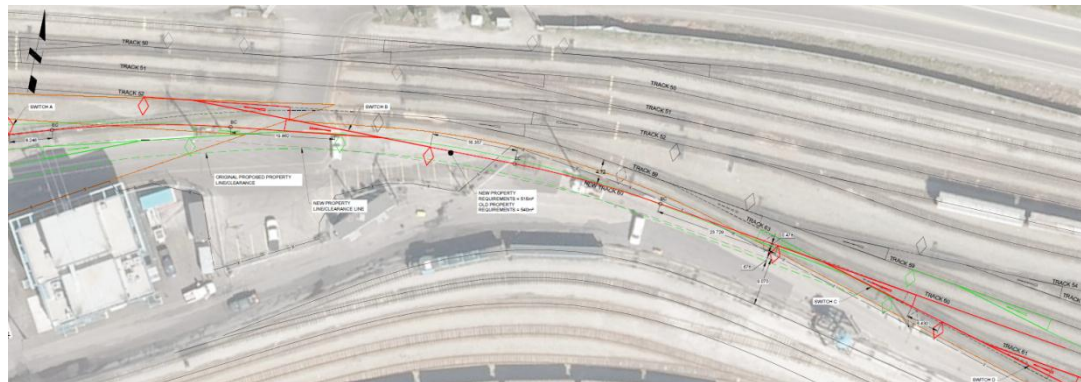
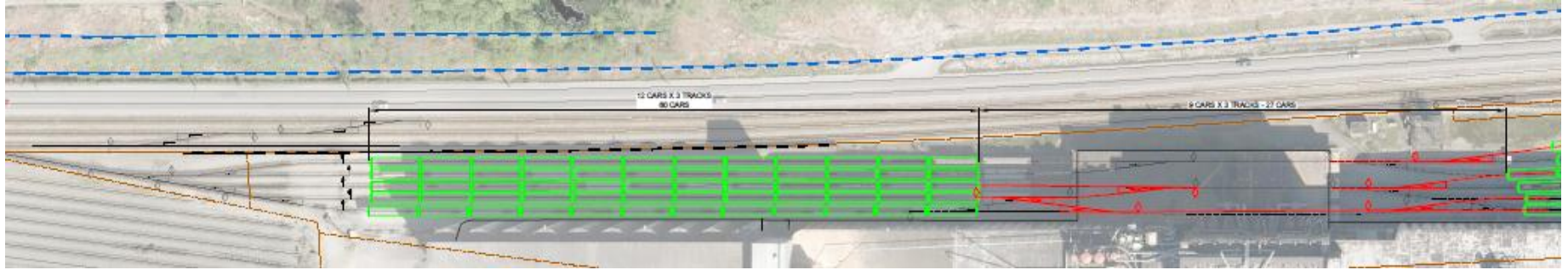
- Industry Overview - Vancouver is the largest port for exporting Western Canadian grain
- Competitive Advantage – The completion of this project will give much needed export capacity in the port that has the highest supply/demand imbalance
- Customer Focus - This additional export capacity will allow us to originate more grain in the country and service our export customers more efficiently

Project Scope

Convert rail receiving from conventional single direction (west to east) to bi-directional unloading

- Expand rail yard and receiving capacity
 - 3rd grain receiving pit, dust aspiration, receiving conveyors, 1 new indexer and associated gate opener
 - Replace 2 existing unidirectional rail car indexers with bi-directional indexers
 - Car spot modified/expanded to 120 cars via bi-directional unloading and one additional track
 - New dedicated lead track to adjacent CN rail yard
- Automation upgrades to increase efficiency
 - Automated switch control in rail yard for CN railroad and Cargill employees to control the movement of the cars
- Safety upgrades
 - Upgrade track yard and rail shed illumination with LED lights to meet COSH Regulations
 - Install track crossover catwalk near control stations to avoid at-grade crossing of the rail tracks
- **Estimated Project timeline: Begin construction May 2015 with completion in June 2016**

Vancouver Track Expansion



Rail Expansion- Benefits

Sustainability/Enriching Community

- Eliminates car banging noise from gravity roll out by always having the car string connected
- LED lights will be installed to reduce lighting high on the facility which impacts the local residents
- Significant reduction in noise and service from CN by new process for moving cars in/out
- Additional work for local contractors
- Continued work and future opportunities for local residents, Squamish and T'slei W'aututh Nations

Cargill Benefits

- Increase in handle of producer grain from Western Canada
- Reduced vessel dwell time due to decrease in car unload times
- Dedicated lead from CN will eliminate the blocking of main line tracks
- Increased car velocity should allow for growth on CN rail infrastructure in lower mainland
- Eliminate Shuttle wagon as a diesel emission source

Improved service from the railroads

- By adding a dedicated lead track the CN/CP will have direct access to our yard from Lynn Creek
- Will reduce the number of times the railroad will need to service the Terminal—more car space
- By increasing the speed of unload, the cars will turn back to the inland elevators more efficiently

Cargill's Impact in the Port Community

Our investment in the long-term growth and stability of North Vancouver

Since 2007:

- Over \$30 million invested in facility improvements
- Over \$131,000 donated annually to the United Way organization
- Currently employ - 135 unionized and 26 management positions
- Actively recruit from T'slei W'aututh and Squamish Nations

Cargill's Impact in the Port Community

Our community investment in North Vancouver

- **Harvest Project**
- **Novaco Child Care Centre**
- **North Vancouver School Waterfront Program**
- **Women Against Violence Against Women**
- **Presentation House**
- **Party at the Pier**
- **North Shore Mayor's Tournament**

Cargill's Community Support Commitment

LOW LEVEL ROAD

Tree Planting

- Plans being developed to plant new trees in the City of North Vancouver

HARVEST PROJECT

North Vancouver

- We would be interested in continuing our support with the Harvest Project
- Would be through both a donation and volunteer commitment

WATERFRONT UNITED

United Way Lower Mainland

- 4 to 1 match for Employee Donations
- Over \$131,000 annually donated

SCHOOL PROGRAMS

North Vancouver

- Continue to support School District Education Programs about Port and waterfront

FOOD BANKS

North Vancouver

- Continued donations and volunteer support for North Vancouver Food Banks

Project Development Milestones:

- Have verbal agreement for rail land necessary to provide lead track into our property
- Port Metro Vancouver Project Permit application with ongoing dialogue to gain approval this spring
- Received positive feedback and support on project from the CN
- Have developed a communication plan for connecting with local community leaders to help explain the project. Community consultation held on February 5 at the Pinnacle Hotel in North Vancouver. Advertised to local residents in advance. Meeting with the CNV City Council on Feb 23rd.

The logo features a green, curved shape resembling a leaf or a drop above the word "Cargill".

Cargill[®]