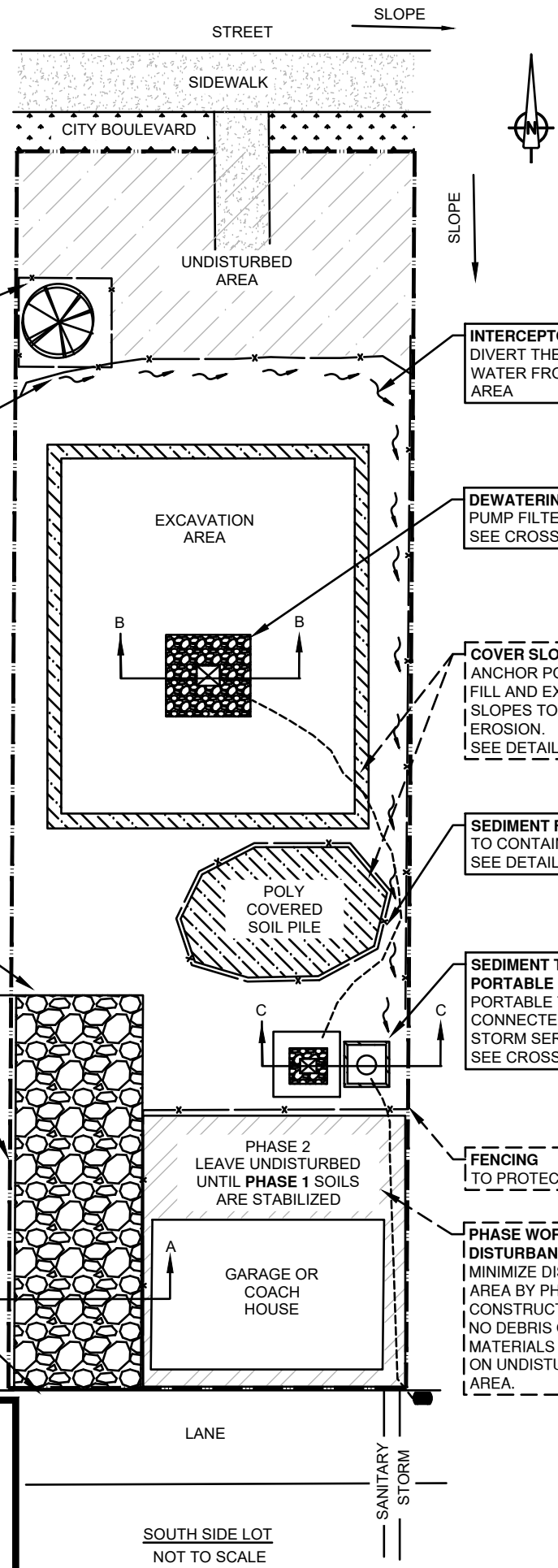


CATCH BASIN INSERT
INSTALL IN FIRST CATCH BASIN DOWN STREAM IN THE LANE AND STREET. SEE DETAIL



SEDIMENT FENCE
TO PREVENT OFF SITE RUNOFF. SEE DETAIL

INTERCEPTOR TRENCH
DIVERT THE SURFACE WATER FROM THE WORK AREA

DEWATERING PUMP
PUMP FILTERED WATER. SEE CROSS-SECTION B - B

COVER SLOPES
ANCHOR POLY SHEETS TO FILL AND EXCAVATED SLOPES TO PREVENT EROSION. SEE DETAIL

SEDIMENT FENCE
TO CONTAIN SEDIMENT SEE DETAIL

SEDIMENT TRAP OR PORTABLE SEDIMENT TANK
PORTABLE TANK OR TRAP CONNECTED TO MUNICIPAL STORM SERVICE. SEE CROSS-SECTION C - C

FENCING
TO PROTECT PHASE 2

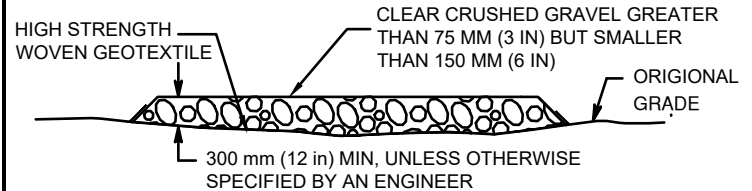
PHASE WORK AREA DISTURBANCES
MINIMIZE DISTURBED AREA BY PHASING CONSTRUCTION. NO DEBRIS OR MATERIALS STORED ON UNDISTURBED AREA.

ACCESS PAD
75MM CLEAR GRAVEL
MIN. 30CM DEEP
MIN. 15M IN LENGTH OR
WASH WHEELS BEFORE
ENTERING LANE.
SEE CROSS-SECTION A-A

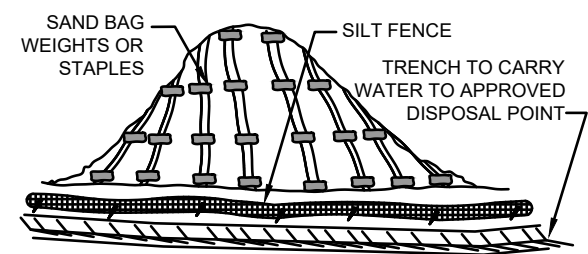
- DAILY MAINTENANCE ACTIVITIES**
- SWEEP LANE/ROAD
 - CHECK CATCH BASIN INSERTS
 - CHECK SEDIMENT TRAP AND EMPTY WHEN 1/2 FULL
 - ENSURE POLY COVERINGS ARE SECURE

1. EROSION CONTROL

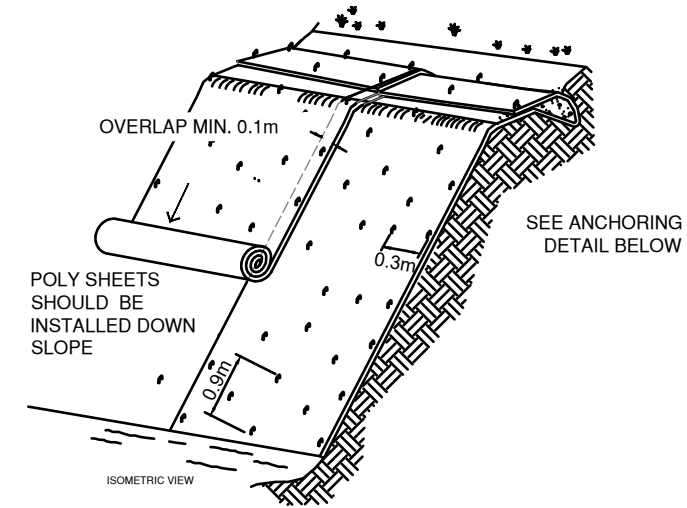
EROSION CONTROL IS THE FIRST LINE OF DEFENSE. IMPLEMENTING ALL EROSION CONTROLS PROPERLY WILL SAVE YOU MONEY AND TIME.



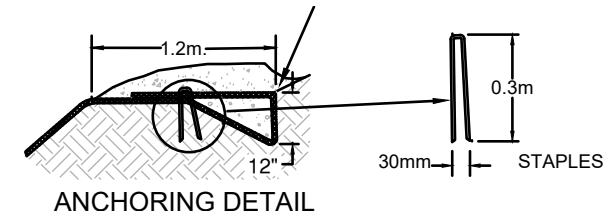
SECTION A - A
NTS



STOCKPILE

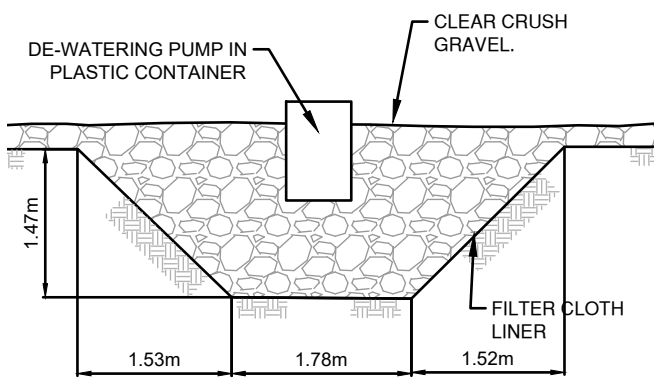


TYPICAL SLOPE SOIL STABILIZATION

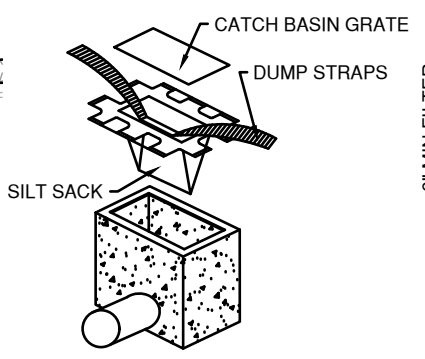


ANCHORING DETAIL

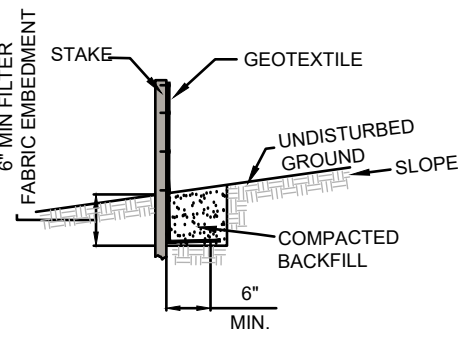
2. SEDIMENT CONTROL



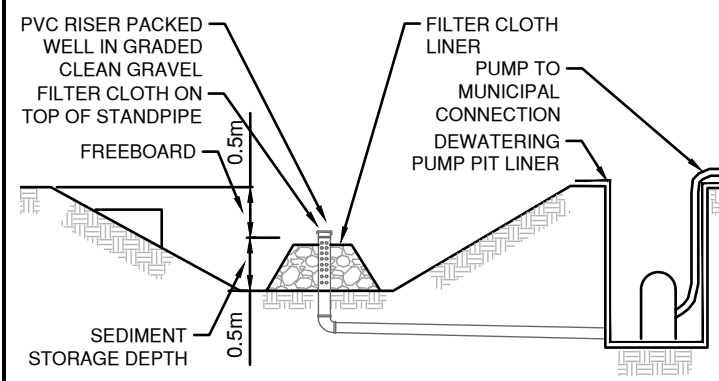
SECTION B - B
DEWATERING PUMP SITING



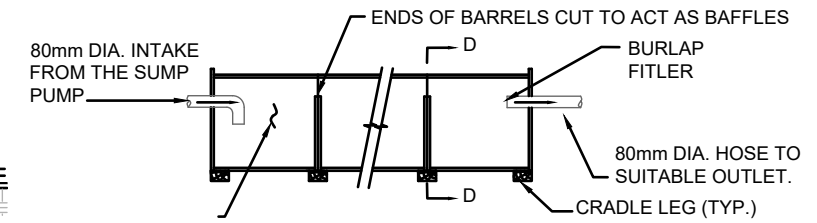
CATCH BASIN INSERT DETAIL



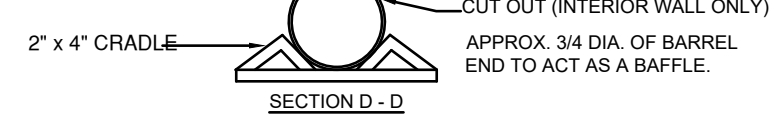
SILT FENCE DETAIL



SECTION C - C
SEDIMENT TRAP



55 GAL. DRUMS (WELDED END TO END), PLASTIC CHAMBER (LIQUID TOTES) OR SIMILAR.



PORTABLE SEDIMENT TANK

1. DAILY MAINTENANCE REQUIRED.
2. STEEL DRUMS ARE AN EXAMPLE DUE TO THEIR READY AVAILABILITY. ANY TANKS THAT MEET THE VOLUME REQUIREMENTS MAY BE USED.
3. ALL SEDIMENT COLLECTED IN THE TANK SHALL BE DISPOSED OF IN A SEDIMENT TRAPPING DEVICE.

USE EITHER SEDIMENT TRAP OR SEDIMENT TANK



141 West 14th Street, North Vancouver, BC V7M 1H9

SEDIMENT AND EROSION CONTROL

TYPICAL SEDIMENT AND EROSION SITE PLAN

S&E PLAN NORTH SIDE LOT

DATE:	AUG 26, 2020
REV. NO.:	1
DWG.No.:	E1S
SCALE:	AS SHOWN
DRAWN:	JN
CHECKED:	AN/FR
APPROVED:	FR