

Hardsurfacing	
KEY	MATERIAL
S0	<b>Cast In Place Concrete Paving - Sidewalk</b> Refer to Civil Engineers
S1	<b>CIP Concrete Paving - on Site</b> Colour: Charcoal Finish: Broom-finish
S2	<b>CIP Concrete Paving - on Site</b> Colour: Natural Finish: Broom-finish Sawcut pattern as per plan.
S3	<b>Pour-in-placed Rubber Safety Surfacing</b> Colour: Mixed color pattern as shown on plan
S4	<b>Hydrapressed Concrete Slab Pavers</b> Size: 24" x 24" x 2" thk. Ld-08 Colour: Charcoal
S5	<b>Hydrapressed Concrete Slab Pavers</b> Size: 24" x 24" x 2" thk. Colour: Natural
S6	<b>Gravel Strip</b>

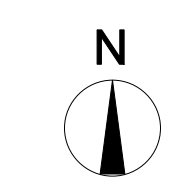
Softscape	
	Planting area
	Existing street trees
	Privacy hedging
	Proposed trees

Furniture + Structure		
KEY	Legend	Description
F1		<b>Gas Barbecues</b> - Genesis® II E-330 Gas Grill - Color: Copper
F2		<b>Harpo Bench</b> - Supplied by Landscape Forms - Wide wood
F3		<b>Metal Planter Box</b> F4 - 20" x 46" x 24"h, Matte Black - Rectangle wide series - Supplied by Green Theory (604 475 7002)
F4		<b>Decorative Metal access gate</b> Pattern to be coordinated w. manufacturer
F5		<b>Railway Carriage</b> Product number: M526 -Max. fall height:28.00 cm -Supplied by Kompan

Lighting Legend	
Landscape lighting shown for information only. Refer to electrical drawings for final types, quantities and locations.	
	Planter Wall / Niche light
	Entrance Lighting (on Building)
	Patio Lighting (on Building)



1 Jan.27 - 22 DP  
no.: date: item:  
Revision:

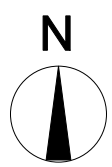
**dk** DURANTE KREUK LTD.  
102 - 1637 West 5th Avenue  
Vancouver B.C. V6J 1N5  
P:604.684.4611  
F:604.684.0577  
www.dk.bc.ca

Project:  
**120-128 East 14th Street**  
North Vancouver.

Draw by: AL  
Check by: SV  
Date: INSERT DATA  
Scale: 1/8"=1'-0"  
Drawing Title:

**Landscape Site Plan**  
**Level 1**

Project No.:  
**21075**  
Sheet No.:



1 Jan.27 - 22 DP  
 no.: date: item:

Revision:

**dk** DURANTE KREUK LTD.  
 102 - 1637 West 5th Avenue  
 Vancouver B.C. V6J 1N5  
 P:604.684.4611  
 F:604.684.0577  
 www.dkl.bc.ca

Project:

**120-128 East 14th Street  
 North Vancouver.**

Draw by: AL

Check by: SV

Date: INSERT DATA

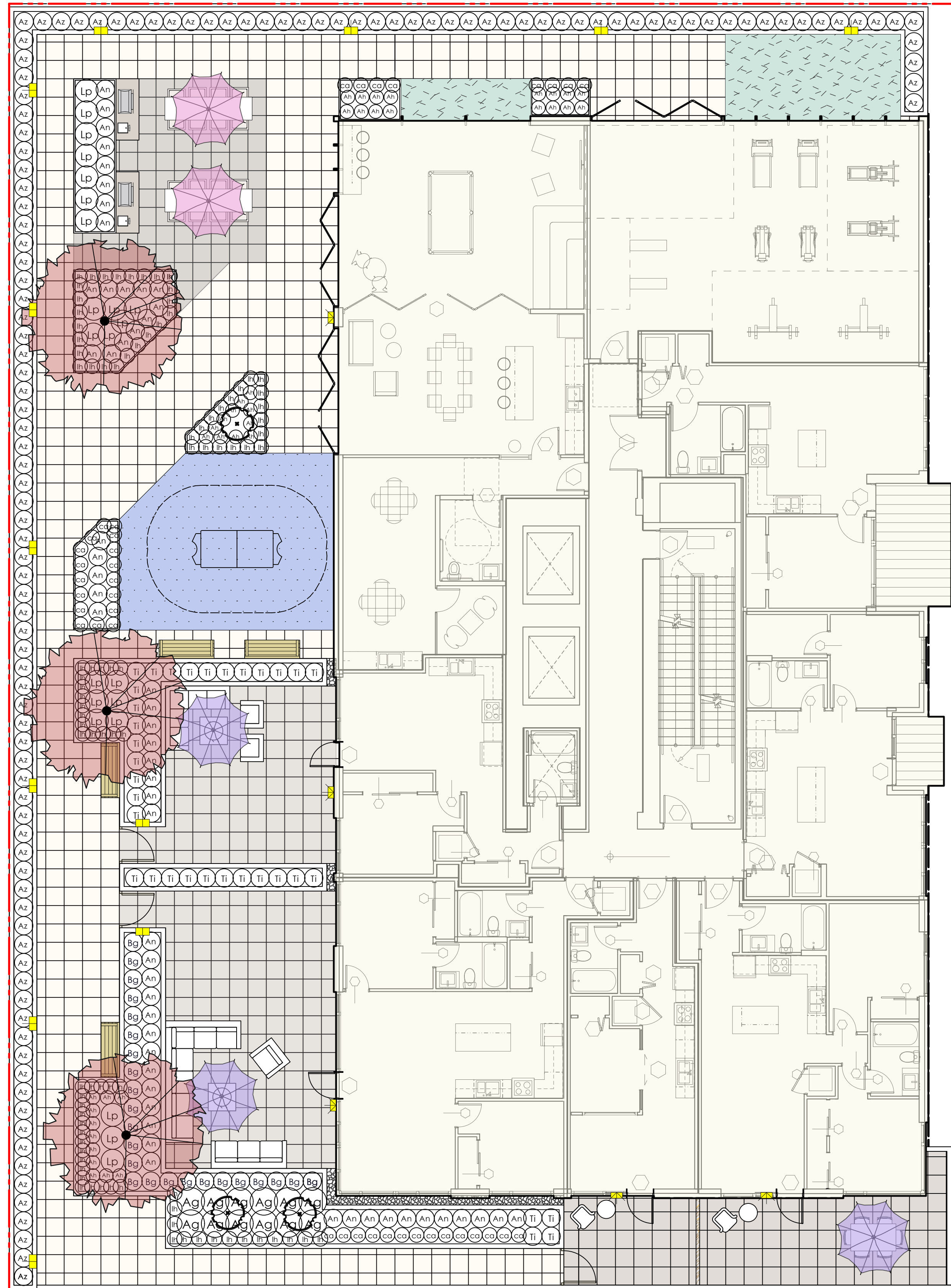
Scale: 1/8"=1'-0"

Drawing Title:

**Landscape Site Plan  
 Level 2**

Project No.:  
 21075

Sheet No.:

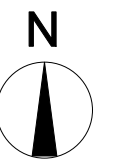


**GENERAL PLANTING NOTES:**

1. All work shall meet or exceed the requirements as outlined in the Current Edition of the Canadian Landscape Standard.
2. Plant sizes and related container classes are specified according to the Current Edition of the Canadian Landscape Standard. For container classes #3 and smaller, plant sizes shall be as shown in the plant list and the Standard; for all other plants, both plant size and container class shall be as shown in the plant list. Specifically, when the plant list call for #5 class containers, these shall be as defined in the BCNTA (ANSI) Standard.

**GENERAL IRRIGATION NOTES:**

1. All items as specified Rainbird or pre-approved equals.
3. Backflow Preventer, Blowout Tee and Controller to be installed to meet local plumbing codes.
4. Exact locations and layout to be approved by Landscape Architect prior to installation. No valves or valve boxes to be located within hard paved surfaces. Adjust all head locations, heights, and overall performance of the system to the satisfaction of the Landscape Architect.
5. All valve boxes to have 6" of drain rock in base.
6. Install sleeving for pipes below all paved surfaces.
7. Minimum 16" cover over all irrigation lines.
8. Irrigation is to be provided to all soft landscape areas.



1 Jan.27 - 22 DP  
no.: date: item:

Revision:



**PLANT LIST**

TREES	Sym	Qty	Latin Name	Common name	Size/Spacing
		3	Cornus kousa	Kousa Dogwood,	5cm cal. B&B
<b>Shrubs</b>					5cm cal. B&B
	<b>Sym</b>	<b>Qty</b>	<b>Latin Name</b>	<b>Common name</b>	<b>Size/Spacing</b>
	An	56	Azalea 'Nikko'	Nikko Azalea	#2 pot,24" O.C.
	Ag	12	Azalea 'Gumpo White' (Satsuki hybrid)	Gumpo White Azalea	#2 pot,24" O.C.
	Ah	38	Azalea 'Hino-White'	Azelea Hino White	#2 pot,18" O.C.
	Bg	25	Buxus microphylla japonica 'Green Beauty'	Green Beauty Boxwood	#3 pot,24" O.C.
	Az	122	Camellia japonica 'Girard's Fuchsia'	Japanese Azalea	#2 pot,24" O.C.
	Lp	22	Hamamelis x intermedia 'Arnold Promise'	Arnold Promise Witch Hazel	15 ga. pot, Specime
	Ti	34	Lonicera Pileata	Privet Honeysuckle	#2 pot,30" O.C.
			Taxus x media 'Hilli' (Male Plants Only)	Hill's Yew	4' ht B&B, R to R
<b>GROUNDCOVERS, GRASSES, FERNS &amp; VINES</b>					
	<b>Sym</b>	<b>Qty</b>	<b>Latin Name</b>	<b>Common name</b>	<b>Size/Spacing</b>
	ca	39	Carex morrowii 'Ice Dance'	Ice Dance Japanese Sedge	#1 pot 12" O.C.
	lh	94	Lavandula angustifolia 'Hidcote'	Hidcote Lavender	#2 pot 18" O.C.

Project:

120-128 East 14th Street  
North Vancouver.

Draw by: AL

Check by: SV

Date: INSERT DATA

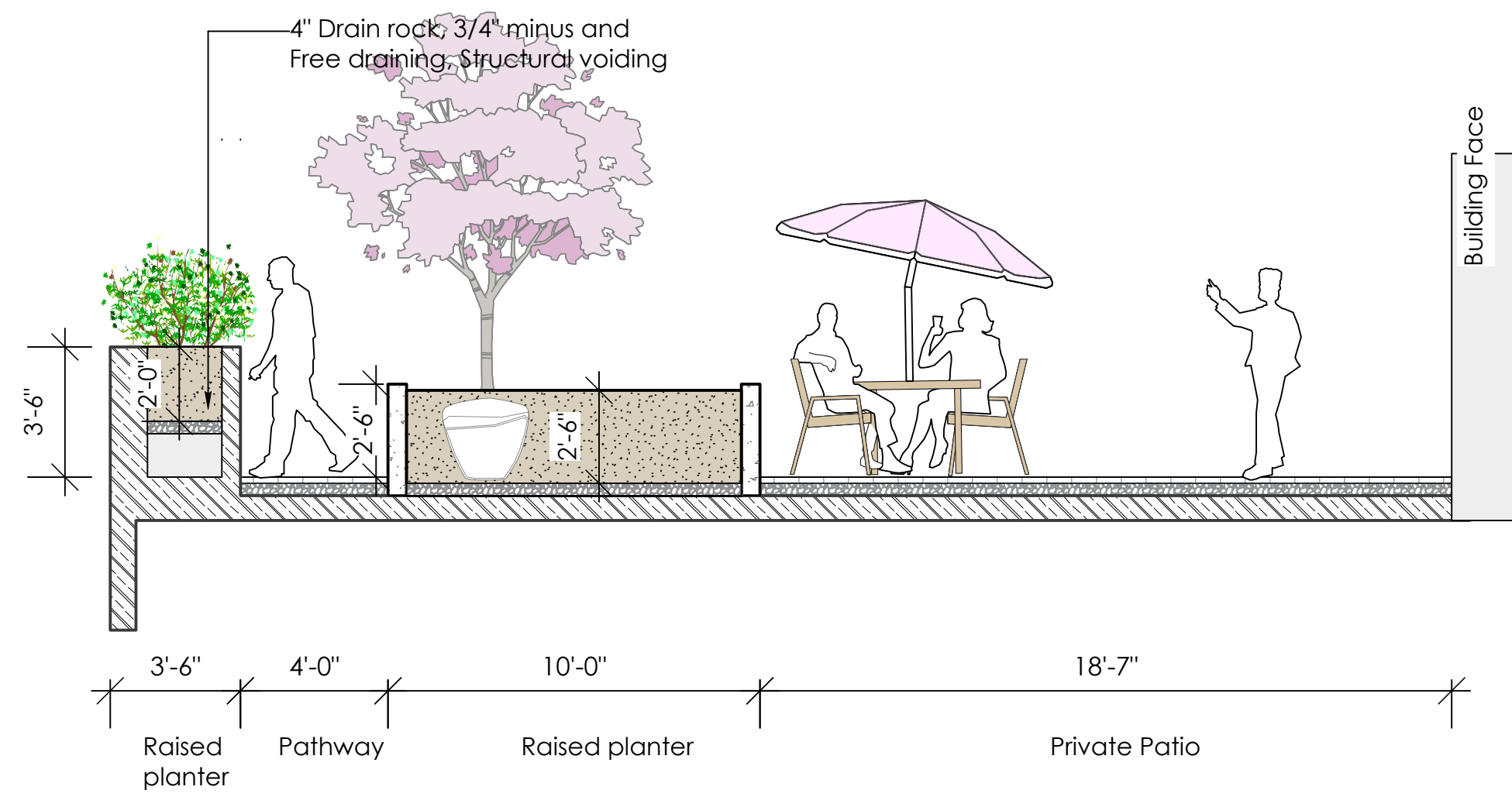
Scale: 1/8"=1'-0"

Drawing Title:

**Plant Design Plan  
Level 2**

Project No.:  
21075

Sheet No.:



**A** Section through pathway and private patio  
Scale: 1/4" = 1'-0"

1 Jan.27 - 22 DP  
no.: date: item:  
Revision:

**DURANTE KREUK LTD.**  
102 - 1637 West 5th Avenue  
Vancouver B.C. V6J 1N5  
P:604.684.4611  
F:604.684.0577  
www.dkl.bc.ca

Project:

**120-128 East 14th Street  
North Vancouver.**

Draw by: AL

Check by: SV

Date: INSERT DATA

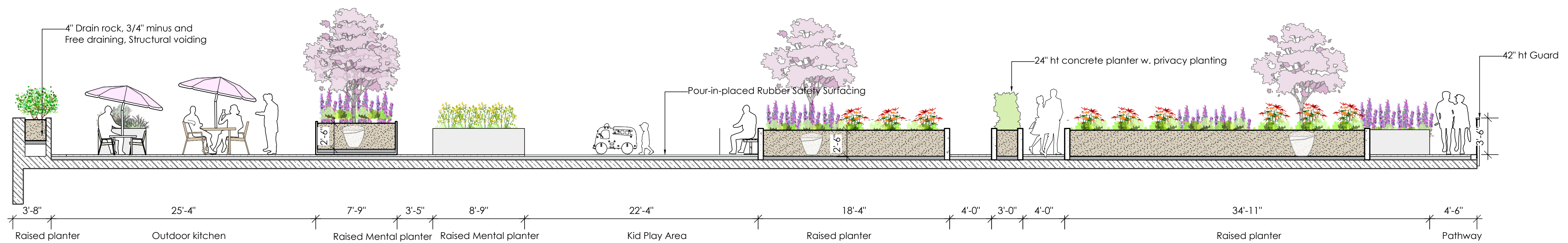
Scale: As shown

Drawing Title:

**Landscape Section**

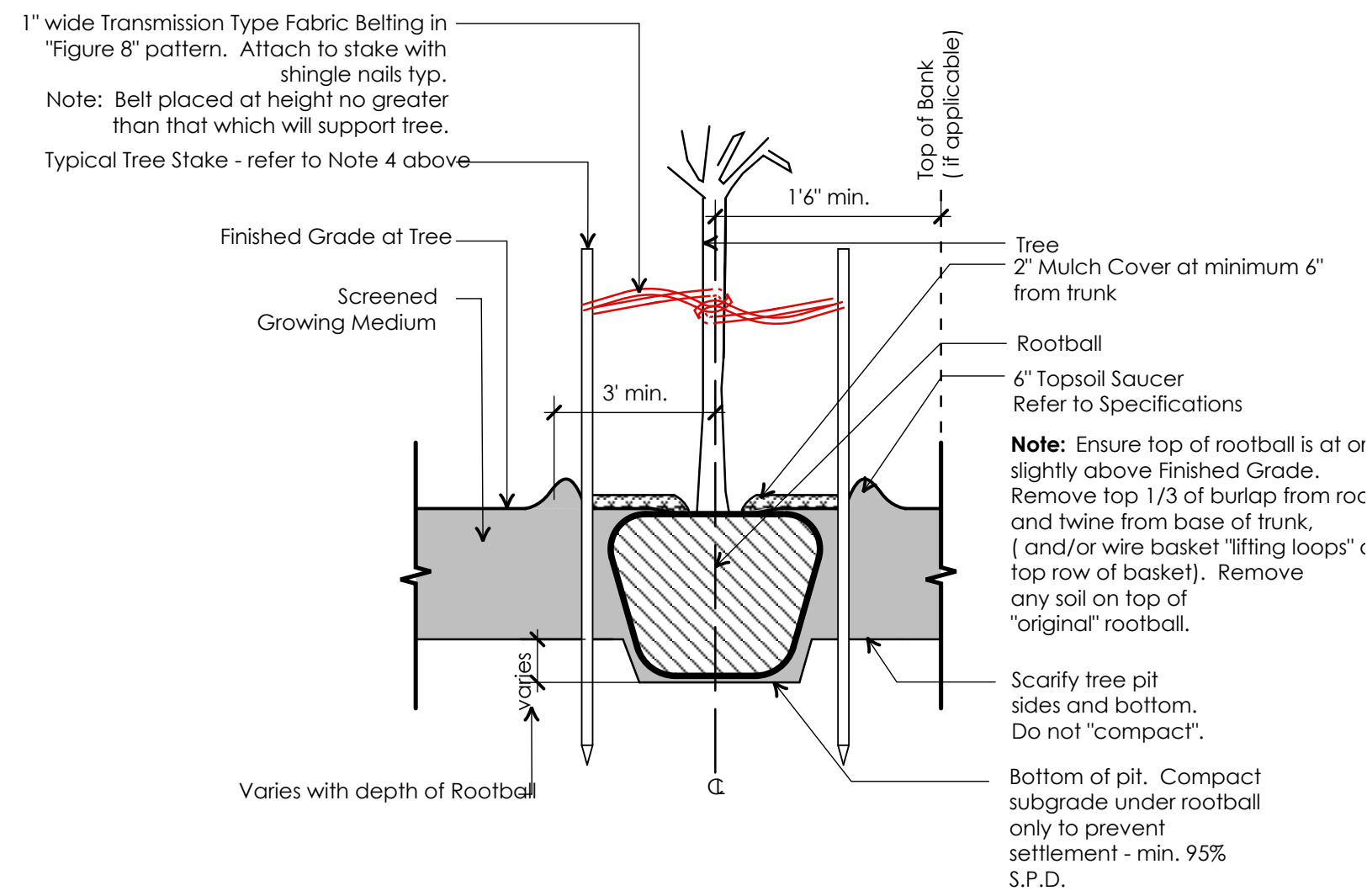
Project No.:  
**21075**

Sheet No.:



**B** Section through outdoor kitchen and kid play area  
Scale: 3/16" = 1'-0"

- General Notes:**
- Do not cut Tree Leader.
  - Protect tree from damage during planting. Ensure rootball protected from Sun, Frost or Dessication.
  - Ensure tree location does not conflict with Underground Services. "Call before digging".
  - All street trees to be staked with 2 - 4" x 8' long. Minimum depth of stake embedment is 3'. Ensure stakes do not penetrate or damage rootball. Ensure all stakes are aligned parallel to sidewalk/road on tree pit centreline.
  - Provide min. 5 cubic meters of growing medium per tree.
  - Refer to Growing Medium Chart below for surface area depth of Growing Medium.



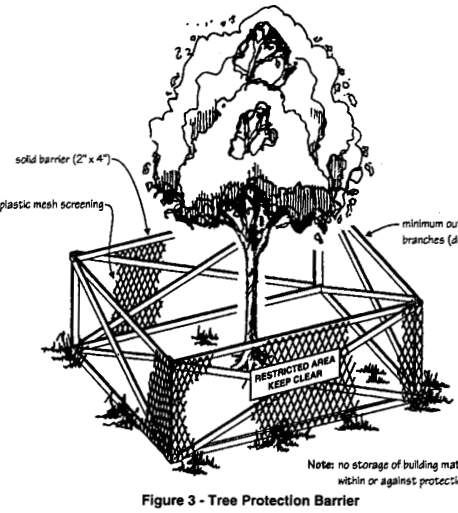
Depth of Growing Medium Total (mm)	Area (M2)	Variation 1		Variation 2	
		Size of Surface Square	Size of Surface Circle	Size of Surface Square	Size of Surface Circle
450	11.11	3.3 M x 3.3 M	3.80 M Ø		
600	8.33	2.9 M x 2.9 M	3.25 M Ø		
750	6.67	2.6 M x 2.6 M	2.90 M Ø		

**2 Tree Retention**

**How can trees be successfully retained?**  
Trees can be retained only if an adequate root mass can be maintained in good condition. Trees retained with inadequate roots, or where roots sustain significant damage due to construction, will most likely die within a few years. If the damage is severe, they can soon become hazardous and fall, potentially causing damage to persons and property.

**Protective barriers**  
Retaining significant trees when properties are redeveloped is important to maintaining the established natural character associated with many of Vancouver's neighbourhoods. Their continued healthy growth is greatly enhanced by the By-law requirement of providing special protective barriers. Barriers are required to protect the roots, trunks and branches of trees on private property as well as on City property prior to and during site construction (Figure 3).

(To calculate the dimensions for tree barriers on private property, refer to Schedule D - Tree Protection Distance Table below. For trees on City property, refer to Section 4.2 of the Tree Retention, Relocation and Replacement Guidelines.)

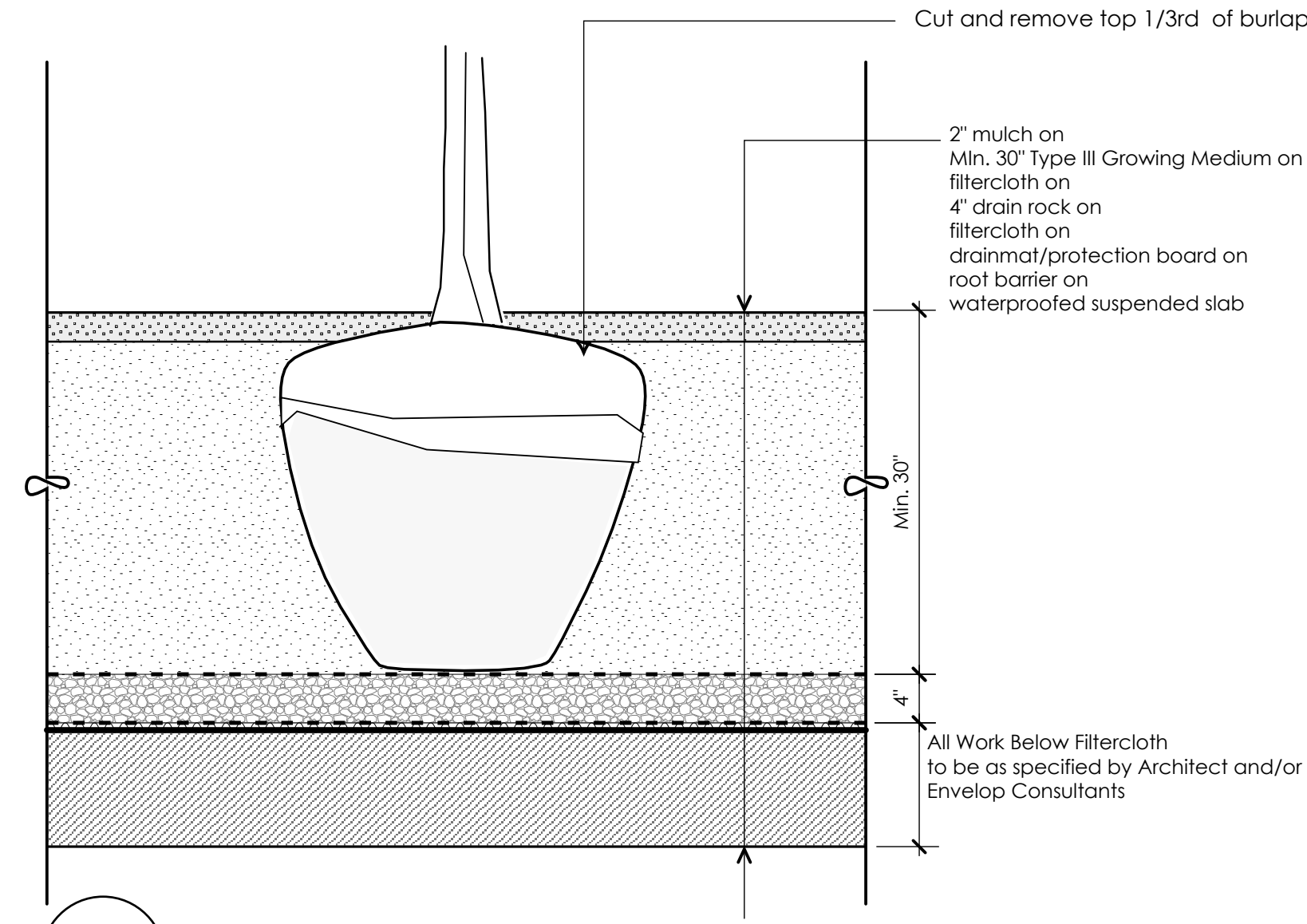


**Schedule D - Tree Protection Distance Table**

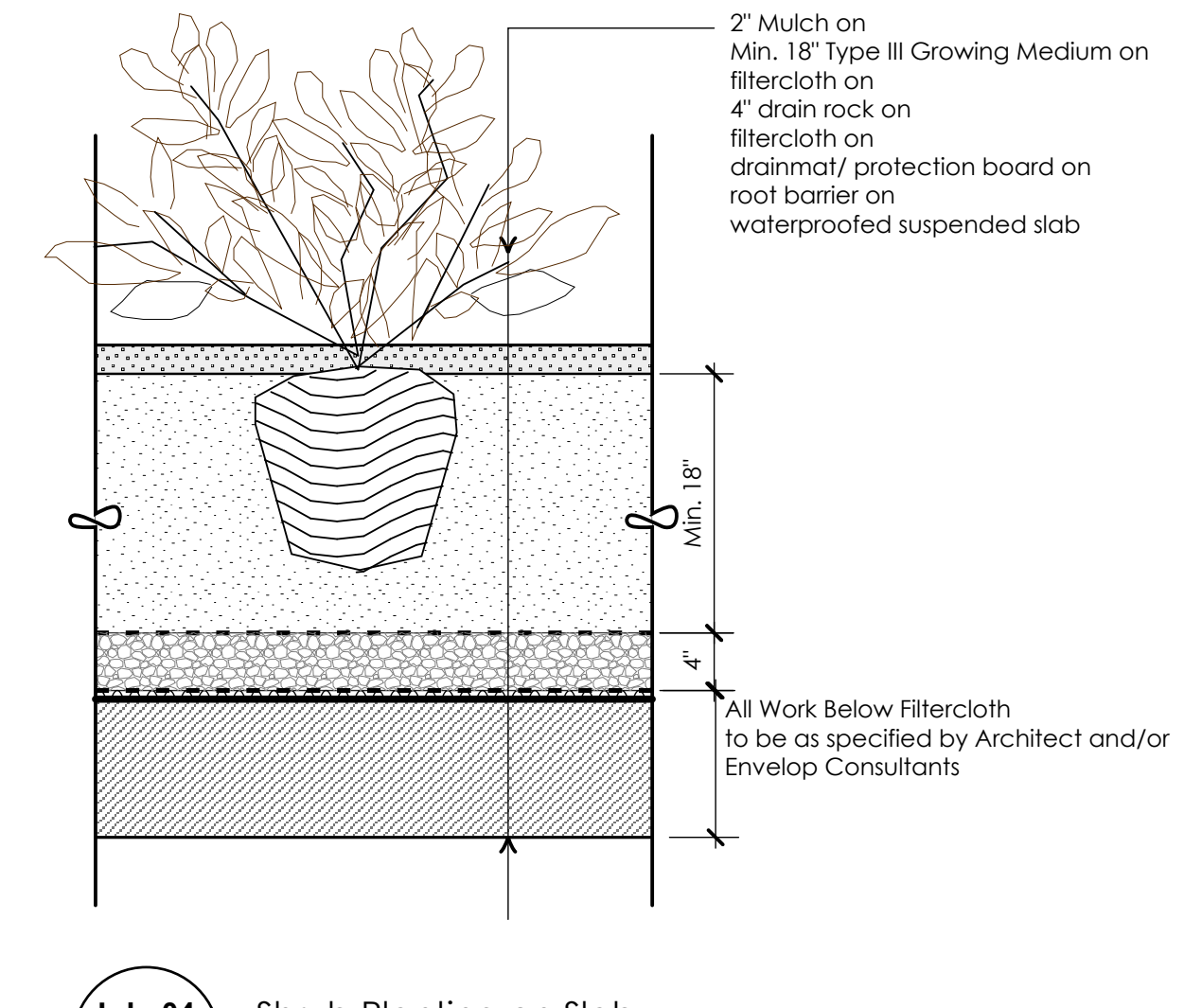
Trunk Diameter (mm)	Minimum Protection Radg (Radius from Trunk in metres)
20	1.2
25	1.5
30	1.8
35	2.1
40	2.4
45	2.7
50	3
55	3.3
60	3.6
70	4.2
80	5
100	6.0

\* Table reproduced from the By-law

**Ld - 02** Tree Protection Fencing  
**L 2-1** Scale: NTS

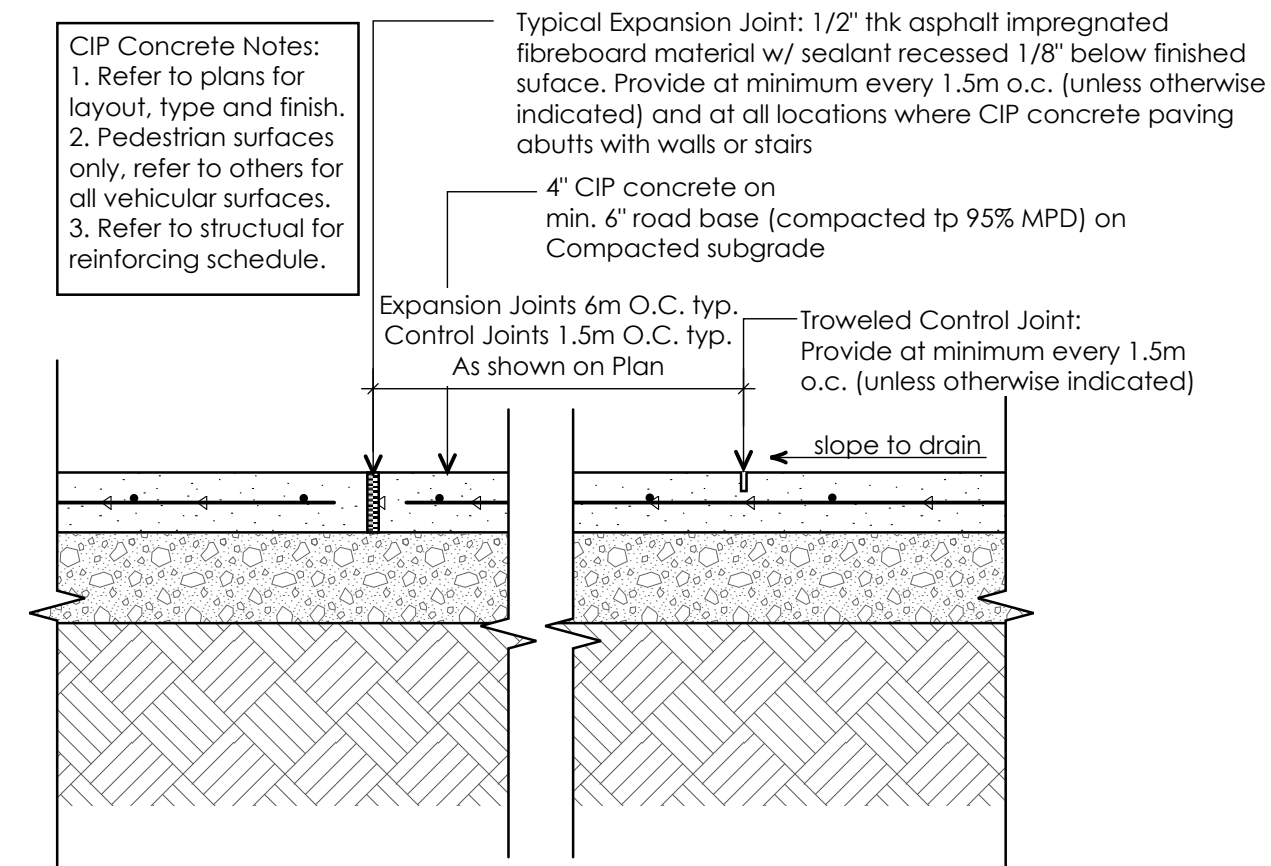


**Ld - 03** Tree Planting on Slab  
**L 2-1** Scale: 1" = 1'-0"

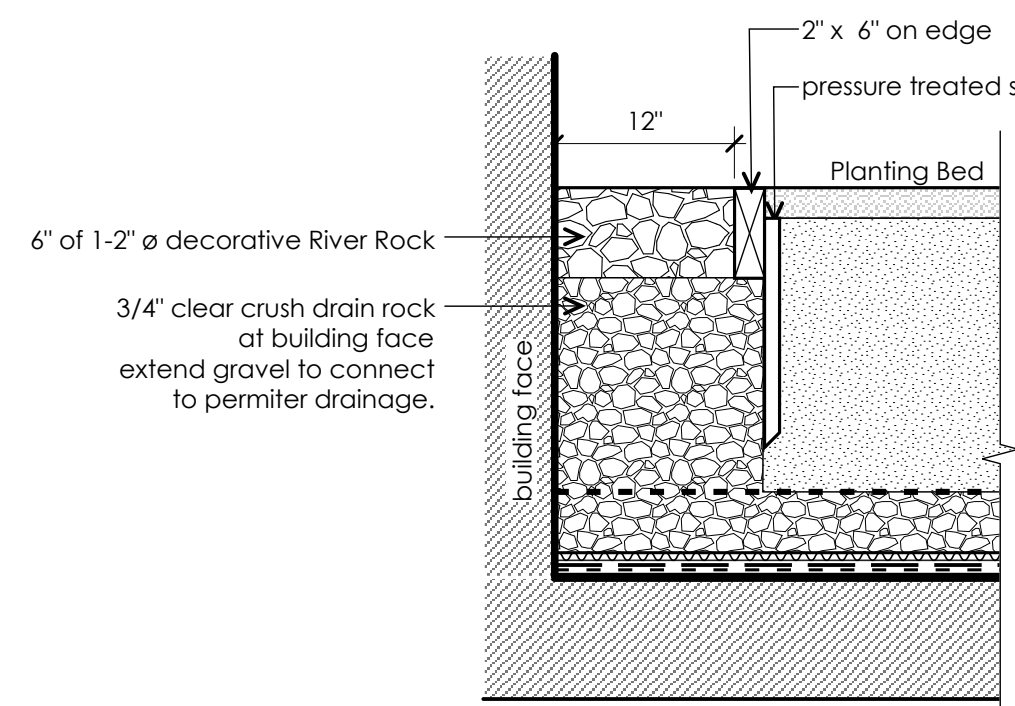


**Ld - 04** Shrub Planting on Slab  
**L 2-1** Scale: 1" = 1'-0"

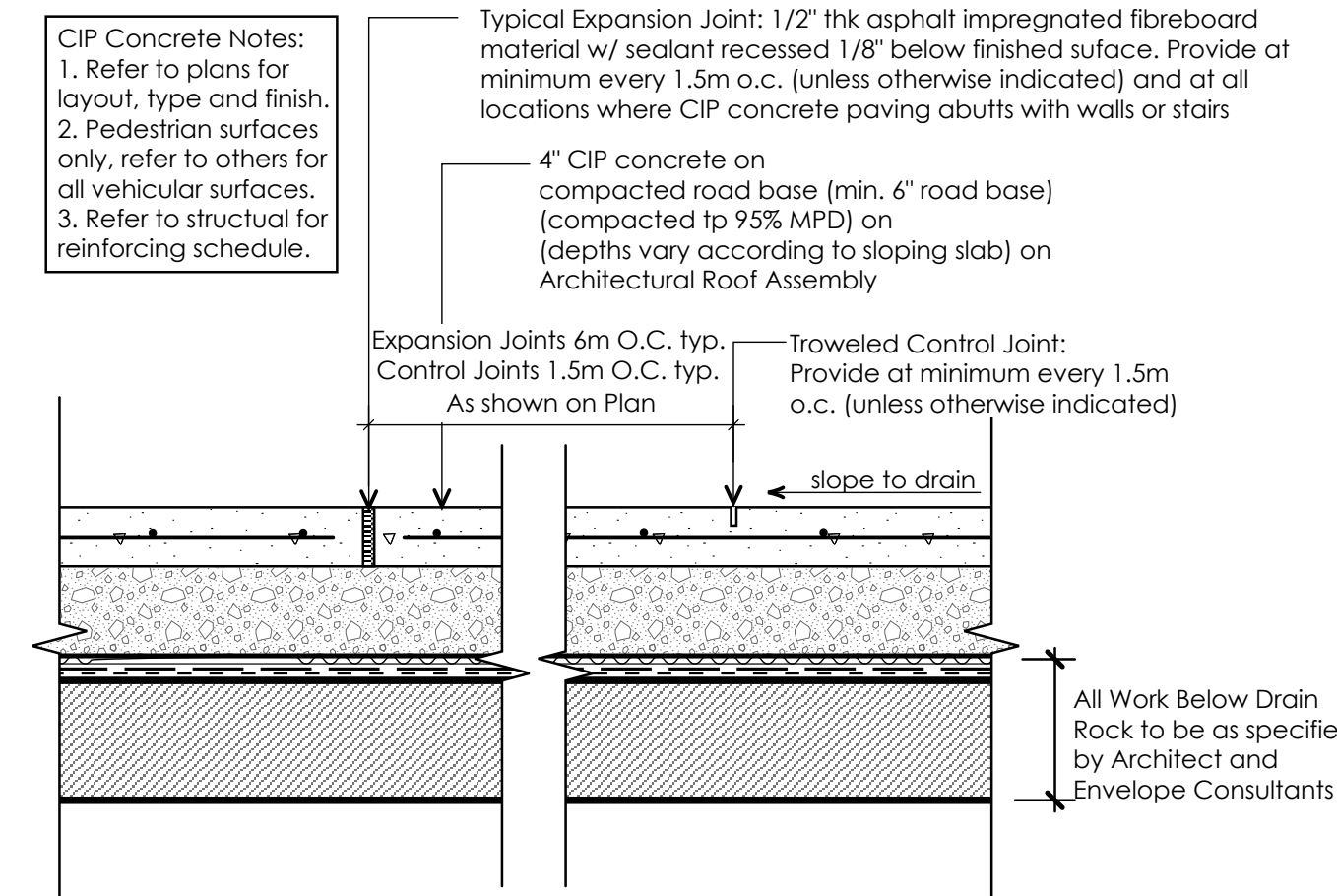
**Ld - 01** Tree Planting on Grade  
**L 2-1** Scale: 1" = 1'-0"



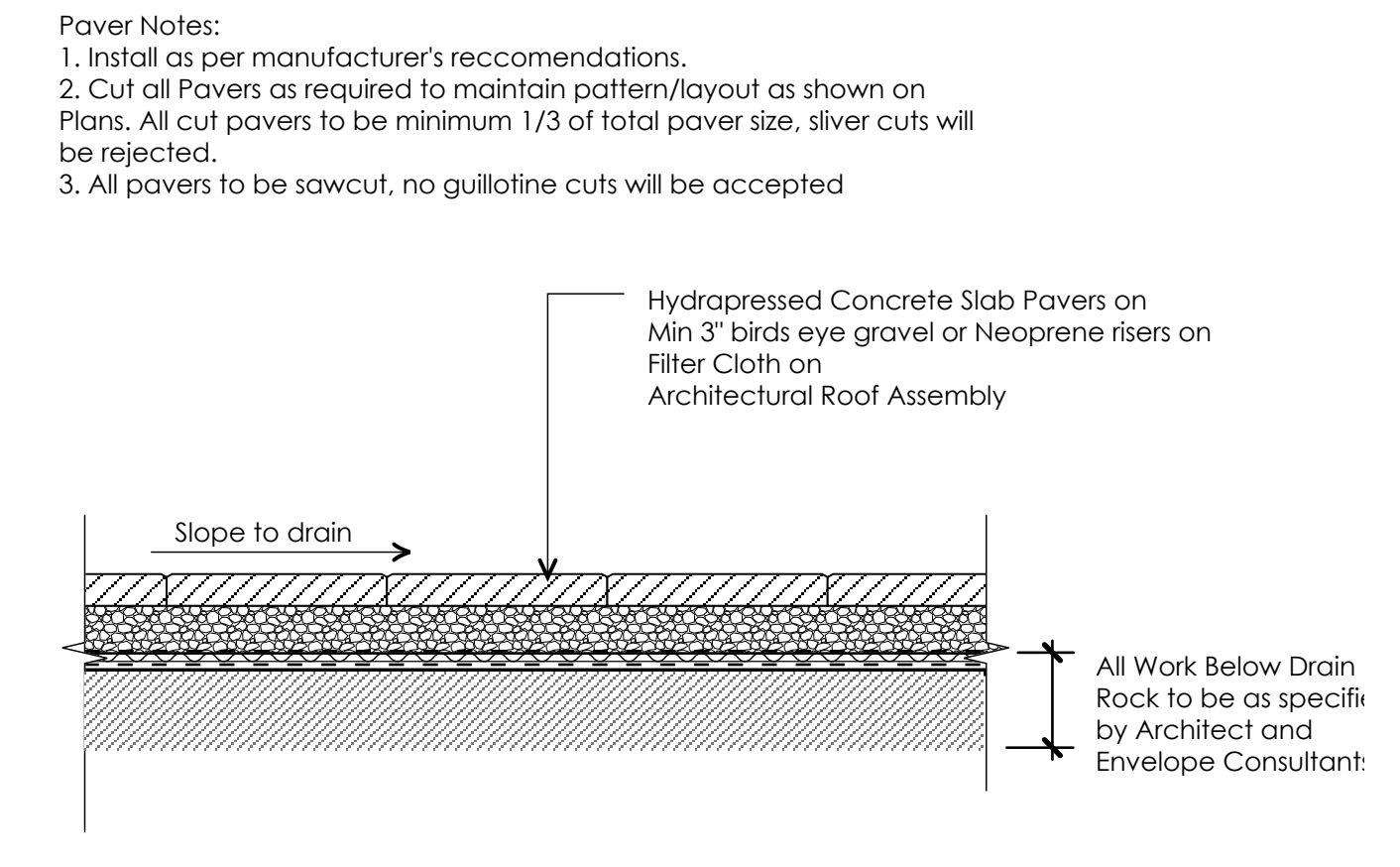
**Ld - 05** CIP Concrete Paving on Grade (Pedestrian)  
**L 2-1** Scale: 1" = 1'-0"



**Ld - 06** Drip Strip at Building Face  
**L 2-1** Scale: 1" = 1'-0"



**Ld - 07** CIP Concrete Paving on Grade (Slab)  
**L 2-1** Scale: 1" = 1'-0"



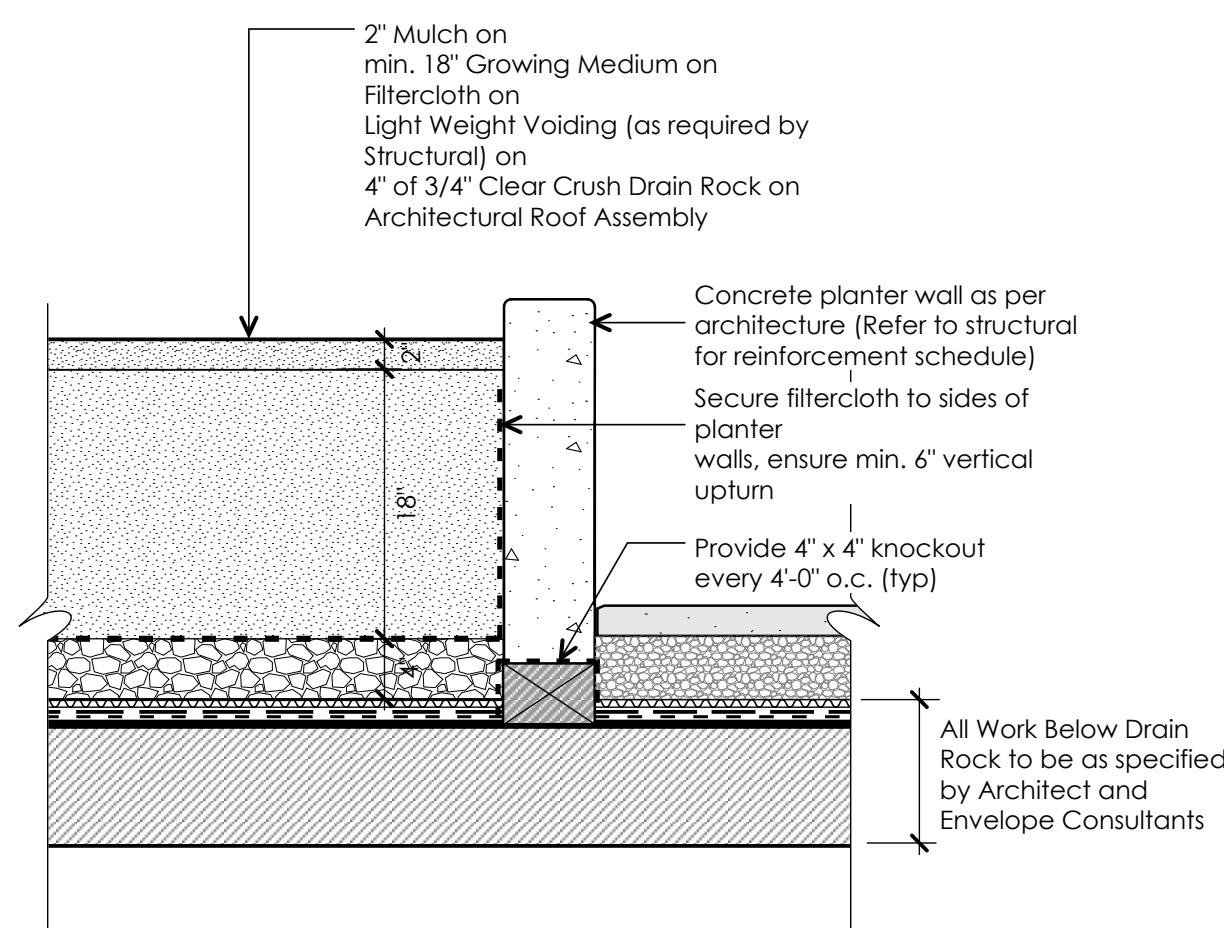
**Ld - 08** CIP Concrete Paving on Grade (Slab)  
**L 2-1** Scale: 1" = 1'-0"

**NOTES**

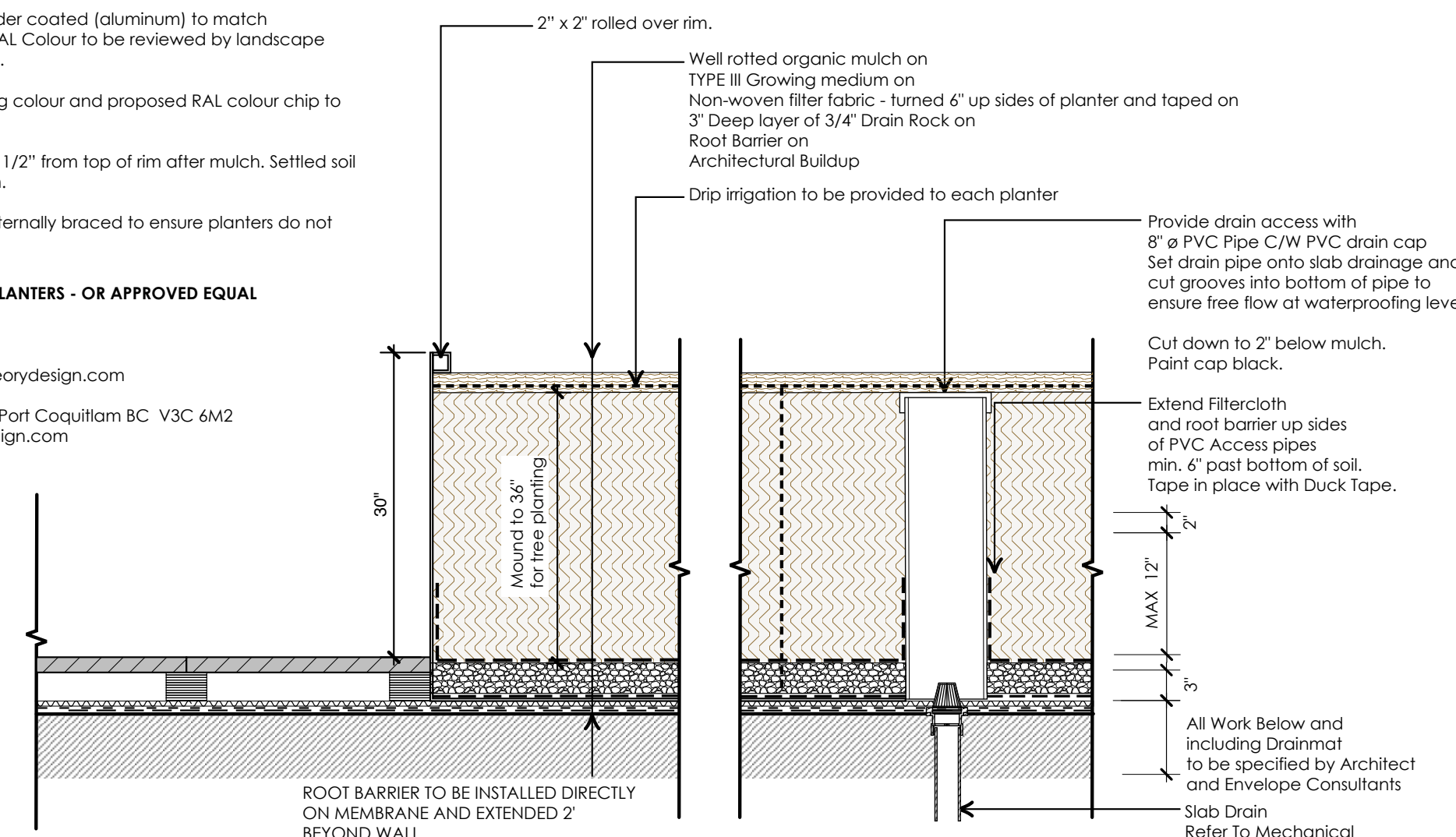
- Installation to be completed in accordance with manufacturer's specifications
- Planters to be installed with modular planter system to dimensions shown. Refer to L03 for dimensions.
- Planters to be get powder coated (aluminum) to match architectural railings. RAL Colour to be reviewed by landscape architect and architect.
- Provide sample of rolling colour and proposed RAL colour chip to consultant for review.
- Soil level to be installed 1/2" from top of rim after mulch. Settled soil level to be 2" below rim.
- Larger planters to be internally braced to ensure planters do not deflect outward.

**CONTACT FOR METAL PLANTERS - OR APPROVED EQUAL**

**Green Theory**  
Tristan Tresselt  
Email: tristan@greentheorydesign.com  
Phone: 604 475 7002  
804 1515 Broadway St. Port Coquitlam BC V3C 6M2  
https://greentheorydesign.com



**Ld - 09** Typical CIP Concrete Planter on Slab  
**L 2-1** Scale: 1" = 1'-0"



**Ld - 10** Prefabricated Metal Planters  
**L 2-1** Scale: 1" = 1'-0"

1 Jan.27 - 22 DP  
no.: date: item:

Revision:

**DURANTE KREUK LTD.**  
102 - 1637 West 5th Avenue  
Vancouver B.C. V6J 1N5  
P:604.684.4611  
F:604.684.0577  
www.dkl.bc.ca

Project:  
**120-128 East 14th Street  
North Vancouver.**

Draw by: AL  
Check by: SV  
Date: INSERT DATA  
Scale: INSERT SCALE  
Drawing Title:

**Landscape Details**

Project No.:  
**21075**  
Sheet No.: