

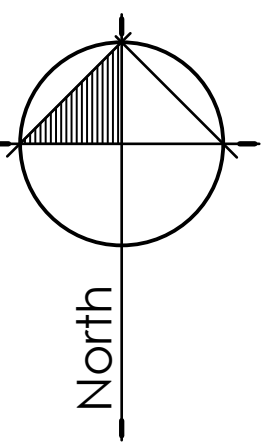
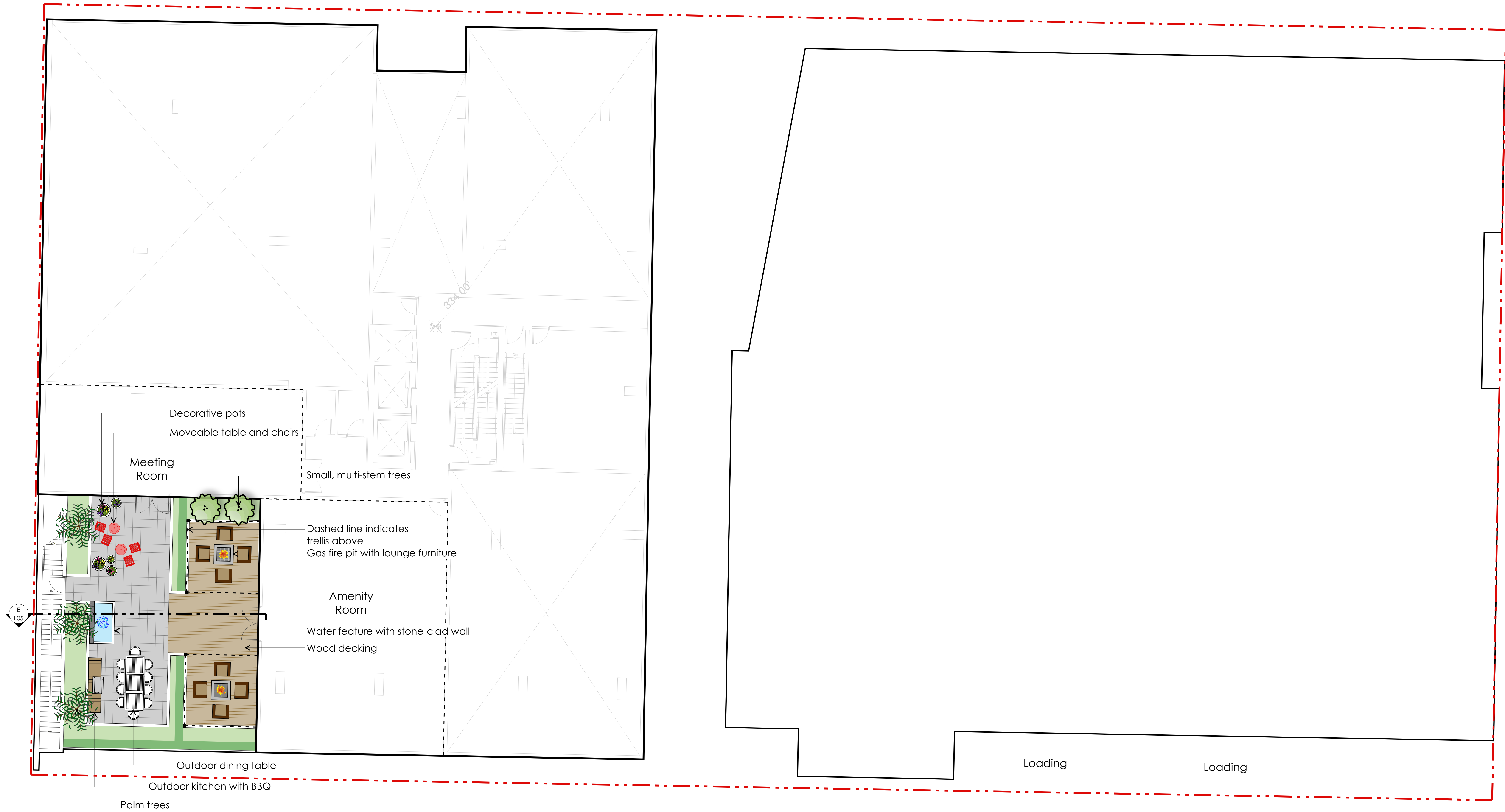
New brick pavers to match existing
 New street trees to match existing as per City of North Vancouver standards
 Retention of existing trees subject to city review

CIP concrete sidewalk as per City of North Vancouver Lonsdale streetscape standards
 Existing brick pavers

EAST 15th STREET

ST. GEORGE'S AVENUE





1441 St. Georges Ave Level 2 Amenity Deck

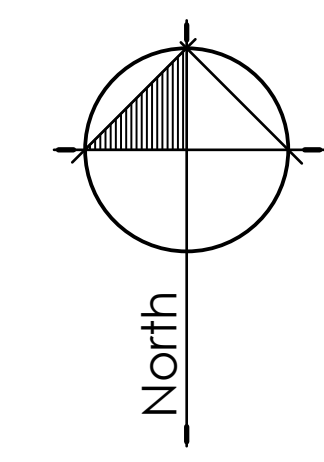
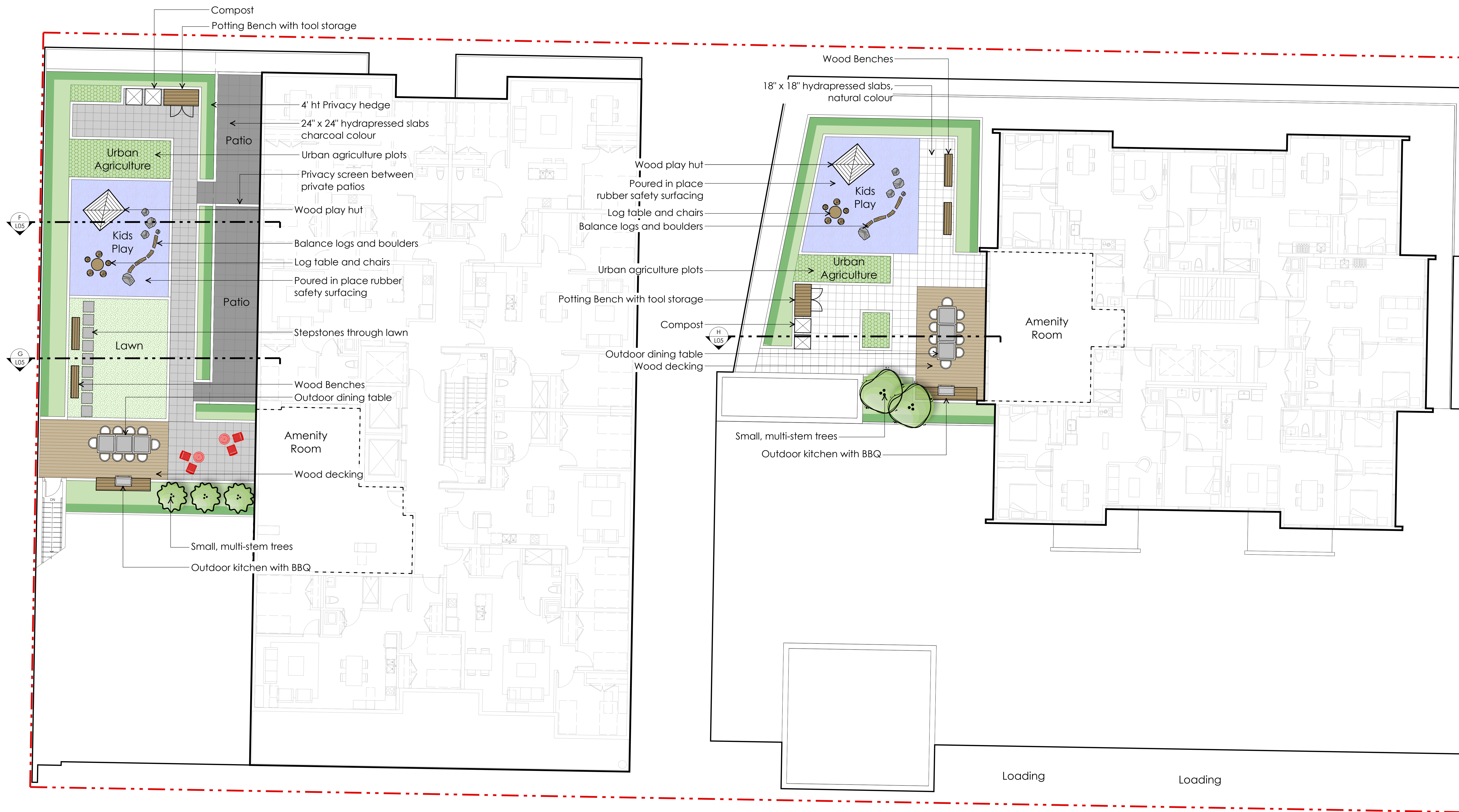


DURANTE KREUK LTD. LANDSCAPE ARCHITECTS
 102-1637 West 5th Avenue Vancouver, B.C. V6J 1N5

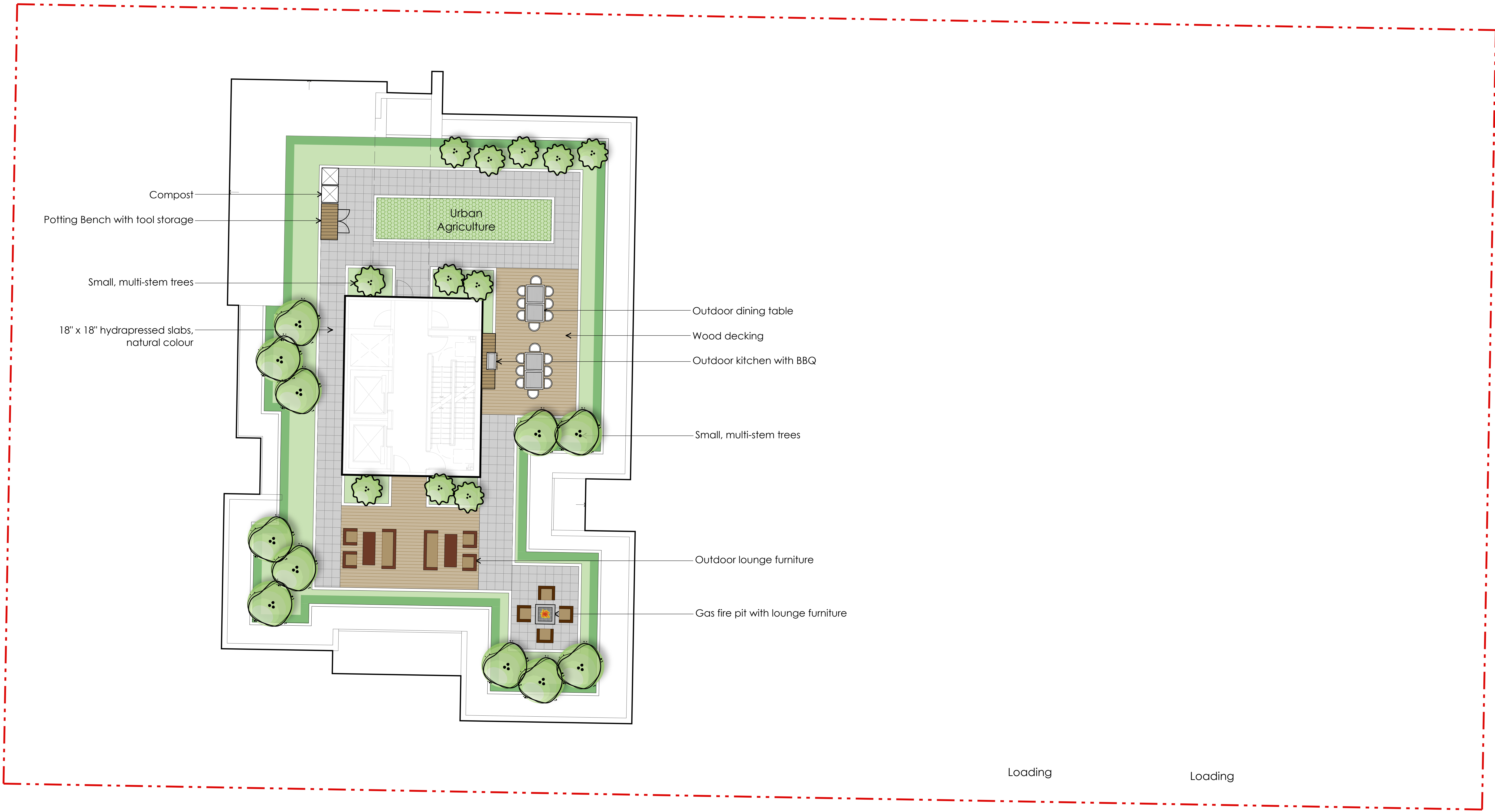
P 604.684.4611
 F 604.684.0577
 www.dkl.bc.ca

DATE: 01 DEC 2016
 SCALE: 1/8" = 1'-0"

DRAWN: MTB
 PROJECT NUMBER: 16134

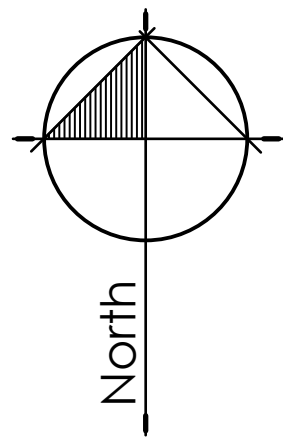


1444 St. Georges Ave Upper Amenity Decks

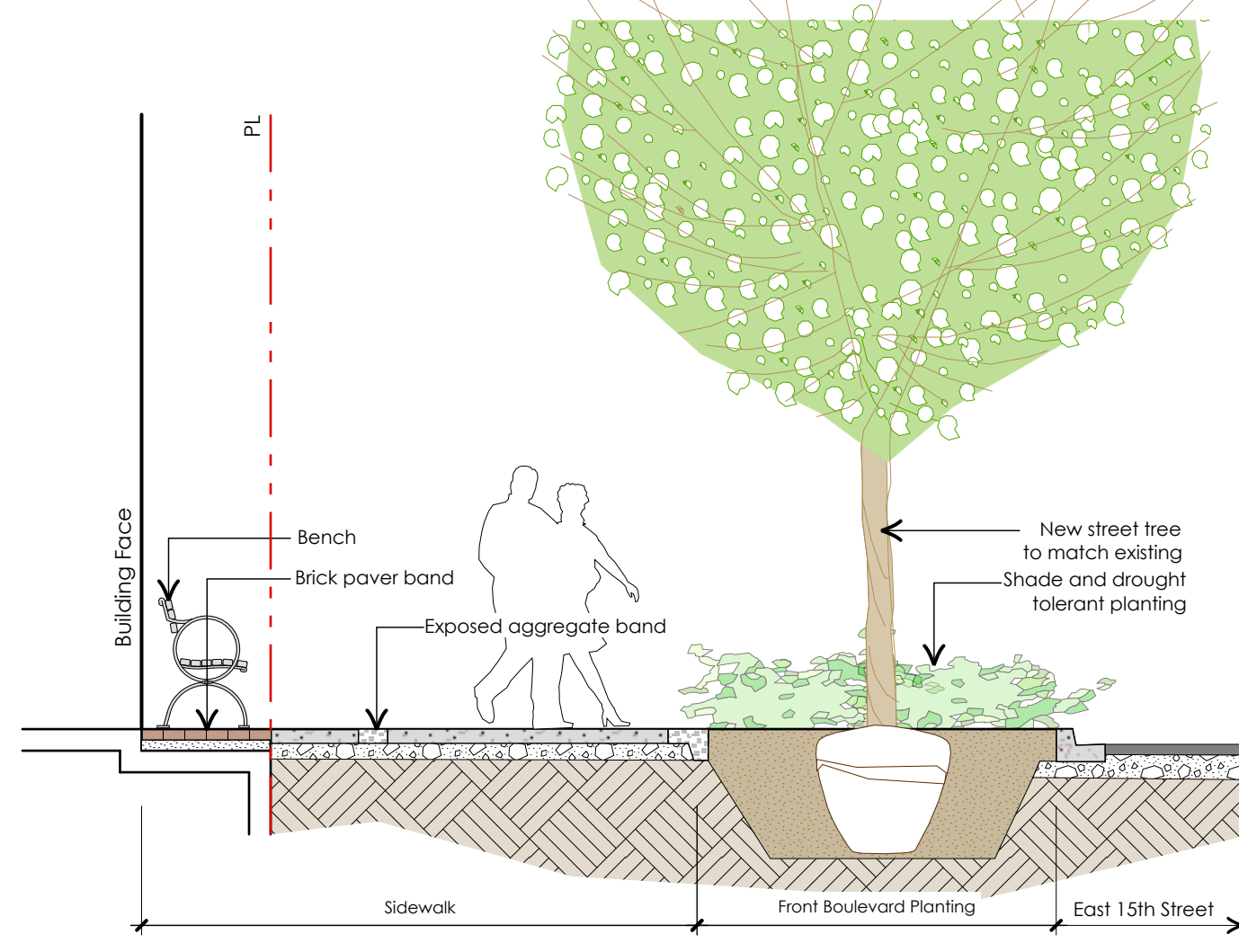


Loading

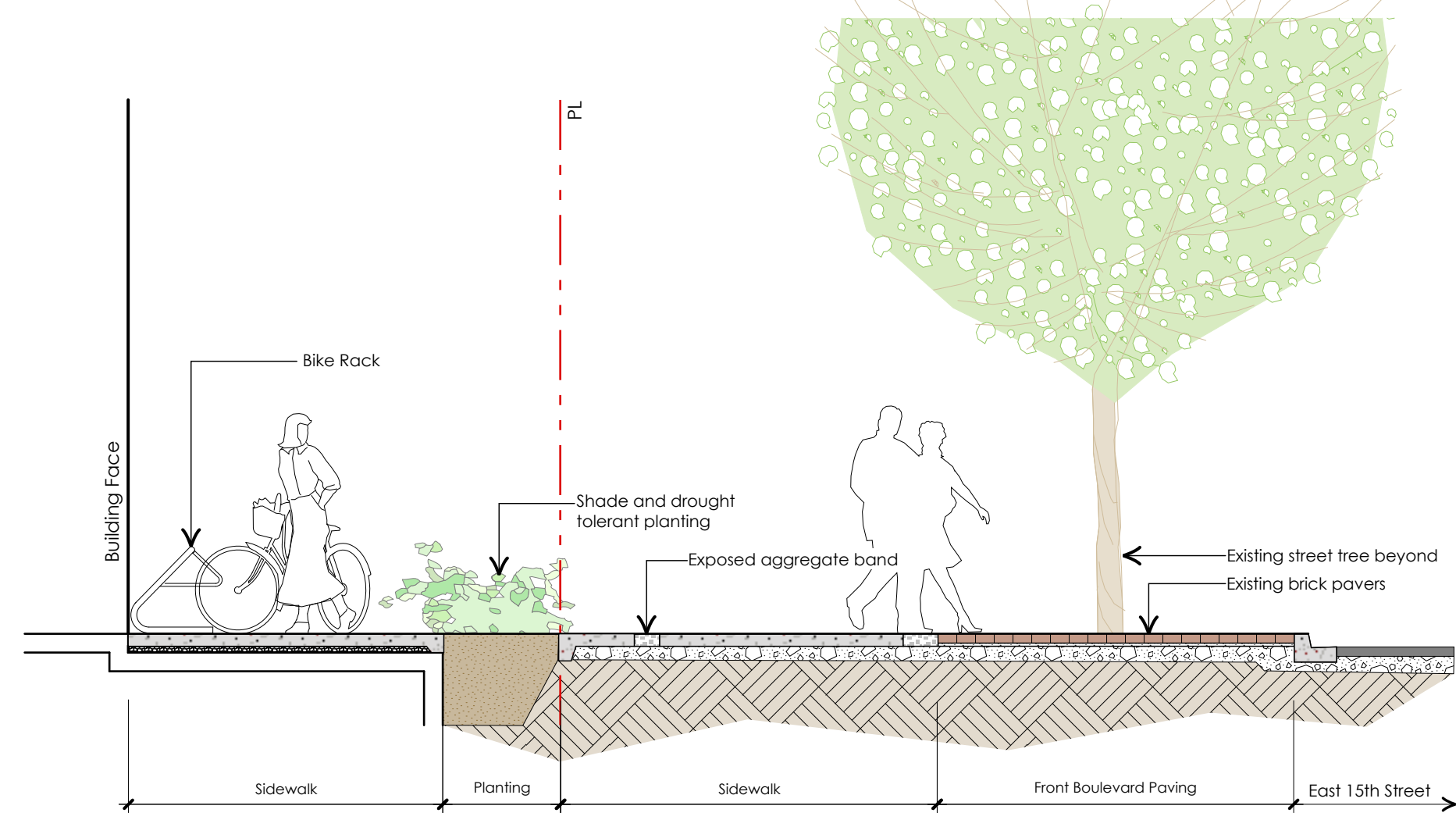
Loading



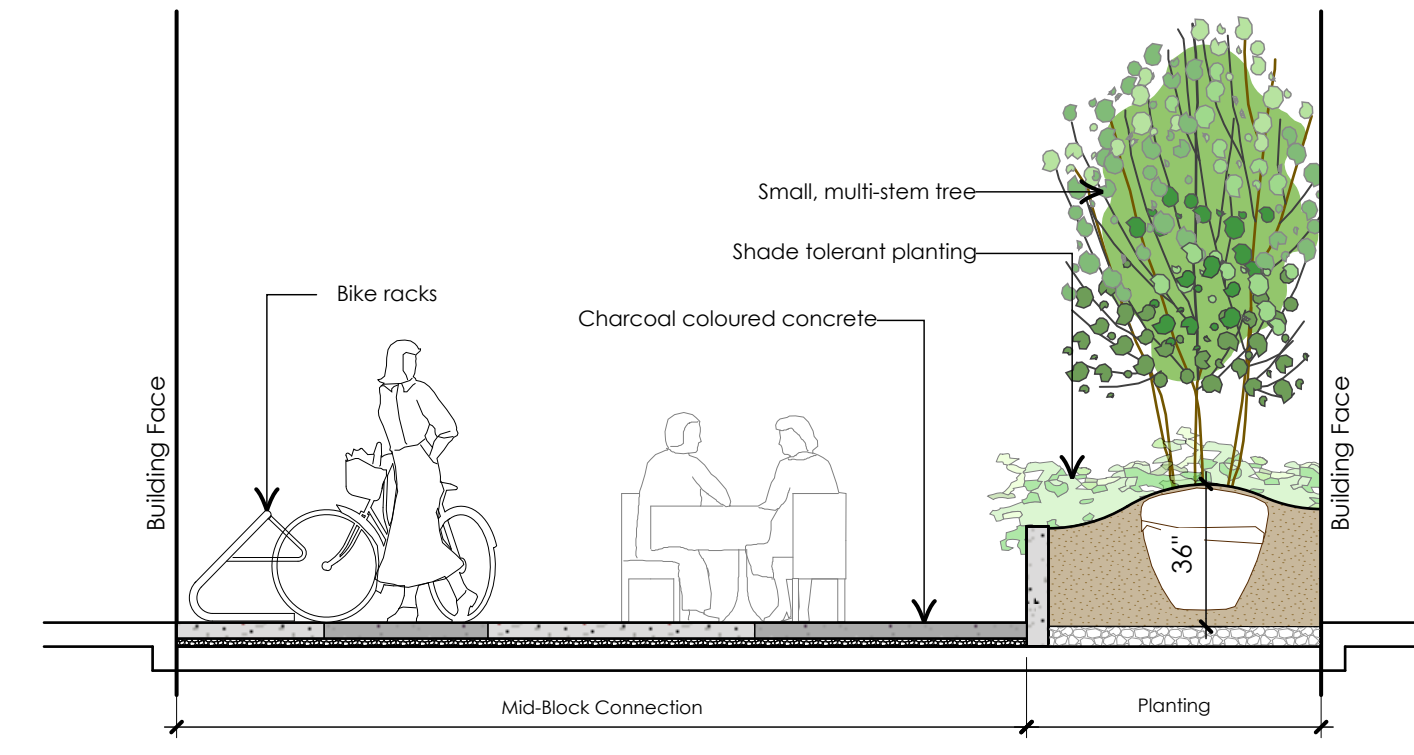
1444 St. Georges Ave Rooftop Landscape Plan



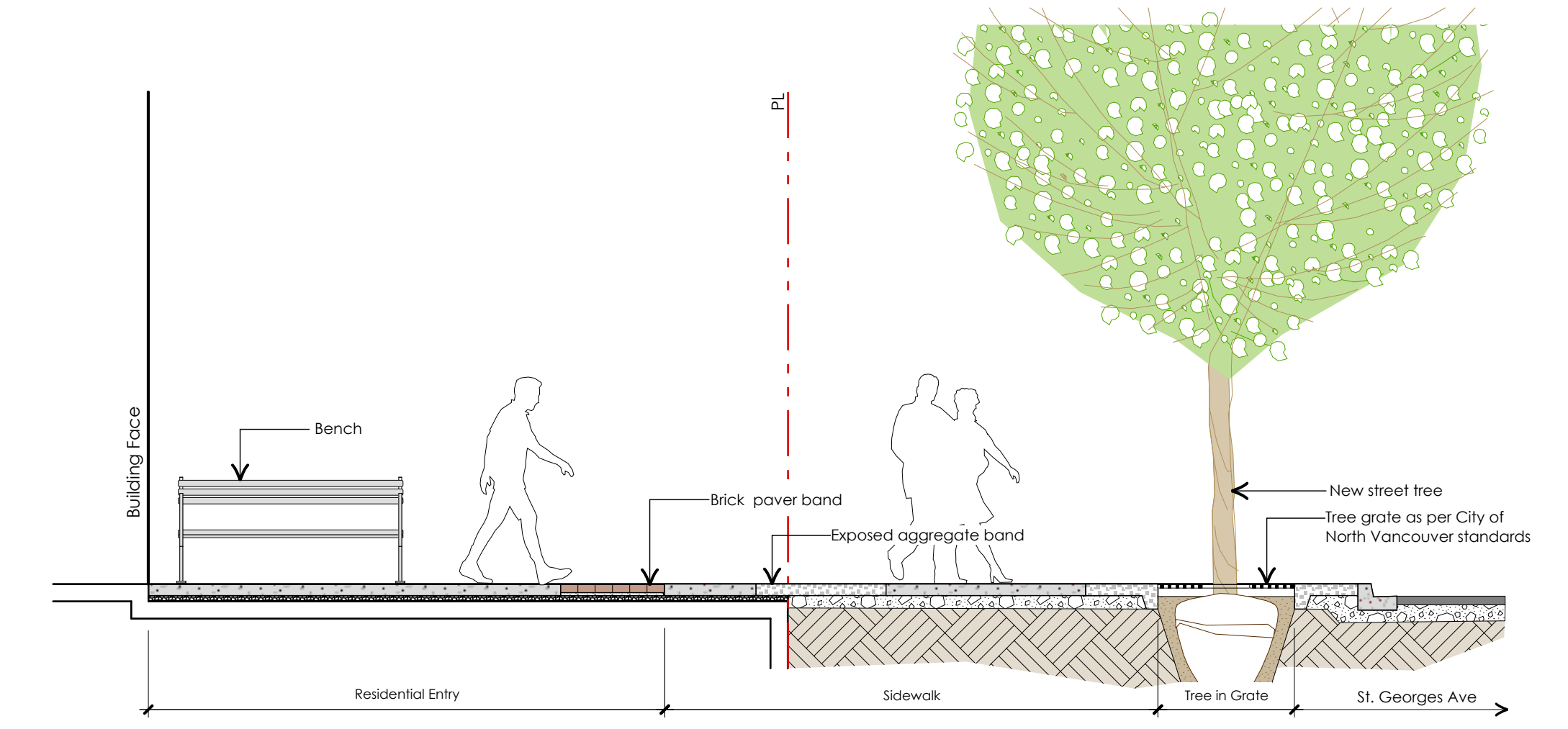
SECTION THROUGH EAST 15TH STREET
Scale 1/4" = 1'-0"



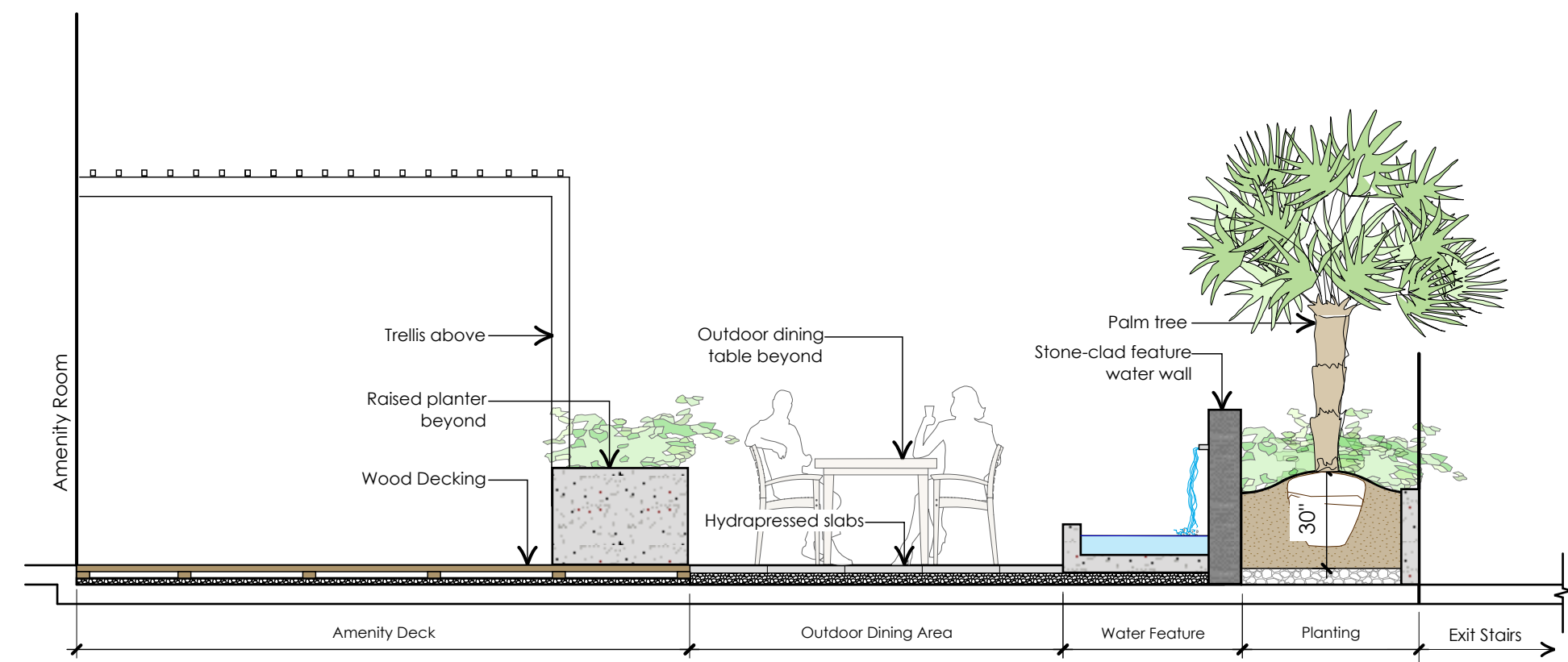
SECTION THROUGH EAST 15TH STREET
Scale 1/4" = 1'-0"



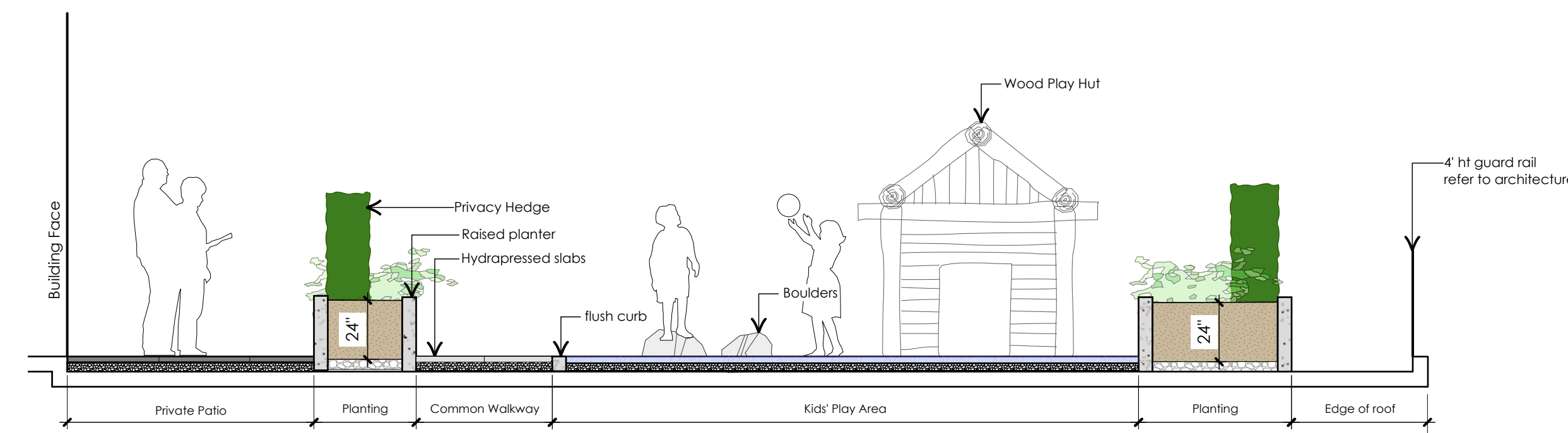
SECTION THROUGH MID-BLOCK THOROUGHFARE
Scale 1/4" = 1'-0"



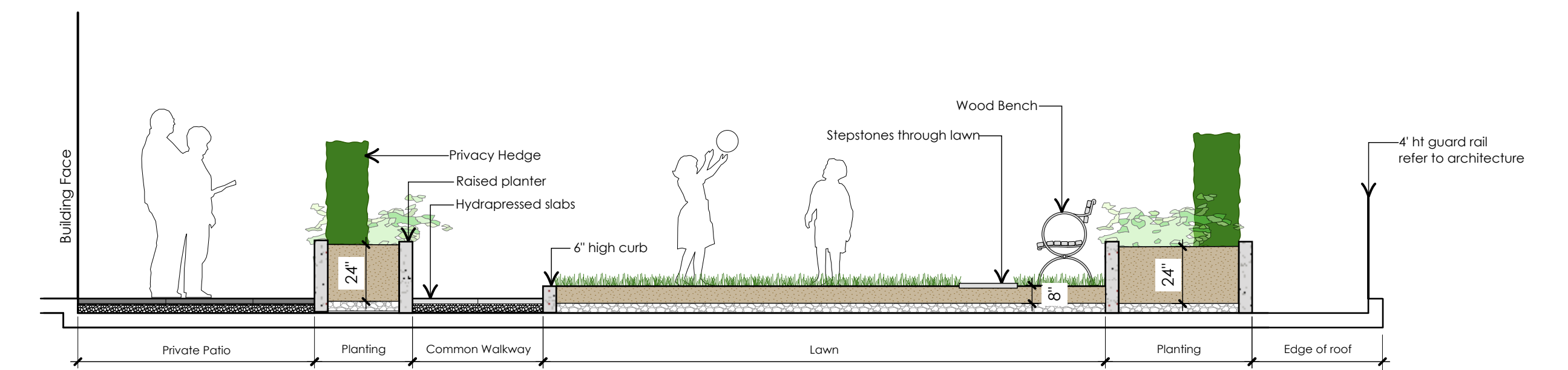
SECTION THROUGH ST GEORGES AVE
Scale 1/4" = 1'-0"



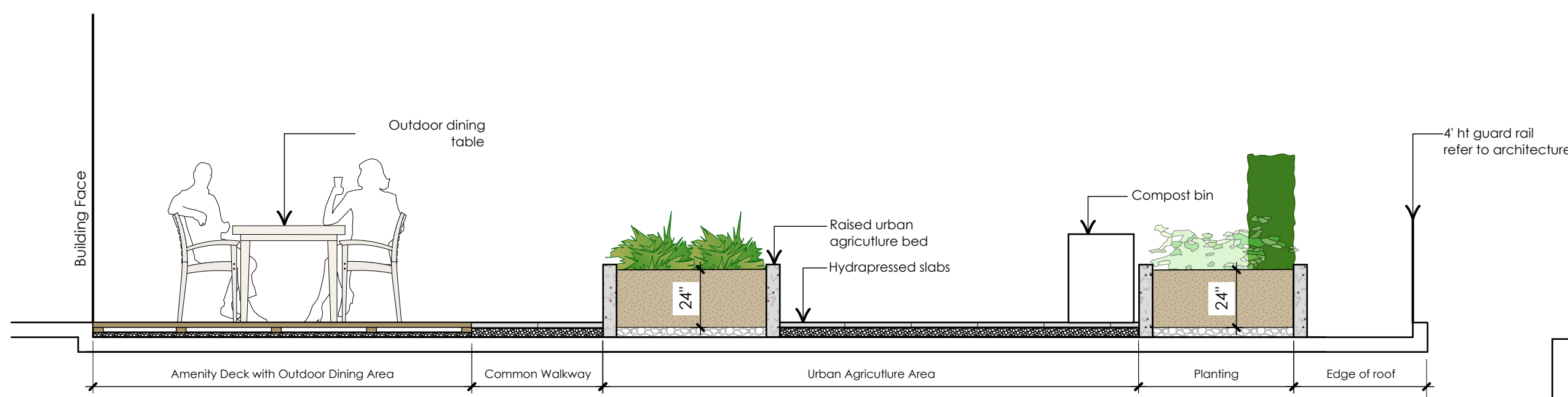
SECTION THROUGH LEVEL 2 AMENITY DECK
Scale 1/4" = 1'-0"



SECTION THROUGH LEVEL 3 AMENITY DECK
Scale 1/4" = 1'-0"



SECTION THROUGH LEVEL 3 AMENITY DECK
Scale 1/4" = 1'-0"

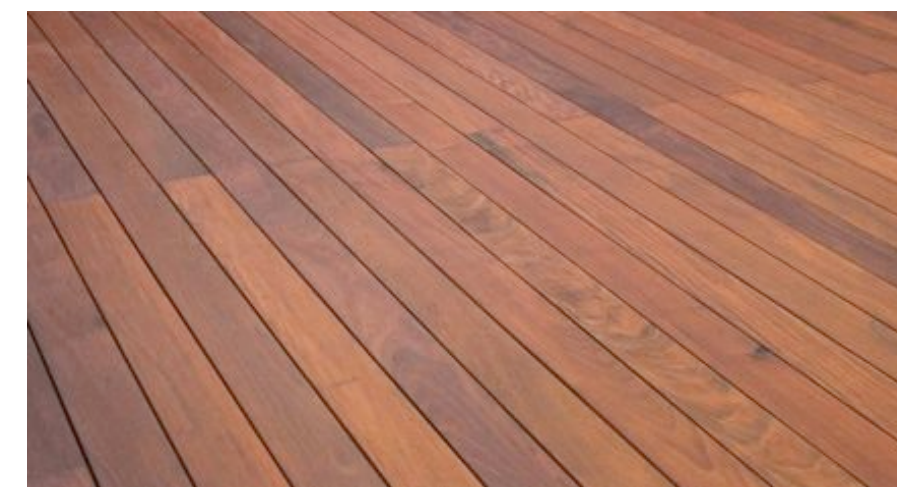


SECTION THROUGH AMENITY DECK
Scale 1/4" = 1'-0"

NOTE: Sections E through H show typical buildup conditions for all amenity decks.

1441 St. Georges Ave Landscape Sections

PRECEDENT IMAGES



IPE Wood decking



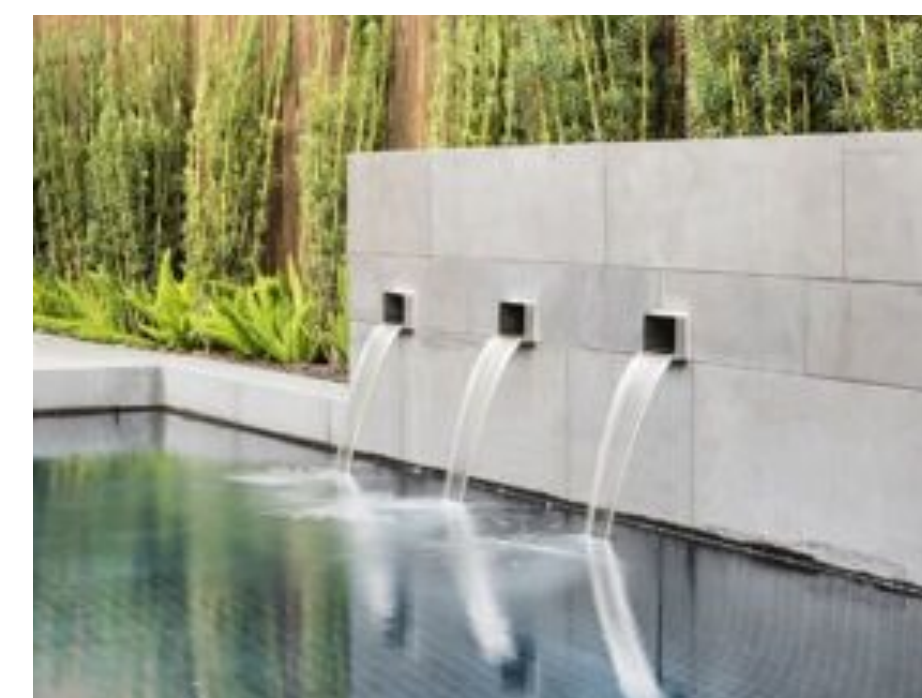
Hydrapressed charcoal slabs



Hydrapressed slabs - natural colour



Shade Tolerant planting



Small water feature with Stone wall



Outdoor kitchen and dining area



Contemporary trellis



Outdoor lounge area with fire pits



Kids' Play area with natural elements



Urban agriculture in raised beds

PLANT LIST

TREES



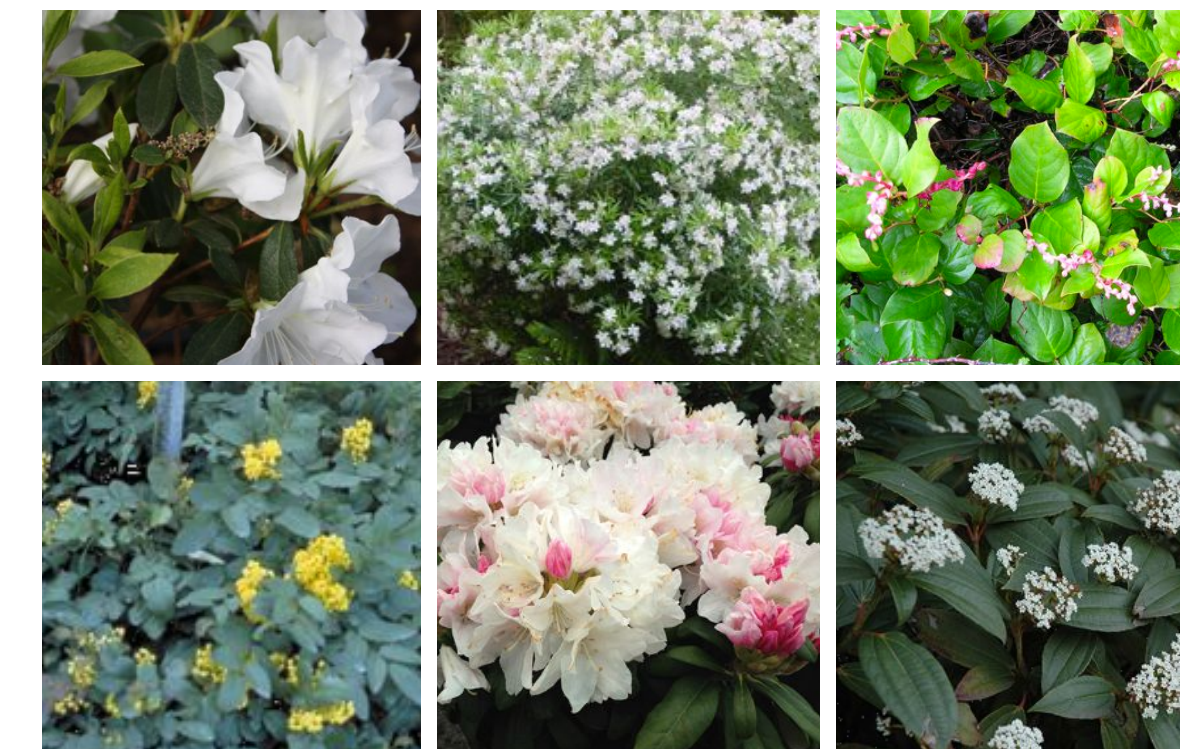
BOTANICAL NAME
Acer circinatum
Acer japonicum 'aconitifolium'
Cornus kousa 'Satomi'
Magnolia 'Galaxy'
Stewartia pseudocamillia
Trachycarpus fortunei

COMMON NAME
 Vine Maple
 Full Moon Japanese Maple
 Dogwood
 Magnolia
 Japanese Stewartia
 Windmill Palm

BIRD/BEE FRIENDLY

 Bird and Bee Friendly
 Bee Friendly

SHRUBS



BOTANICAL NAME
Azalea japonica 'Hino White'
Choisya ternata 'Aztec Pearl'
Cistus x corbariensis
Gaultheria shallon
Mahonia repens
Taxus x media 'Hillii'
Rhododendron 'Yaku Prince'
Sarcococca humilis 'Winter Gem'
Viburnum davidi

COMMON NAME
 Evergreen Azalea
 Mexican Mock Orange
 Rock Rose
 Salal
 Creeping Grape Holly
 Yew Hedge
 Light Pink Rhododendron
 Sweet Box
 David's Viburnum

BIRD/BEE FRIENDLY

 Bee Friendly
 Bee Friendly
 Bee Friendly
 Bird Friendly
 Bird Friendly
 Bee Friendly
 Bee Friendly
 Bird Friendly

GROUNDCOVERS



BOTANICAL NAME
Asarum caudatum
Arctostaphylos uva-ursi
Carex oshimensis 'Everest'
Coreopsis 'Moonlight'
Hakonechloa macra 'Aureola'
Echinacea Purpurea
Heuchera 'Green Spice'
Hosta 'Mouse Ears'
Lavendula agustifolia 'Hidcote Blue'
Liriope muscari 'Big Blue'
Miscanthus 'Little Kitten'
Nepeta faassenii 'Kit Kat'
Polystichum munitum
Stipa tenuissima

COMMON NAME
 Wild Ginger
 Kinnikinnick
 Sedge
 Threadleaf Coreopsis
 Japanese Forest Grass
 Purple Coneflower
 Coral Bells
 Hosta
 Lavender
 Lilyturf
 Dwarf Maiden Grass
 Catmint
 Western Sword Fern
 Mexican Feather Grass

BIRD/BEE FRIENDLY

 Bird Friendly

 Bee Friendly

 Bird and Bee Friendly

 Bee Friendly
 Bee Friendly
 Bee Friendly
 Bird Friendly
 Bee Friendly
 Bird Friendly
 Bird Friendly