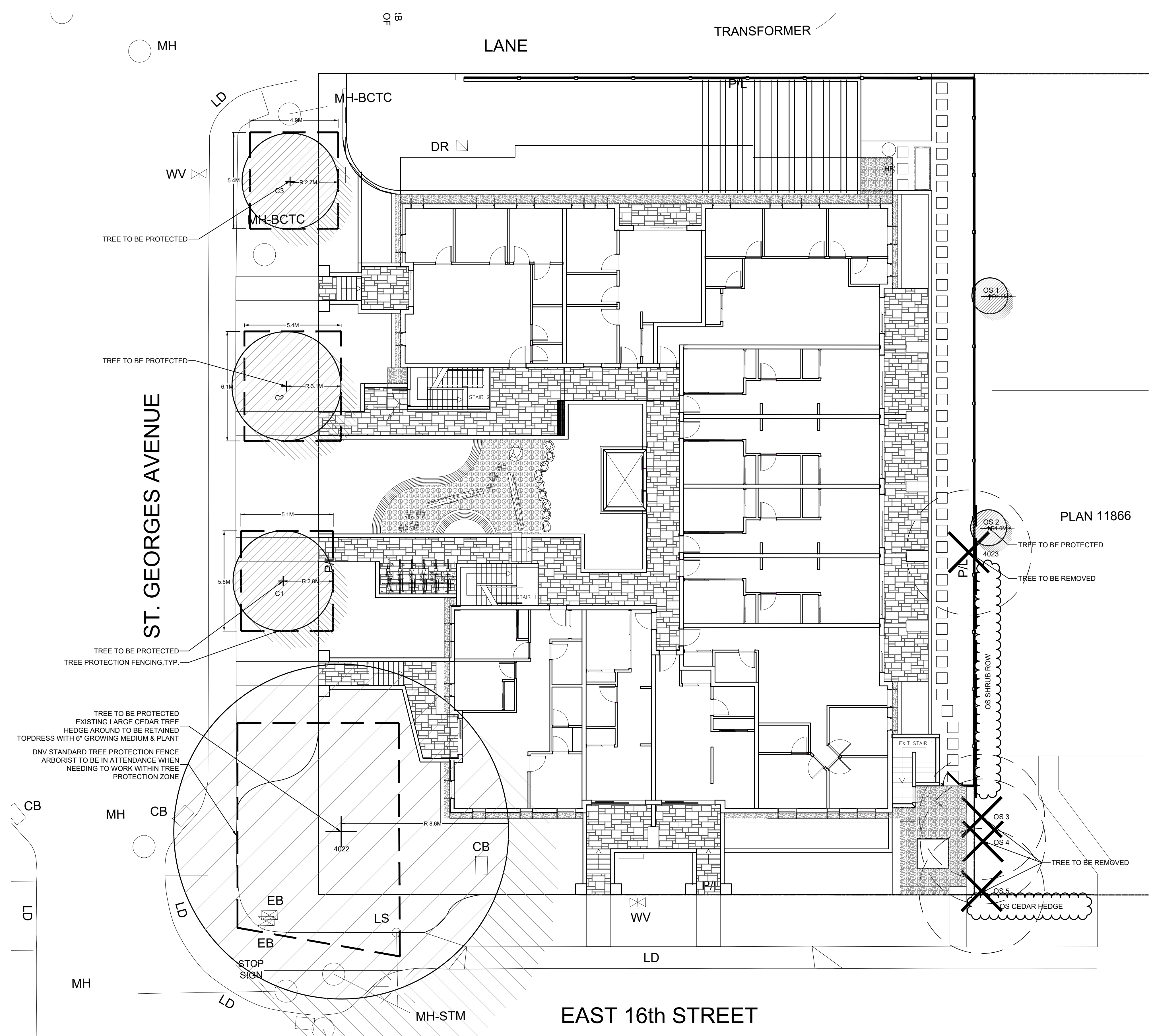
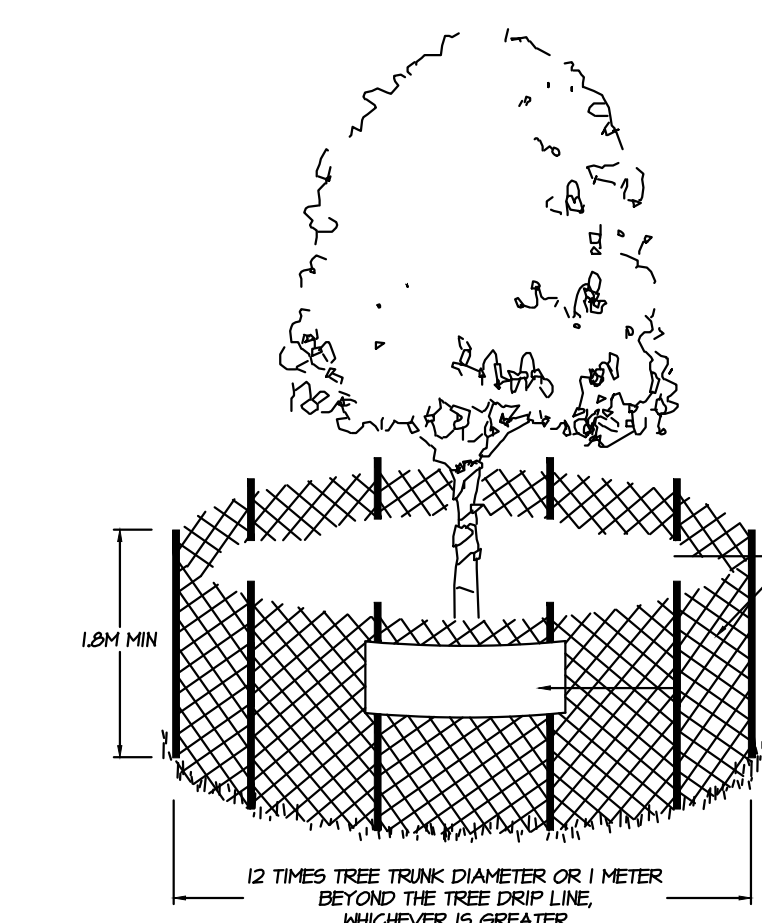


SEAL:



PLAN 11866



- NOTES:
1. A TREE PROTECTION BARRIER SHALL BE INSTALLED AROUND ANY TREE OR GROUP OF TREES BEING RETAINED BEFORE ANY WORK COMMENCES, AND REMAIN IN PLACE UNTIL WRITTEN APPROVAL IS RECEIVED FROM THE FORESTRY TECHNOLOGIST FOR ITS REMOVAL.
 2. A TREE PROTECTION BARRIER SHALL BE APPROVED BY THE FORESTRY TECHNOLOGIST BEFORE ANY WORK COMMENCES.
 3. NO WORK IS PERMITTED WITHIN THE ZONE EXCEPT IN ACCORDANCE WITH PLANS AND PROCEDURES AUTHORIZED BY A TREE PERMIT.
 4. ALL TREES BEING RETAINED SHALL BE APPROPRIATELY MAINTAINED AND PROTECTED FROM EVERY TYPE OF DAMAGE.

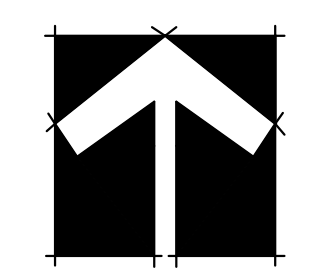
PROTECTIVE FENCING SHALL BE CONSTRUCTED OF CHAIN LINK FENCING FIRMLY SECURED, AS APPROVED BY THE FORESTRY FOR BARRIERS ALONG STREAM CORRIDORS, WETLANDS, OR THE WATERFRONT, OR OF PLANKS FASTENED TO WOODEN STAKES OR OTHER FORM OR BARRIER SATISFACTORY TO THE ENVIRONMENTAL PROTECTION OFFICER.

SIGNAGE SHALL BE PLACED ON THE PROTECTIVE BARRIER INDICATING THAT THE AREA WITHIN THE BARRIER IS A PROTECTION ZONE AND THAT NO ENCROACHMENT IS PERMITTED INTO THE ZONE.

1 TREE PROTECTION FENCING
N.T.S.

NOTE:
WORK IN TPZ TO BE UNDER ARBORIST SUPERVISION. CONTACT PROJECT ARBORIST "DIAMOND HEAD" AT 604.733.4886 WITHIN 3 WORKING DAYS BEFORE STARTING CONSTRUCTION IN TPZ.

- TREE TO BE REMOVED
- TREE TO BE RETAINED
- TREE PROTECTION ZONE & FENCING
- HEDGE TO BE RETAINED



NO.	DATE	REVISION DESCRIPTION	DR.
3	22.SEP.15	NEW SITE PLAN	WZ
2	22.SEP.9	TREE MANAGEMENT PLAN	WZ

CLIENT:

PROJECT:
RENTAL APARTMENT BLDG.

**1612 ST. GEORGE
NORTH VANCOUVER, B.C.**

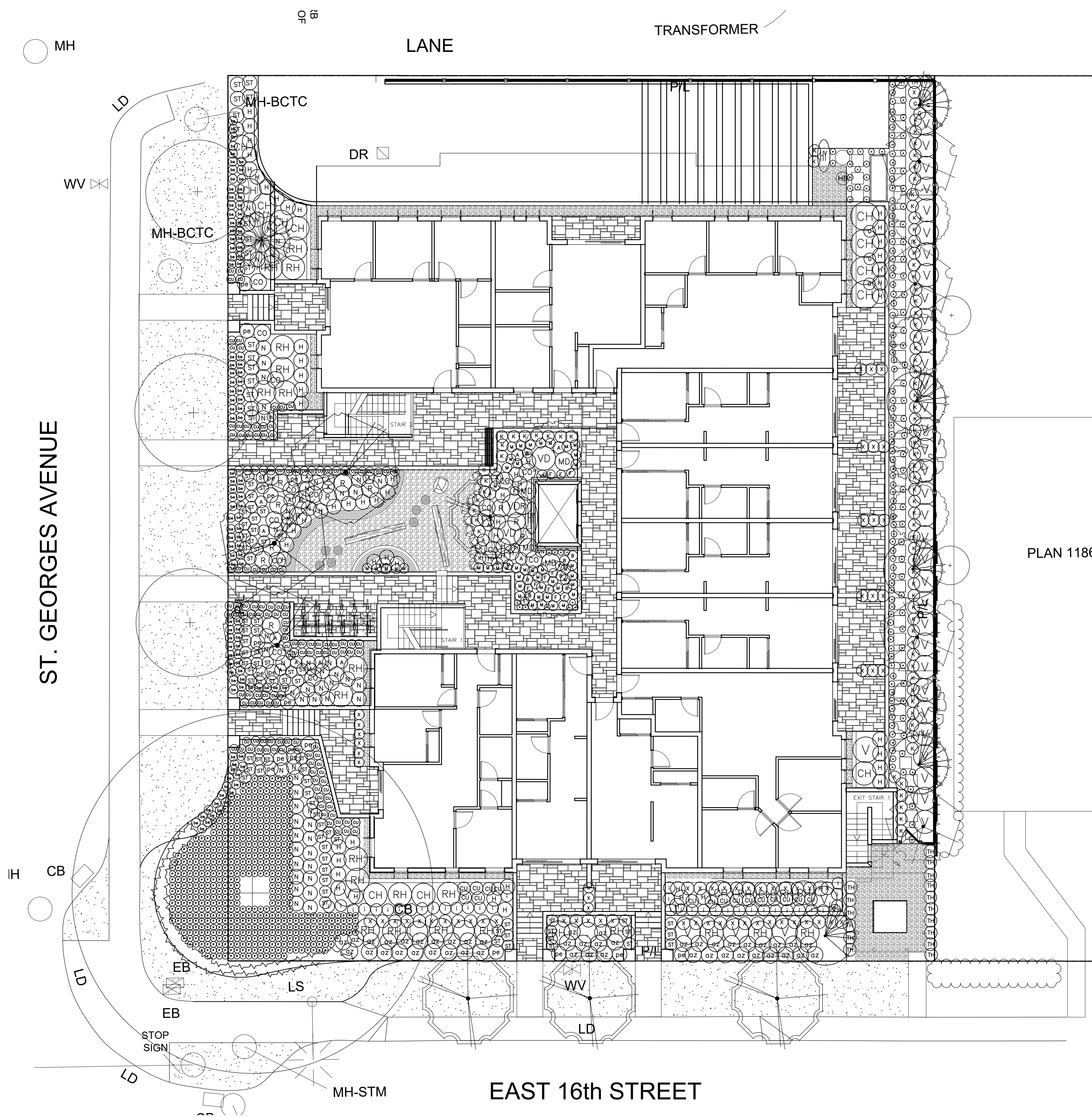
DRAWING TITLE:
**TREE MANGAEMENT
PLAN**

DATE: 21.NOV.24 DRAWING NUMBER:
SCALE: 1"=10'-0"
DRAWN: JR / PC
DESIGN: PC
CHK'D: PC

L2

OF 3

SEAL:



PLAN 1186

PLANT SCHEDULE			PMG PROJECT NUMBER: 21-203	
KEY	QTY	BOTANICAL NAME	COMMON NAME	PLANTED SIZE / REMARKS
SHRUB				
46		AZALEA JAPONICA 'HINO WHITE'	AZALEA; HARDY WHITE	#2 POT; 25CM
68		BUXUS SEMPERVIRENS GREEN VELVET	BOXWOOD	#3 POT; 40CM
15		CHOISYA TERNATA	MEXICAN MOCK ORANGE	#3 POT; 50CM
15		CORNUS SERICEA 'KELSEY'	DWARF KELSEY DOGWOOD	#2 POT; 50CM
46		MAHONIA NERVOSA*	LONGLEAF MAHONIA	#1 POT; 20CM
5		MAHONIA x MEDIA CHARITY	CHARITY MAHONIA	#3 POT; 50CM
59		NANDINA DOMESTICA 'GULF STREAM'	HEAVENLY BAMBOO; DWARF	#1 POT; 20CM
14		RHODODENDRON 'BLUE TIT'	DWARF RHODODENDRON; BLUE-LAVENDER	#3 POT; 30CM
24		RHODODENDRON 'PATTY BEE'	DWARF RHODODENDRON; YELLOW	#3 POT; 30CM
3		SPIRAEA x VON HOUTTEI	BRIDAL WREATH SPIRAEA	#3 POT; 60CM
19		THUJA OCCIDENTALIS 'SMARAGD'	EMERALD GREEN CEDAR	1.8M HT; B&B
39		VACCINIUM OVATUM	EVERGREEN HUCKLEBERRY	#2 POT; 50CM #3 POT; 60CM
3		VIBURNUM DAVIDII	DAVID'S VIBURNUM	#2 POT; 30CM
GRASS				
17		PENNISETUM ALOPECUROIDES	FOUNTAIN GRASS	#1 POT
VINE				
2		CLEMATIS TANGUTICA 'GOLDEN HARVEST'	GOLDEN CLEMATIS	#2 POT; 60CM STAKED
		HYDRANGEA PETIOLARIS	CLIMBING HYDRANGEA	#2 POT; 40CM STAKED
PERENNIAL				
22		ANEMONE x HYBRIDA 'WHIRLWIND'	JAPANESE ANEMONE; SEMI-DOUBLE WHITE	15CM POT
111		BERGENIA CORDIFOLIA	HEARTLEAF BERGENIA; ROSE PINK	11CM POT
158		COREOPSIS VERTICILLATA 'MOONBEAM'	THREADLEAF COREOPSIS; YELLOW	15CM POT; 45CM O.C.
14		FUCHSIA MAGELLANICA 'RICCARTONI'	FUSCHIA	15CM POT
64		HELLEBORUS x HYBRIDUS- 'VANCOUVER SERIES'	LENTEN ROSE	15 CM POT
36		IBERIS SEMPERVIRENS	EVERGREEN CANDYTUFT	9CM POT
90		SEDUM TELEPHIUM 'HERBSTFREUDE'	AUTUMN JOY STONECROP	15CM POT
GC				
81		ARCTOSTAPHYLOS UVA-URSI*	KINNICKINICK	#1 POT; 20CM
150		GALIUM ODORATUM	SWEET WOODRUFF	9CM POT
6		GAULTHERIA SHALLON*	SALAL	#1 POT; 20CM
565		PACHYSANDRA TERMINALIS	JAPANESE SPURGE	9CM POT

NOTES: * PLANT SIZES IN THIS LIST ARE SPECIFIED ACCORDING TO THE BC LANDSCAPE STANDARD AND CANADIAN LANDSCAPE STANDARD, LATEST EDITION. CONTAINER SIZES SPECIFIED AS PER CNLA STANDARD. BOTH PLANT SIZE AND CONTAINER SIZE ARE THE MINIMUM ACCEPTABLE SIZES. * REFER TO SPECIFICATIONS FOR DEFINED CONTAINER MEASUREMENTS AND OTHER PLANT MATERIAL REQUIREMENTS. * SEARCH AND REVIEW: MAKE PLANT MATERIAL AVAILABLE FOR OPTIONAL REVIEW BY LANDSCAPE ARCHITECT AT SOURCE OF SUPPLY. AREA OF SEARCH TO INCLUDE LOWER MAINLAND AND FRASER VALLEY. * SUBSTITUTIONS: OBTAIN WRITTEN APPROVAL FROM THE LANDSCAPE ARCHITECT PRIOR TO MAKING ANY SUBSTITUTIONS TO THE SPECIFIED MATERIAL. UNAPPROVED SUBSTITUTIONS WILL BE REJECTED. ALLOW A MINIMUM OF FIVE DAYS PRIOR TO DELIVERY FOR REQUEST TO SUBSTITUTE. SUBSTITUTIONS ARE SUBJECT TO BC LANDSCAPE STANDARD AND CANADIAN LANDSCAPE STANDARD - DEFINITION OF CONDITIONS OF AVAILABILITY. * ALL LANDSCAPE MATERIAL AND WORKMANSHIP MUST MEET OR EXCEED BC LANDSCAPE STANDARD AND CANADIAN LANDSCAPE STANDARD LATEST EDITION. * ALL PLANT MATERIAL MUST BE PROVIDED FROM CERTIFIED DISEASE FREE NURSERY. * BIO-SOLIDS NOT PERMITTED IN GROWING MEDIUM UNLESS AUTHORIZED BY LANDSCAPE ARCHITECT.

NO.	DATE	REVISION DESCRIPTION	DR.
3	22.SEP.15	NEW SITE PLAN	WZ
2	22.SEP.9	TREE MANAGEMENT PLAN	WZ

CLIENT:

PROJECT:
RENTAL APARTMENT BLDG.

1612 ST. GEORGE
NORTH VANCOUVER, B.C.

DRAWING TITLE:

SHRUB PLAN

DATE: 21.NOV.24 DRAWING NUMBER:
SCALE: 1"=10'-0"
DRAWN: JR / PC
DESIGN: PC
CHK'D: PC

L3

OF 3

