

viewise
Landscape Design Inc.
www.viewiselandscapedesign.com

2546 Dalles Ct. Coquitlam
BC Canada V3E 2P1
tel: 854-942-8990
e: cherie@viewiselandscapedesign.com

Consultants:

HASSAN MOAYERI
ARCHITECT
P.L.L.C.

Revisions:

1. Rezoning Submission - Sept. 15, 2020



Project:
273&279 EAST 6TH STREET,
NORTH VANCOUVER, BC

Title:
OVERALL LANDSCAPE PLAN

Drawn: HC
Checked:
Scale: 1:100

Project No: 20.001
Sheet No: L 0.0



Drawing List

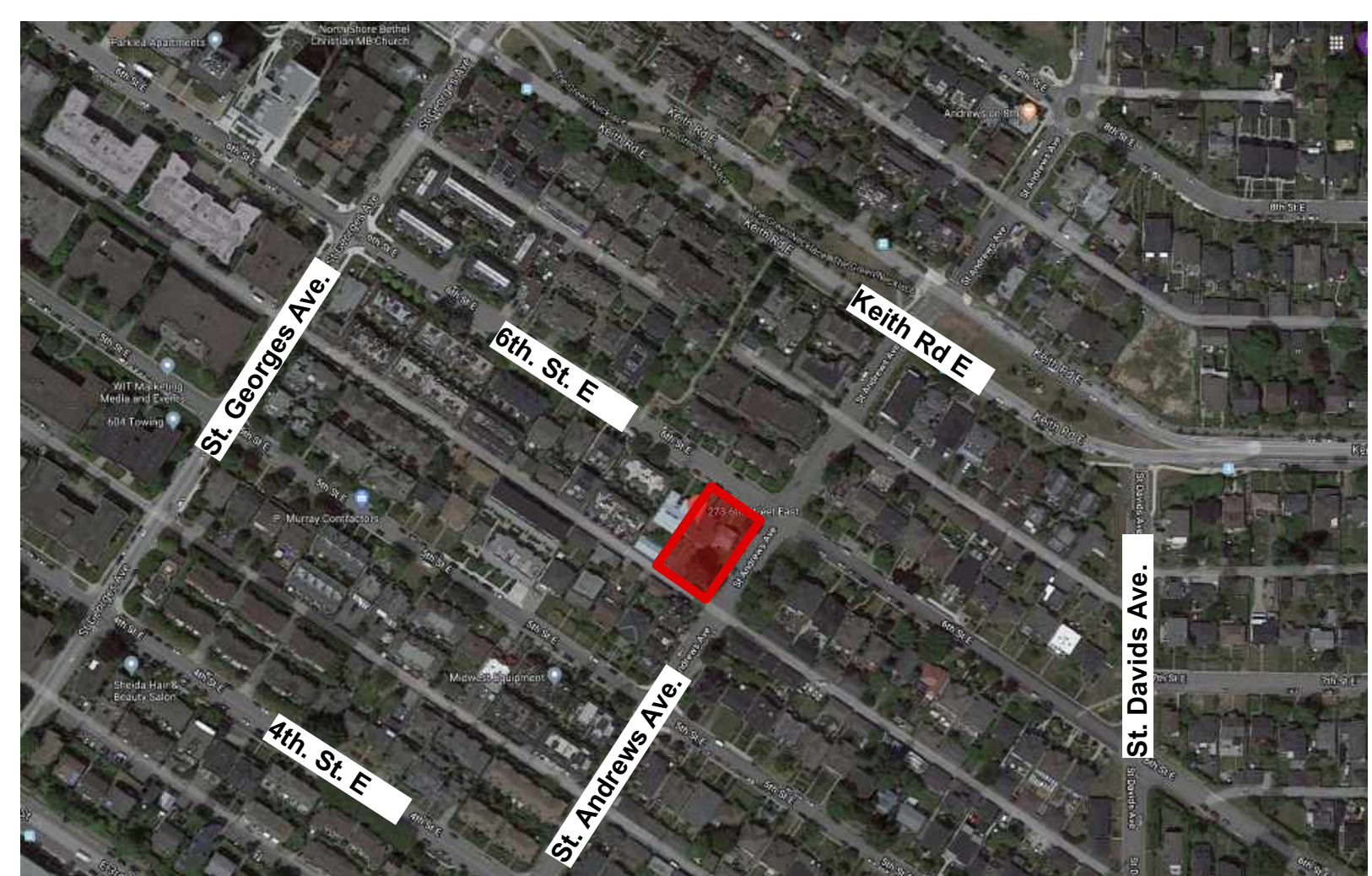
- L0.0 - Overall Landscape Plan
- L1.0 - Tree Management Plan
- L2.1 - Grading & Layout - 1st Floor
- L2.2 - Grading & Layout - 2nd Floor
- L2.3 - Grading & Layout - 3rd Floor
- L3.1 - Planting Plan - 1st Floor
- L3.2 - Planting Plan - 2nd Floor
- L3.3 - Plant Imageboard
- L4.1 - Lighting Plan - 1st Floor
- L4.2 - Lighting Plan - 2nd Floor
- L5.1 - Sections
- L6.0 - Materials

General Notes:

- 1: All walls to be inspected and approved by geotech and structural engineer.
- 2: Ensure positive drainage behind all walls and throughout site.
- 3: All walls to conform to City of North Vancouver bylaws and guidelines.
- 4: All landscape works (including boulevard areas) to be automatically irrigated.
- 5: Where soft landscape areas meet building foundation wall, 12-18" wide gravel drain strip to be installed at landscape grade.
- 6: Paving Surfaces: (or to be decided by the client)
 - a) Stair Landings: Concrete stairs and landing
 - b) Decks and Patios: AquaPave, Aristokrat Porcelain by Abbotsford Concrete Products
- 7: Guard-rails to be installed where required by code.

NOTE:

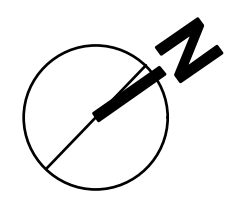
1. All retaining walls to be approved and specified by structural engineer to meet North Vancouver's building code, including wall height.
2. All drainage behind walls and overall site to be designed and approved by mechanical / civil engineer.
3. Final layout of all walls to be approved by owner.



Location



Context



viewise
Landscape Design Inc.
www.viewiselandscapedesign.com

2546 Dallas Ct. Coquitlam
BC Canada V3E 2P1
tel: 604-942-8990
e: cherie@viewiselandscapedesign.com

Consultants:
HASSAN MOAYERI
ARCHITECT

Revisions:
1. Rezoning Submission - Sept. 15, 2020

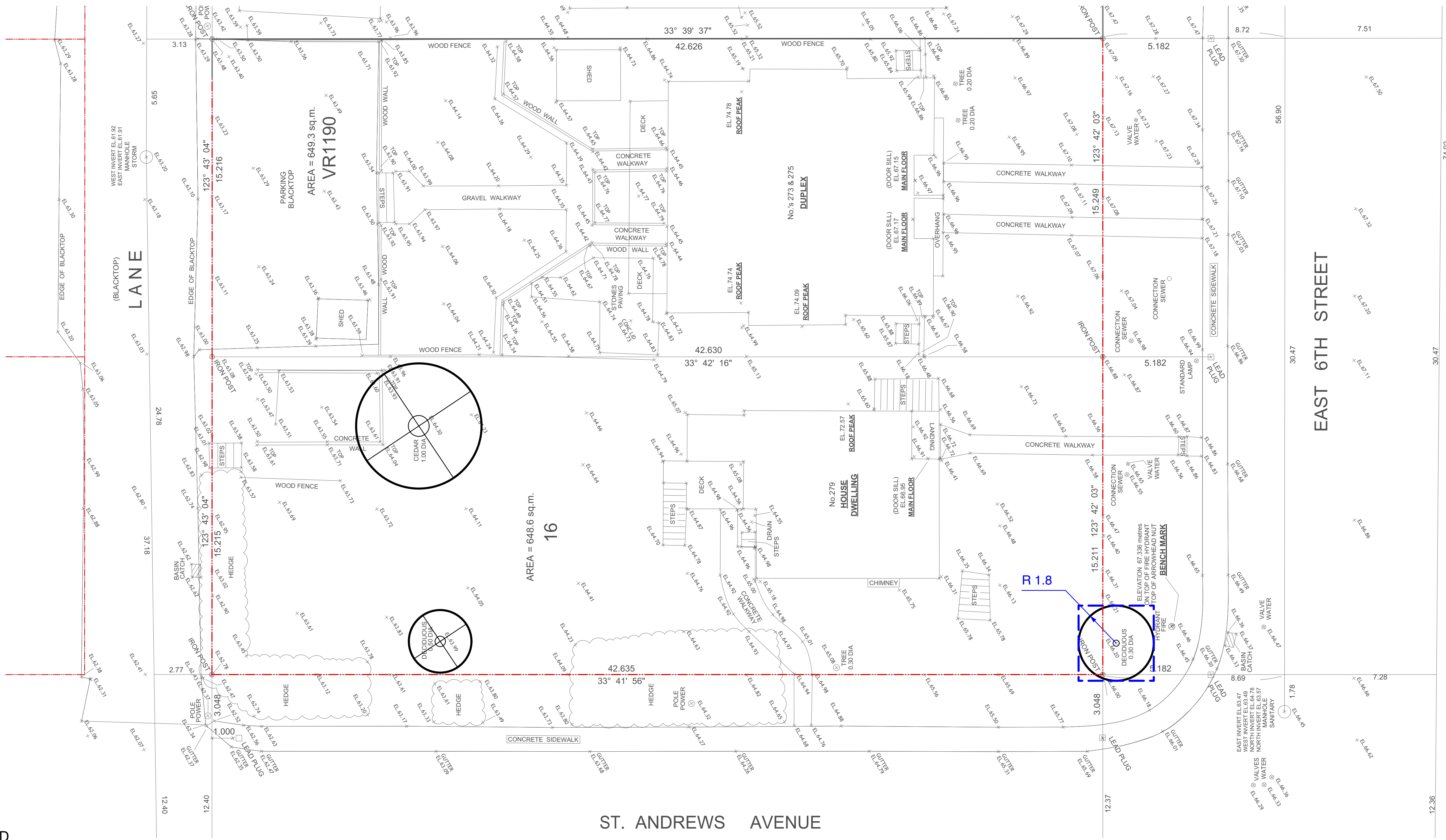


Project:
273&279 EAST 6TH STREET,
NORTH VANCOUVER, BC

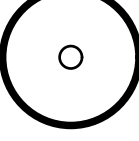
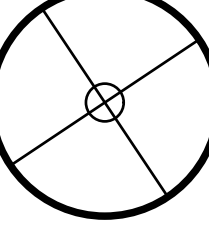
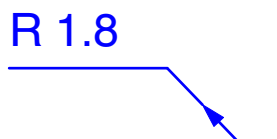
Title:
TREE MANAGEMENT PLAN

Drawn: HC
Checked:
Scale: 1:100

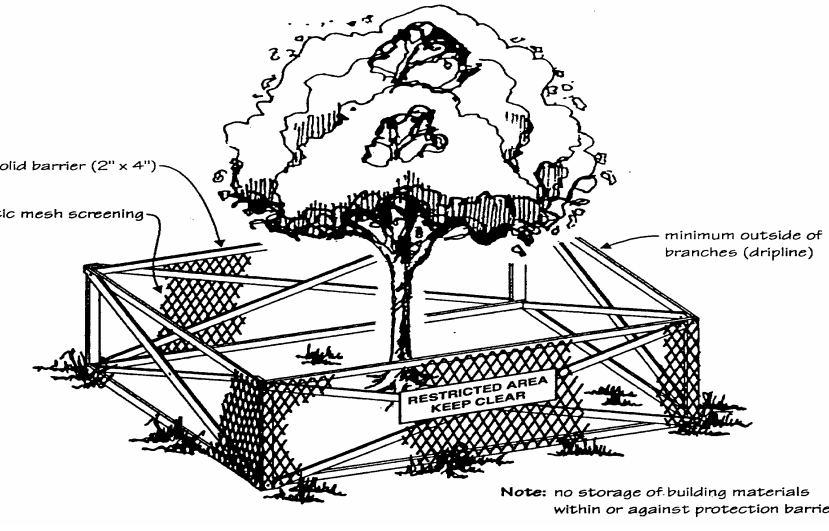
Project No: 20.001
Sheet No: L 1.0



LEGEND

-  Tree to be Retained
-  Tree to be Removed
-  CRZ Radius

 Proposed Tree Protection Fence
see arborist report for details



Tree Protection Fence

Schedule A

Protection Barrier Distance from Tree
Section 1.2

TRUNK DIAMETER	MINIMUM PROTECTION REQUIRED AROUND TREE
Trunk diameter	Distance from trunk
20 cm	1.2 m
25	1.5
30	1.8
35	2.1
40	2.4
45	2.7
50	3.0
55	3.3
60	3.6
75	4.5
90	5.0
100	6.0

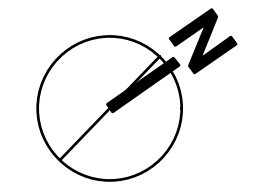
General Construction Notes:

Any permitted tree removal(s) must be performed by qualified professional to avoid contravention of Work Safe BC regulations.

No grade changes are to occur within the Critical Root Zones of any retained trees.

Construction materials are not to be stored within the Tree Protection Zones (TPZ) of trees to be retained, and TPZ fencing is to remain intact for the entire construction process. Signage must be clearly posted on each side of the barrier indicating 'TREE PROTECTION ZONE - DO NOT ENTER OR MODIFY'. Consult Arborist (Mountain Maple) for any TPZ barrier issues.

Copyright reserved. This drawing and design is the property of Viewise Landscape Design Inc. and may not be used without L1000000. Architects shall carry out the responsibility. In all dimensions on the job site, the contractor shall be responsible for any changes made on site.



viewrise
Landscape Design Inc.
www.viewriselandscape.com

2546 Dallas Ct. Coquitlam
BC Canada V3E 2P1
tel: 604-942-8990
e: cherie@viewriselandscape.com

Consultants:

HASSAN MOAYERI
ARCHITECT
P.L.L.C. 1000 - 1000 BROADWAY
VANCOUVER, BC V6Z 2E6

Revisions:

1. Rezoning Submission - Sept. 15, 2020



Project:
273&279 EAST 6TH STREET,
NORTH VANCOUVER, BC

Title:
LAYOUT AND GRADING PLAN
BASEMENT FLOOR

Drawn: HC
Checked:
Scale: 1:100

Project No: 20.001
Sheet No: L 2.1



asphalt back lane typ.
driveway to parking lot typ.
grooved concrete ramp
planter with metal railing typ.
back lane entrance typ.
basement level deck, AquaPaver Venetian Cobble Series typ. colour:Granite Blend
property typ.
concrete stairs typ.
planter with railing typ.
letdown typ. see civil drawings
lawn typ. see civil drawings

concrete stairs to the 1st level typ.
planter, concrete retaining wall typ. 1st floor deck above typ.
planter typ. concrete stairs typ.
concrete retaining wall typ. concrete sidewalk typ. see civil drawings for details
basement level deck, AquaPaver Venetian Cobble Series typ. colour:Granite Blend
basement main entrance typ.
planting area typ.
street light typ. see civil drawings for details
sawcut existing asphalt for new services. see civil drawings for details
metal railing typ.
sawcut existing asphalt for new services. see civil drawings for details
property line typ.
concrete planter typ.
retaining wall with metal railing typ.
concrete stairs typ.
curb and gutter typ. see civil drawings for details.
letdown typ. see civil drawings for details.

concrete ramp typ.
lawn typ.
sidewalk typ. see civil drawing for details
drive way typ.
retaining wall with metal railing typ.
4'ht. hedge typ.
curb and gutter typ. see civil drawings for details
concrete ramp typ.

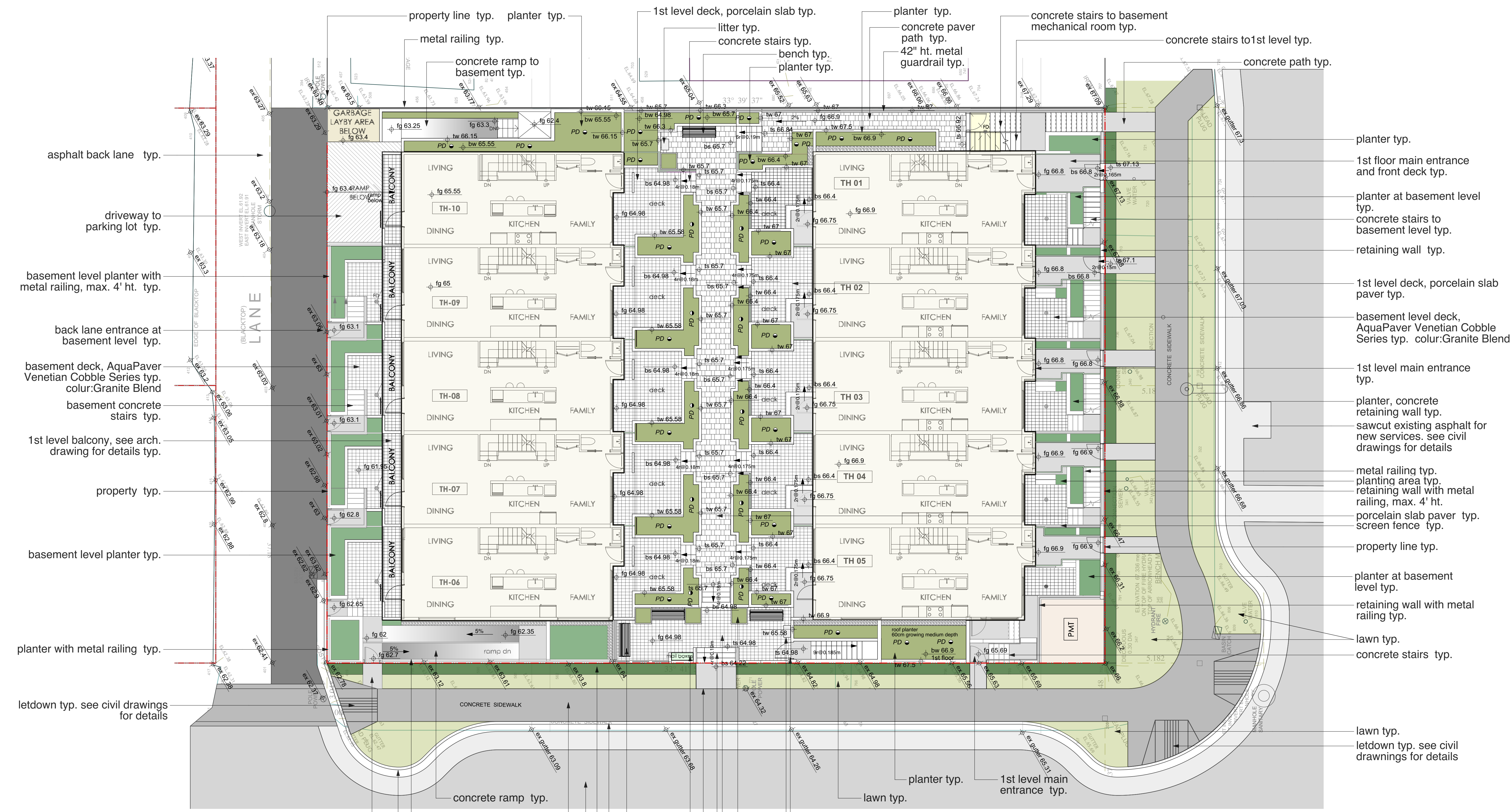
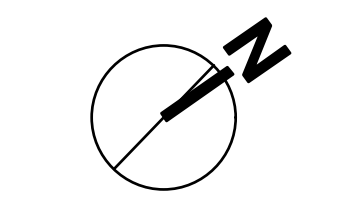
- General Notes:**
- All landscape works (including boulevard areas) to be automatically irrigated
 - Where soft landscape areas meet building foundation wall, 12" wide gravel drain strip to be installed at landscape grade.
 - Paving Surfaces: (or to be decided by the client)
 - Stair Landings: C.I.P concrete. Colour: Light Grey (or equivalent);
 - Patios: AquaPave, Aristokrat Porcelain by Abbotsford Concrete Products
 - Guard-rails to be installed where required by code.
 - Catch Basin and Area Drain, refer to the arch. drawings.
 - Off site grading refer to the civil drawings.

Legend-Grading

ex 79.1	Existing Grade
fg 79.1	Proposed Grade
tw 79.1	Proposed Top of Wall Grade
bw 79.67	Proposed Bottom of Wall Grade
tc 79.71	Proposed Top of Curb Grade
bc 79.56	Proposed Bottom of Curb Grade
PD ↓ lp 80.38	Planter Drain / Low Point
AD ↓ lp 80.38	Area Drain / Low Point
LB ↓ lp 80.38	Lawn Basin / Low Point
CB ↓ lp 80.38	Catch Basin / Low Point
2%	Slope

Legend-Layout

	Property Line
	Guardrail on Top of Retaining Wall
	Concrete Wall
	Concrete Wall/Curb
	Drain Strip / Decorated Pebble
	Lower Patio Paver (HydraPressed paver) Abbotsford Concrete Products Hydrapressed Paver Pattern: Colour: to be decided (Sand / Brown Blend)
	bench
	Decorated Plant Pot



asphalt back lane typ.
 driveway to parking lot typ.
 basement level planter with metal railing, max. 4' ht. typ.
 back lane entrance at basement level typ.
 basement deck, AquaPaver Venetian Cobble Series typ. colour: Granite Blend
 basement concrete stairs typ.
 1st level balcony, see arch. drawing for details typ.
 property typ.
 basement level planter typ.
 planter with metal railing typ.
 letdown typ. see civil drawings for details

concrete ramp typ.
 curb and gutter typ. see civil drawing for details

retaining wall with metal railing max. 4' th. height typ.
 sidewalk typ.
 drive way typ.
 4'ht. hedge typ.

property line typ. planter typ.
 metal railing typ.
 concrete ramp to basement typ.
 1st level deck, porcelain slab typ.
 litter typ.
 concrete stairs typ.
 bench typ. planter typ.
 planter typ.
 concrete paver path typ.
 42" ht. metal guardrail typ.
 concrete stairs to basement mechanical room typ.
 concrete stairs to 1st level typ.
 concrete path typ.

planter typ.
 1st floor main entrance and front deck typ.
 planter at basement level typ.
 concrete stairs to basement level typ.
 retaining wall typ.
 1st level deck, porcelain slab paver typ.
 basement level deck, AquaPaver Venetian Cobble Series typ. colour: Granite Blend
 1st level main entrance typ.
 planter, concrete retaining wall typ.
 sawcut existing asphalt for new services. see civil drawings for details
 metal railing typ. planting area typ. retaining wall with metal railing, max. 4' ht. porcelain slab paver typ. screen fence typ.
 property line typ.
 planter at basement level typ.
 retaining wall with metal railing typ.
 lawn typ. concrete stairs typ.

planter typ.
 1st level main entrance typ.
 lawn typ.
 letdown typ. see civil drawings for details

concrete ramp typ.
 retaining wall with metal railing max. 4' th. height typ.
 sidewalk typ.
 drive way typ.
 4'ht. hedge typ.
 mail box typ.
 bench typ.
 curb and gutter typ. see civil drawings for details

door to parking level typ.
 litter typ.
 planter pot typ.
 amenity area, porcelain slab paver typ.
 concrete stairs typ.
 amenity area entrance, concrete path typ.

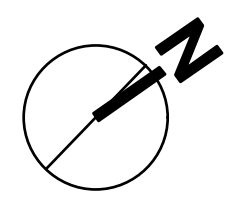
Legend-Grading

ex 79.1	Existing Grade
fg 79.1	Proposed Grade
tw 79.1	Proposed Top of Wall Grade
bw 79.67	Proposed Bottom of Wall Grade
tc 79.71	Proposed Top of Curb Grade
bc 79.56	Proposed Bottom of Curb Grade
PD lp 80.38	Planter Drain / Low Point
AD lp 80.38	Area Drain / Low Point
LB lp 80.38	Lawn Basin / Low Point
CB lp 80.38	Catch Basin / Low Point
2%	Slope

Legend-Layout

	Property Line
	Guardrail on Top of Retaining Wall
	Concrete Wall
	Concrete Wall/Curb
	Drain Strip / Decorated Pebble
	Lower Patio Paver (HydraPressed paver) Abbotford Concrete Products Hydrapressed Paver Pattern: Colour: to be decided (Sand / Brown Blend)
	bench
	Decorated Plant Pot

- General Notes:**
- All landscape works (including boulevard areas) to be automatically irrigated
 - Where soft landscape areas meet building foundation wall, 12" wide gravel drain strip to be installed at landscape grade.
 - Paving Surfaces: (or to be decided by the client)
 - Stair Landings: C.I.P concrete. Colour: Light Grey (or equivalent);
 - Patios: AquaPave, Aristokrat Porcelain by Abbotford Concrete Products
 - Guard-rails to be installed where required by code.
 - Catch Basin and Area Drain, refer to the arch. drawings.
 - Off site grading refer to the civil drawings.



viewise
Landscape Design Inc.
www.viewiselandscapedesign.com

2546 Dallas Ct. Coquitlam
BC Canada V3E 2P1
tel: 604-942-8990
e: cherie@viewiselandscapedesign.com

Consultants:
HASSAN MOAYERI
ARCHITECT

Revisions:
1. Rezoning Submission - Sept. 15, 2020



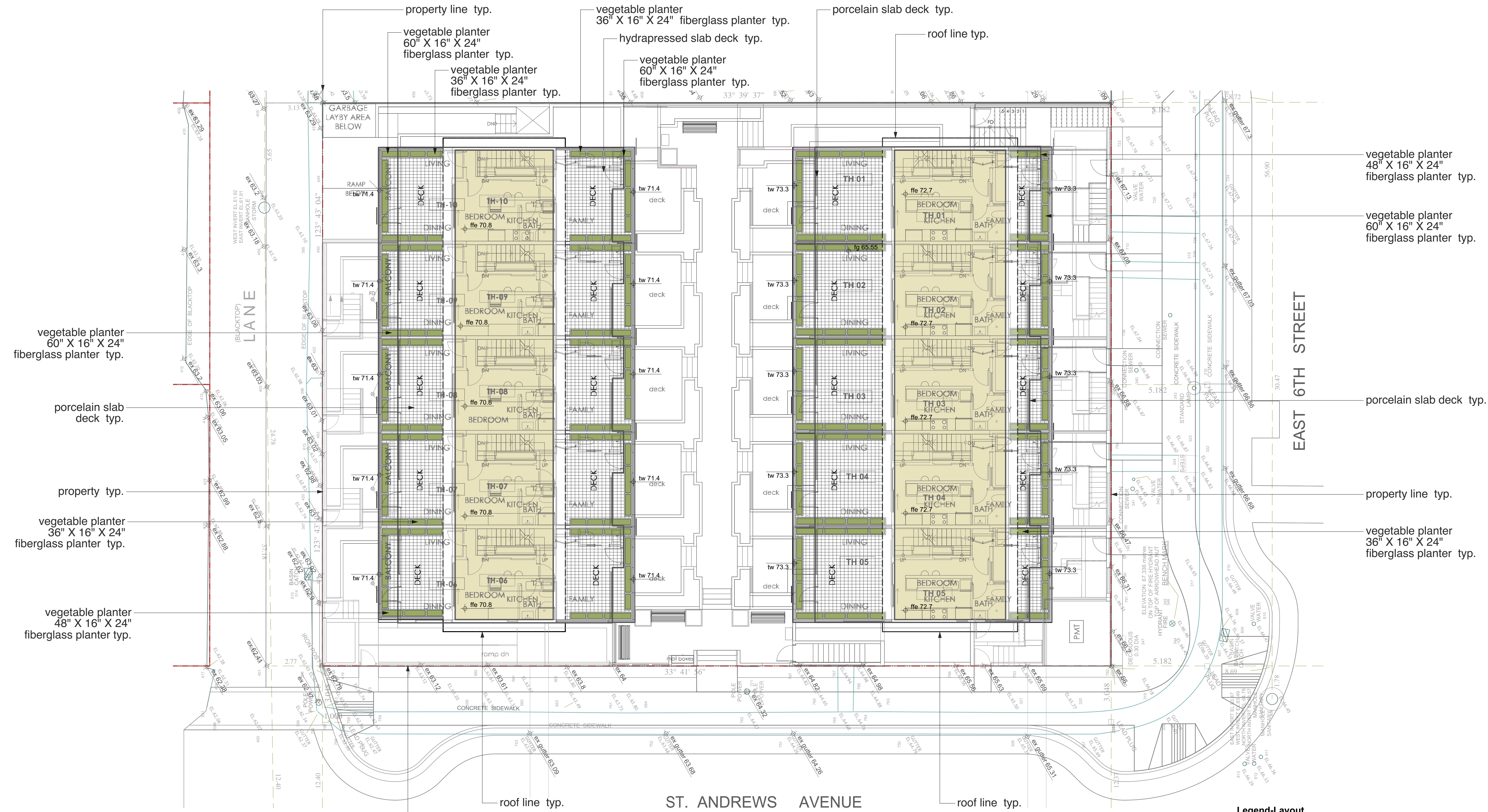
Project:
273&279 EAST 6TH STREET,
NORTH VANCOUVER, BC

Title:
LAYOUT AND GRADING PLAN
3RD FLOOR

Drawn: HC
Checked:
Scale: 1:100

Project No: 20.001
Sheet No: L 2.3

Copyright reserved. This drawing and design is the property of Viewise Landscape Design Inc. and may not be used without L23000000. Architects shall verify and be responsible for all dimensions and for all dimensions on the job. Contractors shall verify and be responsible for all dimensions on the job. The client shall be informed of any changes made on site.



vegetable planter
60" X 16" X 24"
fiberglass planter typ.

porcelain slab
deck typ.

property typ.

vegetable planter
36" X 16" X 24"
fiberglass planter typ.

vegetable planter
48" X 16" X 24"
fiberglass planter typ.

vegetable planter
48" X 16" X 24"
fiberglass planter typ.

vegetable planter
60" X 16" X 24"
fiberglass planter typ.

porcelain slab deck typ.

property line typ.

vegetable planter
36" X 16" X 24"
fiberglass planter typ.

General Notes:

- All landscape works (including boulevard areas) to be automatically irrigated
- Where soft landscape areas meet building foundation wall, 12" wide gravel drain strip to be installed at landscape grade.
- Paving Surfaces: (or to be decided by the client)
 - Stair Landings: C.I.P concrete. Colour: Light Grey (or equivalent);
 - Patios: AquaPave, Aristokrat Porcelain by Abbotsford Concrete Products
- Guard-rails to be installed where required by code.
- Catch Basin and Area Drain, refer to the arch. drawings.
- Off site grading refer to the civil drawings.

Legend-Grading

ex 79.1	Existing Grade
fg 79.1	Proposed Grade
tw 79.1	Proposed Top of Wall Grade
bw 79.67	Proposed Bottom of Wall Grade
tc 79.71	Proposed Top of Curb Grade
bc 79.56	Proposed Bottom of Curb Grade
PD ↓ lp 80.38	Planter Drain / Low Point
AD ↓ lp 80.38	Area Drain / Low Point
LB ↓ lp 80.38	Lawn Basin / Low Point
CB ↓ lp 80.38	Catch Basin / Low Point
2%	Slope

Legend-Layout

	Property Line
	Guardrail on Top of Retaining Wall
	Concrete Wall
	Concrete Wall/Curb
	Drain Strip / Decorated Pebble
	Lower Patio Paver (HydraPressed paver) Abbotsford Concrete Products HydraPressed Paver Pattern: to be decided (Sand / Brown Blend)
	bench
	Decorated Plant Pot



Consultants:
HASSAN MOAYERI
 ARCHITECT

Revisions:
 1. Rezoning Submission - Sept. 15, 2020

ID	Latin Name	Common Name	Quantity	Scheduled Size	Notes
TREES (DECIDUOUS & CONIFEROUS)					
CEA	Cornus canadensis	Eastern Redbud	1	5cm cal	
CRA	Cornus 'Rubra' Aurora	Aurora Flowering Dogwood	1	5cm cal	
PDP	Populus tremuloides	Quaking Aspen	3	3.0m ht.	
Tft	Trachycarpus fortunei	Windmill palm	2	2.5m	
SHRUBS					
Az9	Azalea 'Blue Danube'	Blue Danube azalea	4	#2 pot	
Az3	Azalea 'Gumpo Pink' Dwarf	Gumpo Pink Azalea	5	#1 pot	
Az1	Azalea 'Hino-Crimson'	Hino-Crimson Azalea	15	#1 pot	
Az4	Azalea x 'Golden Lights'	Golden Lights Azalea	3	#1 pot	
Bs	Buxus sempervirens	Common Boxwood	30	#5 pot	
Ch	Choisya ternata	Mexican Orange Blossom	6	#5 pot	
ec1	Erica carnea	Spring Heath	12	#1 pot	
Nad	Nandina domestica	Heavenly Bamboo	16	#3 pot	
Npd	Nandina domestica 'Nana Purpurea'	Dwarf Sacred Bamboo	15	#3 pot	
Az7	Rhododendron 'Blue Diamond'	Blue Diamond Rhododendron	5	#2 pot	
Az8	Rhododendron 'Ken Janek'	Ken Janek Rhododendron	4	#2 pot	
Rh4	Rhododendron 'Princess'	Princess Rhododendron	7	#3 pot	
Rh5	Rhododendron atlanticum	Coast Azalea	7	#3 pot	
Az6	Rhododendron ramapo	Rhododendron Ramapo	5	#2 pot	
Sh	Sarcococca hookeriana var. humilis	Sweet Box	29	#3 pot	
Sar	Sarcococca ruscifolia	Fragrant Sarcococca	13	#3 pot	
Sk	Skimmia japonica	Japanese Skimmia	12	#3 pot	
Yoh	Taxus x media 'Hicks'	Hick's Yew	82	#3 pot	
Vid	Viburnum davidii	David Viburnum	6	#3 pot	
PERENNIALS & GROUNDCOVERS					
Ar	Arctostaphylos ova-ovata 'Yancover'	Bearberry, Kinnikinnick	47	#1 pot	
Es	Erigeron annuus 'Evergreen Candytuft'	Evergreen Candytuft	71	#1 pot	
L	Lavandula latifolia	English Spike Lavender	51	#1 pot	
Pol	Polystichum munium	Western sword fern	23	#1 pot	
ORNAMENTAL GRASSES & BAMBOOS					
CF	Calamagrostis x acutiflora 'Karl Foerster'	Karl Foerster Feather Reed Grass	28	#1 pot	
msp	Miscanthus sinensis 'Purpureascens'	Purple Silver Grass	29	#1 pot	
VINES					

General Notes

- All materials and execution of landscape works shall conform to the CLS/B.C.N.T.A. Landscape standard. Refer to written specifications for complete landscape documentation.
- All landscape works (including boulevard) to be automatically irrigated.
- The Landscape Contractor shall ensure that the on-site planting medium/soil meets the specification & recommendations of the soil analysis taken at the time of Substantial Completion. All recommendations of the soil analysis shall be executed prior to Final Acceptance of the landscape works by the Consultant and the municipal authorities.
- Minimum planting medium depths:
 lawn - 6"/150mm,
 groundcover - 12"/300 mm
 shrubs - 18"/450 mm, over structures: 20"/36" / 500-900mm
 trees - 36" / 900mm and 12"/300 mm (around & beneath rootball)
- All plant material shall meet minimum size requirements as indicated in plant list. Quality of plant material and grading of site to conform to the B.C.N.T.A. standard for container grown stock.
- All plant material to be supplied on the job site must be obtained from a nursery participating in the BCLNA Phytophthora ramorum Certification Program. Plant material provided by the contractor found to be carrying Pr will be removed, disposed of and replaced at the contractor's expense.
- Tree Protection Measures
 Where construction, demolition, or excavation is to take place within 4m of the drip line of a tree to be retained, a protection barrier at least 4'0" (1.2m) in height must be installed around the tree or group of trees to be retained. The diameter of the barrier shall be no smaller than the drip line of the tree(s). The barrier must be constructed of snow fencing staked every 3' (1m), plywood sheets fastened to wooden stakes or of another form approved by the municipality. The barrier shall be constructed prior to any site work and remain intact until all construction is complete. The barrier shall clearly display all-weather signage indicating that the area is a protected zone. Any work which must be done within the protection zone is to be done by hand. No burning is to take place close enough for the flames or heat to damage any tree to be retained.



Project:
 273&279 EAST 6TH STREET,
 NORTH VANCOUVER, BC

Title:
PLANTING PLAN
BASEMENT FLOOR

Drawn: HC
 Checked:
 Scale: 1:100

Project No: 20.001
 Sheet No: L 3.1

Copyright reserved. This drawing and design is the property of Viewwise Landscape Design Inc. and may not be used without L3D's consent. Architects shall verify and be responsible for all dimensions on the job and the site office shall be informed of any changes made on site.



ID	Latin Name	Common Name	Quantity	Scheduled Size	Notes
TREES (DECIDUOUS & CONIFEROUS)					
ARS	<i>Acer rubrum 'Sunset'</i>	Sunset Red Maple	3	6cm cal.	
CRA	<i>Cornus 'Rutban' Aurora</i>	Aurora Flowering Dogwood	2	5cm cal.	
SHRUBS					
Txh	<i>Taxus x media 'Hicksii'</i>	Hick's Yew	145	#3 pot	
PERENNIALS & GROUNDCOVERS					
ORNAMENTAL GRASSES & BAMBOOS					
VINES					

ID	Latin Name	Common Name	Quantity	Scheduled Size	Notes
TREES (DECIDUOUS & CONIFEROUS)					
CRK	<i>Cercis canadensis</i>	Eastern Redbud	1	5cm cal.	
CRA	<i>Cornus 'Rutban' Aurora</i>	Aurora Flowering Dogwood	1	5cm cal.	
POP	<i>Populus tremuloides</i>	Quaking Aspen	3	3.0m ht.	
Trf	<i>Trachycarpus fortunei</i>	Windmill palm	2	2.5m	
SHRUBS					
Az9	<i>Azalea 'Blue Danube'</i>	Blue Danube azalea	4	#2 pot	
Az3	<i>Azalea 'Gumpo Pink' Dwarf'</i>	Gumpo Pink Azalea	5	#1 pot	
Az1	<i>Azalea 'Hans-Crimson'</i>	Hans-Crimson Azalea	15	#1 pot	
Az4	<i>Azalea x 'Golden Lights'</i>	Golden Lights Azalea	3	#1 pot	
Bs	<i>Buxus sempervirens</i>	Common Boxwood	30	#5 pot	
Ch	<i>Chamaecyparis</i>	Mossy Green Blossom	6	#5 pot	
ec1	<i>Erica carnea</i>	Spring Heath	12	#1 pot	
Nad	<i>Nandina domestica 'Nana Purpurea'</i>	Dwarf Sacred Bamboo	16	#3 pot	
Ned	<i>Nandina domestica</i>	Dwarf Sacred Bamboo	15	#3 pot	
Az7	<i>Rhododendron 'Blue Diamond'</i>	Blue Diamond Rhododendron	5	#2 pot	
Az8	<i>Rhododendron 'Ken Jarneck'</i>	Ken Jarneck Rhododendron	4	#2 pot	
Rh4	<i>Rhododendron 'Princess'</i>	Princess Rhododendron	7	#3 pot	
Rh5	<i>Rhododendron atlanticum</i>	Coast Azalea	7	#3 pot	
Az6	<i>Rhododendron ramapo</i>	Rhododendron Ramapo	5	#2 pot	
Sh	<i>Sarcococca hookeriana var. humilis</i>	Sweet Box	29	#3 pot	
Sar	<i>Sarcococca ruscifolia</i>	Fragrant Sarcococca	13	#3 pot	
Skj	<i>Skimmia japonica</i>	Japanese Skimmia	12	#3 pot	
Txh	<i>Taxus x media 'Hicksii'</i>	Hick's Yew	82	#3 pot	
Vid	<i>Viburnum davidii</i>	David Viburnum	6	#3 pot	
PERENNIALS & GROUNDCOVERS					
ar	<i>Aristida arvensis</i>	Bearberry, Kinnikinnick	47	#1 pot	
ib	<i>Iberis sempervirens</i>	Evergreen Candytuft	71	#1 pot	
ll	<i>Lavandula latifolia</i>	English Spike Lavender	51	#1 pot	
pol	<i>Polystichum munium</i>	Western sword fern	23	#1 pot	
ORNAMENTAL GRASSES & BAMBOOS					
ckf	<i>Calamagrostis x acutiflora 'Karl Foerster'</i>	Karl Foerster Feather Reed Grass	28	#1 pot	
msp	<i>Miscanthus sinensis 'Purpureascens'</i>	Purple Silver Grass	29	#1 pot	
VINES					

General Notes

- All materials and execution of landscape works shall conform to the CLS/B.C.N.T.A. Landscape standard. Refer to written specifications for complete landscape documentation.
- All landscape works (including boulevard) to be automatically irrigated.
- The Landscape Contractor shall ensure that the on-site planting medium/soil meets the specification & recommendations of the soil analysis taken at the time of Substantial Completion. All recommendations of the soil analysis shall be executed prior to Final Acceptance of the landscape works by the Consultant and the municipal authorities.
- Minimum planting medium depths:
lawn - 6"/150mm.
groundcover - 12"/300 mm
shrubs - 18"/450 mm, over structures: 20"-36" / 500-900mm
trees - 36" / 900mm and 12"/300 mm (around & beneath rootball)
- All plant material shall meet minimum size requirements as indicated in plant list. Quality of plant material and grading of site to conform to the B.C.N.T.A. standard for container grown stock.
- All plant material to be supplied on the job site must be obtained from a nursery participating in the BCLNA Phytophthora ramorum Certification Program. Plant material provided by the contractor found to be carrying Pr will be removed, disposed of and replaced at the contractor's expense.
- Tree Protection Measures
Where construction, demolition, or excavation is to take place within 4m of the drip line of a tree to be retained, a protection barrier at least 4'0" (1.2m) in height must be installed around the tree or group of trees to be retained. The diameter of the barrier shall be no smaller than the drip line of the tree(s). The barrier must be constructed of snow fencing staked every 3' (1m), plywood sheets fastened to wooden stakes or of another form approved by the municipality. The barrier shall be constructed prior to any site work and remain intact until all construction is complete. The barrier shall clearly display all-weather signage indicating that the area is a protected zone. Any work which must be done within the protection zone is to be done by hand. No burning is to take place close enough for the flames or heat to damage any tree to be retained.

N

viewise
Landscape Design Inc.
www.viewiselandscape.com

2546 Dallas Ct. Coquitlam
BC Canada V3E 2P1
tel: 604-942-8995
e: cherie@viewiselandscape.com

Consultants:
HASSAN MOAYERI ARCHITECT

Revisions:
1. Rezoning Submission - Sept. 15, 2020

Project:
273&279 EAST 6TH STREET,
NORTH VANCOUVER, BC

Title:
PLANTING PLAN
1ST FLOOR

Drawn: HC
Checked:
Scale: 1:100

Project No: 20.001 Sheet No: L 3.2

©2020 viewise. This drawing and design is the property of Viewise Landscape Design Inc. and may not be used without its written consent. All dimensions shall be in millimeters unless otherwise indicated. Contractors shall verify and be responsible for all dimensions on the job site. The client shall be notified of any changes made on site.



Populus tremuloides



Cercis canadensis



Cornus 'Rutban' Aurora



Trachycarpus fortunei



Taxus x media 'Hicksii' Hick's Yew



Thuja plicata hedge



Buxus Hedge



Sarcococca ruscifolia
Fragrant Sarcococca



Iberis sempervirens
Evergreen Candytuft



Nandina domestica 'Gulf Stream'
Gulf Stream Heavenly Bamboo



Rhododendron 'Blue Diamond'



Azalea 'Hino-Crimson'
'Hino-Crimson' Azalea



Rhododendron 'PJM'



Rhododendron 'Ken Janeck'



Erica carnea



Viburnum davidii



Rhododendron atlanticum
Coast Azalea



Azalea 'Blue Danube'



Choisya ternata



Rhododendron ramapo



Azalea x 'Golden Lights'



Azalea 'Gumpo Pink' Dwarf



Skimmia japonica



Sarcococca hookeriana var. humilis



Polystichum munitum
Western Sword Fern



Phonium 'Margaret Jones'



Miscanthus sinensis 'Purpurascens'



Calamagrostis x acutiflora 'Karl Foerster'

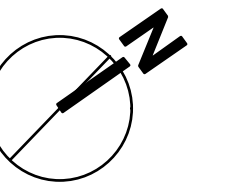


Lavandula latifolia



Arctostaphylos u. 'Vancouver Jade'

PLANT IMAGEBOARD



viewwise

Landscape Design Inc.
www.viewwiselandscapedesign.com

2546 Delta Ct. Coquitlam
BC Canada V3E 2P1
tel: 604-942-8990

e: cherie@viewwiselandscapedesign.com

Consultants:

HASSAN MOAYERI
ARCHITECT
P.L.L.C.

Revisions:

1. Rezoning Submission - Sept. 15, 2020



Project:

273&279 EAST 6th STREET,
NORTH VANCOUVER, BC

Title:

PLANT IMAGEBOARD

Drawn: IC

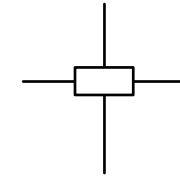
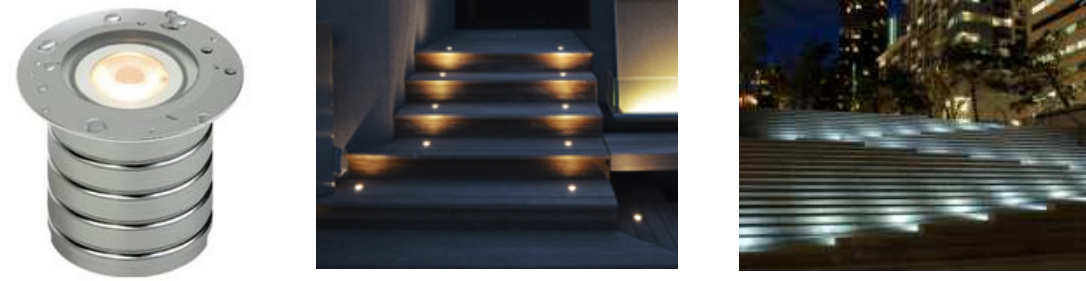
Checked:

Scale: N/A

Project No: 20.001

Sheet No: L3.4

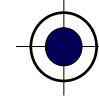
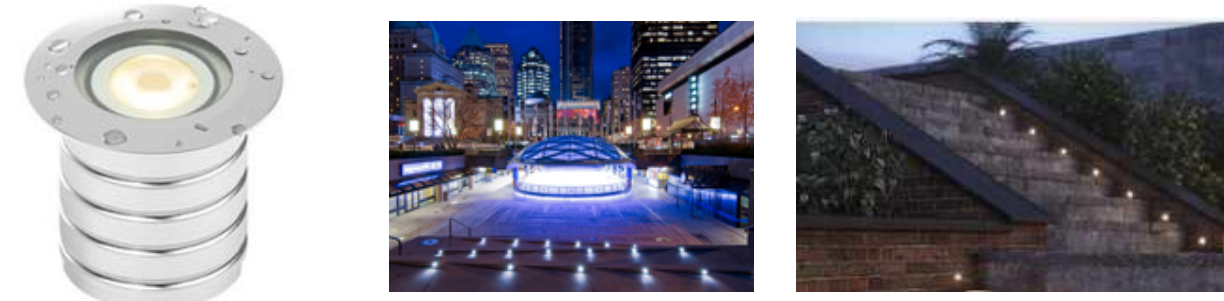
Copyright reserved. This drawing and design is the property of Viewwise Landscape Design Inc. and may not be used without permission. Architects shall carry and be responsible for all dimensions on the job and the client shall be notified of any changes made on site.



Supplier By: MP Lighting
 www.mplighting.com
 tel: 1 877 7081184
 Contact: Lilian Ortiz Davila email: Lilian.O@symmetry-lighting.com

Product: L01 S6
TYPE: Exterior directional in-grade light for the stairs
Colour: Light Grey, Stainless Steel

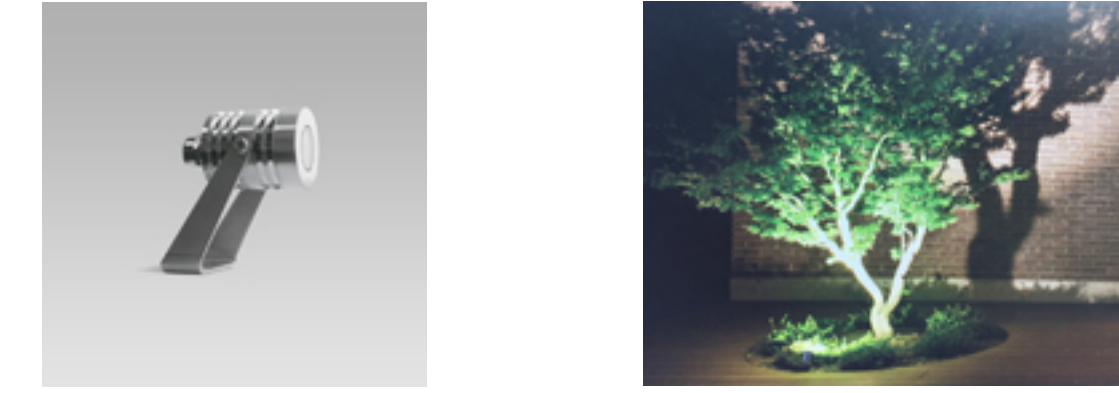
Location: pedestrian path
 or Equivalent Approved by the Owner



Supplier By: MP Lighting
 www.mplighting.com
 tel: 1 877 7081184
 Contact: Lilian Ortiz Davila email: Lilian.O@symmetry-lighting.com

Product: L01 MA
TYPE: Exterior directional in-grade light for the walls
Colour: Light Grey, Matte Anodized

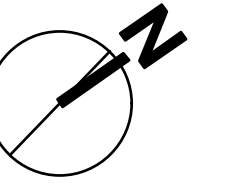
Location: retaining wall
 or Equivalent Approved by the Owner



Supplier By: Arcluca North America Inc.
 www.arcluca-us.com / www.symmetry-lighting.com
 tel: 778 373 3391
 Contact: Lilian Ortiz Davila email: Lilian.O@symmetry-lighting.com

Product: TITO55
TYPE: Landscape Spot Light (Wide Flood / Elliptical / Medium)
Colour: Stainless Steel

Location: Planter (Pedestrian Gate Area)
 or Equivalent Approved by the Owner

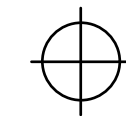


Landscape Design Inc.
 www.viewiselandscapedesign.com

2546 Delta Ct. Coquitlam
 BC Canada V3E 2P1
 tel: 604-942-8990
 e: cherie@viewiselandscapedesign.com

Consultants:
 HASSAN MOAYERI
 ARCHITECT

Revisions:
 1. Rezoning Submission - Sept. 15, 2020



Supplier By: Ligman Lighting USA.
 www.ligmanlightingusa.com / www.symmetry-lighting.com
 tel: 778 373 3391
 Contact: Lilian Ortiz Davila email: Lilian.O@symmetry-lighting.com

Product: Utah Mini Floodlight - Utah 3 RGBW LED and Utah 1 LED - Constant Voltage (1 Driver for Multiple Fixtures)
Model: UUT-50554 and UUT-50552
TYPE: Landscape Spot/high Light
Colour: Black

Location: Court Yard Featured Trees
 or Equivalent Approved by the Owner

Legend

A		landscape highlight lighting
B		landscape light
C		in ground light
D		wall light / meet code

Note: All lighting materials and installation details to meet the manufacturer's specifications or approved equal by the owner.



Project:
 273&279 EAST 6TH STREET,
 NORTH VANCOUVER, BC

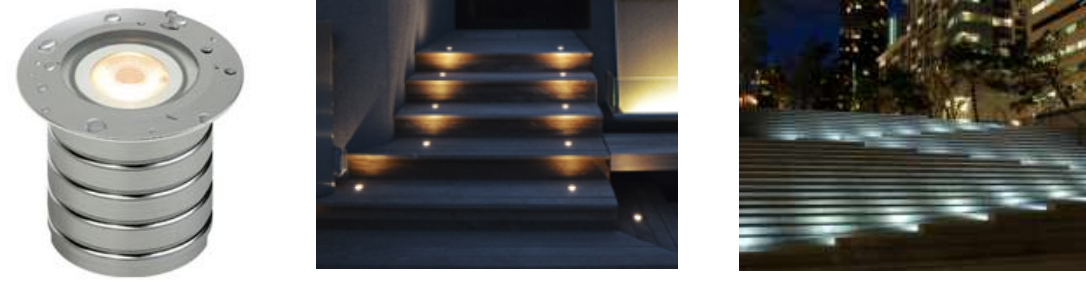
Title:
 LIGHTING PLAN
 BASEMENT FLOOR

Drawn: HC
Checked:
Scale: 1:100

Project No: 20.001 **Sheet No:** L 4.1

Copyright reserved. This drawing and design is the property of Viewise Landscape Design Inc. and may not be used without their permission. Architects shall verify and be responsible for all dimensions on the job and the client shall be informed of any changes made on site.

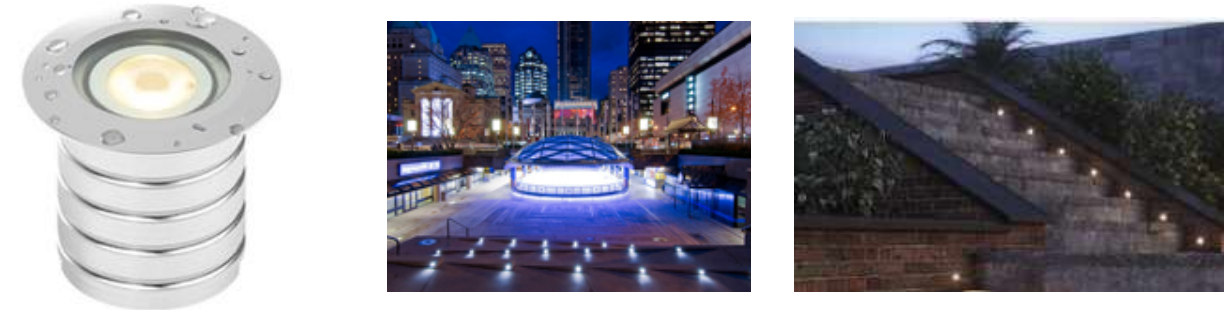




Supplier By: MP Lighting
 www.mplighting.com
 tel: 1 877 7081184
 Contact: Lilian Ortiz Davila email: Lilian.O@summetry-lighting.com

Product: L01 S6
TYPE: Exterior directional in-grade light for the stairs
Colour: Light Grey, Stainless Steel

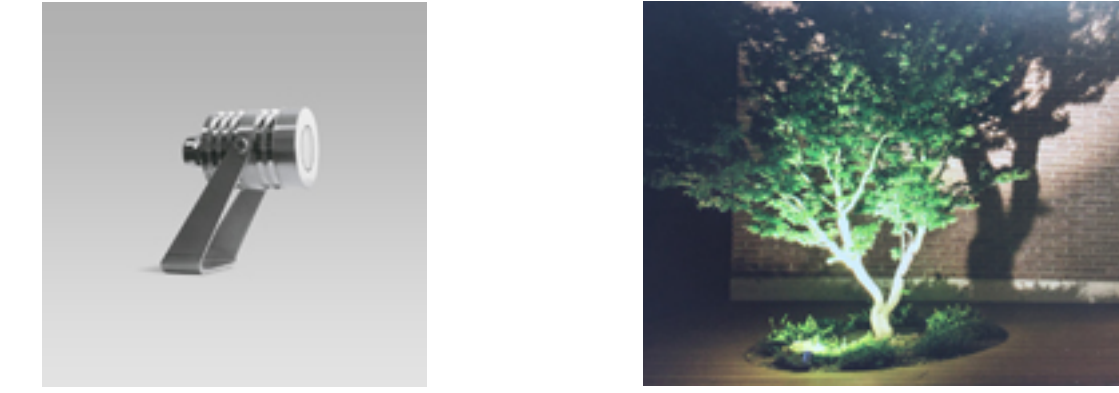
Location: pedestrian path
 or Equivalent Approved by the Owner



Supplier By: MP Lighting
 www.mplighting.com
 tel: 1 877 7081184
 Contact: Lilian Ortiz Davila email: Lilian.O@summetry-lighting.com

Product: L01 MA
TYPE: Exterior directional in-grade light for the walls
Colour: Light Grey, Matte Anodized

Location: retaining wall
 or Equivalent Approved by the Owner



Supplier By: Arcluca North America Inc.
 www.arcluca-us.com / www.symmetry-lighting.com
 tel: 778 373 3391
 Contact: Lilian Ortiz Davila email: Lilian.O@summetry-lighting.com

Product: TITO55
TYPE: Landscape Spot Light (Wide Flood / Elliptical / Medium)
Colour: Stainless Steel

Location: Planter (Pedestrian Gate Area)
 or Equivalent Approved by the Owner



Supplier By: Ligman Lighting USA.
 www.ligmanlightingusa.com / www.symmetry-lighting.com
 tel: 778 373 3391
 Contact: Lilian Ortiz Davila email: Lilian.O@summetry-lighting.com

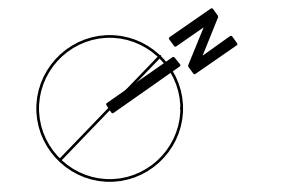
Product: Utah Mini Floodlight - Utah 3 RGBW LED and Utah 1 LED - Constant Voltage (1 Driver for Multiple Fixtures)
Model: UUT-50554 and UUT-50552
TYPE: Landscape Spot/high Light
Colour: Black

Location: Court Yard Featured Trees
 or Equivalent Approved by the Owner

Legend

A		landscape highlight lighting
B		landscape light
C		in ground light
D		wall light / meet code

Note: All lighting materials and installation details to meet the manufacture's specifications or approved equal by the owner.



viewise
 Landscape Design Inc.
 www.viewiselandscapedesign.com

2546 Dallas Ct. Coquitlam
 BC Canada V3E 2P1
 tel: 604-942-8990
 e: cherie@viewiselandscapedesign.com

Consultants:
HASSAN MOAYERI
 ARCHITECT

Revisions:
 1. Rezoning Submission - Sept. 15, 2020



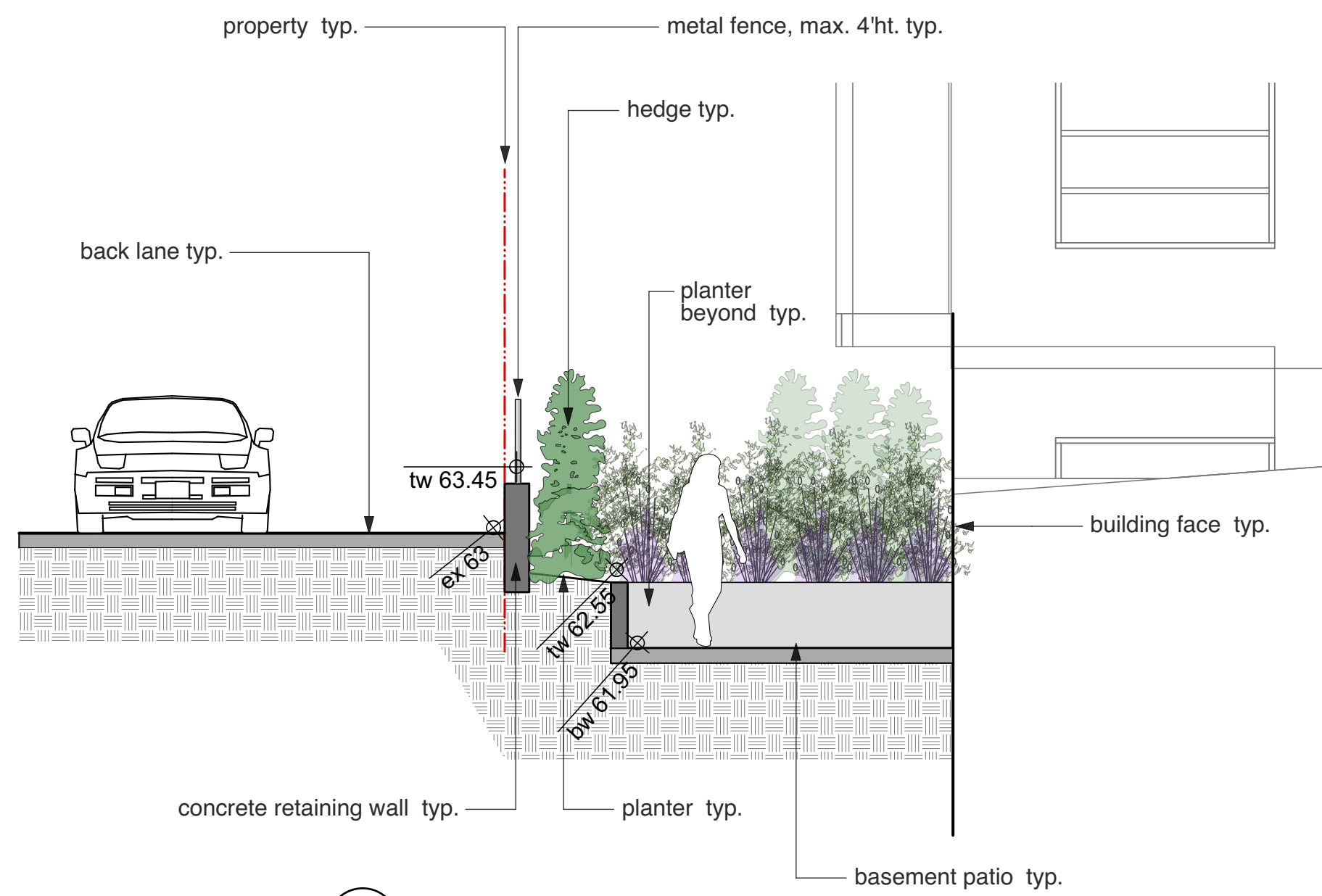
Project:
 273&279 EAST 6TH STREET,
 NORTH VANCOUVER, BC

Title:
LIGHTING PLAN
1ST FLOOR

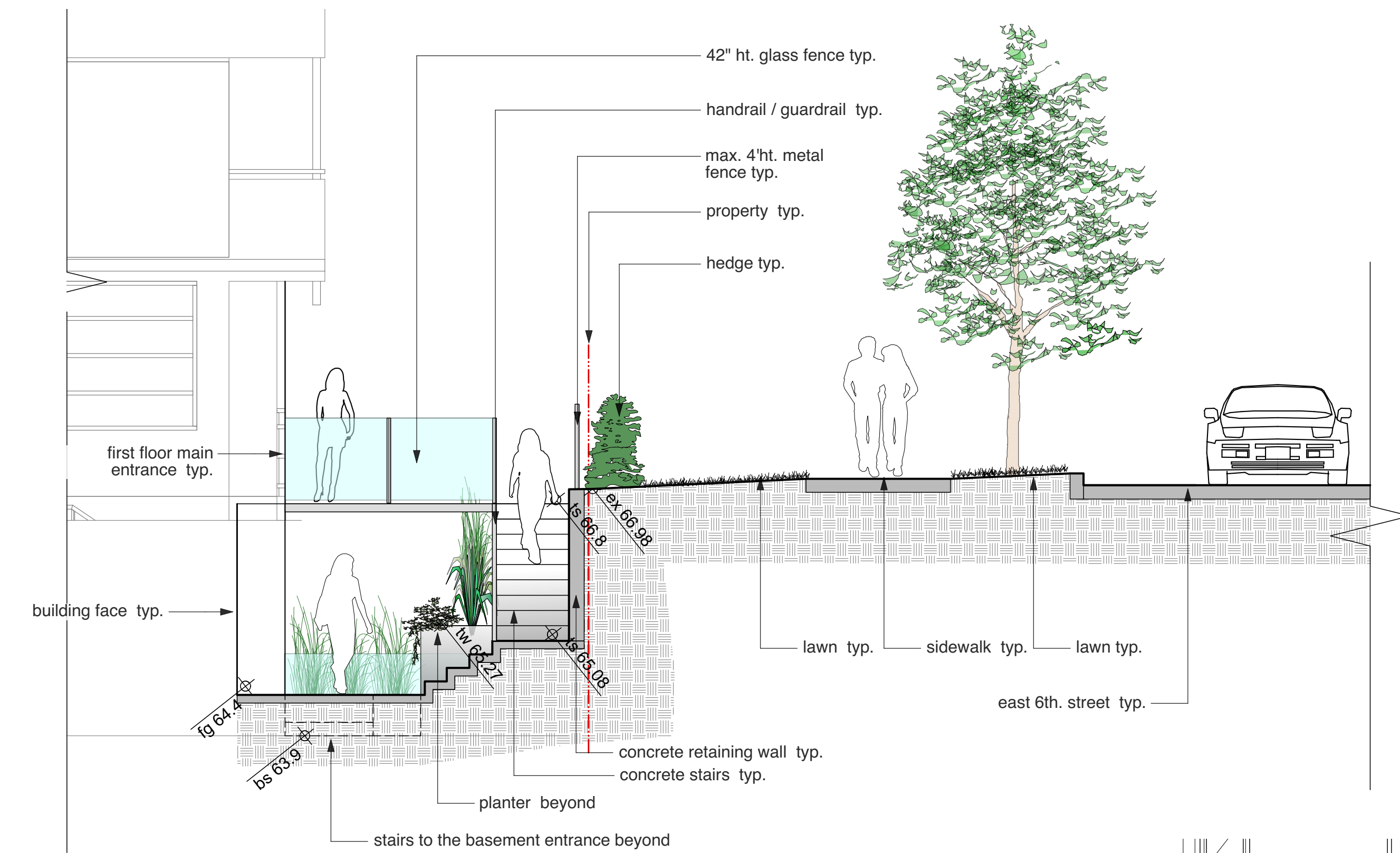
Drawn: HC
Checked:
Scale: 1:100

Project No: 20.001
Sheet No: L 4.2

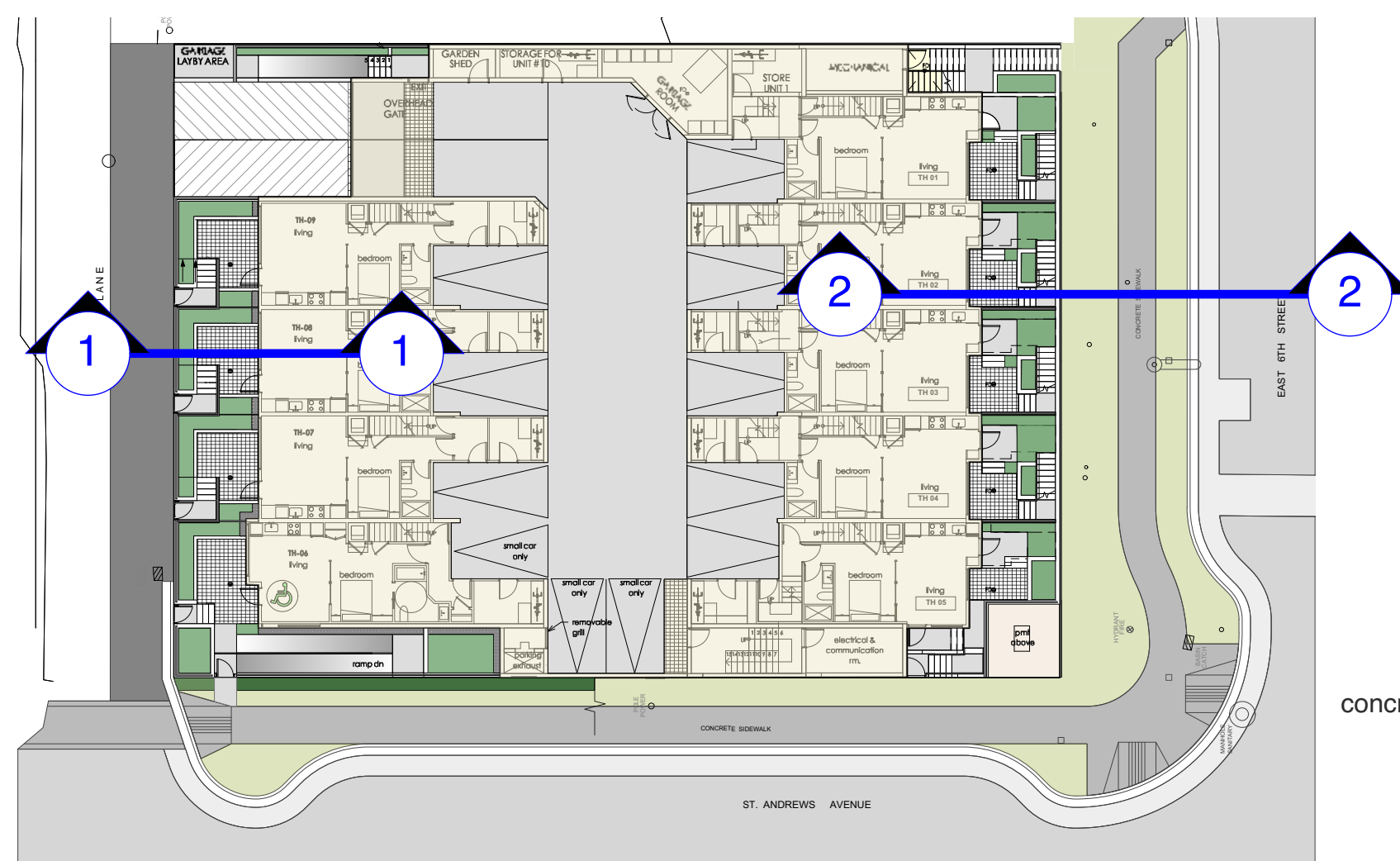
Copyright reserved. This drawing and design is the property of Viewise Landscape Design Inc. and may not be used without their written consent. All dimensions are in millimeters unless otherwise specified. All dimensions are to the face of the object unless otherwise specified. All dimensions are to the face of the object unless otherwise specified.



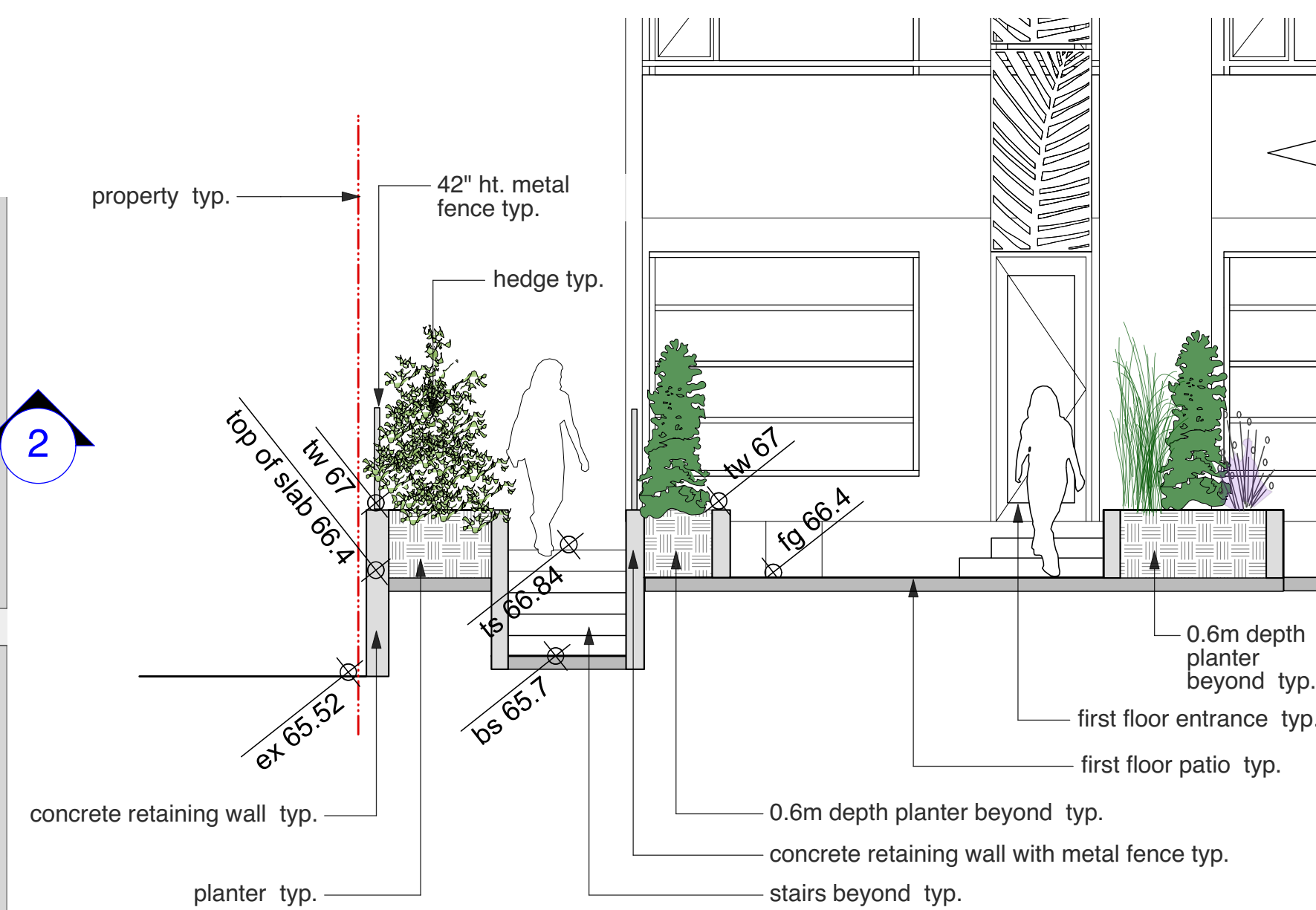
1 SECTION 1-1
Scale: 1:50



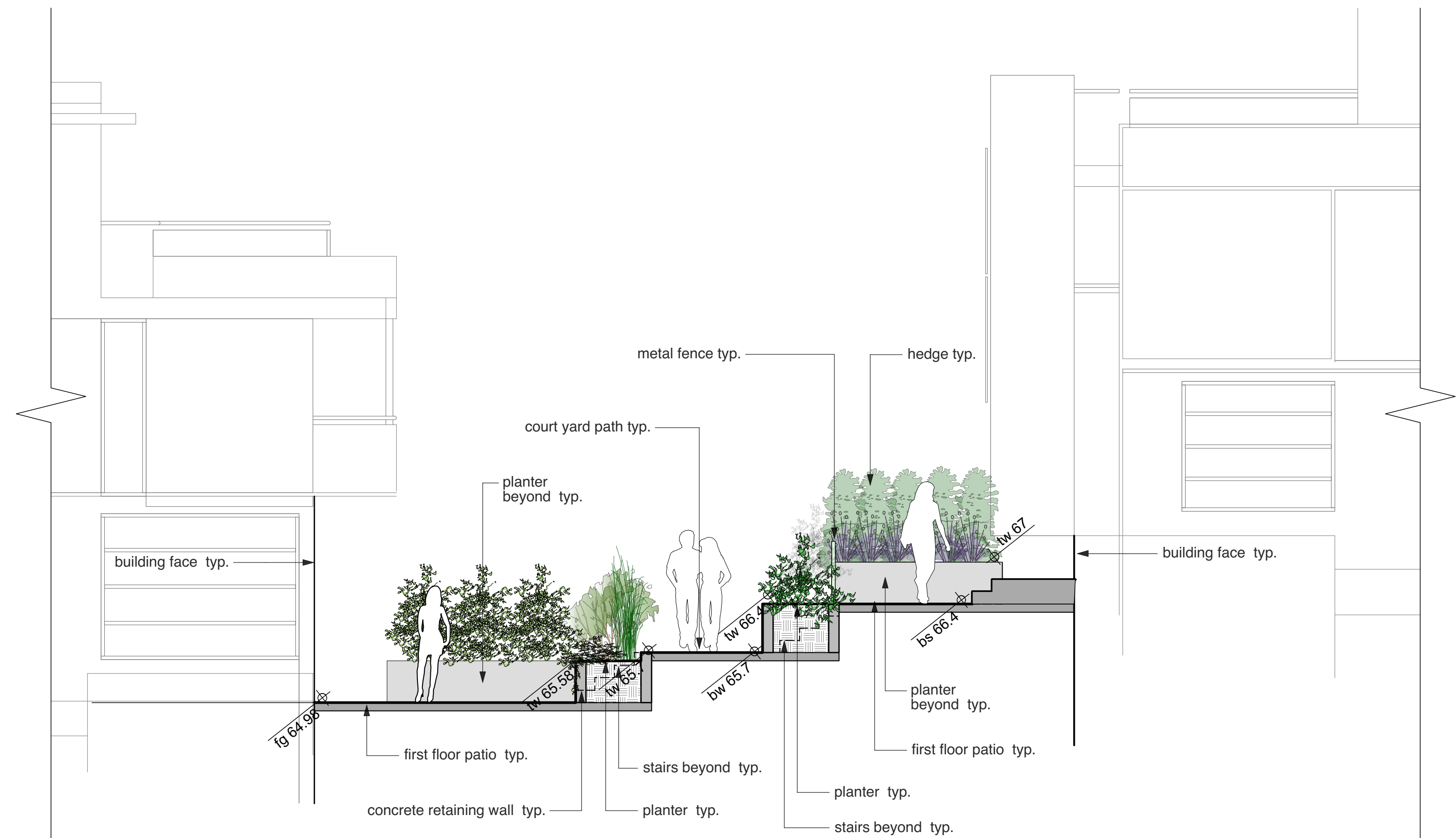
2 SECTION 2-2
Scale: 1:50



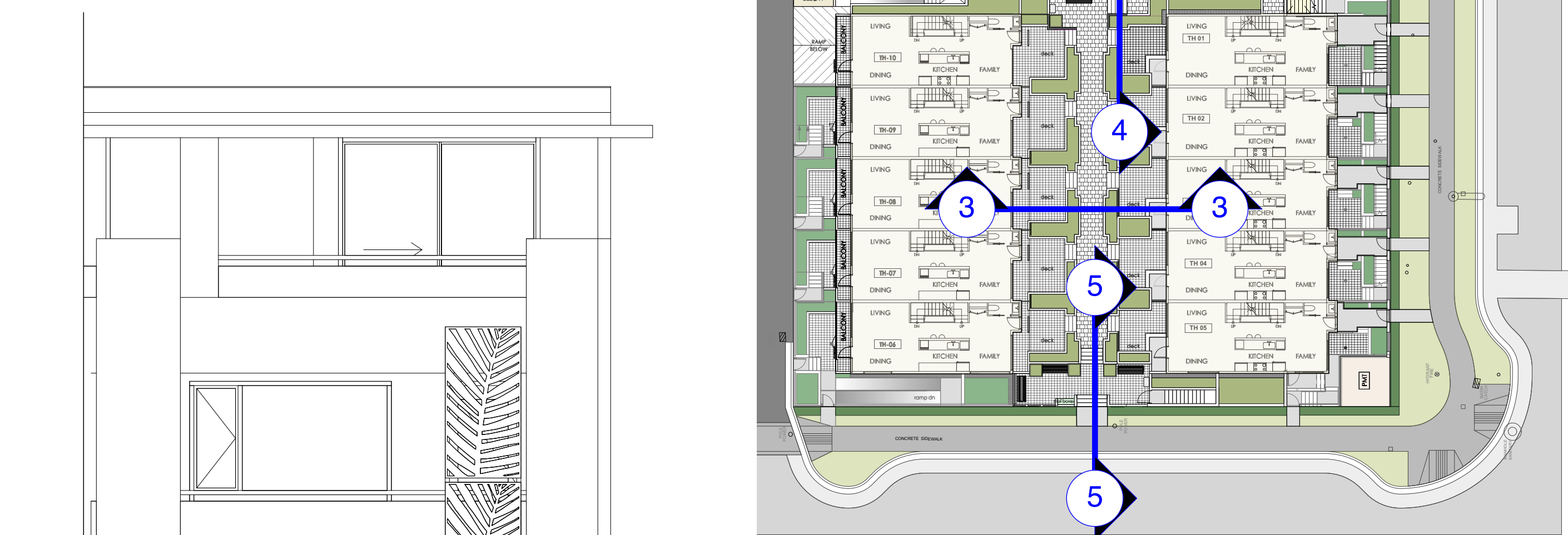
BASEMENT LEVEL KEY PLAN NTS



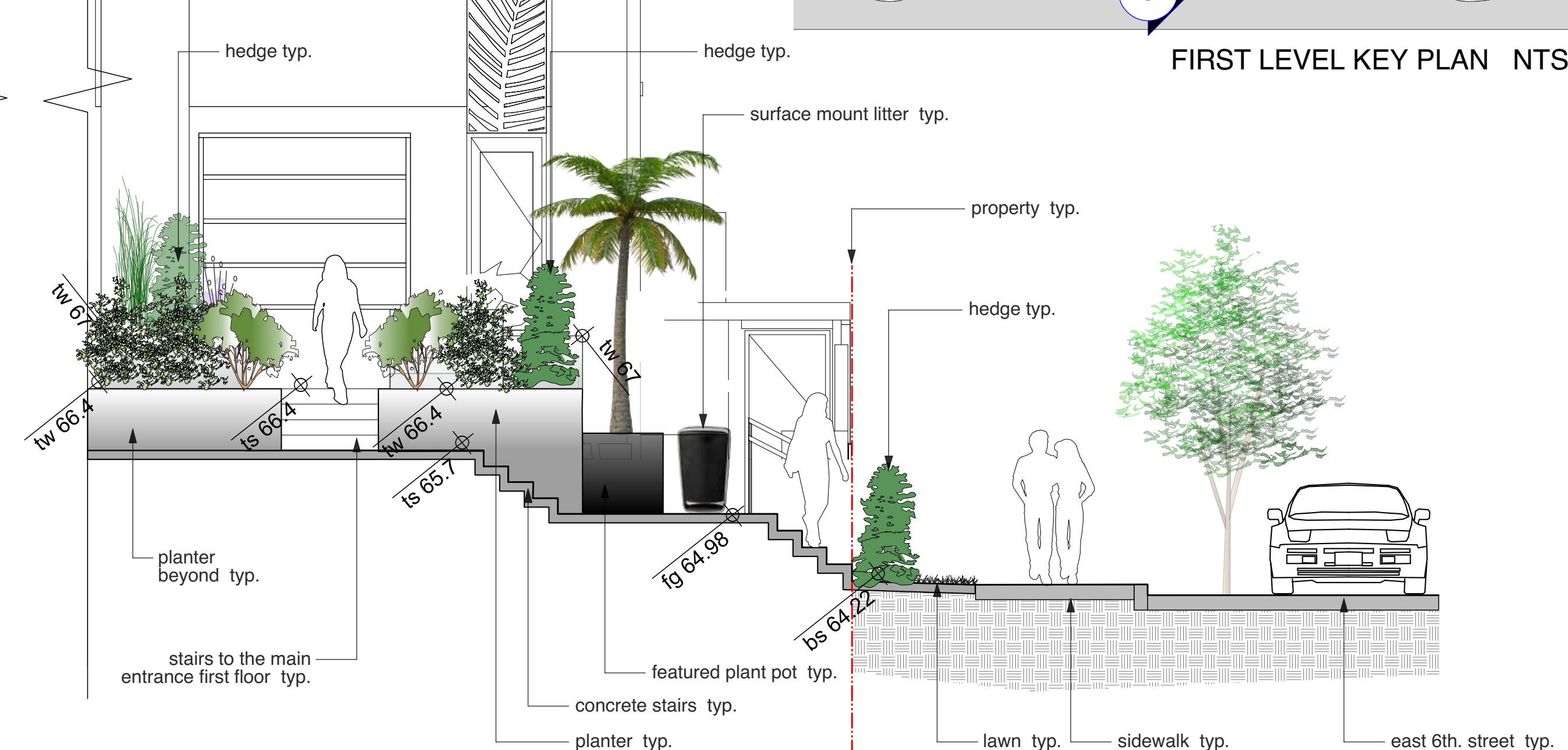
4 SECTION 4-4
Scale: 1:50



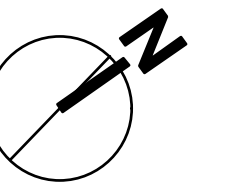
3 SECTION 3-3
Scale: 1:50



FIRST LEVEL KEY PLAN NTS



5 SECTION 5-5
Scale: 1:50



viewise

Landscape Design Inc.
www.viewiselandscapedesign.com

2546 Dallas Ct. Coquitlam
BC Canada V3E 2P1
tel: 604-942-8990

e: cherie@viewiselandscapedesign.com

Consultants:

HASSAN MOAYERI
ARCHITECT

1100 WEST 10TH AVENUE, SUITE 1000, VANCOUVER, BC V6H 1T6

Revisions:

1. Rezoning Submission - Sept. 15, 2020



Project:

273&279 EAST 6TH STREET,
NORTH VANCOUVER, BC

Title:

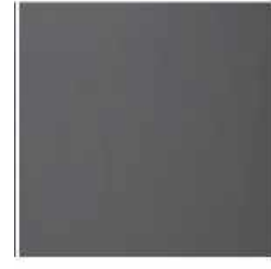
SECTIONS

Drawn: HC
Checked:
Scale: 1:50

Project No: 20.001
Sheet No: L 5.1

Copyright reserved. This drawing and design is the property of Viewise Landscape Design Inc. and may not be used without their consent. All dimensions shall be in millimeters unless otherwise specified. All dimensions on the job shall be taken from the field. All dimensions on the job shall be taken from the field.

Planter



Court Yard Planter

Supplier By: Atlaspots
tel: 604 265 5717
toll free: 844 600 0931
1087 Churchill Crescent, North Vancouver, BC. V7P 1P9
greenvilledesigns.com

Cube
Size: 36"x36"x36"
Colour: black or dark putty

Location: Court Yard / Amenity Area



Third Level Planter

Supplier By Greenville Planters
tel: 905 361 1368
info@greenvilledesigns.com
1295 Kamato Rd. Mississauga, ON L4W 2M2
greenvilledesigns.com

Rectangular Granada 70150
Size: 36"x24"x24", 48"x24"x24"
Colour: MCH Matte Charcoal
Cubes Montroy 69141
Size: 24"x24"x24"
Colour: MCH Matte Charcoal

Location: Thrid Floor Deck



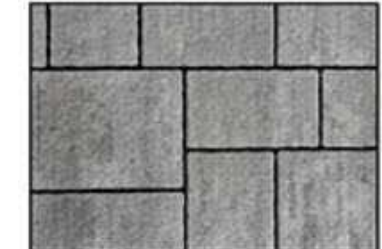
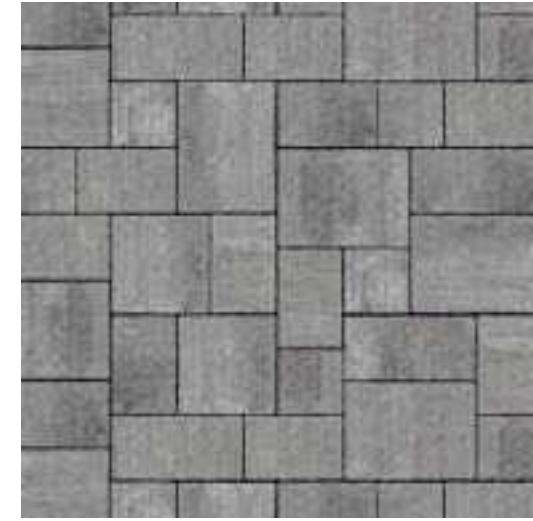
Third Level Vegetable Planter

Supplier By Greenville Planters
tel: 905 361 1368
info@greenvilledesigns.com
1295 Kamato Rd. Mississauga, ON L4W 2M2
greenvilledesigns.com

Rectangular Tolga 69367
Size: 36"x16"x24", 48"x16"x24", 60"x16"x24"
Colour: MCH Matte Charcoal

Location: Thrid Floor Deck

Paving Materials

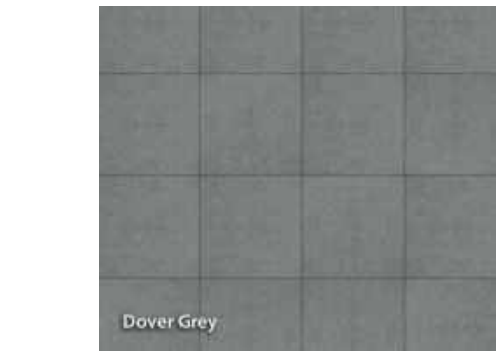
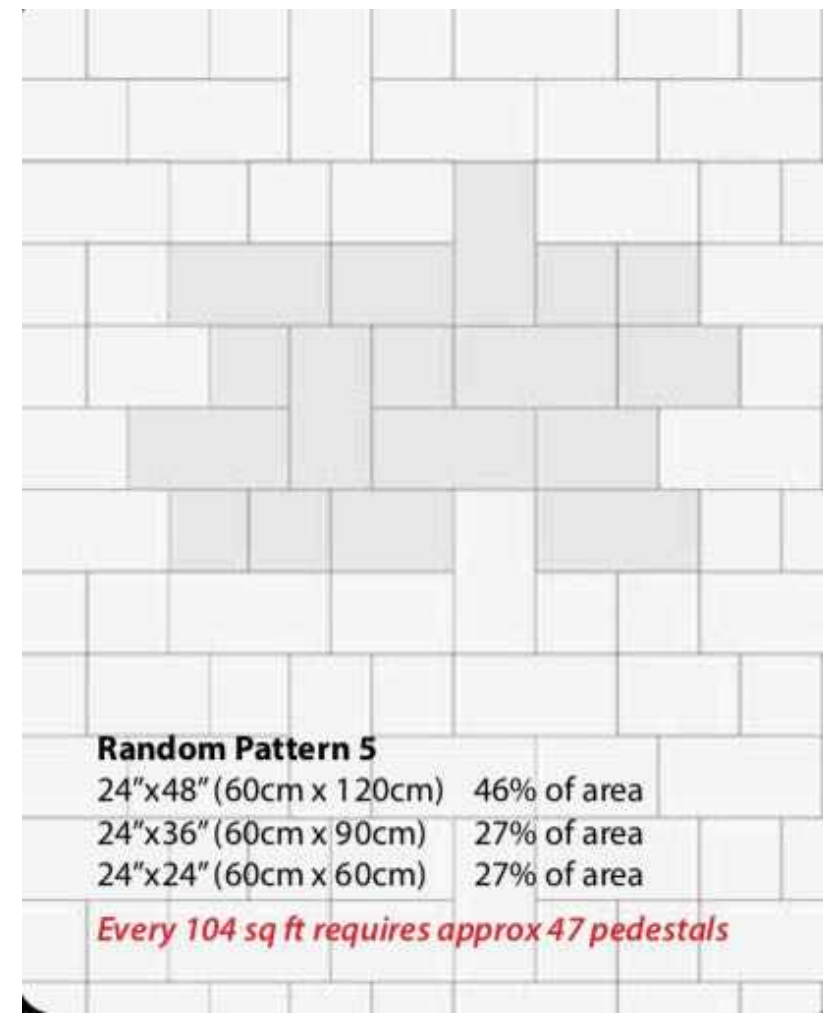


Granite® Blend

On Grade Deck Pavement

Supplier By: Abbotsford Concrete Products

Product: AquaPave Venetian Cobble Series
Size: Mixed Size
Colour: Granite Blend
Pattern: Running Bond Mixed offset



Dover Grey

Abbotsford Concrete Products

Aristokrat Porcelain Paver
Colour: Dover Grey
Size: 24"x48" (60cmx120cm), 24"x36" (60cmx90cm), 24"x24" (60cmx60cm)
Pattern: Random Pattern 5

Location: Court Yard Amenity Area



Shadow® Blend

On Grade Court Yard Pavement & Drive Way to Parking Lot

Supplier By: Abbotsford Concrete Products

Product: AquaPave Venetian Cobble Series
Size: 8 3/4" x 4 5/16" x 3 1/8" (221.5mmx110mmx80mm)
Colour: Shadow Blend
Pattern: Running Bond /Running Bond Mixed offset

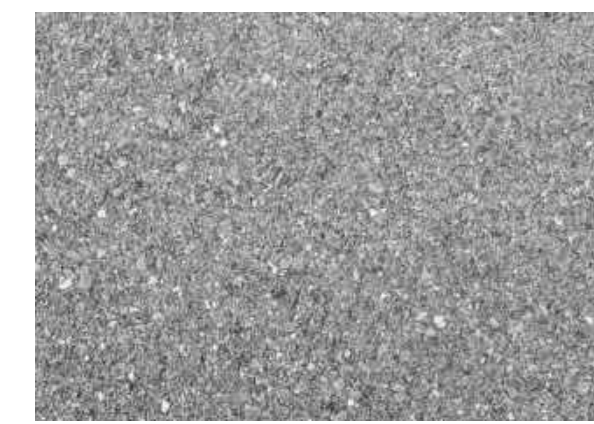


Arctic Mist

Abbotsford Concrete Products

Aristokrat Porcelain Paver
Colour: Arctic Mist
Size: 23 5/8" x 23 5/8" x 3/4" (60cm x 60cm x 2cm)
Pattern: Offset running bond

Location: Deck Pavement



Permeable Concrete Paving

Furniture



Supplier By: Landscape Forms
www.landscapeforms.com
tel: 800-430-6206 x 1326
Contact: Julia Ryan email: juliar@landscapeforms.com

Product: Austin Bench - Backed Arms
Size: 24" x 72" x 33"
Colour: Metallic - Silver

Location: Court Yard / Amenity Area

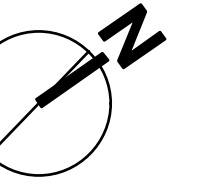


Supplier By: Landscape Forms

www.landscapeforms.com
tel: 800-430-6206 x 1326
Contact: Julia Ryan email: juliar@landscapeforms.com

Product: Collect Litter
Size: 16" x 24" x 38"
Colour: Metallic - Silver

Location: Court Yard / Amenity Area



Landscape Design Inc.
www.viewwiselandscapedesign.com

2546 Dalhousie Ct. Coquitlam
BC Canada V3E 2P1
tel: 854-942-8995

e: cherie@viewwiselandscapedesign.com

Consultants:

HASSAN MOAYERI ARCHITECT
ARCHITECT
2550 HURONTARIO ST. SUITE 101
MISSISSAUGA, ONTARIO L4W 1M5
TEL: 905-878-8888

Revisions:

1. Reasoning Submission - Sept. 15, 2020



Project:

273&279 EAST 6TH STREET,
NORTH VANCOUVER, BC

Title:

MATERIALS

Drawn:	HC
Checked:	
Scale:	1:100

Project No: 20.001
Sheet No: L 6.0

Copyright reserved. This drawing and design is the property of Viewwise Landscape Design Inc. and may not be used without written permission. Contractors shall verify and be responsible for all dimensions on the job and the office shall be informed of any changes made on site.