

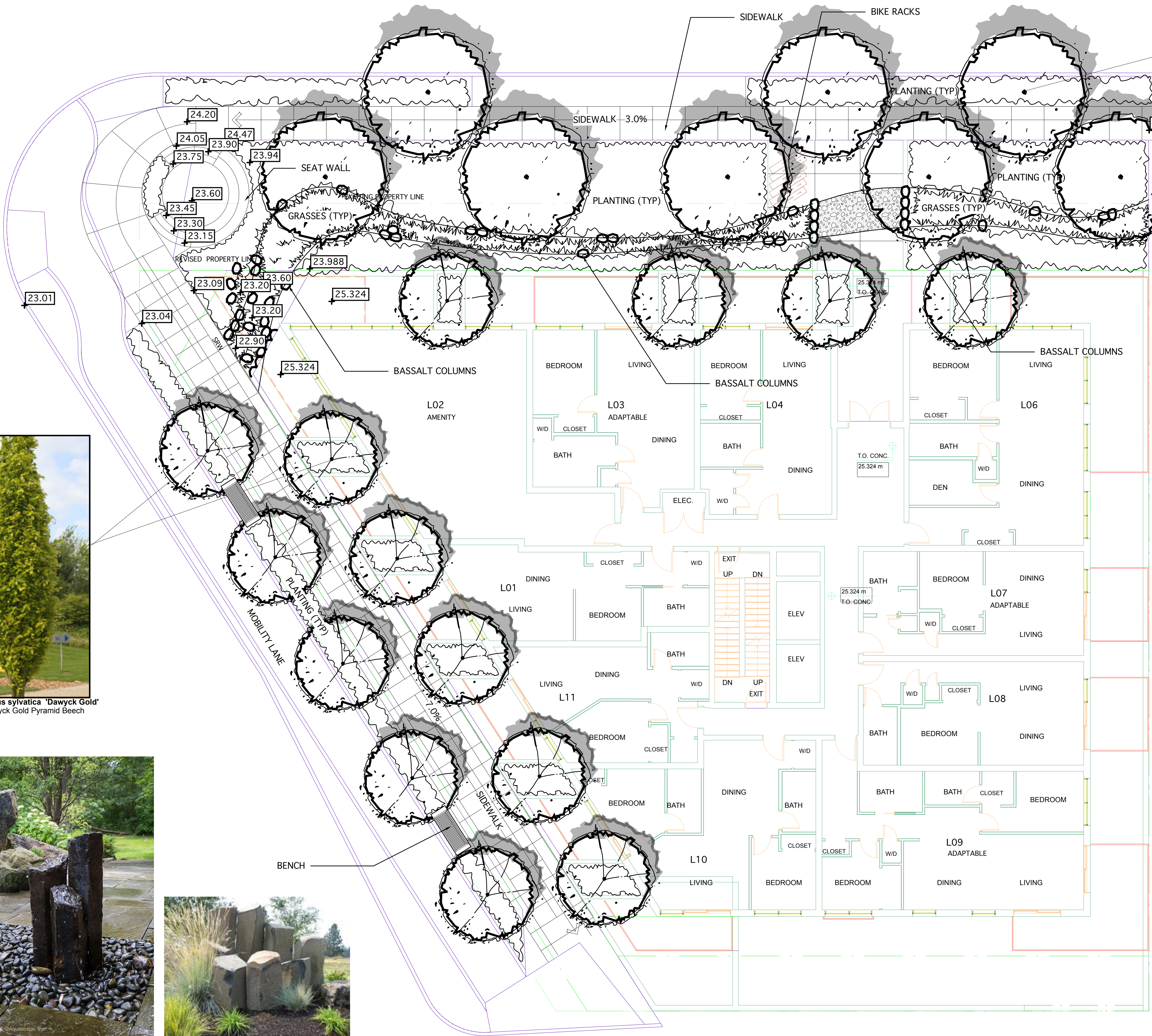


Fsdg *Fagus sylvatica* 'Dawcyk Gold'  
Dawcyk Gold Pyramid Beech



**The dry waterfall**

To accommodate the grade fall at the corner and to make it special, we are proposing a dry river of grasses that are sometimes punctuated and bordered with basalt columns. This culminates in the waterfall at the end of the site where grass planters drop 1 foot from 'pool' to 'pool' separated by basalt columns.



Acr *Acer rubrum* 'Franks Red'  
Red Maple 'Franks Red'

**The Band of Grasses**

Will be comprised of flowing bright traditional drought tolerant varieties and possibly some coloured species such as blood grass.



Fg *Festuca gautieri*  
Bearskin fescue



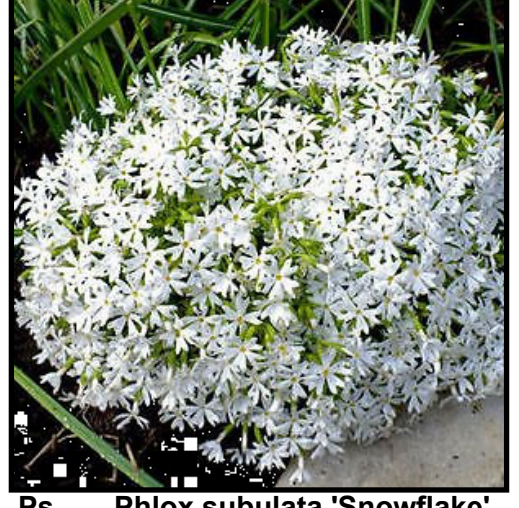
Ac *Achnatherum calamagrostis*  
Needle Grass



Stipa tenuissima  
Mexican Feather Grass

**The Band of Grasses - Continued**

It might also be highlighted with streaks of colourful perennials or bordered in them.



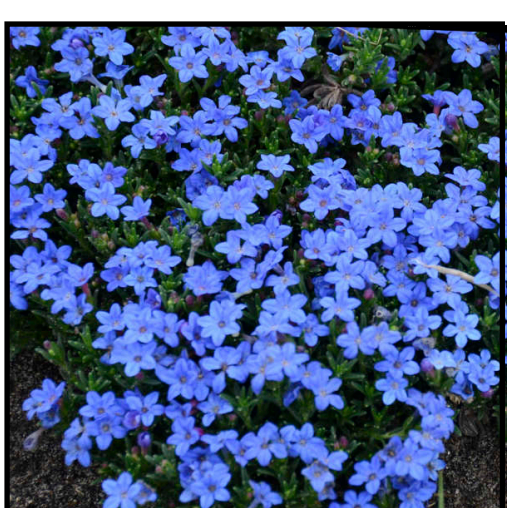
Ps *Phlox subulata* 'Snowflake'  
Snowflake Creeping Phlox



Ps *Phlox subulata* 'Snowflake'  
Snowflake Creeping Phlox



Ec *Erica carnea* 'Springwood White'  
Winter flowering heather



Ld *Lithodora diffusa* 'Grace Ward'  
Grace Ward Lithodora



Rh *Rudbeckia hirta* 'American Gold Rush'  
Black Eyed Susan



La *Lavandula agustifolia* 'Nana'  
Lavender Fern

**LEGEND**

DATE ISSUED

REV. DATE DESCRIPTION

**351 West 3rd. St.  
Midrise Residential**  
  
North Vancouver, BC

**Vaughan**  
Landscape Planning  
and Design  
  
1406 Clyde Ave.,  
West Vancouver, B.C.  
Canada V7T 1G1  
PH:922-1885  
FAX:922-5485  
office@vaughanplanning.com

DESIGNED MCV  
SCALE 1/8" = 1'-0"  
DATE Mar 14, 2022

**LANDSCAPE  
PLAN - GROUND**

DRAWING NO. REV  
**L1**

THIS REVISION SUPERCEDES DRAWINGS BEARING PREVIOUS REVISION NUMBER