

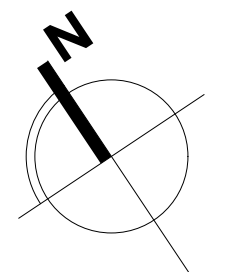


Integra

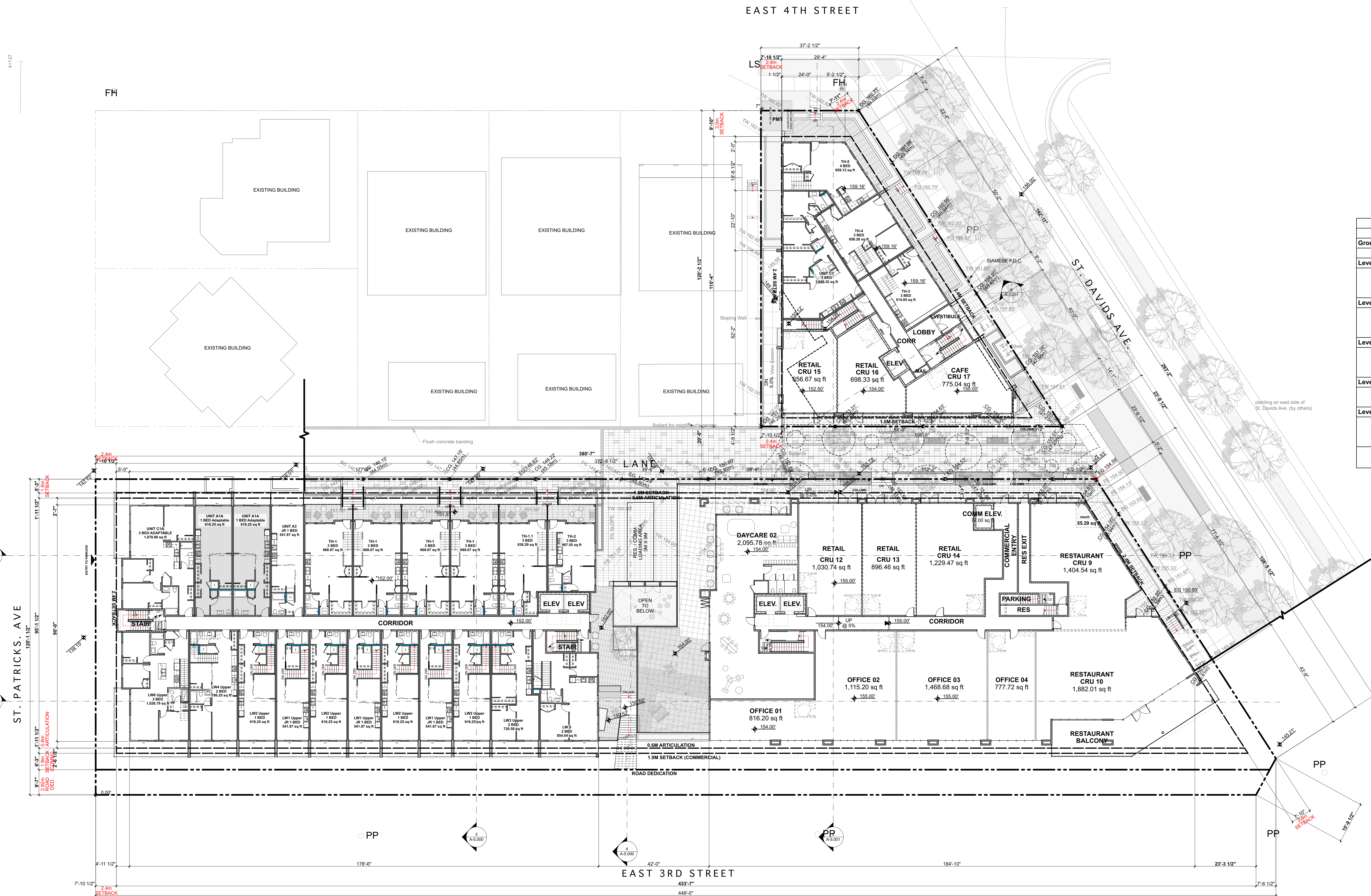
ARCHITECTURE INC.

2330-200 Granville Street
Vancouver, BC, V6C 1S4
www.integra-arch.com
Telephone: 604 688 4220

COPYRIGHT RESERVED. THIS DRAWING AND DESIGN IS AND IT ALL TIMES REMAINS THE EXCLUSIVE PROPERTY OF INTEGRARCHITECTURE INC. AND CANNOT BE USED WITHOUT THE ARCHITECT'S CONSENT.



[PROJECT TEAM]



GFA		
LEVEL	BLDG	AREA
Ground Floor		
	WEST	33,763.25
Level 1		
	EAST	15,360.44
	NORTH	6,005.03
	WEST	17,139.29
Level 2		
	EAST	17,387.00
	NORTH	6,628.14
	WEST	18,284.51
Level 3		
	EAST	17,321.75
	NORTH	5,221.17
	WEST	18,046.22
Level 4		
	EAST	16,982.60
	WEST	15,991.47
Level 5		
	EAST	15,766.52
	WEST	164.25
	WEST	486.87
		204,548.51 sq ft

Level 1 Plan - Overall

SCALE: 1/16" = 1'-0"

[ARCHITECT SEAL]

[CLIENT]

Cascadia Green
Development

[PROJECT]

402-438 E 3rd St &
341-343 St Davids Ave

North Vancouver, BC

[TITLE]

LEVEL 1 PLAN - OVERALL

471 [PROJECT]

1/16" = 1'-0" [SCALE]

2020-12-21 [DATE]

City Review [ISSUE]

[DRAWING]

A-2.015

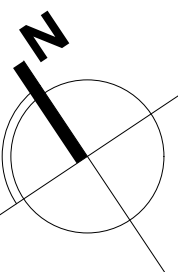


Integra

ARCHITECTURE INC.

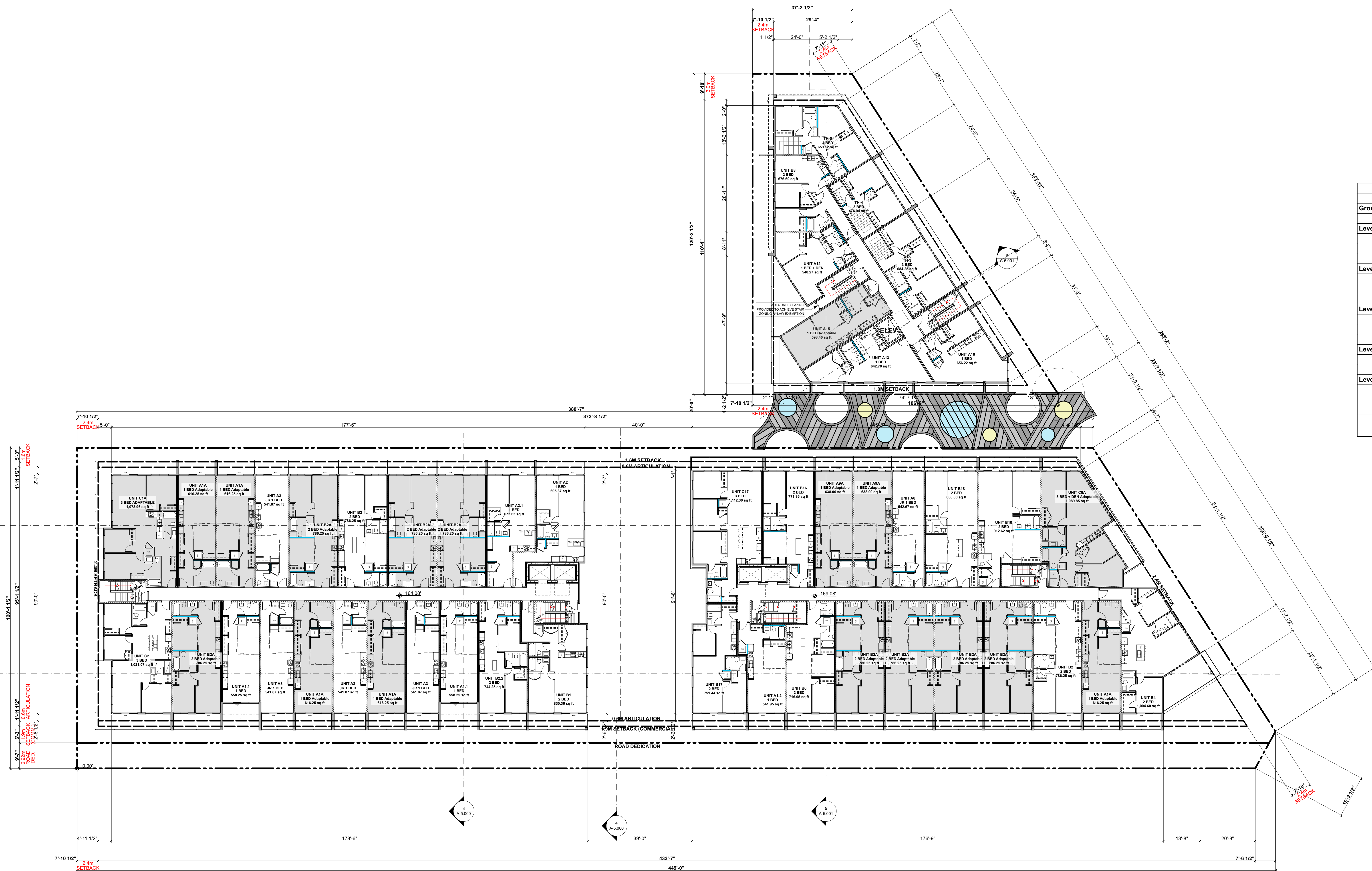
2330-200 Granville Street
Vancouver, BC, V6C 1S4
www.integra-arch.com
Telephone: 604 688 4220

COPYRIGHT RESERVED. THIS DRAWING AND DESIGN IS AND IT ALL TIMES REMAINS THE EXCLUSIVE PROPERTY OF INTEGRATION ARCHITECTURE INC. AND CANNOT BE USED WITHOUT THE ARCHITECT'S CONSENT.



[PROJECT TEAM]

GFA		
LEVEL	BLDG	AREA
Ground Floor		
	WEST	33,763.25
Level 1		
	EAST	15,360.44
	NORTH	6,005.03
	WEST	17,139.29
Level 2		
	EAST	17,387.00
	NORTH	6,628.14
	WEST	18,284.51
Level 3		
	EAST	17,321.75
	NORTH	5,221.17
	WEST	18,046.22
Level 4		
	EAST	16,982.60
	WEST	15,991.47
Level 5		
	EAST	15,766.52
	WEST	164.25
	WEST	486.87
		204,548.51 sq ft



Level 2 Plan - Overall

SCALE: 1/16" = 1'-0"

[ARCHITECT SEAL]

[CLIENT]

Cascadia Green Development

[PROJECT]

402-438 E 3rd St & 341-343 St Davids Ave

North Vancouver, BC

[TITLE]

LEVEL 2 PLAN - OVERALL

471 [PROJECT]

1/16" = 1'-0" [SCALE]

2020-12-21 [DATE]

City Review [ISSUE]

[DRAWING]

A-2.020

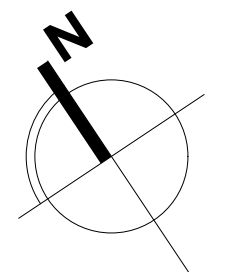


Integra

ARCHITECTURE INC.

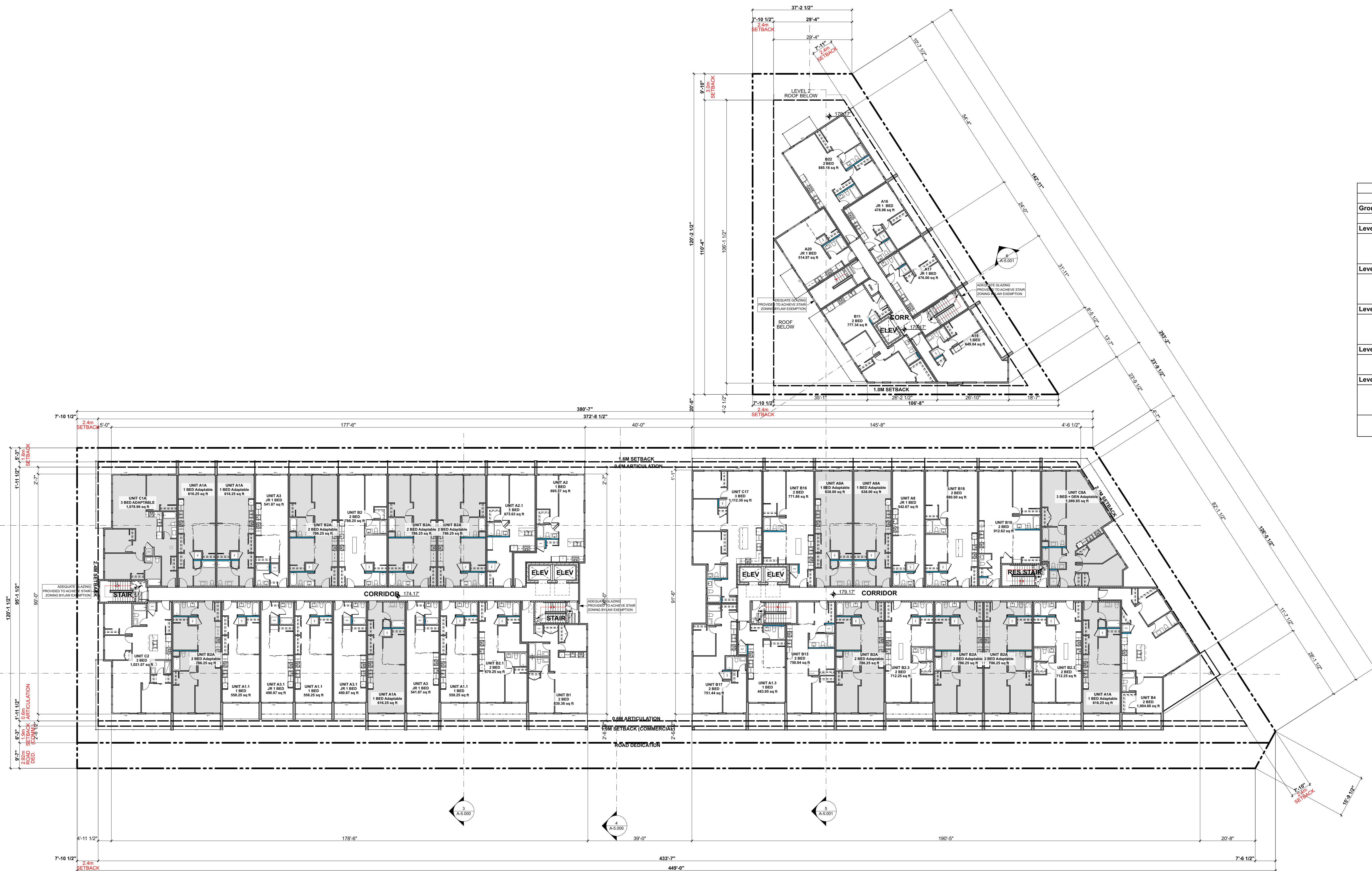
2330-200 Granville Street
Vancouver, BC, V6C 1S4
www.integra-arch.com
Telephone: 604 688 4220

COPYRIGHT RESERVED. THIS DRAWING AND DESIGN IS AND IT ALL TIMES REMAINS THE EXCLUSIVE PROPERTY OF INTEGRA ARCHITECTURE INC. AND CANNOT BE USED WITHOUT THE ARCHITECT'S CONSENT.



[PROJECT TEAM]

GFA		
LEVEL	BLDG	AREA
Ground Floor		
	WEST	33,763.25
Level 1		
	EAST	15,360.44
	NORTH	6,005.03
	WEST	17,139.29
Level 2		
	EAST	17,387.00
	NORTH	6,628.14
	WEST	18,284.51
Level 3		
	EAST	17,321.75
	NORTH	5,221.17
	WEST	18,046.22
Level 4		
	EAST	16,982.60
	WEST	15,991.47
Level 5		
	EAST	15,766.52
	WEST	164.25
	WEST	486.87
		204,548.51 sq ft



Level 3 Plan - Overall

SCALE: 1/16" = 1'-0"

[ARCHITECT SEAL]

[CLIENT]

Cascadia Green Development

[PROJECT]

402-438 E 3rd St & 341-343 St Davids Ave

North Vancouver, BC

[TITLE]

LEVEL 3 PLAN - OVERALL

[PROJECT]

471

[SCALE]

1/16" = 1'-0"

[DATE]

2020-12-21

[ISSUE]

City Review

[DRAWING]

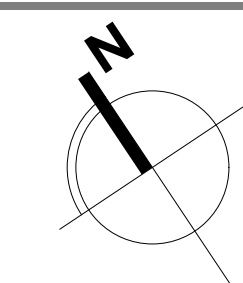


Integra

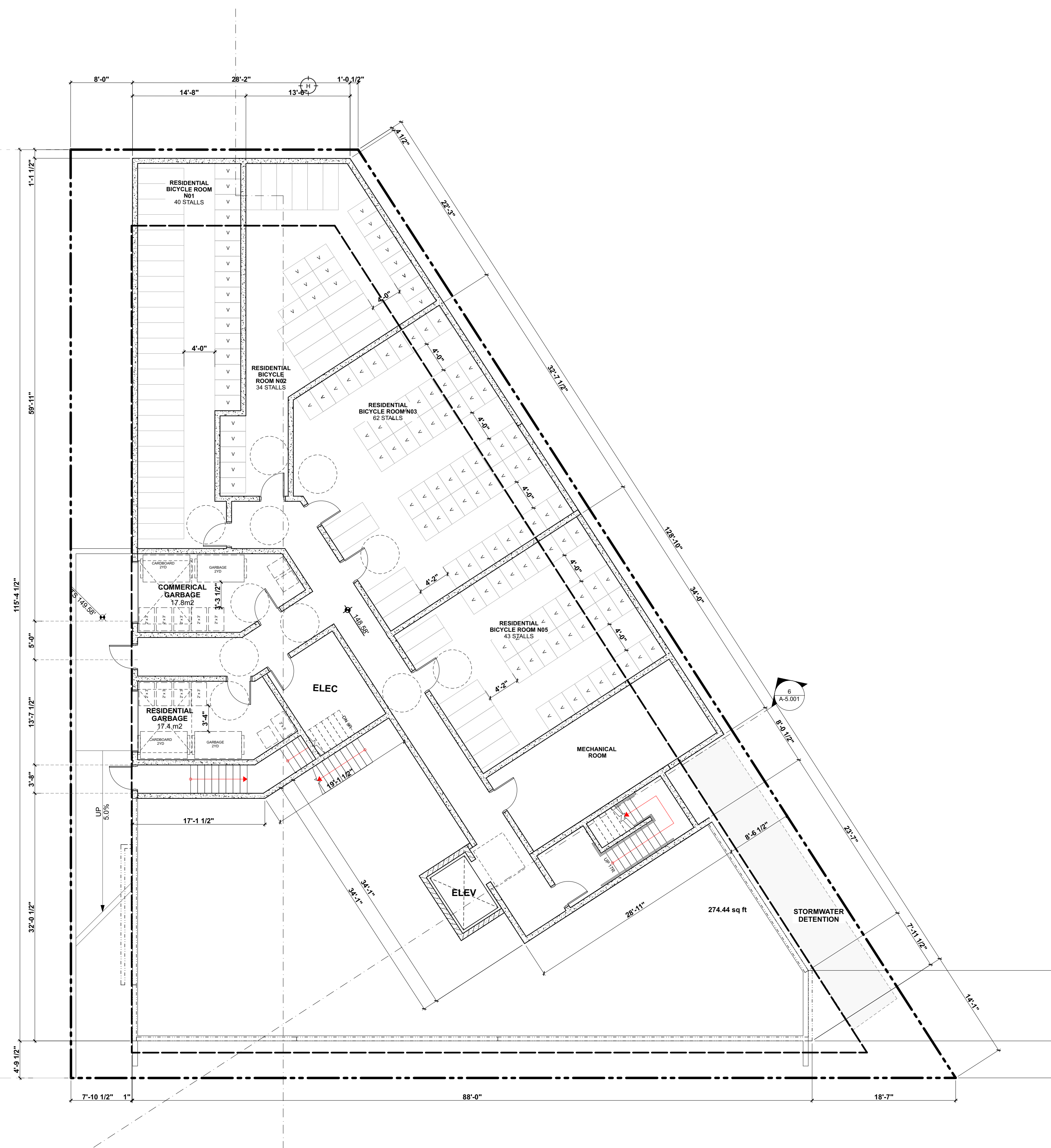
ARCHITECTURE INC.

2330-200 Granville Street
Vancouver, BC, V6C 1S4
www.integra-arch.com
Telephone: 604 688 4220

COPYRIGHT RESERVED. THIS DRAWING AND DESIGN IS AND AT ALL TIMES REMAINS THE EXCLUSIVE PROPERTY OF INTEGRAL ARCHITECTURE INC. AND CANNOT BE USED WITHOUT THE ARCHITECT'S CONSENT.



[PROJECT TEAM]



[ARCHITECT SEAL]

[CLIENT]

Cascadia Green
Development

[PROJECT]

402-438 E 3rd St &
341-343 St Davids Ave

North Vancouver, BC

[TITLE]

NORTH BUILDING - GROUND FLOOR PLAN

[PROJECT]

471

[SCALE]

1/8" = 1'-0"

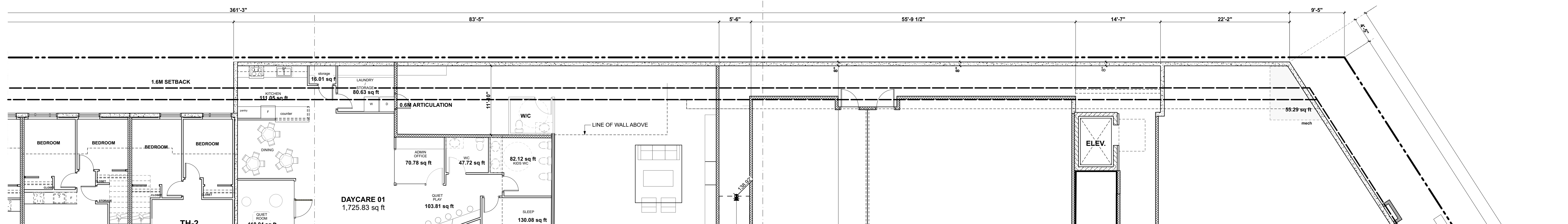
[DATE]

2020-12-21

[ISSUE]

COORDINATION

[DRAWING]

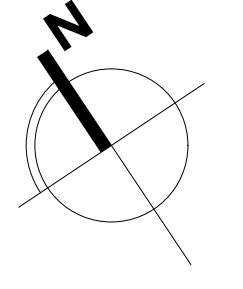




Integra

ARCHITECTURE INC.
2330-200 Granville Street
Vancouver, BC, V6C 1S4
www.integra-arch.com
Telephone: 604 688 4220

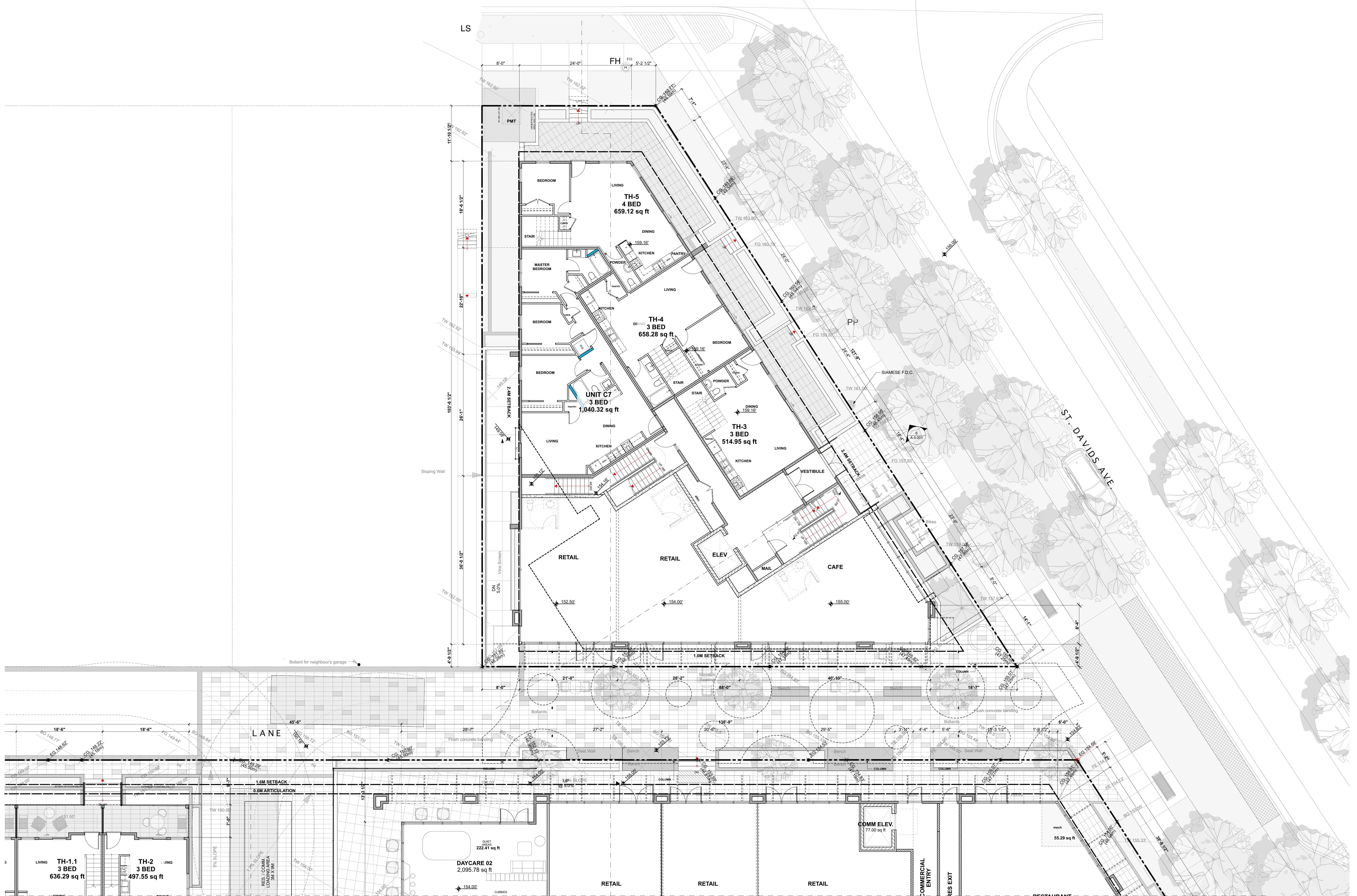
COPYRIGHT RESERVED. THIS DRAWING AND DESIGN IS AND IT ALL TIMES REMAINS THE EXCLUSIVE PROPERTY OF INTEGRATA ARCHITECTURE INC. AND CANNOT BE USED WITHOUT THE ARCHITECT'S CONSENT.



[PROJECT TEAM]

EAST 4TH STREET

LS



[ARCHITECT SEAL]

[CLIENT]

Cascadia Green Development

[PROJECT]

402-438 E 3rd St & 341-343 St Davids Ave

North Vancouver, BC

[TITLE]

NORTH BUILDING - LEVEL 1 PLAN

[PROJECT]

471

[SCALE]

1/8" = 1'-0"

[DATE]

2020-12-21

[ISSUE]

COORDINATION

[DRAWING]

A-2.310

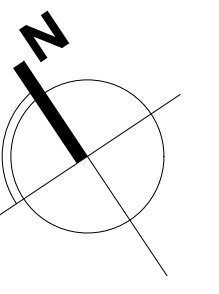


Integra

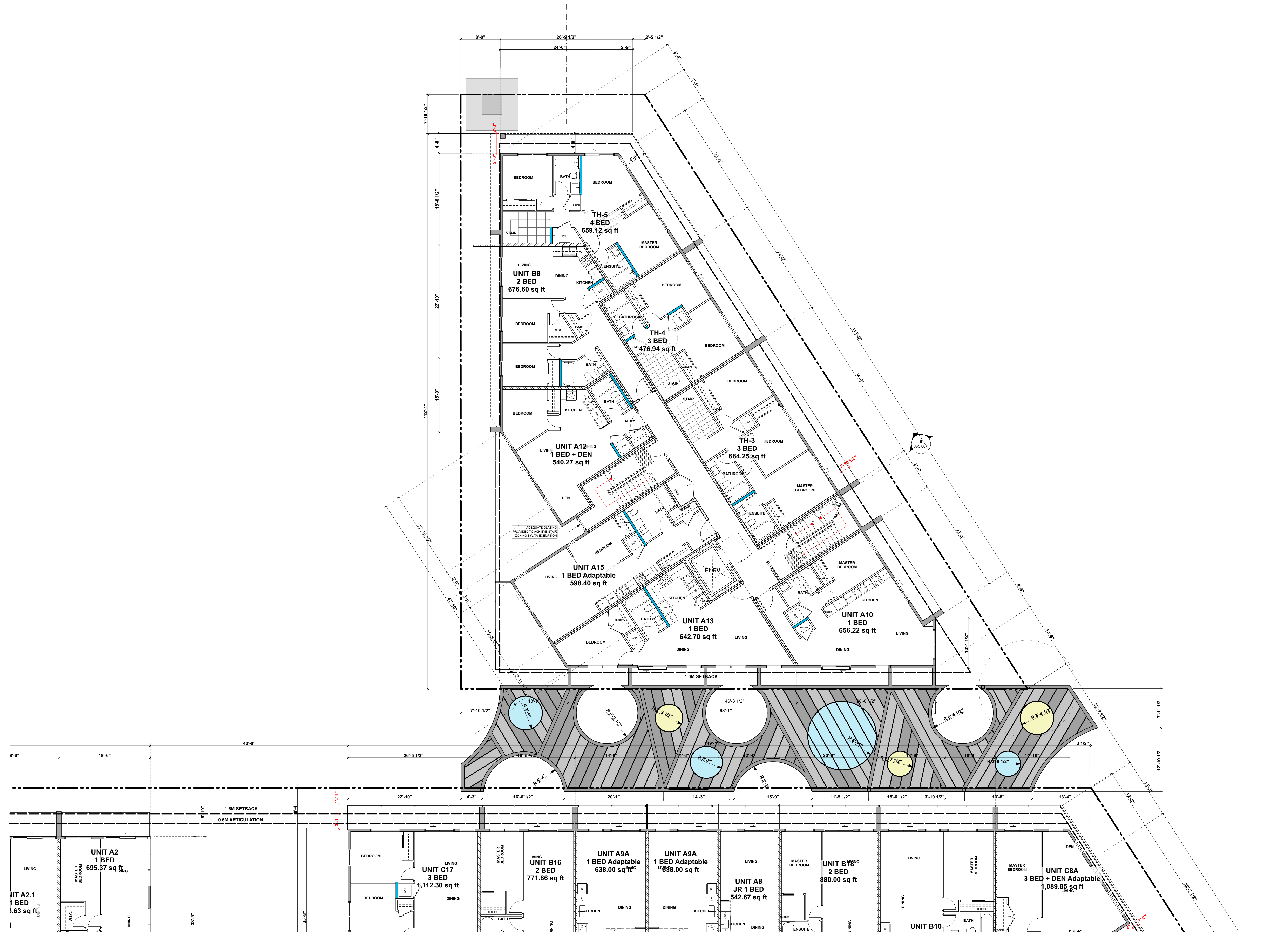
ARCHITECTURE INC.

2330-200 Granville Street
Vancouver, BC, V6C 1S4
www.integra-arch.com
Telephone: 604 688 4220

COPYRIGHT RESERVED. THIS DRAWING AND DESIGN IS AND AT ALL TIMES REMAINS THE EXCLUSIVE PROPERTY OF INTEGRATA ARCHITECTURE INC. AND CANNOT BE USED WITHOUT THE ARCHITECT'S CONSENT.



[PROJECT TEAM]



[ARCHITECT SEAL]

[CLIENT]

Cascadia Green Development

[PROJECT]

402-438 E 3rd St & 341-343 St Davids Ave

North Vancouver, BC

[TITLE]

NORTH BUILDING - LEVEL 2 PLAN

471 [PROJECT]

1/8" = 1'-0" [SCALE]

2020-12-21 [DATE]

City Review [ISSUE]

[DRAWING]

A-2.320

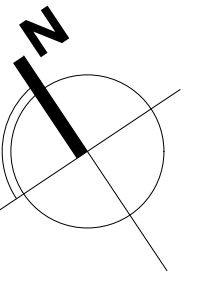


Integra

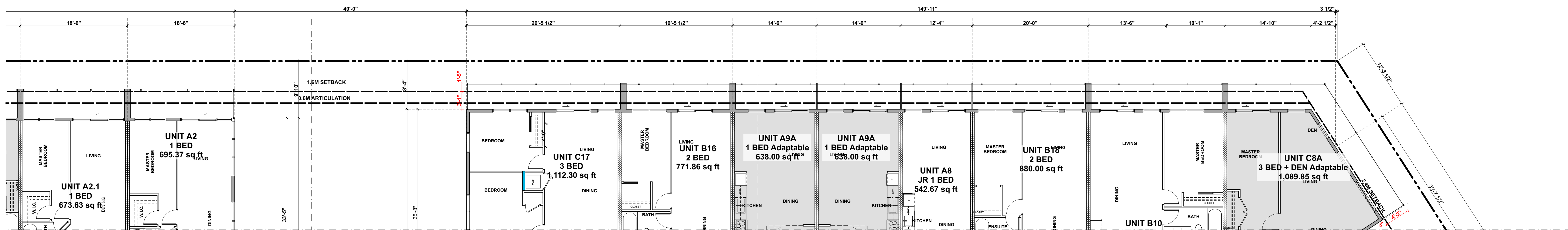
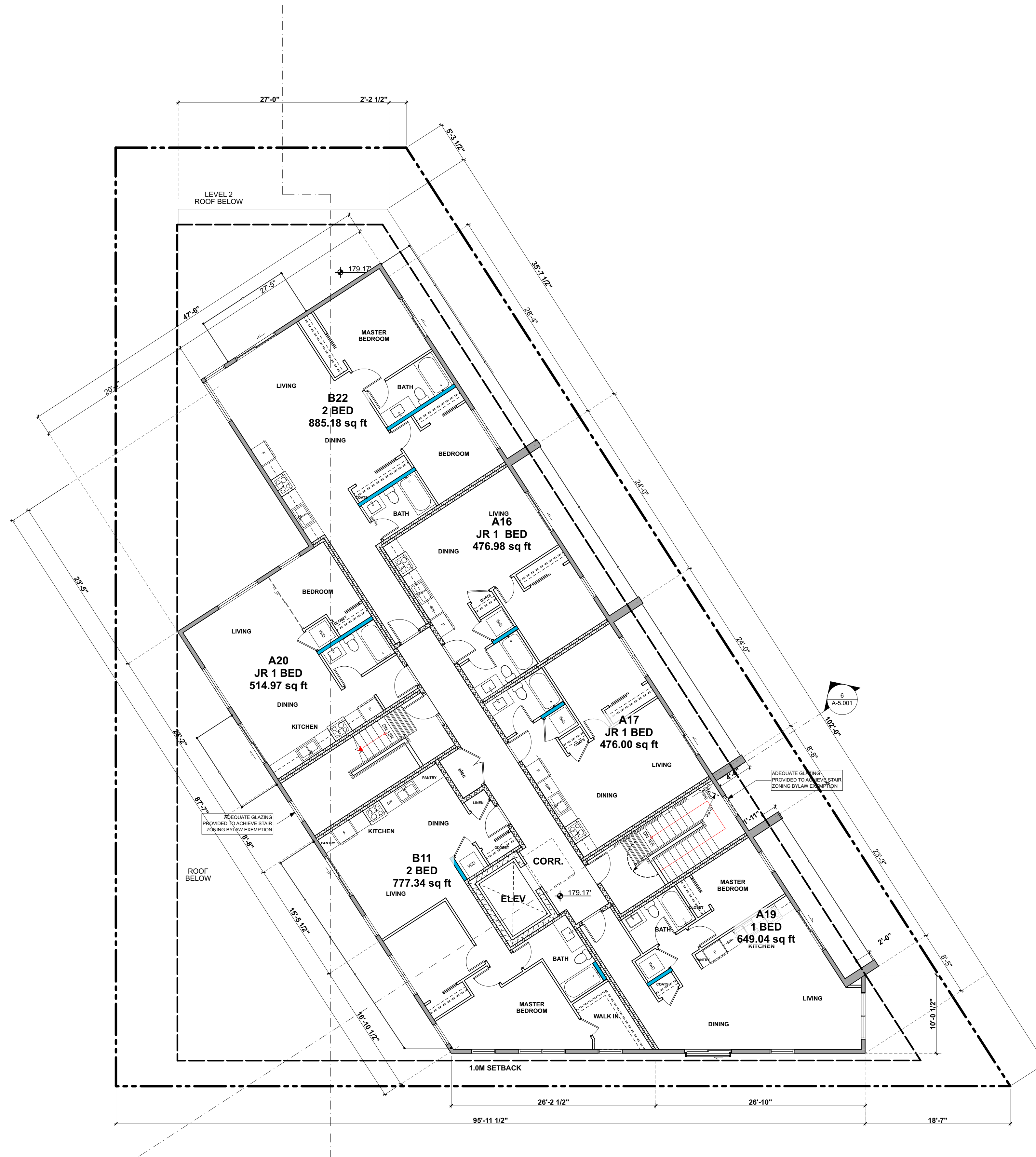
ARCHITECTURE INC.

2330-200 Granville Street
Vancouver, BC, V6C 1S4
www.integra-arch.com
Telephone: 604 688 4220

COPYRIGHT RESERVED. THIS DRAWING AND DESIGN IS AND AT ALL TIMES REMAINS THE EXCLUSIVE PROPERTY OF INTEGRATION ARCHITECTURE INC. AND CANNOT BE USED WITHOUT THE ARCHITECT'S CONSENT.



[PROJECT TEAM]



[ARCHITECT SEAL]

[CLIENT]

Cascadia Green
Development

[PROJECT]

402-438 E 3rd St &
341-343 St Davids Ave

North Vancouver, BC

[TITLE]

NORTH BUILDING - LEVEL 3 PLAN

[PROJECT]

471

[SCALE]

1/8" = 1'-0"

[DATE]

2020-12-21

[ISSUE]

City Review

[DRAWING]

A-2.330



Integra

ARCHITECTURE INC.

2330-200 Granville Street
Vancouver, BC, V6C 1S4
www.integra-arch.com
Telephone: 604 688 4220

COPYRIGHT RESERVED. THIS DRAWING AND DESIGN IS AND AT ALL TIMES REMAINS THE EXCLUSIVE PROPERTY OF INTEGRATION ARCHITECTURE INC. AND CANNOT BE USED WITHOUT THE ARCHITECT'S CONSENT.

[PROJECT TEAM]

[ARCHITECT SEAL]

[CLIENT]

Cascadia Green
Development

[PROJECT]

402-438 E 3rd St &
341-343 St Davids Ave

North Vancouver, BC

[TITLE]

NORTH BUILDING - LEVEL 4 PLAN

471 [PROJECT]

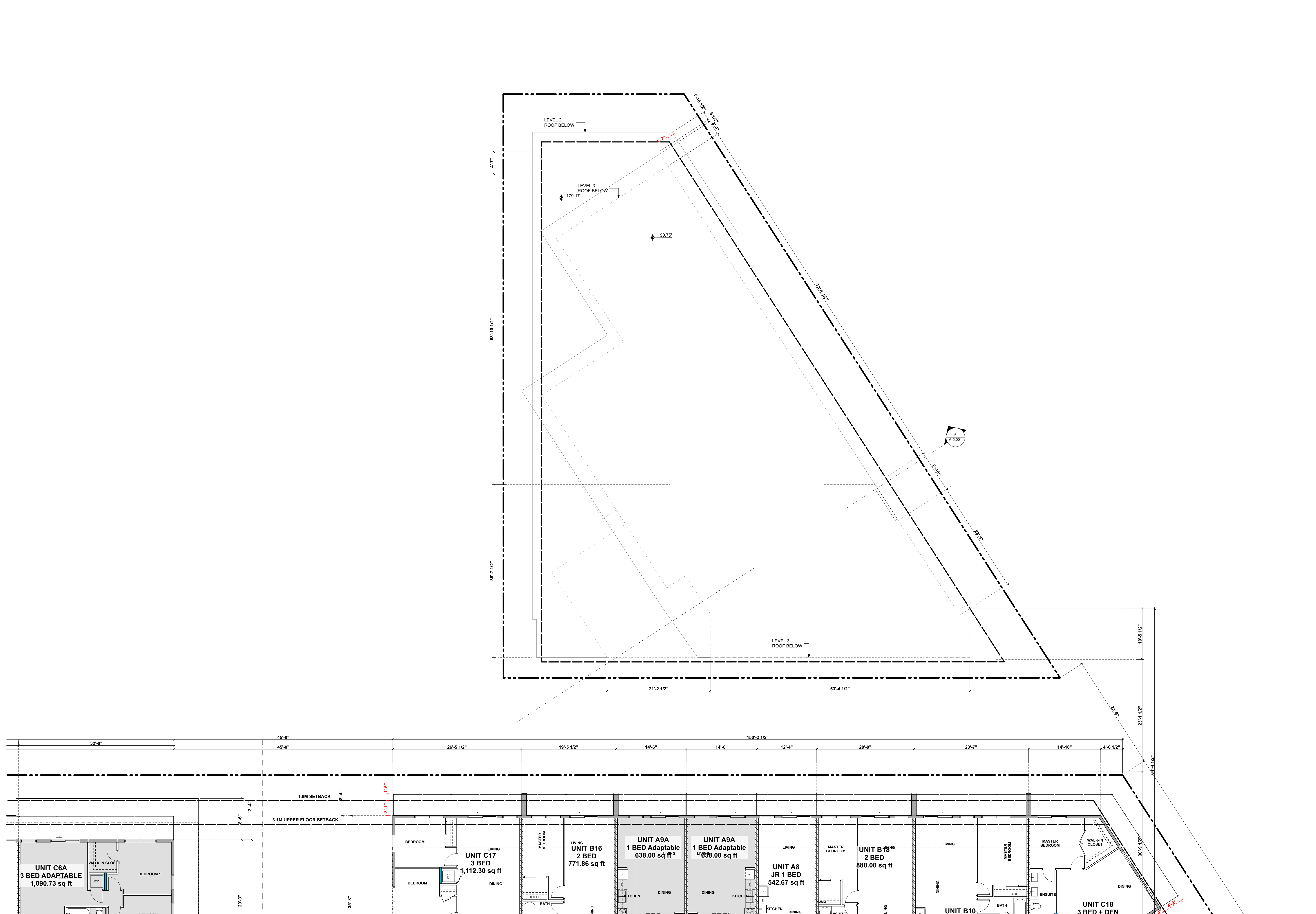
Not To Scale [SCALE]

2020-12-21 [DATE]

City Review [ISSUE]

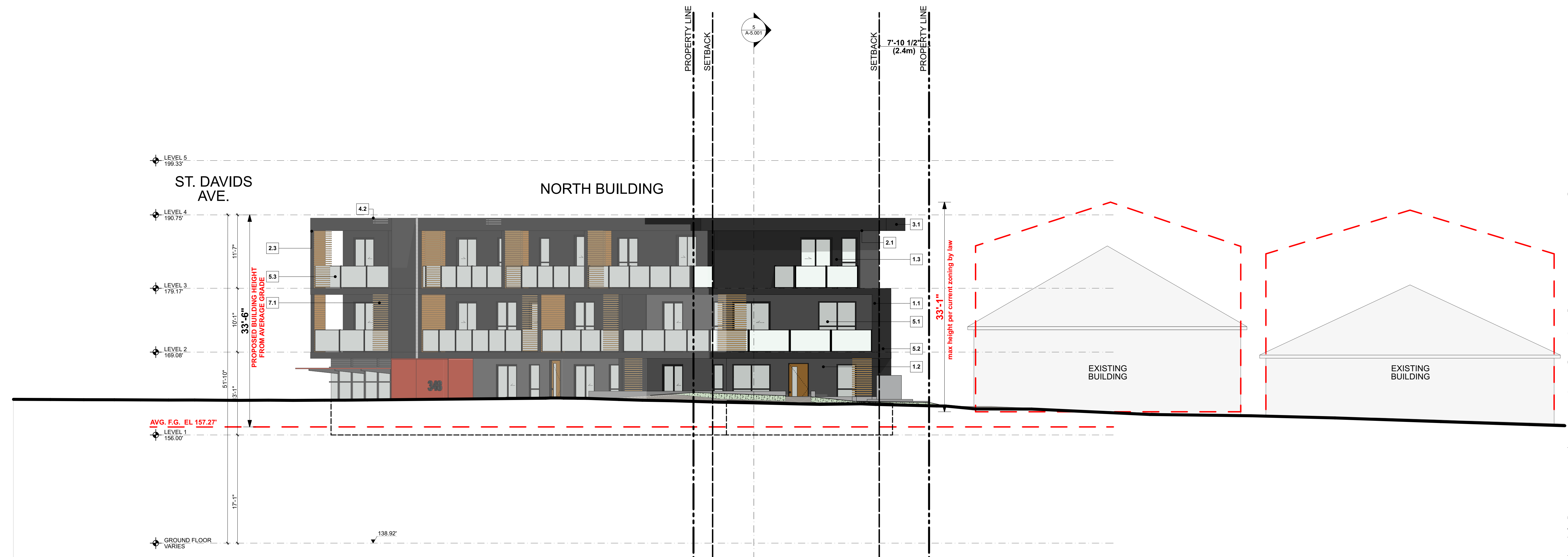
[DRAWING]

A-2.340





1 NORTH BUILDING - SOUTH ELEVATION
SCALE: 1/8" = 1'-0"



2 NORTH BUILDING - NORTH ELEVATION
SCALE: 1/8" = 1'-0"

Material and Colour Legend				
Code	Material (Name)	Finish (Name)	Location	
1.0 CLADDING				
1.1	White Brick	White	Exterior Walls (Stack Bond)	
1.2	Grey Fibre Cement Panel	BM - Deep Silver 2124-30	Exterior Walls	
1.3	Charcoal Fibre Cement Panel	BM - Gray 2121-10	Exterior Walls	
1.7	Cedar Fibre Cement Boards (Wood finish)	Summer Wheat	Exterior Walls	
2.0 SOFFIT				
2.1	Cedar Fibre Cement Boards (Wood finish)	Summer Wheat	Underside of balcony soffit	
2.2	Cedar Fibre Cement Boards (Wood finish)	Summer Wheat	Underside of upper eyebrow roof	
2.3	Light Cherry Metal (Wood finish)	Light Cherry	Underside of bridge over lane with integral trellis	
3.0 TRIMS / FLASHINGS				
3.1	Charcoal Combed Face Wood / Flashing	BM - Gray 2121-10	Roofs / Overhangs / Flashings	
3.1	Grey Combed Face Wood / Flashing	BM - Deep Silver 2124-30	Roofs / Overhangs / Flashings	
4.0 ROOFS / DECKS				
4.1	Grey 2 Ply SBS w/ pavers	TBC	Flat Roofs / Decks over living spaces	
4.2	Light Grey 2 Ply SBS	TBC	2 Ply SBS roofing membrane at flat roofs	
5.0 WINDOWS / GLAZING				
5.1	Charcoal Vinyl Windows	Charcoal	Prefinished vinyl windows	
5.2	Charcoal Storefront	Charcoal	Aluminum storefront & Doors	
5.3	Clear Railings	-	Clear Glazing w/ anodized edge trim	
6.0 DOORS				
6.1	Cedar Doors	TBD	Live Work Entry Doors	
6.2	Black Wood Doors with Lite	TBD	TH Entry Doors	
7.0 SCREENS / CANOPIES / STAIRS				
7.1	Light Cherry / Charcoal Patio Screen	TBD	Faux wood / Charcoal Metal screens	
7.2	Red / Charcoal Live work & Commercial Canopies	BM Pomegranate AF -295	Canopies	
7.3	Red / Charcoal Exterior Metal Stairs	BM Pomegranate AF -295	Folded Metal stair w/ Perforated metal guard	
7.4	Charcoal Metal Screen	Painted to match 1.3	Metal Screen at Loading Bay	
8.0 SITE WORK				
8.1	Concrete Architectural Concrete	Finished Concrete	Patio walls / At grade planters	
8.2	Grey Planters	TBD	Roof Deck Planters	



Integra
ARCHITECTURE INC.

2330-200 Granville Street
Vancouver, BC, V6C 1S4
www.integra-arch.com
Telephone: 604 688 4220

COPYRIGHT RESERVED. THIS DRAWING AND DESIGN IS AND IT ALL THERE REMAINS THE EXCLUSIVE PROPERTY OF INTEGRA ARCHITECTURE INC. AND CANNOT BE USED WITHOUT THE ARCHITECT'S CONSENT.

[PROJECT TEAM]

[ARCHITECT SEAL]

[CLIENT]

Cascadia Green
Development

[PROJECT]

402-438 E 3rd St &
341-343 St Davids Ave

North Vancouver, BC

[TITLE]

**NORTH BUILDING
ELEVATIONS**

471 [PROJECT]

1/8" = 1'-0" [SCALE]

2020-12-21 [DATE]

City Review [ISSUE]

[DRAWING]

A-4.300



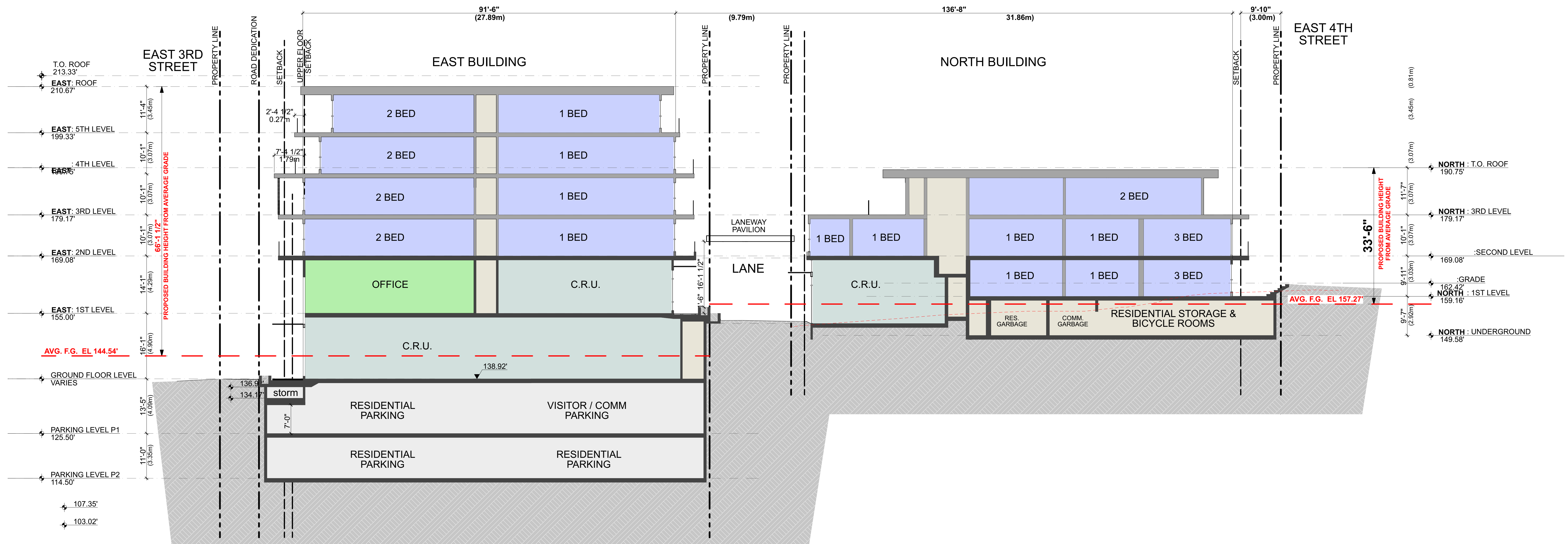
Integra

ARCHITECTURE INC.

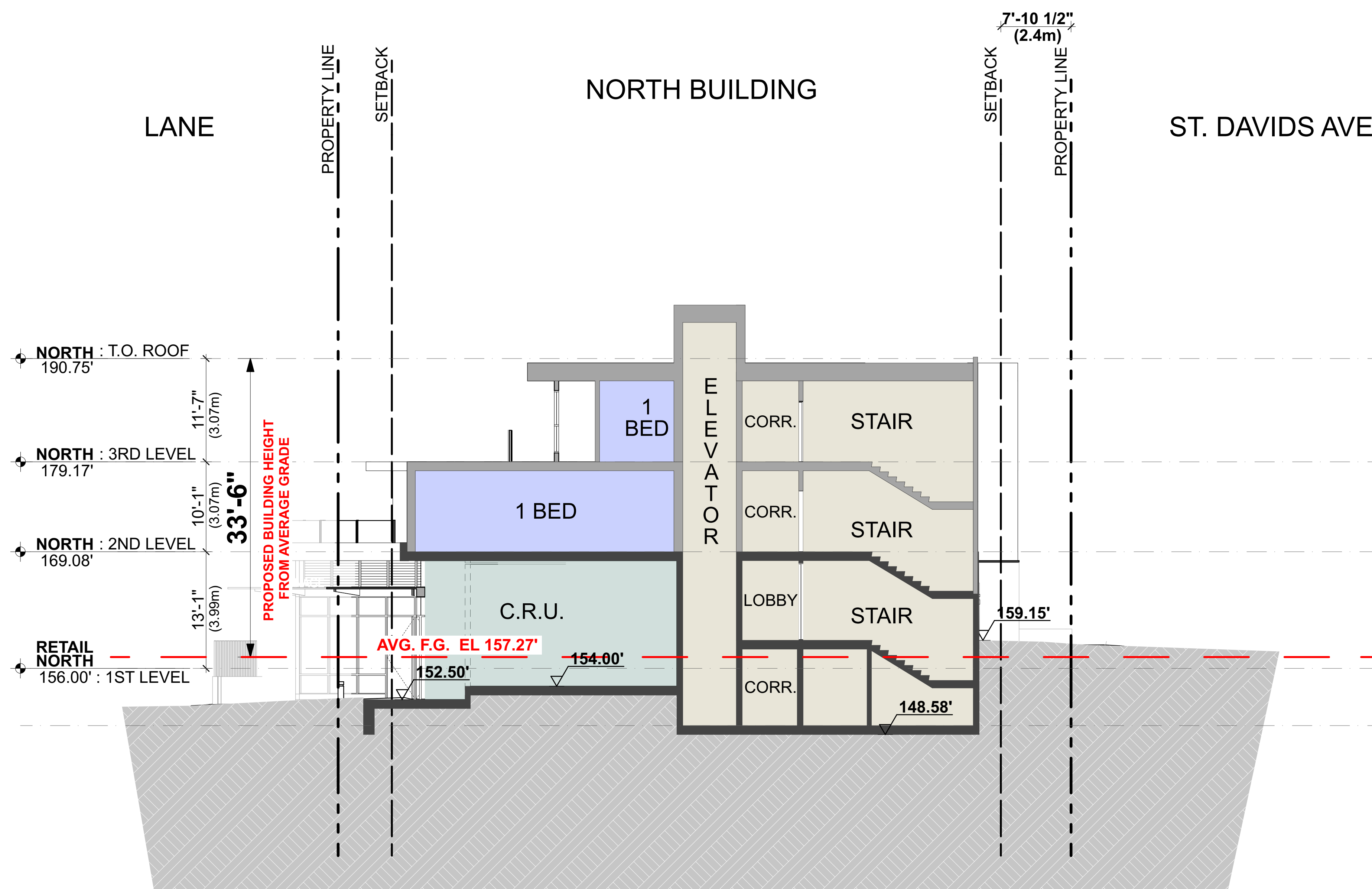
2330-200 Granville Street
 Vancouver, BC, V6C 1S4
 www.integra-arch.com
 Telephone: 604 688 4220

COPYRIGHT RESERVED. THIS DRAWING AND DESIGN IS AND AT ALL TIMES REMAINS THE EXCLUSIVE PROPERTY OF INTEGRATA ARCHITECTURE INC. AND CANNOT BE USED WITHOUT THE ARCHITECT'S CONSENT.

(PROJECT TEAM)



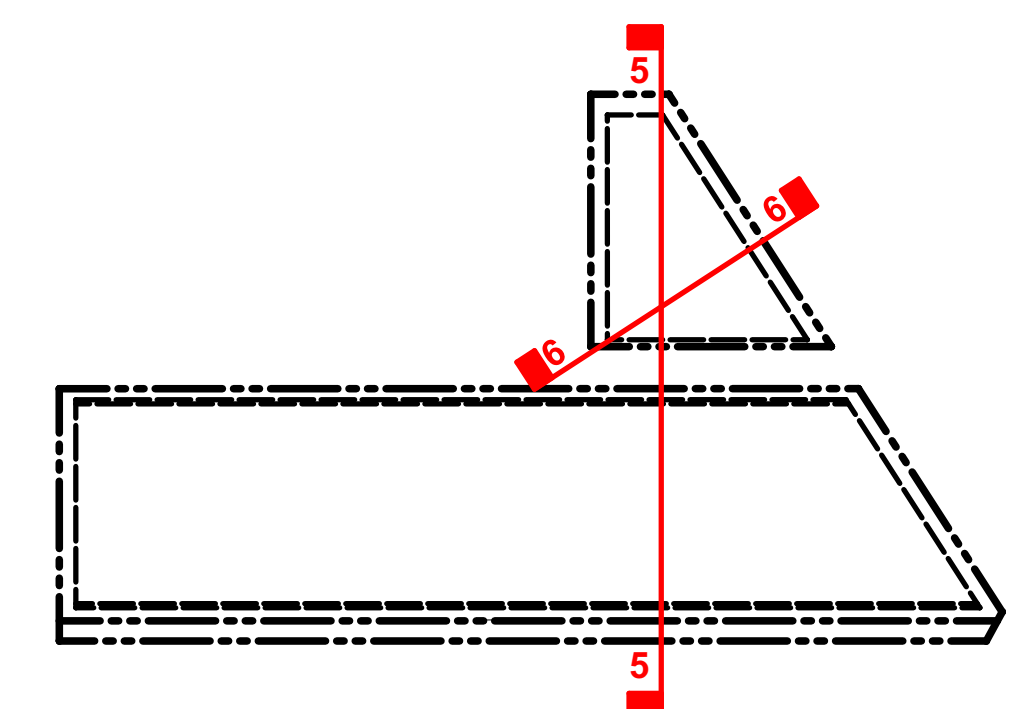
5 SITE SECTION 05
 SCALE: 3/32" = 1'-0"



6 SITE SECTION 06
 SCALE: 1/8" = 1'-0"

PROGRAM LEGEND

Blue square	CONDO UNIT
Light blue square	TOWNHOME
Light green square	LIVE WORK
Light yellow square	COMMON AREA
Light grey square	C.R.U.
Green square	OFFICES
Dark grey square	PARKADE



(ARCHITECT SEAL)

(CLIENT)

Cascadia Green
 Development

(PROJECT)

402-438 E 3rd St &
 341-343 St Davids Ave

North Vancouver, BC

(TITLE)

SITE SECTIONS

471 (PROJECT)

AS NOTED (DATE)

2020-12-21 (DATE)

City Review (ISSUE)

(DRAWING)

A-5.001

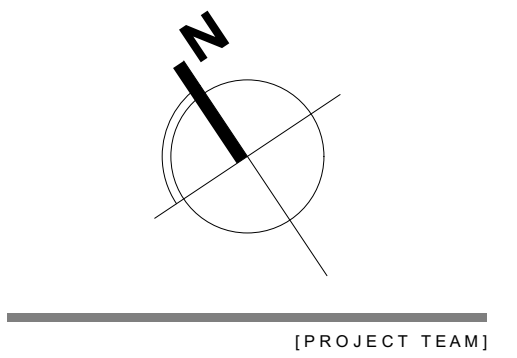


Integra

ARCHITECTURE INC.

2330-200 Granville Street
Vancouver, BC, V6C 1S4
www.integra-arch.com
Telephone: 604 688 4220

COPYRIGHT RESERVED. THIS DRAWING AND DESIGN IS AND IT ALL TIMES REMAINS THE EXCLUSIVE PROPERTY OF INTEGRATA ARCHITECTURE INC. AND CANNOT BE USED WITHOUT THE ARCHITECT'S CONSENT.



EAST				
LEVEL	BLDG	Zone Category	Name	AREA
Level 1	EAST	Circulation	CORRIDOR	1,829.53
	EAST	Commercial	COMMERCIAL	3,258.50
	EAST	Commercial	COMMERCIAL	7,840.08
	EAST	Commercial	DAYCARE	1,569.20
Level 2	EAST	Circulation	CORRIDOR	1,130.33
	EAST	Residential	APARTMENTS	14,222.08
Level 3	EAST	Circulation	CORRIDOR	1,281.19
	EAST	Residential	APARTMENTS	13,877.53
Level 4	EAST	Circulation	CORRIDOR	1,234.63
	EAST	Residential	APARTMENTS	13,568.90
Level 5	EAST	Circulation	CORRIDOR	1,174.20
	EAST	Residential	APARTMENTS	11,973.33
				72,959.50 sq ft

NORTH				
LEVEL	BLDG	Zone Category	Name	AREA
Level 1	NORTH	Circulation	CORRIDOR	196.45
	NORTH	Commercial	COMMERCIAL	2,158.14
	NORTH	Residential	APARTMENTS	1,040.29
	NORTH	Residential	TOWNHOUSES	1,831.46
Level 2	NORTH	Circulation	CORRIDOR	365.52
	NORTH	Residential	APARTMENTS	1,216.76
	NORTH	Residential	APARTMENTS	1,897.19
	NORTH	Residential	TOWNHOUSES	1,821.08
Level 3	NORTH	Circulation	CORRIDOR	339.76
	NORTH	Residential	APARTMENTS	1,425.35
	NORTH	Residential	APARTMENTS	2,353.06
				14,645.06 sq ft

WEST				
LEVEL	BLDG	Zone Category	Name	AREA
Ground Floor	WEST	Circulation	CORRIDOR	116.33
	WEST	Circulation	CORRIDOR	1,040.74
Level 1	WEST	Circulation	CORRIDOR	1,068.31
	WEST	Residential	APARTMENTS	2,834.82
	WEST	Residential	LIVE/WORK	7,428.49
	WEST	Residential	TOWNHOUSES	3,788.27
Level 2	WEST	Circulation	CORRIDOR	1,070.08
	WEST	Residential	APARTMENTS	7,321.52
	WEST	Residential	APARTMENTS	7,324.77
Level 3	WEST	Circulation	CORRIDOR	1,069.96
	WEST	Residential	APARTMENTS	7,087.51
	WEST	Residential	APARTMENTS	7,324.72
Level 4	WEST	Circulation	CORRIDOR	1,072.82
	WEST	Residential	APARTMENTS	6,173.31
	WEST	Residential	APARTMENTS	6,214.49
Level 5	WEST	Circulation	CORRIDOR	308.30
				61,244.44 sq ft



GFA		
LEVEL	BLDG	AREA
Ground Floor	WEST	33,763.25
	EAST	15,360.44
Level 1	NORTH	6,005.03
	WEST	17,139.29
Level 2	EAST	17,387.00
	NORTH	6,628.14
	WEST	18,284.51
Level 3	EAST	17,321.75
	NORTH	5,221.17
	WEST	18,046.22
Level 4	EAST	16,982.60
	WEST	15,991.47
Level 5	EAST	15,766.52
	WEST	164.25
	WEST	486.87
		204,548.51 sq ft

Level 1 Overlay

SCALE: 1/16" = 1'-0"

[ARCHITECT SEAL]

[CLIENT]

Cascadia Green Development

[PROJECT]

402-438 E 3rd St & 341-343 St Davids Ave

North Vancouver, BC

[TITLE]

LEVEL 1 AREA OVERLAY

471 [PROJECT]

1/16" = 1'-0" [SCALE]

2020-12-21 [DATE]

City Review [ISSUE]

[DRAWING]

A-9.015

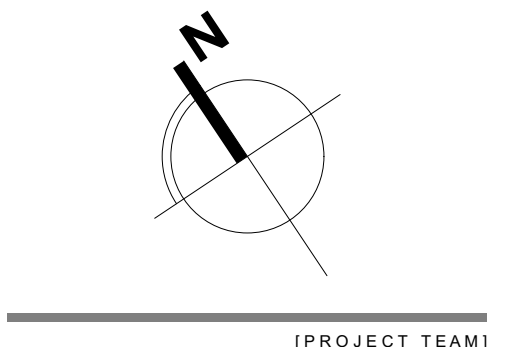


Integra

ARCHITECTURE INC.

2330-200 Granville Street
Vancouver, BC, V6C 1S4
www.integra-arch.com
Telephone: 604 688 4220

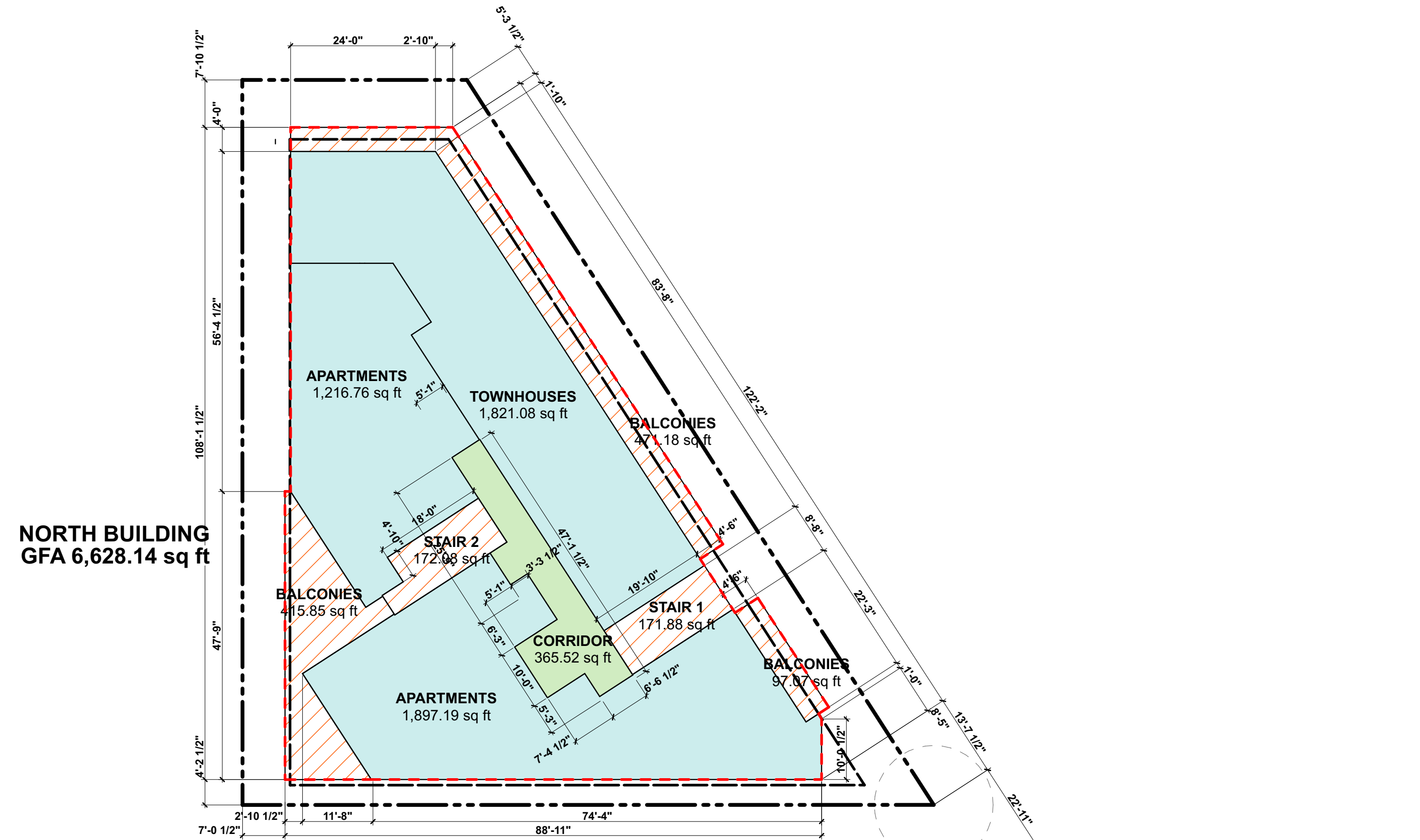
COPYRIGHT RESERVED. THIS DRAWING AND DESIGN IS AND IT ALL TIMES REMAINS THE EXCLUSIVE PROPERTY OF INTEGRATA ARCHITECTURE INC. AND CANNOT BE USED WITHOUT THE ARCHITECT'S CONSENT.



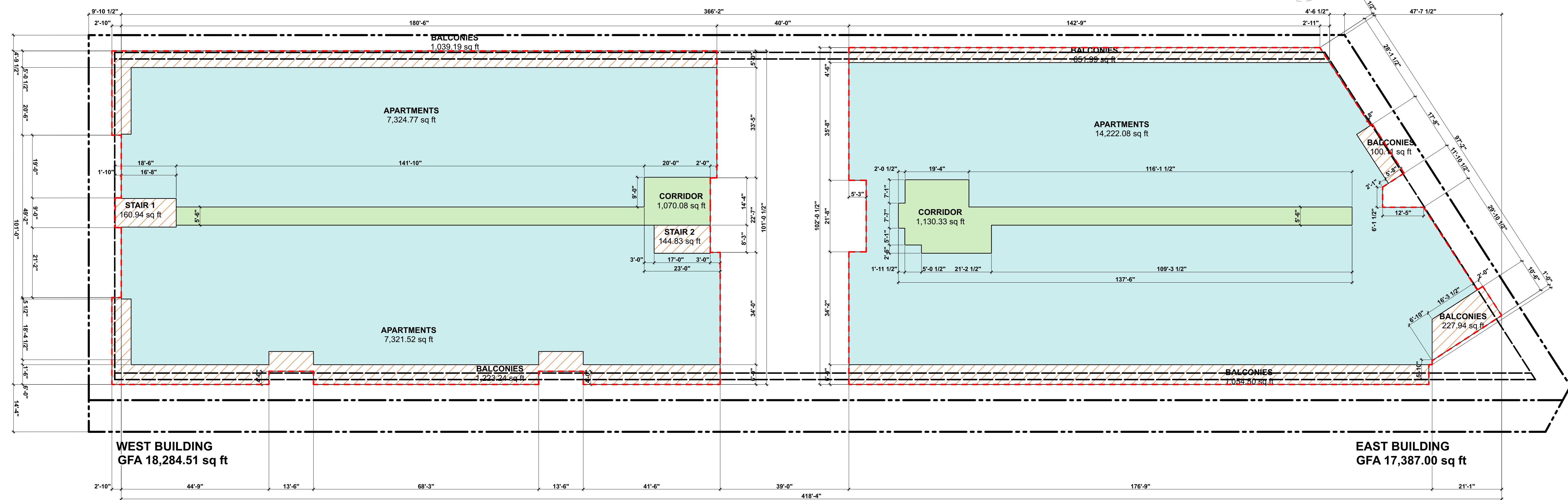
EAST				
LEVEL	BLDG	Zone Category	Name	AREA
Level 1	EAST	Circulation	CORRIDOR	1,829.53
	EAST	Commercial	COMMERCIAL	3,258.50
	EAST	Commercial	COMMERCIAL	7,840.08
	EAST	Commercial	DAYCARE	1,569.20
Level 2	EAST	Circulation	CORRIDOR	1,130.33
	EAST	Residential	APARTMENTS	14,222.08
Level 3	EAST	Circulation	CORRIDOR	1,281.19
	EAST	Residential	APARTMENTS	13,877.53
Level 4	EAST	Circulation	CORRIDOR	1,234.63
	EAST	Residential	APARTMENTS	13,568.90
Level 5	EAST	Circulation	CORRIDOR	1,174.20
	EAST	Residential	APARTMENTS	11,973.33
				72,959.50 sq ft

NORTH				
LEVEL	BLDG	Zone Category	Name	AREA
Level 1	NORTH	Circulation	CORRIDOR	196.45
	NORTH	Commercial	COMMERCIAL	2,158.14
	NORTH	Residential	APARTMENTS	1,040.29
	NORTH	Residential	TOWNHOUSES	1,831.46
Level 2	NORTH	Circulation	CORRIDOR	365.52
	NORTH	Residential	APARTMENTS	1,216.76
	NORTH	Residential	APARTMENTS	1,897.19
	NORTH	Residential	TOWNHOUSES	1,821.08
Level 3	NORTH	Circulation	CORRIDOR	339.76
	NORTH	Residential	APARTMENTS	1,425.35
	NORTH	Residential	APARTMENTS	2,353.06
				14,645.06 sq ft

WEST				
LEVEL	BLDG	Zone Category	Name	AREA
Ground Floor	WEST	Circulation	CORRIDOR	116.33
	WEST	Circulation	CORRIDOR	1,040.74
Level 1	WEST	Circulation	CORRIDOR	1,068.31
	WEST	Residential	APARTMENTS	2,834.82
	WEST	Residential	LIVE/WORK	7,428.49
	WEST	Residential	TOWNHOUSES	3,788.27
Level 2	WEST	Circulation	CORRIDOR	1,070.08
	WEST	Residential	APARTMENTS	7,321.52
	WEST	Residential	APARTMENTS	7,324.77
Level 3	WEST	Circulation	CORRIDOR	1,069.96
	WEST	Residential	APARTMENTS	7,087.51
	WEST	Residential	APARTMENTS	7,324.72
Level 4	WEST	Circulation	CORRIDOR	1,072.82
	WEST	Residential	APARTMENTS	6,173.31
	WEST	Residential	APARTMENTS	6,214.49
Level 5	WEST	Circulation	CORRIDOR	308.30
				61,244.44 sq ft



GFA		
LEVEL	BLDG	AREA
Ground Floor	WEST	33,763.25
	EAST	15,360.44
Level 1	NORTH	6,005.03
	WEST	17,139.29
	EAST	17,387.00
Level 2	NORTH	6,628.14
	WEST	18,284.51
	EAST	17,321.75
Level 3	NORTH	5,221.17
	WEST	18,046.22
	EAST	16,982.60
Level 4	WEST	15,991.47
	EAST	15,766.52
Level 5	WEST	164.25
	WEST	486.87
	EAST	204,548.51 sq ft



Level 2 Overlay

SCALE: 1/16" = 1'-0"

[ARCHITECT SEAL]

[CLIENT]

Cascadia Green
Development

[PROJECT]

402-438 E 3rd St &
341-343 St Davids Ave

North Vancouver, BC

[TITLE]

**LEVEL 2 AREA
OVERLAY**

471 [PROJECT]

1/16" = 1'-0" [SCALE]

2020-12-21 [DATE]

City Review [ISSUE]

[DRAWING]

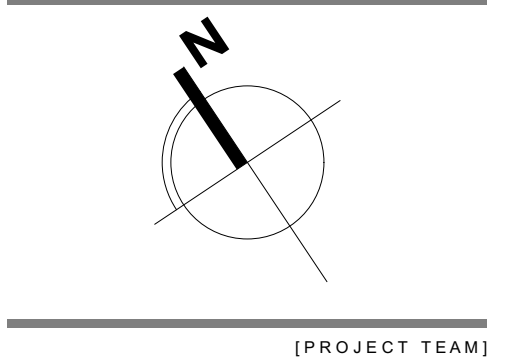
A-9.020



Integra
ARCHITECTURE INC.

2330-200 Granville Street
Vancouver, BC, V6C 1S4
www.integra-arch.com
Telephone: 604 688 4220

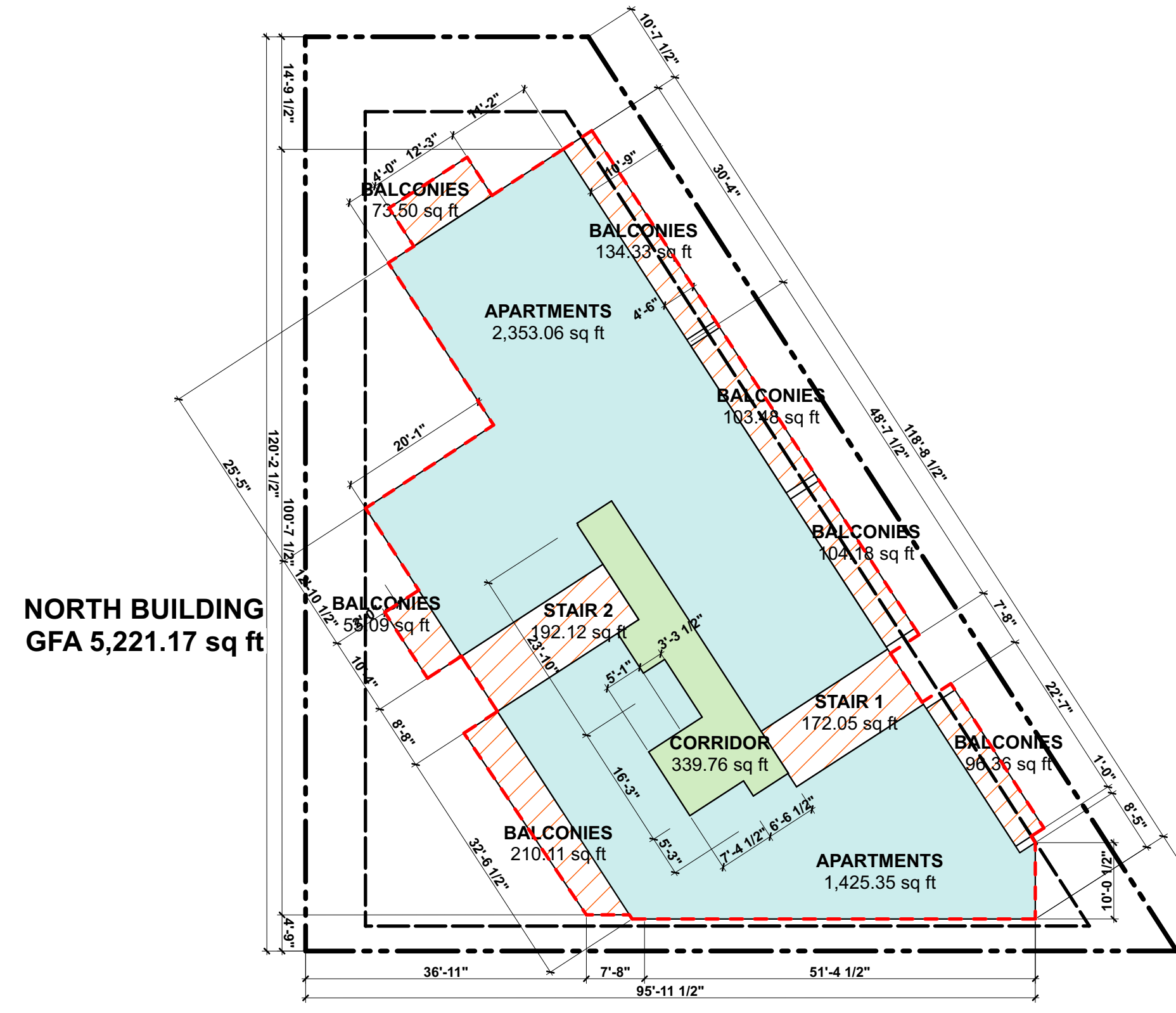
COPYRIGHT RESERVED. THIS DRAWING AND DESIGN IS AND IT ALL TIMES REMAINS THE EXCLUSIVE PROPERTY OF INTEGRARCHITECTURE INC. AND CANNOT BE USED WITHOUT THE ARCHITECT'S CONSENT.



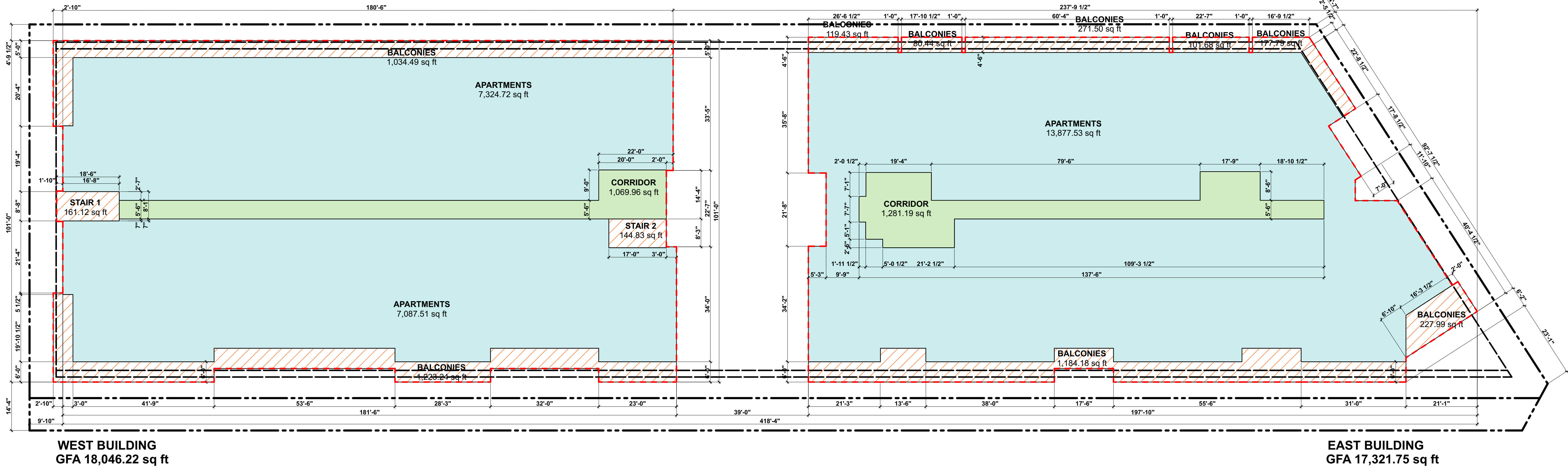
EAST				
LEVEL	BLDG	Zone Category	Name	AREA
Level 1	EAST	Circulation	CORRIDOR	1,829.53
	EAST	Commercial	COMMERCIAL	3,258.50
	EAST	Commercial	COMMERCIAL	7,840.08
	EAST	Commercial	DAYCARE	1,569.20
Level 2	EAST	Circulation	CORRIDOR	1,130.33
	EAST	Residential	APARTMENTS	14,222.08
Level 3	EAST	Circulation	CORRIDOR	1,281.19
	EAST	Residential	APARTMENTS	13,877.53
Level 4	EAST	Circulation	CORRIDOR	1,234.63
	EAST	Residential	APARTMENTS	13,568.90
Level 5	EAST	Circulation	CORRIDOR	1,174.20
	EAST	Residential	APARTMENTS	11,973.33
				72,959.50 sq ft

NORTH				
LEVEL	BLDG	Zone Category	Name	AREA
Level 1	NORTH	Circulation	CORRIDOR	196.45
	NORTH	Commercial	COMMERCIAL	2,158.14
	NORTH	Residential	APARTMENTS	1,040.29
	NORTH	Residential	TOWNHOUSES	1,831.46
Level 2	NORTH	Circulation	CORRIDOR	365.52
	NORTH	Residential	APARTMENTS	1,216.76
	NORTH	Residential	APARTMENTS	1,897.19
	NORTH	Residential	TOWNHOUSES	1,821.08
Level 3	NORTH	Circulation	CORRIDOR	339.76
	NORTH	Residential	APARTMENTS	1,425.35
	NORTH	Residential	APARTMENTS	2,353.06
				14,645.06 sq ft

WEST				
LEVEL	BLDG	Zone Category	Name	AREA
Ground Floor	WEST	Circulation	CORRIDOR	116.33
	WEST	Circulation	CORRIDOR	1,040.74
Level 1	WEST	Circulation	CORRIDOR	1,068.31
	WEST	Residential	APARTMENTS	2,834.82
	WEST	Residential	LIVE/WORK	7,428.49
	WEST	Residential	TOWNHOUSES	3,788.27
Level 2	WEST	Circulation	CORRIDOR	1,070.08
	WEST	Residential	APARTMENTS	7,321.52
	WEST	Residential	APARTMENTS	7,324.77
Level 3	WEST	Circulation	CORRIDOR	1,069.96
	WEST	Residential	APARTMENTS	7,087.51
	WEST	Residential	APARTMENTS	7,324.72
Level 4	WEST	Circulation	CORRIDOR	1,072.82
	WEST	Residential	APARTMENTS	6,173.31
	WEST	Residential	APARTMENTS	6,214.49
Level 5	WEST	Circulation	CORRIDOR	308.30
				61,244.44 sq ft



GFA		
LEVEL	BLDG	AREA
Ground Floor	WEST	33,763.25
	EAST	15,360.44
Level 1	NORTH	6,005.03
	WEST	17,139.29
	EAST	17,387.00
Level 2	NORTH	6,628.14
	WEST	18,284.51
	EAST	17,321.75
Level 3	NORTH	5,221.17
	WEST	18,046.22
	EAST	16,982.60
Level 4	WEST	15,991.47
	EAST	15,766.52
Level 5	WEST	164.25
	WEST	486.87
		204,548.51 sq ft



Level 3 Overlay
SCALE: 1/16" = 1'-0"

[ARCHITECT SEAL]

[CLIENT]

Cascadia Green
Development

[PROJECT]

402-438 E 3rd St &
341-343 St Davids Ave

North Vancouver, BC

[TITLE]

**LEVEL 3 AREA
OVERLAY**

471 [PROJECT]

1/16" = 1'-0" [SCALE]

2020-12-21 [DATE]

City Review [ISSUE]

[DRAWING]

A-9.030

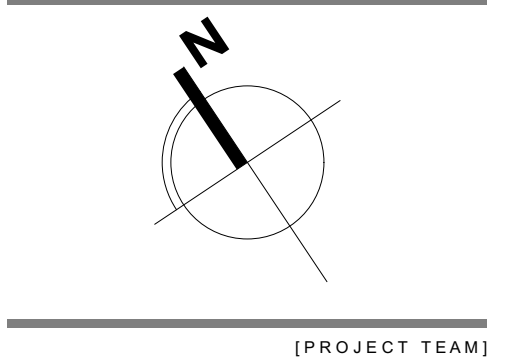


Integra

ARCHITECTURE INC.

2330-200 Granville Street
Vancouver, BC, V6C 1S4
www.integra-arch.com
Telephone: 604 688 4220

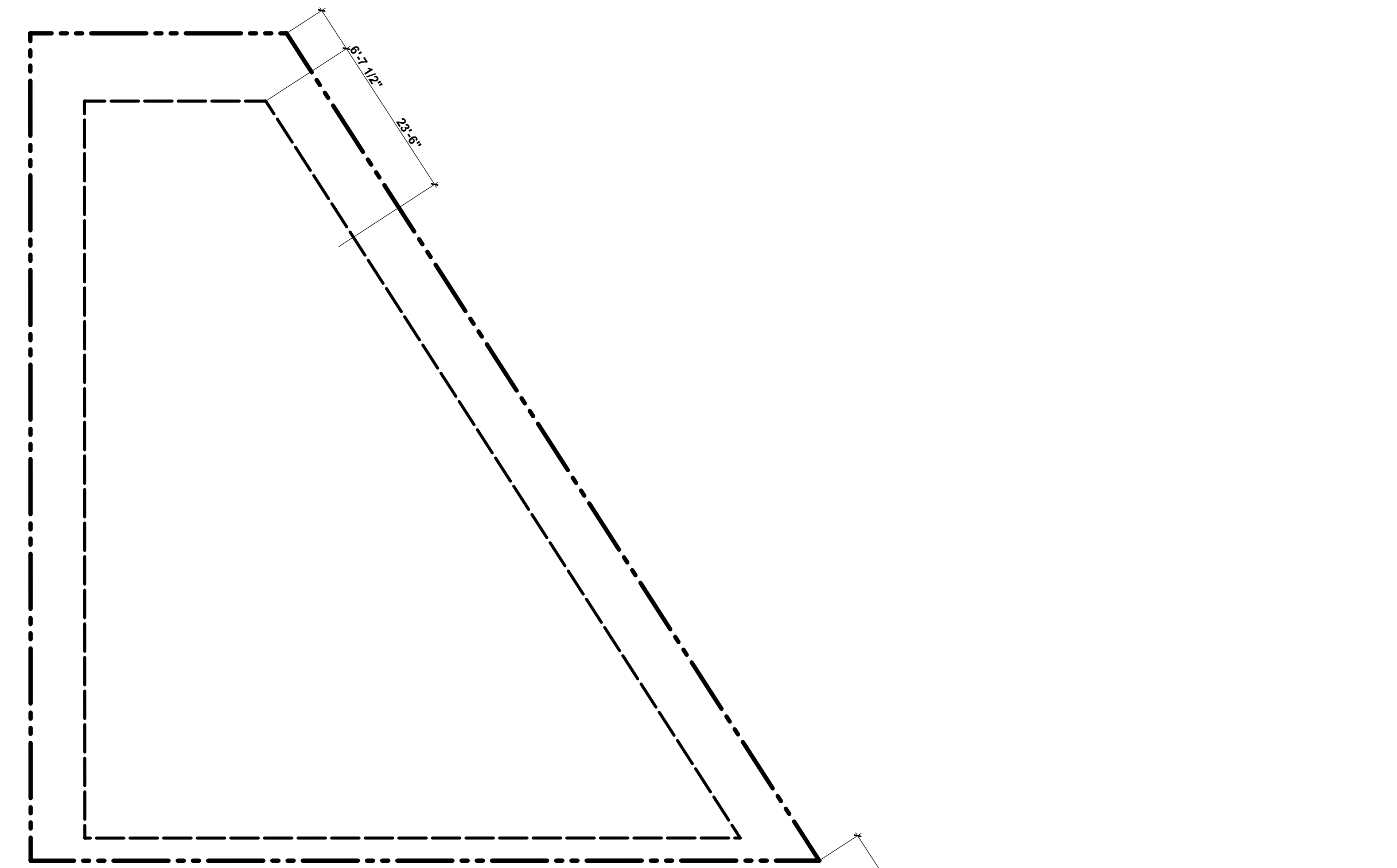
COPYRIGHT RESERVED. THIS DRAWING AND DESIGN IS AND IT ALL TIMES REMAINS THE EXCLUSIVE PROPERTY OF INTEGRARCHITECTURE INC. AND CANNOT BE USED WITHOUT THE ARCHITECT'S CONSENT.



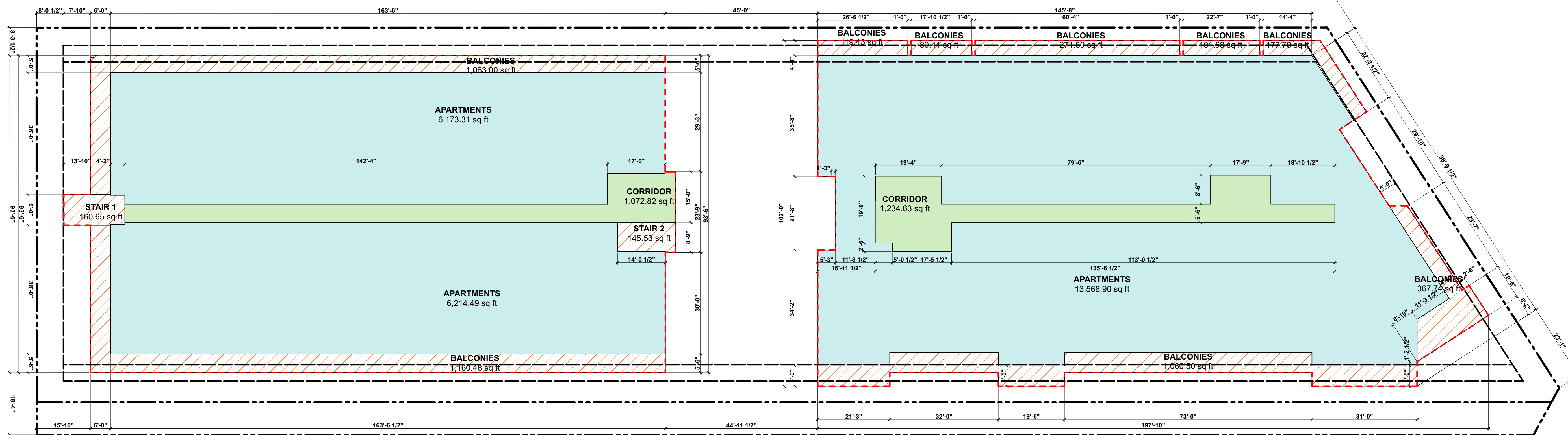
EAST				
LEVEL	BLDG	Zone Category	Name	AREA
Level 1	EAST	Circulation	CORRIDOR	1,829.53
	EAST	Commercial	COMMERCIAL	3,258.50
	EAST	Commercial	COMMERCIAL	7,840.08
	EAST	Commercial	DAYCARE	1,569.20
Level 2	EAST	Circulation	CORRIDOR	1,130.33
	EAST	Residential	APARTMENTS	14,222.08
Level 3	EAST	Circulation	CORRIDOR	1,281.19
	EAST	Residential	APARTMENTS	13,877.53
Level 4	EAST	Circulation	CORRIDOR	1,234.63
	EAST	Residential	APARTMENTS	13,568.90
Level 5	EAST	Circulation	CORRIDOR	1,174.20
	EAST	Residential	APARTMENTS	11,973.33
				72,959.50 sq ft

NORTH				
LEVEL	BLDG	Zone Category	Name	AREA
Level 1	NORTH	Circulation	CORRIDOR	196.45
	NORTH	Commercial	COMMERCIAL	2,158.14
	NORTH	Residential	APARTMENTS	1,040.29
	NORTH	Residential	TOWNHOUSES	1,831.46
Level 2	NORTH	Circulation	CORRIDOR	365.52
	NORTH	Residential	APARTMENTS	1,216.76
	NORTH	Residential	APARTMENTS	1,897.19
	NORTH	Residential	TOWNHOUSES	1,821.08
Level 3	NORTH	Circulation	CORRIDOR	339.76
	NORTH	Residential	APARTMENTS	1,425.35
	NORTH	Residential	APARTMENTS	2,353.06
				14,645.06 sq ft

WEST				
LEVEL	BLDG	Zone Category	Name	AREA
Ground Floor	WEST	Circulation	CORRIDOR	116.33
	WEST	Circulation	CORRIDOR	1,040.74
Level 1	WEST	Circulation	CORRIDOR	1,068.31
	WEST	Residential	APARTMENTS	2,834.82
	WEST	Residential	LIVE/WORK	7,428.49
	WEST	Residential	TOWNHOUSES	3,788.27
Level 2	WEST	Circulation	CORRIDOR	1,070.08
	WEST	Residential	APARTMENTS	7,321.52
	WEST	Residential	APARTMENTS	7,324.77
Level 3	WEST	Circulation	CORRIDOR	1,069.96
	WEST	Residential	APARTMENTS	7,087.51
	WEST	Residential	APARTMENTS	7,324.72
Level 4	WEST	Circulation	CORRIDOR	1,072.82
	WEST	Residential	APARTMENTS	6,173.31
	WEST	Residential	APARTMENTS	6,214.49
Level 5	WEST	Circulation	CORRIDOR	308.30
				61,244.44 sq ft



GFA		
LEVEL	BLDG	AREA
Ground Floor	WEST	33,763.25
	EAST	15,360.44
Level 1	NORTH	6,005.03
	WEST	17,139.29
Level 2	EAST	17,387.00
	NORTH	6,628.14
	WEST	18,284.51
Level 3	EAST	17,321.75
	NORTH	5,221.17
	WEST	18,046.22
Level 4	EAST	16,982.60
	WEST	15,991.47
Level 5	EAST	15,766.52
	WEST	164.25
	WEST	486.87
		204,548.51 sq ft



WEST BUILDING
GFA 15,991.47 sq ft

EAST BUILDING
GFA 16,982.60 sq ft

Level 4 Overlay

SCALE: 1/16" = 1'-0"

[ARCHITECT SEAL]

[CLIENT]

Cascadia Green
Development

[PROJECT]

402-438 E 3rd St &
341-343 St Davids Ave

North Vancouver, BC

[TITLE]

LEVEL 4 AREA OVERLAY

471 [PROJECT]

1/16" = 1'-0" [SCALE]

2020-12-21 [DATE]

City Review [ISSUE]

[DRAWING]

A-9.040