

NOTES:

- LANDSCAPE DRAWINGS, ARCHITECTURAL AND CIVIL DRAWINGS SHALL BE COORDINATED.
- GROWING MEDIUM IN ACCORDANCE WITH THE CURRENT EDITION OF THE BRITISH COLUMBIA LANDSCAPE STANDARD SHALL BE PROVIDED TO THE FOLLOWING MINIMUM DEPTH/DIMENSIONS:
 - LAWN AREAS - 150 MM (6")
 - SHRUBS, GROUNDCOVERS, VINES & PERENNIALS - 450 MM (18")
 - TREES - MINIMUM 300 MM (12") OF TOPSOIL AROUND THE ROOTBALL COMPACTED TO 85% STD. ENSURE ANY FILL WITHIN THE PROTECTED ROOT ZONE OF EXISTING TREES DOES NOT EXCEED 6" (15CM)
- DEPTH OF SANDY LOAM.
- 3-TREE PROTECTION FENCING FOR EXISTING TREES TO BE RETAINED SHALL BE INSTALLED PRIOR TO CONSTRUCTION AND MAINTAINED UNTIL PROJECT COMPLETION.
- ALL TREES/SHRUB SPECIES SHOULD BE OF GUARANTEED NURSERY STOCK.
- THE BOTANICAL NAME SHOULD BE USED WHEN ORDERING STOCK TO ENSURE THAT THE DESIRED SPECIES IS BEING PURCHASED. EACH SPECIMEN SHOULD BE TAGGED WITH THE BOTANICAL NAME AND THE TAG SHOULD BE LEFT ATTACHED AFTER PLANTING.
- 3-TREE STOCK SHOULD BE A MINIMUM OF 1.2 METERS (4 FEET) IN HEIGHT WHEN PURCHASED AND PLANTED 1.5 TO 2 METERS GREATEST LIKELIHOOD OF SURVIVING. REGULAR WATERING MAY BE REQUIRED UNTIL THE PLANTS ARE ESTABLISHED.
- PROPER PLANTING PROCEDURES SHOULD BE OBTAINED FROM THE NURSERY SUPPLYING THE STOCK.
- PLANTING ON A GIVEN AREA BEING ENHANCED MUST BE SUCCESSFUL TO AN 80% TAKE. IF MORE THAN 20% DIE OVER ONE YEAR, REPLANTING IS NECESSARY.
- ARBORIST REPORT FOR TREE REMOVAL AND LOCATION SUPERSEDES LANDSCAPE PLAN.

TREE PLANTING

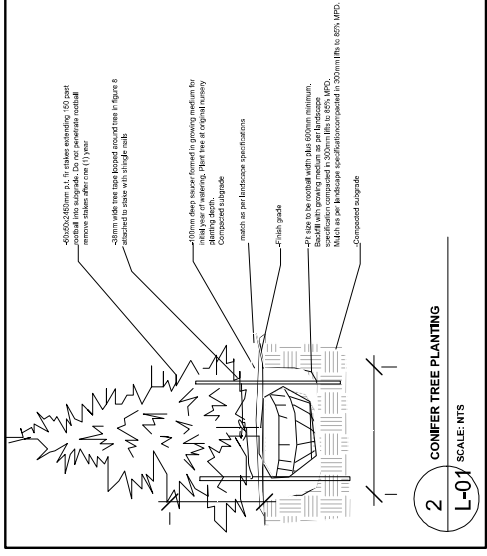
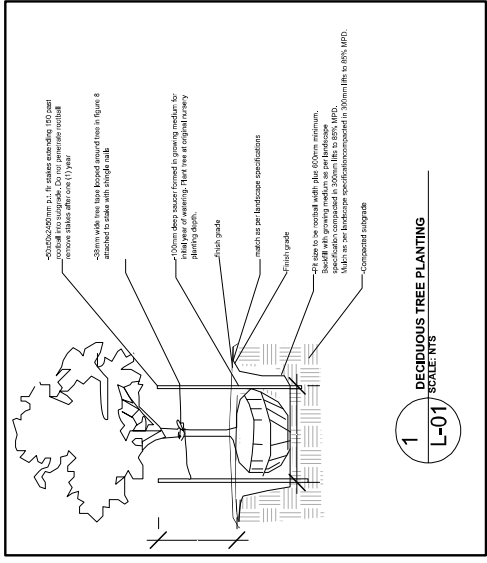
- 50X24X450MM P.T. FIR STAKES EXTENDING 150 PAST ROOTBALL INTO THE SUBGRADE. DO NOT PENETRATE ROOTBALL.
- REMOVE STAKES AFTER ONE (1) YEAR
- BACKFILL WITH THE GROWING MEDIUM AS PER LANDSCAPE SPECIFICATIONS COMPACTED IN 300MM LIFTS TO 85% MDP.
- 100MM DEEP SAUCER FORMED IN GROWING MEDIUM FOR THE ORIGINAL YEAR OF WATERING. PLANT TREE AT ORIGINAL NURSERY PLANTING DEPTH

SHRUB PLANTING

- GROWING MEDIUM AS PER LANDSCAPE SPECIFICATION. 150MM MIN. DEPTH OF TOPSOIL BELOW PLANT MULCH AS PER LANDSCAPE SPECIFICATION.
- FIRMLY COMPACTED SAUCER TO CREATE MIN. 50MM HIGH LIP AROUND THE SHRUB.
- EXISTING SUBGRADE COMPACTED TO 85% MDP
- FINISH GRADE
- MULCH AS PER LANDSCAPE SPECIFICATION.
- P.T. SIZE TO BE ROOTBALL WIDTH PLUS 600MM MINIMUM.

TREE REMOVAL

- REMOVAL AND/OR PRUNING OF EXISTING TREES AS IDENTIFIED ON THE LANDSCAPE PLAN SHALL BE UNDERTAKEN ONLY BY A QUALIFIED ARBORIST. WORK SHALL COMPLY WITH ALL RELEVANT CITY, OF NORTH VANCOUVER TREE BY LAWS.
- FOR TREE REMOVAL & REPLACEMENT, THE ARBORISTS REPORT SUPERSEDES LANDSCAPE DOCUMENTS.

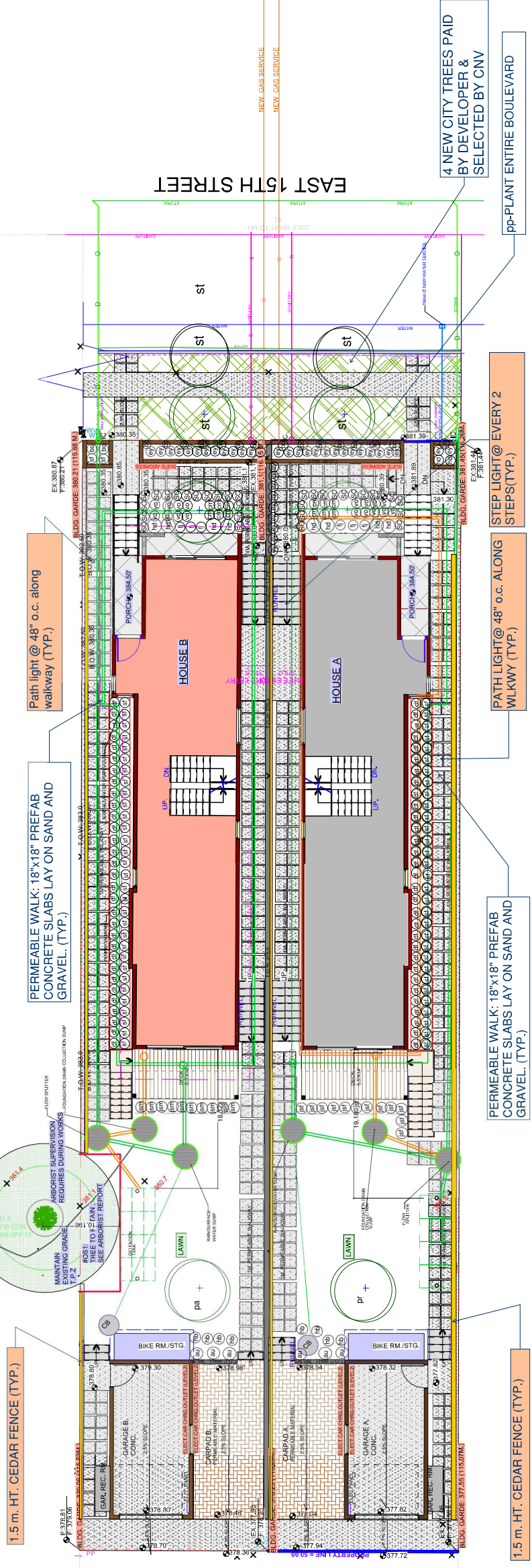


LIGHTING LEGEND

SYMBOL	TYPE
■	WALL LIGHT (INSET IN CONCRETE)
▲	PATH LIGHT
●	WALL-MOUNTED MOTION SENSOR LIGHT

ARBORIST SUPERVISION IS REQUIRED DURING ANY DEMOLITION & CONSTRUCTION WORK

Type	Code	Common Name	Scientific Name	Size	Qty	Origin
Tree	ct	Selected by CNV		cnv	4	
Deciduous	pr	Plum - Mirabelles (red)	<i>Prunus serotifera</i>	5 cm. cal	1	non-native
Deciduous	pa	Plum - Gold	<i>Prunus americana</i>	5 cm. cal	1	non-native
SHRUBS						
Shrub	sc	Sweet box dwarf	<i>Sarcococa</i>	#2 pot	32	non-native
Shrub	lv	Heart leaf Bergenia	<i>Bergenia cordifolia</i>	#2 pot	17	non-native
Shrub	jsm	Japanese skimmia-male	<i>Skimmia japonica</i>	#2 pot	10	non-native
Shrub	jsf	Japanese skimmia-female	<i>Skimmia japonica</i>	#2 pot	12	non-native
Shrub	ey	English yew	<i>Taxus baccata</i>	#3 pot	18	non-native
Shrub	fj	Japonica Aralia	<i>Fatsia japonica</i>	#3 pot	6	non-native
Shrub	hd	Hortensia	<i>Hydrangea macrophylla</i>	#3 pot	8	non-native
Shrub	au	Strawberry Tree	<i>Arbutus unedo</i>	#3 pot	6	non-native
Shrub	hb	Heavenly bamboo	<i>Nandina domestica</i>	#2 pot	8	non-native
GROUND COVERS						
Ground cover	cm	Creeping Mahonia	<i>Mahonia repens</i>	#1 pot	12	native
Ground cover	vo	Evergreen huckleberry	<i>Vaccinium ovatum</i>	#2 pot	16	non-native
Ground cover	df	Deer fern	<i>Blechnum spicant</i>	#1 pot	50	native
Ground cover	sf	Sword fern	<i>Polystichum munitum</i>	#1 pot	50	native
Ground cover	pp	pollinator plants	variety of plants	seeds		native
Ground cover	sa	Salal	<i>Gaultheria shallon</i>	#1 pot	0	native



CONSULTANTS:

COPYRIGHT: DRAWINGS ARE THE EXCLUSIVE PROPERTY OF VERNACULAR STUDIO INC. AND MAY NOT BE REPRODUCED, COPIED, OR REVISED WITHOUT PRIOR WRITTEN CONSENT.



LEGEND:

- FINISH ELEV.
- POWER VENT
- ⊕ FLOOR DRAIN
- ⊗ SMOKE ALARM

REVISION:

No.	SUBVIV./REV.	DATE
1	ISSUE FOR	DEC. 20, 2024

PROJECT: PREAPP

429 EAST 15TH NORTH VANCOUVER

LANDSCAPE PLAN

DRAWING NO.: L-01

DATE:

DRAWN BY:

CHECKED BY:

SCALE: 1/16"