

CONSULTANTS:

COPYRIGHT:
THIS PLAN AND DESIGN ARE AND AT ALL TIMES THE EXCLUSIVE PROPERTY OF VERNACULAR DESIGN INC. AND MAY NOT BE REUSED, REPRODUCED, AND REVISED WITHOUT PRIOR WRITTEN CONSENT.

GENERAL NOTES:
THIS DRAWING MUST NOT BE SCALED. THE GENERAL CONTRACTOR SHALL VERIFY ALL DIMENSIONS AND LEVELS PRIOR TO COMMENCEMENT OF WORK. ALL ERRORS AND OMISSIONS SHALL BE REPORTED IMMEDIATELY TO VERNACULAR DESIGN INC.



LEGEND:

- FINISH ELEV.
- POWER VENT
- ⊕ FLOOR DRAIN
- ⊗ SMOKE ALARM

REVISION:

6	B.P.	
5		
4		
3		
2		
1	SUBDIV/REZ	FEB 15, 2023
No.	Issue for	DATE

PROJECT: PREAPP

509 EAST 6TH ST.

DRAWING TITLE:

LANDSCAPE PLAN

DATE: JUNE 2019 **DRAWING NO.:**

DRAWN BY: G.A.

CHECKED BY: -M.R.
-R.CH

SCALE:

L-01

PLANTING LIST		509 EAST 6TH STREET		FEB/14/2-23		
Type	Code	Common Name	Scientific Name	Size	Qty	Origin
Tree/Hedge						
Deciduous	kd	Kousa Dogwood/white fl.	Cornus kousa	2.0 m ht.	2	non-native
Deciduous	fc	Fig tree	Ficus carica	5 cm. cal	2	non-native
SHRUBS						
Shrub	sc	Sweet box	Sarcococa	#2 pot	40	non-native
Shrub	mo	Mexican Orange	Choisya ternata	#2 pot	14	non-native
Shrub	st	Strawberry tree	Arbutus unedo	#3 pot	4	native
Shrub	vb	Viburnum	Viburnum davidii	#2 pot	8	non-native
Shrub	og	Oregon grape	Mahonia	#2 pot	8	native
Shrub	el	English Lavander	Lavandula angustifolia	#2 pot	42	non-native
Shrub	jsm	Japanese skimmia-male	Skimmia japonica	#2 pot	10	non-native
Shrub	jsf	Japanese skimmia-female	Skimmia japonica	#2 pot	10	non-native
Shrub	cl	Dwarf cherry laurel	Otto luyken	#2 pot	10	non-native
Shrub	ey	English yew	Taxus baccata	#3 pot	60	non-native
Shrub	hb	Heavenly bamboo	Nandina domestica	#2 pot	30	non-native
GROUND COVERS						
Ground cover	cm	Creeping Mahonia	Mahonia repens	#1 pot	0	native
Ground cover	fg	Feather red grass	Calamagrostis	#2 pot	0	non-native
Ground cover	df	Deer fern	Blechnum spicant	#1 pot	30	native
Ground cover	sf	Sword fern	Polystichum munitum	#1 pot	30	native
Ground cover	sa	Salal	Gaultheria shallon	#1 pot	60	native

PAVEMENTS:

- Broom finish conc. paving w/scorelines
- "Aquapave" permeable conc. pavers with soldier course edge by Abbotsford Conc.
- Standard ("Natural" colour)
- 75mm (3") depth of compacted granite screenings over 100mm compacted granular base.

DECIDUOUS TREE PLANTING:

- 50x50x2450mm p.t. fir stakes extending 150 past rootball into subgrade. Do not penetrate rootball remove stakes after one (1) year
- 38mm wide tree tape looped around tree in figure 8 attached to stake with shingle nails
- 50x50x2450mm p.t. fir stakes extending 150 past rootball into subgrade. Do not penetrate rootball remove stakes after one (1) year
- Compacted subgrad
- Finish grade
- Mulch as per landscape specification
- Pit size to be rootball width plus 600mm minimum
- Backfill with growing medium as per landscape specification compacted in 300mm lifts to 85% MPD. 100mm deep saucer formed in growing medium for initial year of watering. Plant tree at original nursery planting depth

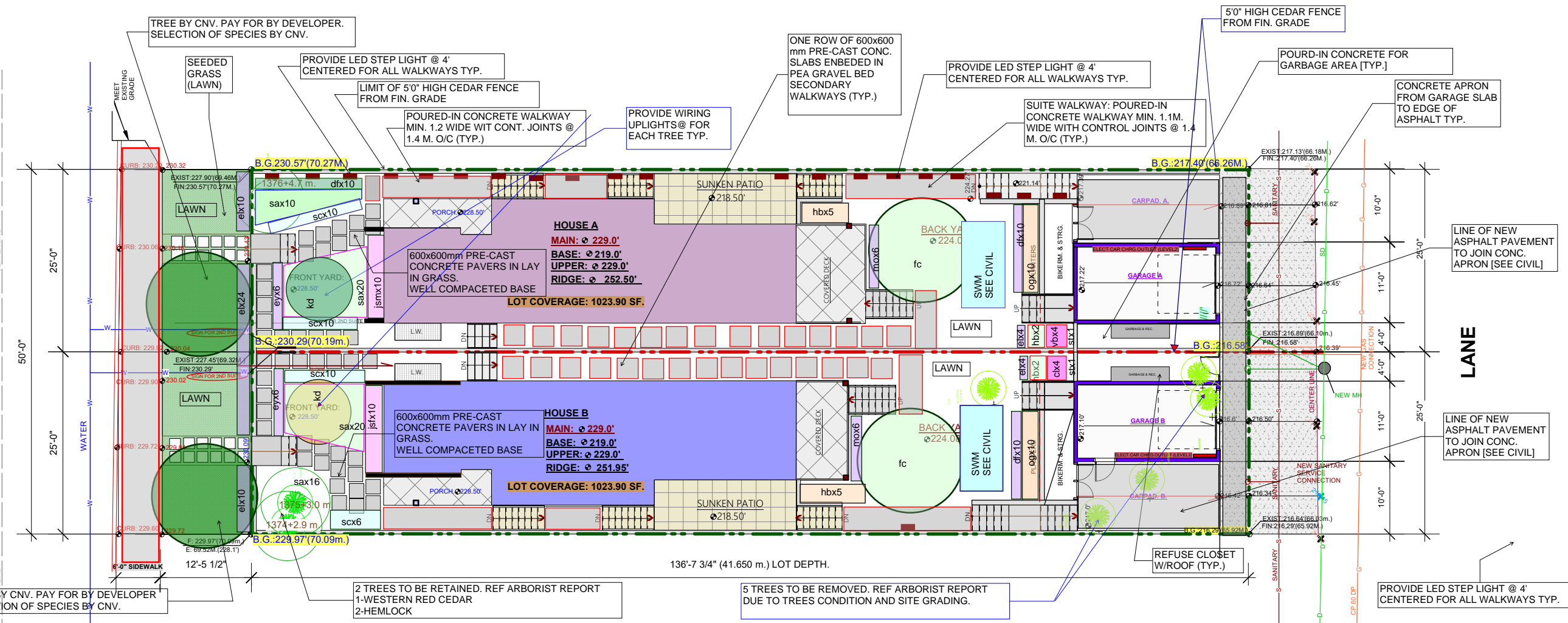
GENERAL NOTES

- Any areas of compacted soil (through construction or removal of old sidewalk or roadway, etc.) to be replaced with 600mm depth of turf-blend soil and sod over 150mm of scarified subgrade
- 300mm depth of continuous root barrier to be installed at front edge of proposed sidewalks and on both sides of entry walks
- All concrete flatwork to receive "California Style" tooled control joints with light broom finish
- All sod to be Chaffer-resistant (contain over 70% Tall Turf-type Fescue)

GENERAL NOTES

- PROVIDE WIRING FOR GARDEN SPRINKLER, LOW VOLTAGE AND HIGH VOLTAGE ALL ON SEPARATE BREAKER.
- All sod to be Chaffer-resistant (contain over 70% Tall Turf-type Fescue)

EAST 6TH ST.



TREE BY CNV. PAY FOR BY DEVELOPER. SELECTION OF SPECIES BY CNV.

2 TREES TO BE RETAINED. REF ARBORIST REPORT
1-WESTERN RED CEDAR
2-HEMLOCK

5 TREES TO BE REMOVED. REF ARBORIST REPORT
DUE TO TREES CONDITION AND SITE GRADING.

PROVIDE LED STEP LIGHT @ 4' CENTERED FOR ALL WALKWAYS TYP.