

# LANDSCAPE CONTRACT DOCUMENTS

## PROJECT: LANDSCAPE FOR SUBDIVISION

### DEVELOPMENT

**LOCATION:** 822 4TH STREET EAST, NORTH VANCOUVER  
**CLIENT:** 1388368 BC LTD.  
**ARCHITECT/ DESIGNER:** INSPIRED ARCHITECTURE  
**LANDSCAPE ARCHITECT CONSULTANT:** SW LANDSCAPE ARCHITECT  
**ATTN:** STEVE WONG 778 834-8959 stevewong234@gmail.com  
www.swlandscapearchitect.com

### SUMMARY OF LANDSCAPE SCOPE OF WORK

**SUMMARY:** THE LANDSCAPE PORTION OF THE PROJECT INCLUDES ALL LANDSCAPE WORKS ASSOCIATED WITH A NEW RESIDENTIAL DEVELOPMENT PROJECT. THIS INCLUDES BUT NOT LIMITED TO, SITE DEMOLITION, SITE PREPARATION, GRADING AND DRAINAGE, SUPPLY AND INSTALLATION OF GROWING MEDIUM, LANDSCAPE PLANTS, MULCH, IRRIGATION SYSTEM, LANDSCAPE PAVERS, CIP CONCRETE WALK/WALLS/STAIRS, CIP ADDRESS PILLAR WITH LIT SIGN, FENCING, GATES, LOW VOLTAGE LIGHTING, ONE YEAR WARRANTY AND ONE YEAR LANDSCAPE MAINTENANCE. CONTRACTOR IS RESPONSIBLE FOR PROVIDING ELECTRICAL AND WATER FEED TO ALLOW FOR THE INSTALLATION OF A COMPLETE, FUNCTIONING LANDSCAPE LIGHTING AND IRRIGATION SYSTEM. LANDSCAPE DESIGN/WORKS IS TO BE COORDINATED WITH THE ARCHITECT AND OTHER CONSULTANTS.

### LANDSCAPE LIST OF DRAWINGS

- L0 COVER SHEET
- L1 LAYOUT
- L2 PLANTING PLAN
- L3 LIGHTING PLAN
- L4 TREE MANAGEMENT PLAN
- L5 DETAILS

### GENERAL CONDITIONS OF THE CONTRACT

-REFER TO GENERAL CONDITIONS OF CONTRACT, BY PRIME CONSULTANT  
-REFER TO, AND COORDINATE THESE CONTRACT DOCUMENTS WITH THE CONTRACT DOCUMENTS OF THE OTHER CONSULTANTS AND THE MAIN CONTRACT

### LANDSCAPE SPECIFICATIONS

1. **CANADIAN LANDSCAPE STANDARD (CLS), SECOND EDITION**  
COPYRIGHT, 2020, ISBN: 978-0-9950714-1-4  
-PUBLISHED JOINTLY BY:  
CANADIAN SOCIETY OF LANDSCAPE ARCHITECTS  
12 FORILLON CRESCENT, OTTAWA ON K2M 2W5  
1-613-668-4775 cs-la-aapc.ca  
CANADIAN NURSERY LANDSCAPE ASSOCIATION  
7856 FIFTH LINE SOUTH MILTON ON L9T 2X8  
1-888-446-3499 cnla-acpp.ca

### SUPPLEMENTARY SPECIFICATIONS- PROJECT SPECIFIC:

9. **LANDSCAPE MAINTENANCE:** ADD: PER SECTION 9.1.5, ESTABLISHMENT AND WARRANTY MAINTENANCE, THE MAINTENANCE PERIOD WILL BE FOR 1 CALENDAR YEAR FROM DATE OF ACCEPTANCE, PER SECTION 9.1.7, MAINTENANCE LEVEL FOR THIS PROJECT WILL BE AT LEVEL 3 "MODERATE"

### CLS SPECIFICATIONS

1. SCOPE OF THE STANDARD
2. CONTRACT ADMINISTRATION
3. SITE PREPARATION AND PROTECTION
4. GRADING AND DRAINAGE
5. GROWING MEDIUM
6. PLANTS AND PLANTING
7. MULCHING
8. SEEDING AND SODDING
9. LANDSCAPE MAINTENANCE
10. IRRIGATION SYSTEMS
11. INTEGRATED PEST AND VEGETATION MANAGEMENT
12. HARDSCAPE
13. LANDSCAPE OVER STRUCTURES
14. INTERIOR PLANTSCAPE N/A

- APPENDIX A: LIST OF TABLES AND FIGURES**  
**APPENDIX B: BASIC CONTENTS OF A LANDSCAPE COMMISSIONING PLAN**  
**APPENDIX C: CANADIAN NURSERY STOCK STANDARD, NINTH EDITION**  
**APPENDIX D: NATIONAL VOLUNTARY CODE OF CONDUCT FOR THE ORNAMENTAL HORTICULTURE INDUSTRY**  
**GLOSSARY OF TERMS AND DEFINITIONS**

2. **MMCD (LATEST EDITION) SPECIFICATIONS AND DRAWINGS, WITH MUNICIPAL SUPPLEMENTARY SPECIFICATIONS AND ALL APPLICABLE MUNICIPAL BY-LAWS.**

3. **FOR ALL CHILDREN'S PLAY SPACES AND EQUIPMENT, THE FOLLOWING STANDARDS ARE APPLICABLE: CAN/CSA-Z614-14 AND IPEMA (INTERNATIONAL PLAY EQUIPMENT MANUFACTURERS ASSOCIATION) STANDARD. SPECIFICATIONS FOR PLAY SURFACES TO INCLUDE ASTM F1292/1951/2075/2223/F355**

### NOTES:

1. IN CASE OF CONFLICTING SPECIFICATIONS THE MOST STRINGENT SPECIFICATION PREVAILS
2. CONTRACTOR TO PROVIDE DIGITAL PHOTOS TO THE LANDSCAPE ARCHITECT FOR ALL WORK THAT WILL BE BURIED OR CONCEALED IN ORDER TO CONFIRM THAT THE WORK MEETS SPECIFICATIONS AND APPLICABLE STANDARDS
3. CONTRACTOR TO PROVIDE DIGITAL PHOTOS OF ALL TREES AT THE NURSERY FOR LANDSCAPE ARCHITECT APPROVAL PRIOR TO SHIPPING. PHOTOS ARE TO BE REPRESENTATIVE OF THE PLANTS TO BE SHIPPED AND CLEARLY SHOW THE QUALITY AND SIZE OF THE PLANTS. A MEASURING STICK MUST BE USED TO SHOW THE HEIGHT OF A PLANT AS WELL AS A TAPE MEASURE TO SHOW CALIPER SIZE.

### GENERAL PROJECT AND CONTRACTOR NOTES

1. Contractor shall review these plans thoroughly, make a detailed site visit, and shall immediately bring any inconsistency, site layout problem, or any other request for clarification to the Landscape Architect for resolution prior to the delivery of any bid. Failure to do so shall cause the Contractor to be ineligible for extras relating to such matters.
2. Contractor shall submit reproducible shop drawings to Landscape Architect for Owner's approval.
3. Contractor shall co-ordinate with all trades to provide complete working systems.
4. Drawings of existing facilities are, in general, diagrammatic. Exact locations shall be determined by the Contractor from field measurements taken by Contractor's personnel. Actual arrangement of the work shall follow locations shown on the drawings within the constraints of existing equipment and construction. Dimensions shall govern these drawings and they are not to be scaled. Any scales on drawings are only for the Contractor's convenience. Drawing and notes to drawings are correlative and have equal authority and priority. Should there be discrepancies in themselves or between them, Contractor shall base bid pricing on the most expensive combination of quality and/or quantity of the work indicated. In the event of discrepancies, the appropriate method of performing the work and/or items to be incorporated into the scope of the work shall be determined by the appropriate design professional (eg Landscape Architect, Architect, Engineer)
5. Contractor is responsible for the safety, actions and conduct of his employees and his subcontractors' employees while in the project area, adjacent areas and in the building and its vicinity.
6. All work described by these documents shall be performed in full accordance with all applicable codes and standards.
7. All materials, finishes, manufactured items, and equipment shall be installed in full accordance with the supplier's or manufacturer's written recommendations or these documents, whichever is more stringent.
8. Requests to substitute any product, technique, or material shall be submitted in writing to Landscape Architect for approval. Samples, product information, and drawings shall be required prior to substitution approval. Proposed substitution shall be of equal quality and performance specification to that originally specified.
9. All workmanship, material, and equipment shall be guaranteed for one year from date of Owner acceptance. Any failure or deterioration within this period shall be corrected by the contractor at the contractor's expense.
10. Coordinate landscape drawings with architect/engineer and all other consultant drawings.

### GENERAL LANDSCAPE NOTES

1. All landscape works are to meet the specifications and standards of the latest edition of the CANADIAN LANDSCAPE STANDARD, published by the Canadian Society of Landscape Architects and the Canadian Nursery landscape Association.
2. All landscape works to be carried out by a contractor with minimum 5 years' experience doing work similar in scope and size, and on at least 3 comparable projects. The contractor needs to be a member in good standing with the appropriate trade organization: eg, B.C. Landscape and Nursery Association (BCLNA), Irrigation industry Association of B.C. (IIABC). Execution of work to be under the direct supervision of qualified industry certified technicians.
3. All grades to meet adjacent grades at property line. All stormwater is to be contained on site and away from adjacent properties. All hard surfaces to be sloped a minimum of 1.5%, and all lawn areas to be sloped a minimum of 2% to avoid standing water. Contractor is ultimately responsible for ensuring there is no standing water on site over an extended period.
4. No slopes to be steeper than 2.5 horizontal: 1 vertical.
5. All plant material and growing medium to meet Canadian Landscape Standard #1 specifications. Plant search area is to be any plant nursery within the Lower Mainland. Plant substitutions are only allowed if approved by Landscape Architect. Suggested plant substitutions shall be of similar species and of at least equal size to those originally specified.
6. All shrub beds to contain minimum 18" (450) mm depth of approved growing medium over scarified subgrade. All lawn areas to contain minimum 6" (150) mm of approved growing medium over scarified subgrade.
7. All guardrails are required wherever the fall height is over 2 ft. Guardrails to be a minimum 42" high from any climbable surface surface. Maximum openings between pickets to be under 4".
8. Stairs to have consistent rise/run for risers and treads. Stair treads to slope 2% to front edge of tread for drainage and constructed with materials or finishes to prevent slip falls. All stairs over 2 risers to have handrails between 32" to 38" high from the front of stair treads, and to extend 12" past the end of top/bottom treads.
9. Exterior ramps to adhere to BC Building code if greater than 5% slope. Ramps to be maximum of 8.3% and minimum 5' width. Handrails required on both sides. Construction to adhere to BC Building code.
10. All retaining walls and structures over 4 ft. in height or if there are issues with soil stability require signoff from the appropriate engineer (eg structural, geotechnical). Contractor to provide engineer stamped shop drawings for Landscape Architect.
11. Landscape installation to be reviewed by registered Landscape Architect.

### GENERAL TREE NOTES

1. Any permitted tree removal(s) must be performed by a qualified professional.
2. No grade changes are to occur within the critical root zones of any retained trees. Any exposed roots from lines of excavation must be covered with burlap and then poly plastic in an effort to prevent dessication of exposed roots; this root curtain must be removed prior to backfilling. Trees must be adequately watered during the entire construction process.
3. The removal of existing organics within the critical root zones of retained trees must be performed manually, when installing new plant material within the critical root zones of retained trees, if large roots (1.5' diameter and larger) are encountered, then new plantings must be shifted to accommodate. No more than 3" of additional soil for new landscaping may be added within any critical root zone.
4. Any excavation work or work within the protection zone of retained trees requires the supervision of a certified arborist. This includes, but is not limited to: demolition, the installation of any permeable or impermeable surfaces (concrete, asphalt, pavers, etc.), installation of permanent or temporary services (gas, sewer, storm, sanitary, communication, electrical, irrigation, etc.), during the installation of patios, driveways, or any hardscape, during the installation of footings for fences, walls, decorative walls, retaining walls, decks, and deck footings.
5. Construction materials must not be stored within the tree protection zone (TPZ) of trees to be retained, and TPZ fencing to remain intact for the entire construction process. Signage must be clearly posted on each side of the barrier indicating "Tree protection zone-Do not enter of modify". Contact your project arborist for any TPZ barrier issues.
6. Refer to arborist report and drawing where applicable.

### MATERIALS LIST-COORDINATE WITH SPECIFICATIONS

1. ADDRESS PILLAR: Architectural concrete finish with tooled 3/8" radius edges, no trowel marks and smooth finish complete with rebar and footing. If sign is lit, then contractor to provide conduit for electrical feed.
2. ADDRESS SIGN: From Address Signage Company, North Vancouver. Address sign with integrated 12v LED lighting and standoffs. Contractor to mount to suitable support as confirmed by Landscape Architect. Specific design-3:Modern Stainless Steel Illuminated Sign in 18"x10".
3. CONCRETE FLATWORK: Per applicable industry standards. Concrete to be reinforced with rebar and/or WWM as shown on drawings. For concrete flatwork, provide medium broom finish with 2% cross slope, over min. 4" compacted granular base with expansion joints as required, and control joints @ 5'OC and where there is potential for cracking. Provide shop drawings for consultant review prior to placing showing expansion and control joints.
4. DRAIN: Area Drain by NDS (Part 640) with 6"x6"x4" square grate and adapter and to be ADA compliant/ heel-proof with 1/4" grate openings. Low profile adapter and polyolefin removeable grate with UV inhibitor and ss screws or equivalent
5. GRANULAR BASE: To be minimum 4" depth of 3/4" minus road base compacted to 95% MPD and free of impurities per MMCD specifications.
6. GROWING MEDIUM: In accordance with CLS standards, latest edition. For Turf Areas: Level 1H (High Traffic Lawn Areas), containing by weight: 70-90% sand, maximum 25% fines (max 20% clay), 3-5% organic matter, with pH between 6-7; For Planting Areas: Level 1P (Planting Areas), containing by weight: 50-70% sand, maximum 25% fines (max 20% clay), 10-20% organic matter, with pH between 4.5-6.5. Minimum 6" depth for lawn areas on grade, 18" min for planted areas on grade, over scarified base, or as otherwise specified. A current representative soil analysis is to be done by Pacific Soil Analysis, Richmond to confirm soil sample meets specifications prior to shipping. If after shipping the quality of the soil is in question, further sampling and testing by Pacific Soil Analysis will be required at contractor's expense. It is the contractor's responsibility to ensure all growing medium used meets specifications. If it is determined that the soil does not meet CLS Specifications, the soil is to be removed at contractor's expense. Contact information for Pacific Soil Analysis is: #5-11720 Voyageur Way, Richmond, BC V6X 3G9; Phone (604) 273-8226. For growing medium on roof or suspended slab, see section under Green Roof.
7. HANDRAILS FOR STAIRS: 36 " high measured from front edge of tread, powder coated medium gloss charcoal aluminum, installed to BC Building code. Exact style to be determined by Owner.
8. IRRIGATION: Supply and installation required for a complete automatic, inground irrigation system to provide supplemental water efficiently and uniformly. All components to be new, and includes all pipes, sleeves, valves, in-ground irrigation boxes, sprinkler heads, solenoid wires, controller and rain sensor. Hose bibs and quick couplers to be on their separate zone. Controller to have 2 extra zones for future expansion and if installed outside, to have controller and wiring secured in a lockable, weatherproof box. Irrigation components to be Rainbird, Toro or Hunter. Irrigation design and installation per Canadian Landscape Standards, latest edition. Design to be completed by a qualified designer/contractor with IIABC. Shop drawings for the irrigation design are to be provided by contractor and to be approved by the landscape architect prior to installation. Contractor is responsible for providing a water service line and connecting irrigation system to water service line complete with backflow preventor, pressure reducing valve and isolation valves. Contractor to adjust irrigation controller, sprinkler heads and commission system in addition to providing as-built drawings and a one year warranty.
9. LIGHTING-BY KICHLER: Lighting fixtures and accessories to be Kichler 12 V, LED, as required from the following: STEP LIGHT: KIC-5782BKT27 .86W/ PATH LIGHT: KIC-15805BKT27 4W/ ACCENT LIGHT:KIC-16155BKT27 3.5W/ HARDSCAPE: KIC-16103GRY27 2.7W/ WALL WASH: KIC-16070BKT27R 4.3W/ BOLLARD: KIC-16070BKT27R 3.8W/ DECK LIGHT: KIC-15764CBB .86W/ Transformer sized to allow for an additional 50 watt capacity; Photocell controller to be Kichler 15565BK or equivalent, with a 24 hour digital timer. Lighting to be installed as a complete working system with wires, connectors, mounting hardware, transformer, photocell and timer. Contractor is responsible for providing a power source and to have transformer and timer secured in a lockable and weatherproof cabinet if accessible to the public. All wires to be hidden and buried min 8" in soil. Refer to architectural drawings for specifications for exterior building lights.
10. LIGHTING-GENERAL: Contractor is responsible for providing a complete operating system with power source, wiring, photocell sensor and timer. If timer is outside, it will need to be secured in a lockable and weatherproof cabinet. All work to conform to applicable codes.
11. METALWORK: To be fabricated and installed per CSA and ASTM industry standard. All metal to have a smooth finish and be free of burrs, rough edges and defects. Ferrous metal to be galvanized and/or powdercoated to adequately protect against the elements.
12. MULCH: To be composted fir bark, having dark brown, fine texture and 1/2" minus, applied evenly at a 2" depth over plant beds. Available from Augustine Soil and Mulch (604 465-5193) or equivalent.
13. PAVERS-PERMEABLE: AQUAPAVE by Abbotsford Concrete Products, Standard Series, 4 5/16" by 8 3/4" by 3 1/8" inches, Natural colour, running bond with soldier course in Charcoal colour, installed per manufacturer's instructions.
14. PLANT MATERIAL: All plant material are to meet current Canadian Landscape Standard (CLS) #1 and installed according to current CLS standards by qualified contractor. Plant search is generally throughout the Lower Mainland except as indicated otherwise. Any plant substitutions must be approved by Landscape Architect.
15. RAILINGS: Height per drawings. Finish to be powder coated medium gloss black charcoal. Railings to be installed where there is a fall height of 2' or more, minimum 42: high and installed per BC Building code. Maximum gap between pickets to be 4". Posts to be min 2" d. and maximum 6' oc. Coordinate with architect/engineering drawings. Exact style to be determined by Owner. Contractor to supply shop drawings for approval by landscape architect.
16. RETAINING WALL-CONCRETE: Per applicable industry standards. Concrete to be reinforced with rebar as shown on drawings. Drawings are to be confirmed with structural engineer. For retaining walls over 4' high, or where there may be issues with global stability, stamped engineered drawings are required. Provide shop drawings for consultant review prior to placing showing expansion and control joints.
17. SOD: All sod to be sand based sod (Perennial rye/Kentucky bluegrass) with no netting. No clay or silt soil to be allowed with sod.
18. STEPS-CONCRETE: Medium broom finish, sloped 2% to front of tread per BC Building code. Coordinate with architect/engineering drawings.

**NOTE: ALL MATERIALS SHOWN ON DRAWINGS ARE NOT NECESSARILY INCLUDED IN THIS MATERIALS LIST. CONTRACTOR IS RESPONSIBLE FOR DETERMINING ALL MATERIALS REQUIRED TO COMPLETE LANDSCAPE WORKS PER CONTRACT DOCUMENTS.**



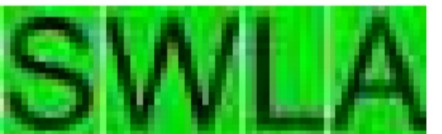
AERIAL VIEW OF PROJECT SITE- UP IS NORTH



STREET VIEW OF PROJECT SITE

No.	Date	Issue/Revision Notes
A	9/1/2023	REVIEW

COPYRIGHT RESERVED: This drawing and design are, and at all times shall remain the property of SW Landscape Architect, and cannot be used, reproduced or distributed without the written consent of SW Landscape Architect.



sw landscape architect

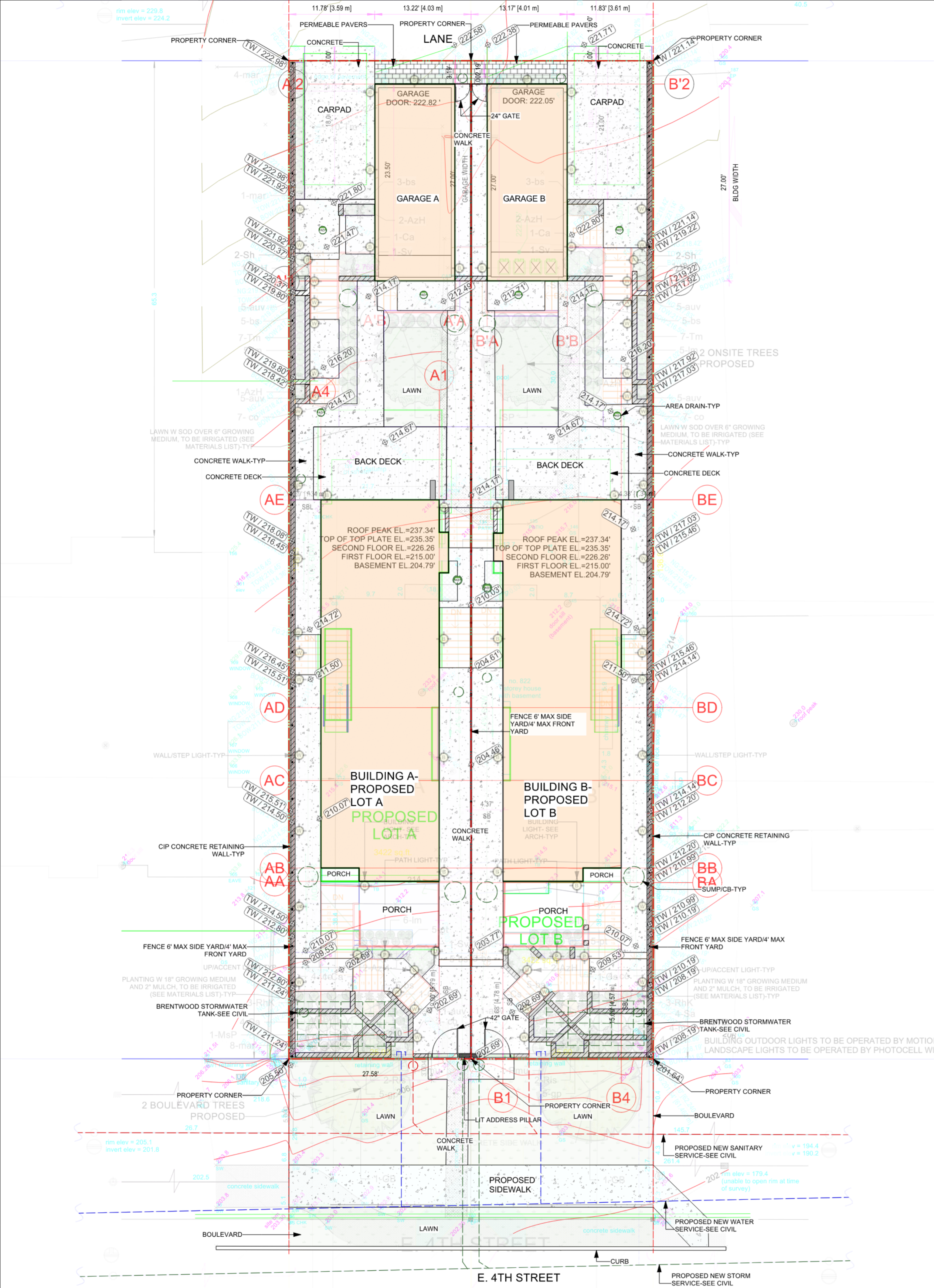
Design Firm	SW LANDSCAPE ARCHITECT
919 MELBOURNE AVENUE, NORTH VANCOUVER	stevewong234@gmail.com 778 834-8959
www.swlandscapearchitect.com	

Client	1388368 BC LTD
--------	----------------

Project Title	EAST 4TH AVE. SUBDIVISION 822 E. 4TH STREET NV
---------------	---

Sheet Title	COVER SHEET
-------------	-------------

Project Manager	STEVE WONG	Project ID	2023-21
Drawn By	SW	Scale	AS NOTED
Date	AUGUST 2023	Sheet No.	L-0
CAD File Name	822 E4 NV.vwx		of
			5



**GENERAL PROJECT AND CONTRACTOR NOTES**

- Contractor shall review these plans thoroughly, make a detailed site visit, and shall immediately bring any inconsistency, site layout problem, or any other request for clarification to the Landscape Architect for resolution prior to the delivery of any bid. Failure to do so shall cause the Contractor to be ineligible for extras relating to such matters.
- Contractor shall submit reproducible shop drawings to Landscape Architect for Owner's approval.
- Contractor shall co-ordinate with all trades to provide complete working systems.
- Drawings of existing facilities are, in general, diagrammatic. Exact locations shall be determined by the Contractor from field measurements taken by Contractor's personnel. Actual arrangement of the work shall follow locations shown on the drawings within the constraints of existing equipment and construction. Dimensions shall govern these drawings and they are not to be scaled. Any scales on drawings are only for the Contractor's convenience. Drawing and notes to drawings are correlative and have equal authority and priority. Should there be discrepancies in themselves or between them, Contractor shall base bid pricing on the most expensive combination of quality and/or quantity of the work indicated. In the event of discrepancies, the appropriate method of performing the work and/or items to be incorporated into the scope of the work shall be determined by the appropriate design professional (eg Landscape Architect, Architect, Engineer)
- Contractor is responsible for the safety, actions and conduct of his employees and his subcontractors' employees while in the project area, adjacent areas and in the building and its vicinity.
- All work described by these documents shall be performed in full accordance with all applicable codes and standards.
- All materials, finishes, manufactured items, and equipment shall be installed in full accordance with the supplier's or manufacturer's written recommendations or these documents, whichever is more stringent.
- Requests to substitute any product, technique, or material shall be submitted in writing to Landscape Architect for approval. Samples, product information, and drawings shall be required prior to substitution approval. Proposed substitution shall be of equal quality and performance specification to that originally specified.
- All workmanship, material, and equipment shall be guaranteed for one year from date of Owner acceptance. Any failure or deterioration within this period shall be corrected by the contractor at the contractor's expense.
- Coordinate landscape drawings with architect/engineer and all other consultant drawings.

No.	Date	Issue/Revision Notes
A	9/1/2023	REVIEW

COPYRIGHT RESERVED: This drawing and design are, and at all times shall remain the property of SW Landscape Architect, and cannot be used, reproduced or distributed without the written consent of SW Landscape Architect.



- LEGEND**
- 219.80 EXISTING ELEVATION
  - ⊕ (219.33) PROPOSED ELEVATION
  - ⊕ (TW / 222.25) PROPOSED TOP OF WALL ELEVATION
  - ⊕ (BW / 223.81) PROPOSED BOTTOM OF WALL ELEVATION
  - - - - - PROPERTY LINE
  - ⊕ AREA DRAIN
  - ===== TRENCH DRAIN

- ASPHALT
- CONCRETE
- FIBAR
- SAND
- STONEWORK
- SLABS/TILES
- WOOD DECK
- GRAVEL
- GRASS

Design Firm: **SW LANDSCAPE ARCHITECT**  
 919 MELBOURNE AVENUE, NORTH VANCOUVER  
 stevewong234@gmail.com 778 834-8959  
 www.swlandscapearchitect.com

Client: **1388368 BC LTD**

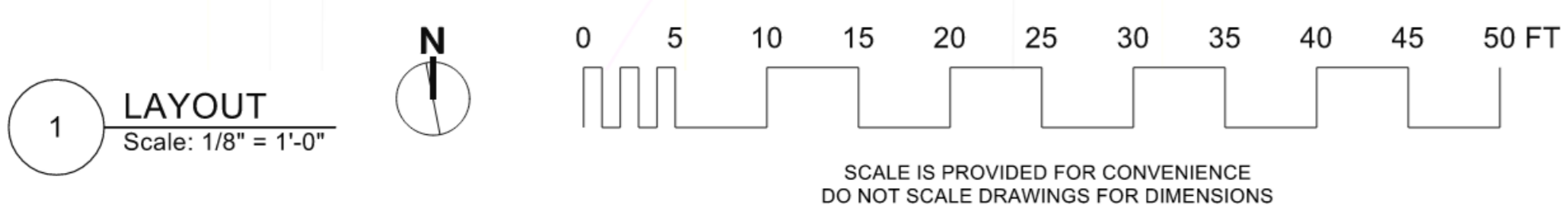
Project Title: **EAST 4TH AVE. SUBDIVISION  
 822 E. 4TH STREET NV**

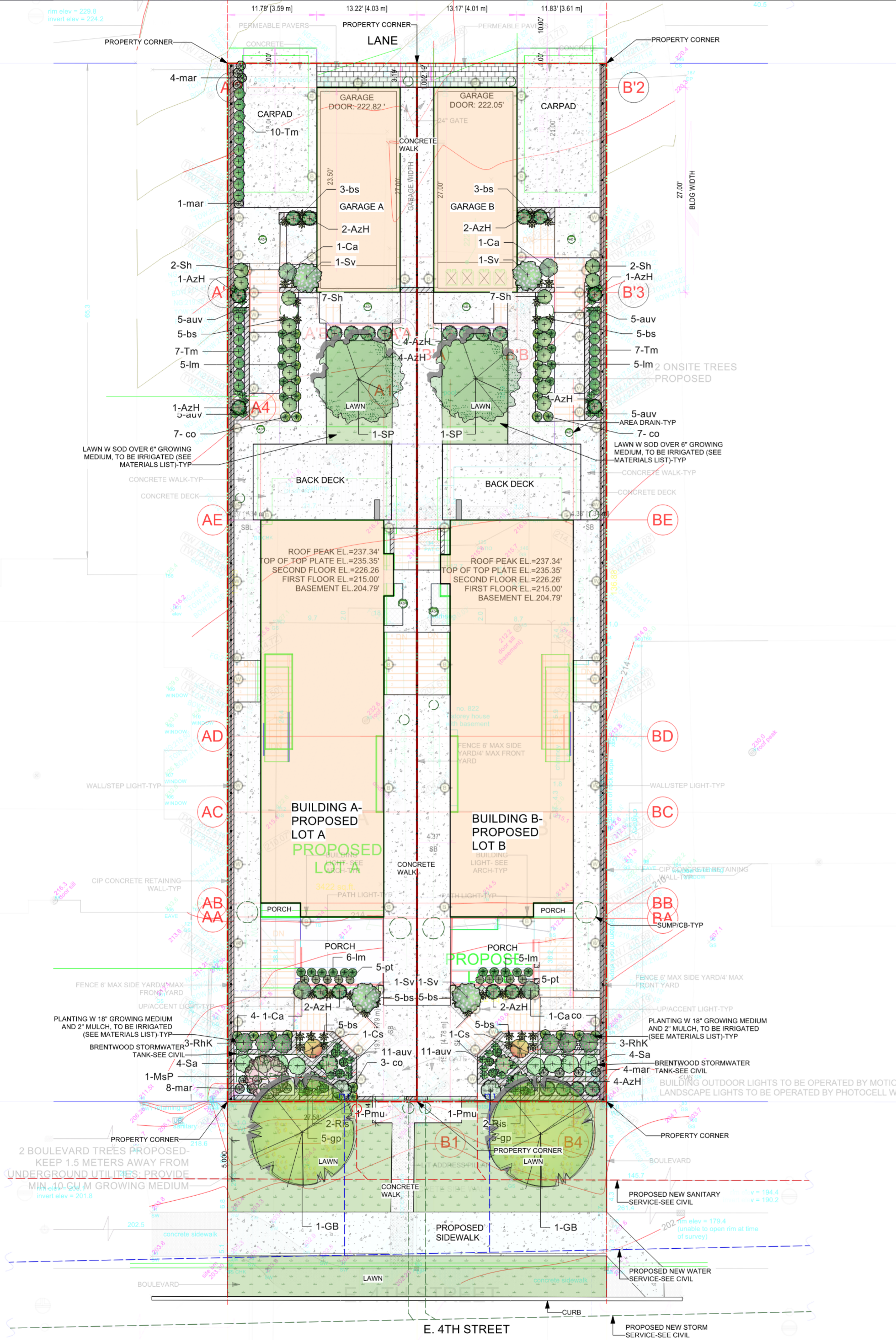
Sheet Title: **LAYOUT**

Project Manager: **STEVE WONG** Project ID: **2023-21**

Drawn By: **SW** Scale: **AS NOTED**

Date: **AUGUST 2023** Sheet No.: **L-1**  
 CAD File Name: **822 E4 NV.vwx** of 5





**PLANT LIST 822 4TH ST. EAST NORTH VAN.**

Botanical Name	Common Name	No.	Size	Spacing	Sym
<b>TREES</b>					
Ginkgo biloba 'Princeton Sentry'	Ginkgo	2	7 cm	as shown	GB
Stewartia pseudocamellia	Stewartia	2	7 cm	as shown	SP
<b>SHRUBS</b>					
Azalea 'Hino Crimson'	Azalea	24	#2 pot	as shown	AzG
Cornus alba 'Elegantissima'	Variigated dogwood	4	#2 pot	as shown	Ca
Cornus stolonifera	Redtwig dogwood	2	#2 pot	as shown	Cs
Magnolia stellata 'Pink Star'	Star magnolia	1	1.5 m	as shown	MsP
Pinus mugo mugo	Dwarf mugo pine	2	#2 pot	as shown	Pmu
Rhododendron 'Kalinka'	Rhododendron	6	#5 pot	as shown	RhD
Ribes sanguinum	Red flowering currant	4	#2 pot	as shown	Ris
Sarcococca hookeriana humilis	Sweet box	18	#2 pot	as shown	Sh
Symphoricarpos alba	Snowberry	8	#2 pot	as shown	Sa
Syringa vulgaris 'Belle de Nancy'	Common Lilac	4	#10 pot	as shown	Sv
Taxus media 'Rising Star'	Yew	24	1.2 m	as shown	Tm
<b>VINES, GROUND COVERS AND HERBACEOUS PERENNIALS</b>					
Arctostaphylos uva-ursi	Kinnickinnick	42	#1 pot	as shown	auv
Blechnum spicant	Deer fern	36	#1 pot	as shown	bs
Carex oshimensis 'Evergold'	Sedge	25	#1 pot	as shown	co
Gaultheria procumbens	Wintergreen	10	#1 pot	as shown	gp
Liriope muscari 'Big Blue'	Lily turf	21	#1 pot	as shown	lm
Mahonia repens	Creeping oregon grape	17	#2 pot	as shown	Mar
Pachysandra terminalis	Japanese spurge	10	#1 pot	as shown	pt

Contractor to be certified by BCLNA  
 All plants and installation to meet or exceed latest Canadian Landscape standard (CLS) #1 standards  
 Contractor to verify numbers and placement of plants prior to installation

**GENERAL LANDSCAPE NOTES**

- All landscape works are to meet the specifications and standards of the latest edition of the CANADIAN LANDSCAPE STANDARD, published by the Canadian Society of Landscape Architects and the Canadian Nursery landscape Association.
- All landscape works to be carried out by a contractor with minimum 5 years' experience doing work similar in scope and size, and on at least 3 comparable projects. The contractor needs to be a member in good standing with the appropriate trade organization: eg. B.C. Landscape and Nursery Association (BCLNA), Irrigation Industry Association of B.C. (IIABC). Execution of work to be under the direct supervision of qualified industry certified technicians.
- All grades to meet adjacent grades at property line. All stormwater is to be contained on site and away from adjacent properties. All hard surfaces to be sloped a minimum of 1.5%, and all lawn areas to be sloped a minimum of 2% to avoid standing water. Contractor is ultimately responsible for ensuring there is no standing water on site over an extended period.
- No slopes to be steeper than 2.5 horizontal: 1 vertical.
- All plant material and growing medium to meet Canadian Landscape Standard #1 specifications. Plant search area is to be any plant nursery within the Lower Mainland. Plant substitutions are only allowed if approved by Landscape Architect. Suggested plant substitutions shall be of similar species and of at least equal size to those originally specified.
- All shrub beds to contain minimum 18" (450) mm depth of approved growing medium over scarified subgrade. All lawn areas to contain minimum 6" (150) mm of approved growing medium over scarified subgrade.
- All guardrails are required wherever the fall height is over 2 ft. Guardrails to be a minimum 42" high from any climbable surface surface. Maximum openings between pickets to be under 4".
- Stairs to have consistent rise/run for risers and treads. Stair treads to slope 2% to front edge of tread for drainage and constructed with materials or finishes to prevent slip falls. All stairs over 2 risers to have handrails between 32" to 38" high from the front of stair treads, and to extend 12" past the end of top/bottom treads.
- Exterior ramps to adhere to BC Building code if greater than 5% slope. Ramps to be maximum of 8.3% and minimum 5' width. Handrails required on both sides. Construction to adhere to BC Building code.
- All retaining walls and structures over 4 ft. in height or if there are issues with soil stability require signoff from the appropriate engineer (eg structural, geotechnical). Contractor to provide engineer stamped shop drawings for Landscape Architect.
- Landscape installation to be reviewed by registered Landscape Architect.

No.	Date	Issue/Revision Notes
A	9/1/2023	REVIEW

COPYRIGHT RESERVED: This drawing and design are, and at all times shall remain the property of SW Landscape Architect, and cannot be used, reproduced or distributed without the written consent of SW Landscape Architect.



- LEGEND**
- 219.80 EXISTING ELEVATION
  - 219.33 PROPOSED ELEVATION
  - (TW / 222.25) PROPOSED TOP OF WALL ELEVATION
  - (BW / 223.81) PROPOSED BOTTOM OF WALL ELEVATION
  - PROPERTY LINE
  - AREA DRAIN
  - TRENCH DRAIN

- ASPHALT
- CONCRETE
- FIBAR
- SAND
- STONWORK
- SLABS/TILES
- WOOD DECK
- GRAVEL
- GRASS

Design Firm: SW LANDSCAPE ARCHITECT  
 919 MELBOURNE AVENUE, NORTH VANCOUVER  
 stevewong234@gmail.com 778 834-8959  
 www.swlandscapearchitect.com

Client: 1388368 BC LTD

Project Title: EAST 4TH AVE. SUBDIVISION  
 822 E. 4TH STREET NV

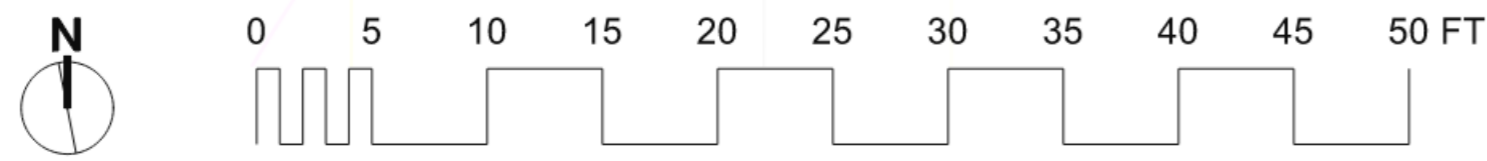
Sheet Title: PLANTING PLAN

Project Manager: STEVE WONG | Project ID: 2023-21

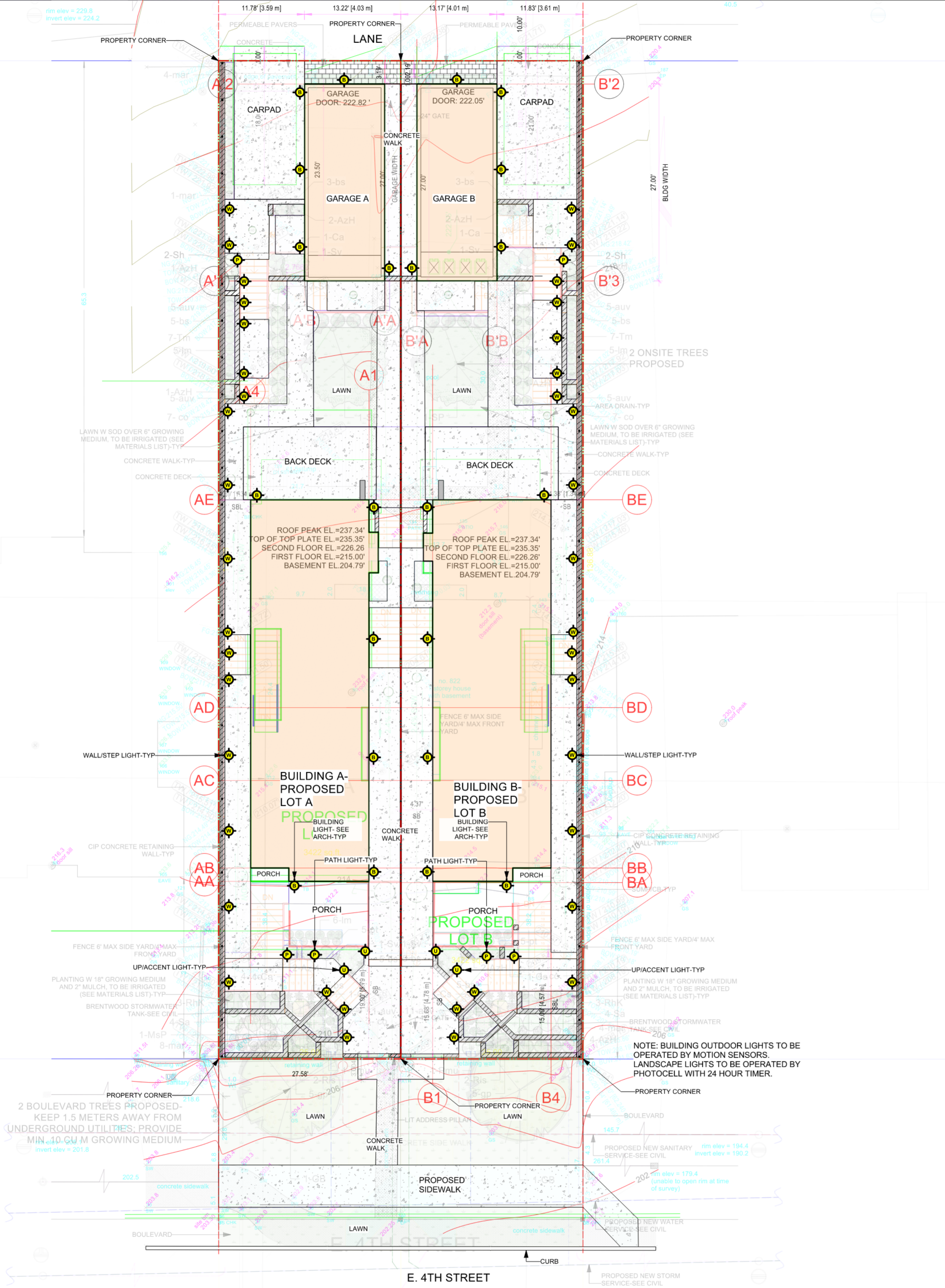
Drawn By: SW | Scale: AS NOTED

Date: AUGUST 2023 | Sheet No.: L-2 of 5  
 CAD File Name: 822 E4 NV.vwx

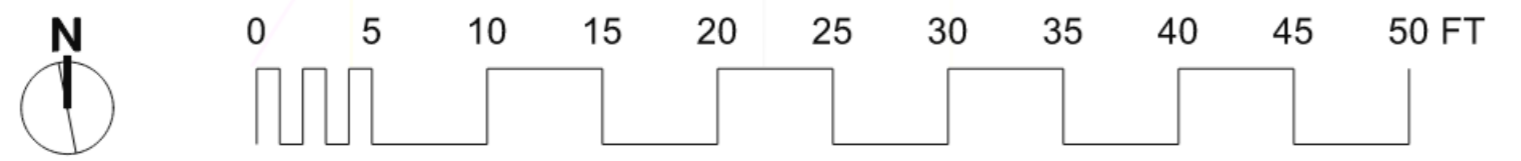
1 PLANTING  
 Scale: 1/8" = 1'-0"



SCALE IS PROVIDED FOR CONVENIENCE  
 DO NOT SCALE DRAWINGS FOR DIMENSIONS



1 LIGHTING PLAN  
Scale: 1/8" = 1'-0"



SCALE IS PROVIDED FOR CONVENIENCE  
DO NOT SCALE DRAWINGS FOR DIMENSIONS



2 KICHLER ACCENT LIGHT  
Scale: N/A



3 KICHLER STEP/WALL LIGHT  
Scale: N/A



4 KICHLER PATH LIGHT  
Scale: N/A

LIGHTING LEGEND

- BOLLARD LIGHT
- STEP LIGHT
- WALL LIGHT
- UP/ACCENT LIGHT
- PATH LIGHT
- HARDSCAPE LIGHT
- DECK LIGHT
- DOWN/ACCENT LIGHT

No.	Date	Issue/Revision Notes
A	9/1/2023	REVIEW

COPYRIGHT RESERVED: This drawing and design are, and at all times shall remain the property of SW Landscape Architect, and cannot be used, reproduced or distributed without the written consent of SW Landscape Architect.



Design Firm: SW LANDSCAPE ARCHITECT  
919 MELBOURNE AVENUE, NORTH VANCOUVER  
steve.wong234@gmail.com 778 834-8959  
www.swlandscapearchitect.com

Client: 1388368 BC LTD

Project Title: EAST 4TH AVE. SUBDIVISION  
822 E. 4TH STREET NV

Sheet Title: LIGHTING PLAN

Project Manager: STEVE WONG | Project ID: 2023-21  
Drawn By: SW | Scale: AS NOTED

Date: AUGUST 2023 | Sheet No.: L-3  
CAD File Name: 822 E4 NV.vwx | of: 5

**GENERAL TREE NOTES**

1. Any permitted tree removal(s) must be performed by a qualified professional.
2. No grade changes are to occur within the critical root zones of any retained trees. Any exposed roots from lines of excavation must be covered with burlap and then poly plastic in an effort to prevent dessication of exposed roots; this root curtain must be removed prior to backfilling. Trees must be adequately watered during the entire construction process.
3. The removal of existing organics within the critical root zones of retained trees must be performed manually, when installing new plant material within the critical root zones of retained trees, if large roots (1.5' diameter and larger) are encountered, then new plantings must be shifted to accommodate. No more than 3" of additional soil for new landscaping may be added within any critical root zone.
4. Any excavation work or work within the protection zone of retained trees requires the supervision of a certified arborist. This includes, but is not limited to; demolition, the installation of any permeable or impermeable surfaces (concrete, asphalt, pavers, etc.), installation of permanent or temporary services (gas, sewer, storm, sanitary, communication, electrical, irrigation, etc.), during the installation of patios, driveways, or any hardscape, during the installation of footings for fences, walls, decorative walls, retaining walls, decks, and deck footings.
5. Construction materials must not be stored within the tree protection zone (TPZ) of trees to be retained, and TPZ fencing to remain intact for the entire construction process. Signage must be clearly posted on each side of the barrier indicating 'Tree protection zone-Do not enter or modify'. Contact your project arborist for any TPZ barrier issues.
6. Refer to arborist report and drawing where applicable.

**ONSITE TREE SUMMARY**

TREES REMOVED	0
ONSITE TREES PROPOSED	2
BOULEVARD TREES PROPOSED	2

**NO CURRENT ONSITE OR OFFSITE TREES IMPACTED BY PROPOSED DEVELOPMENT**

No.	Date	Issue/Revision Notes
A	9/1/2023	REVIEW

COPYRIGHT RESERVED: This drawing and design are, and at all times shall remain the property of SW Landscape Architect, and cannot be used, reproduced or distributed without the written consent of SW Landscape Architect.



Design Firm: SW LANDSCAPE ARCHITECT  
 919 MELBOURNE AVENUE, NORTH VANCOUVER  
 stevewong234@gmail.com 778 834-8959  
 www.swlandscapearchitect.com

Client: 1388368 BC LTD

Project Title: EAST 4TH AVE. SUBDIVISION  
 822 E. 4TH STREET NV

Sheet Title: TREE MANAGEMENT

Project Manager: STEVE WONG | Project ID: 2023-21

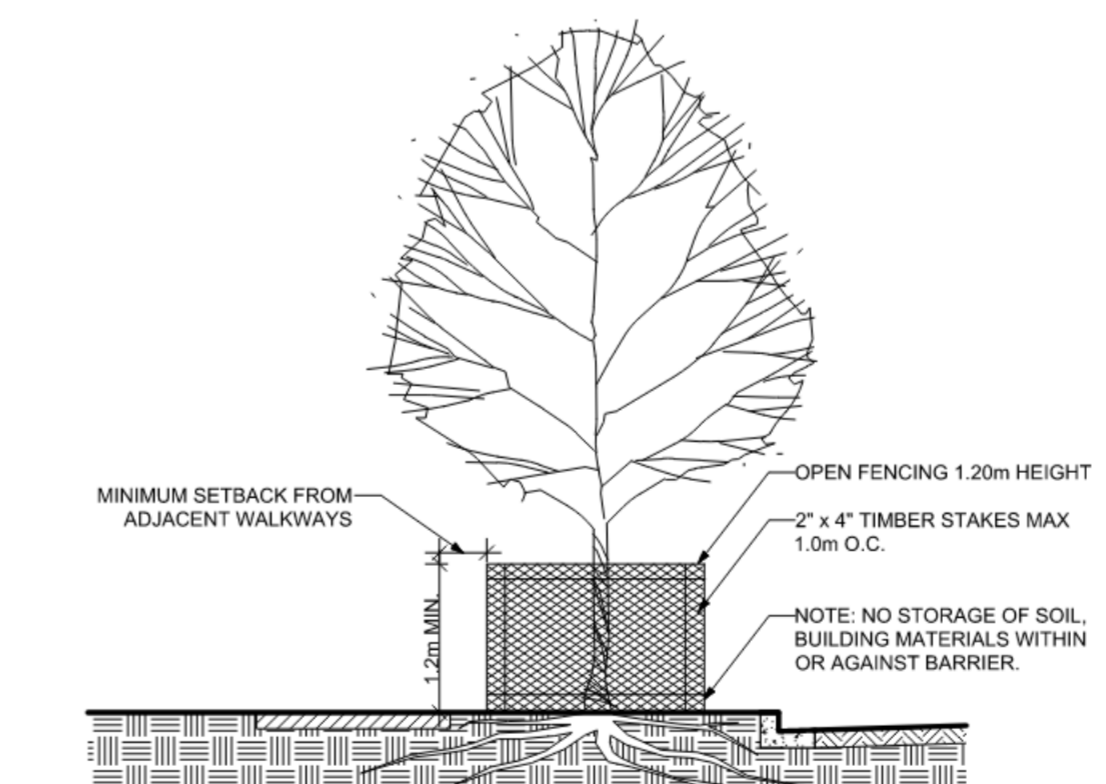
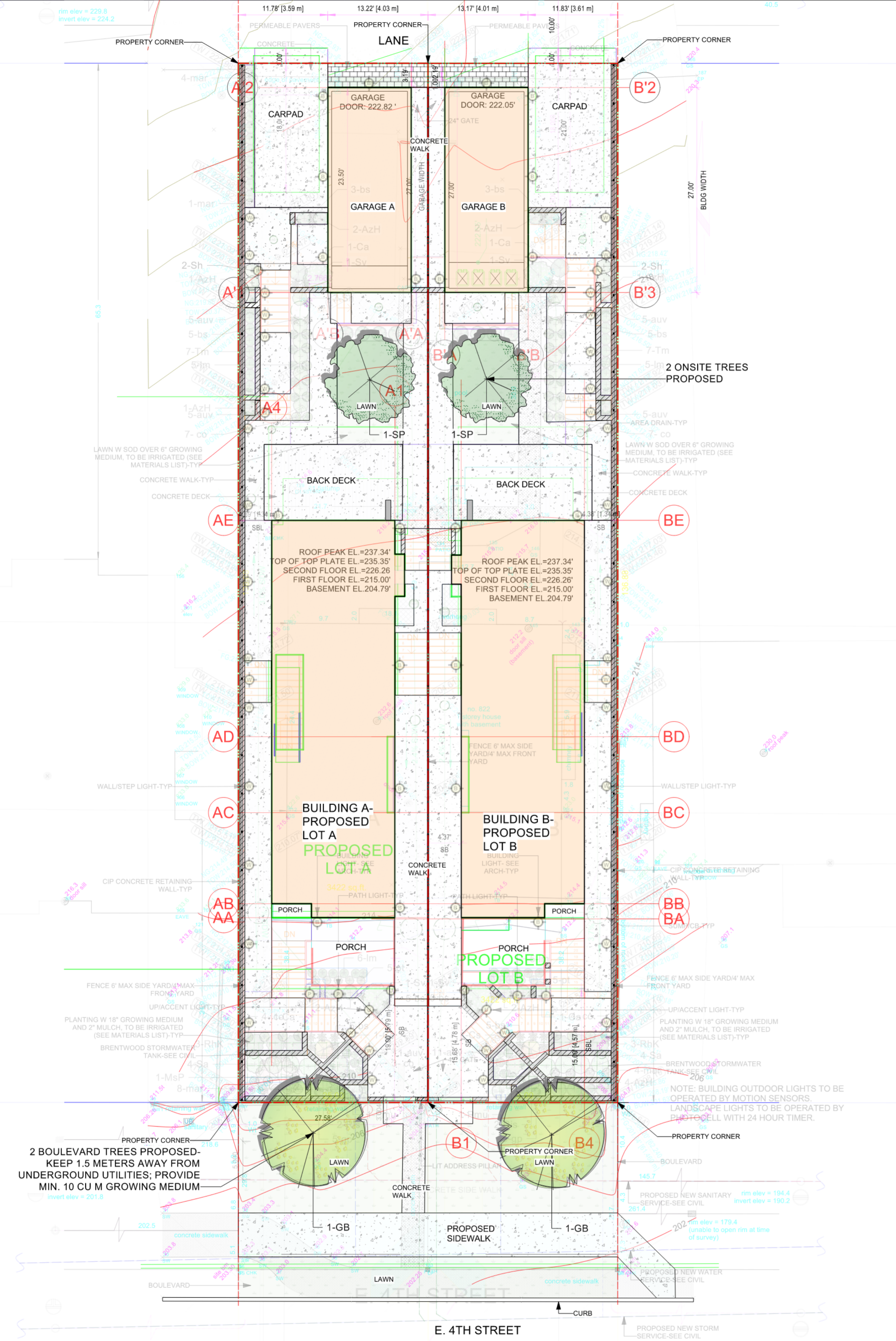
Drawn By: SW | Scale: AS NOTED

Sheet No. L-4

Date: AUGUST 2023

CAD File Name: 822 E4 NV.vwx

5 of 5



**SCHEDULE A - TREE PROTECTION BARRIER**

**TREE PROTECTION DISTANCE TABLE**

TRUNK DIAMETER CM	TRUNK DIAMETER FT	MINIMUM DISTANCE FROM TRUNK (METERS)
25	0.8	1.2
25	0.8	1.5
35	1.0	2.1
45	1.2	2.4
45	1.3	2.7
50	1.5	3.0
55	1.7	3.3
60	2.0	3.6
75	2.5	4.5
90	3.0	5.0
100	3.3	6.0

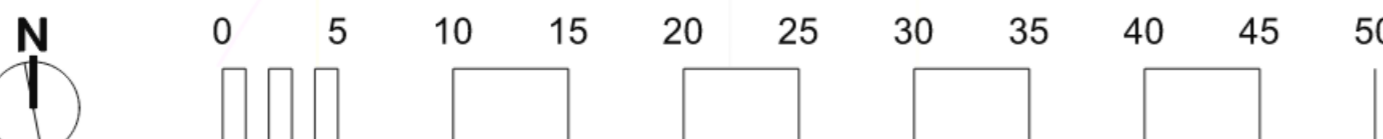
**NOTE:** TREE PROTECTION BARRIERS MUST BE AT LEAST 1.20m IN HEIGHT AND CONSTRUCTED OF EITHER SNOW FENCING SECURELY FASTENED TO 2x4 TIMBER STAKES, OR METAL STAKES SPACED NO FURTHER THAN 1.00m APART.

**LEGEND**

- 219.90 EXISTING ELEVATION
- ⊕ (219.33) PROPOSED ELEVATION
- ⊕ (TW / 222.25) PROPOSED TOP OF WALL ELEVATION
- ⊕ (BW / 223.81) PROPOSED BOTTOM OF WALL ELEVATION
- PROPERTY LINE
- ⊕ AREA DRAIN
- TRENCH DRAIN

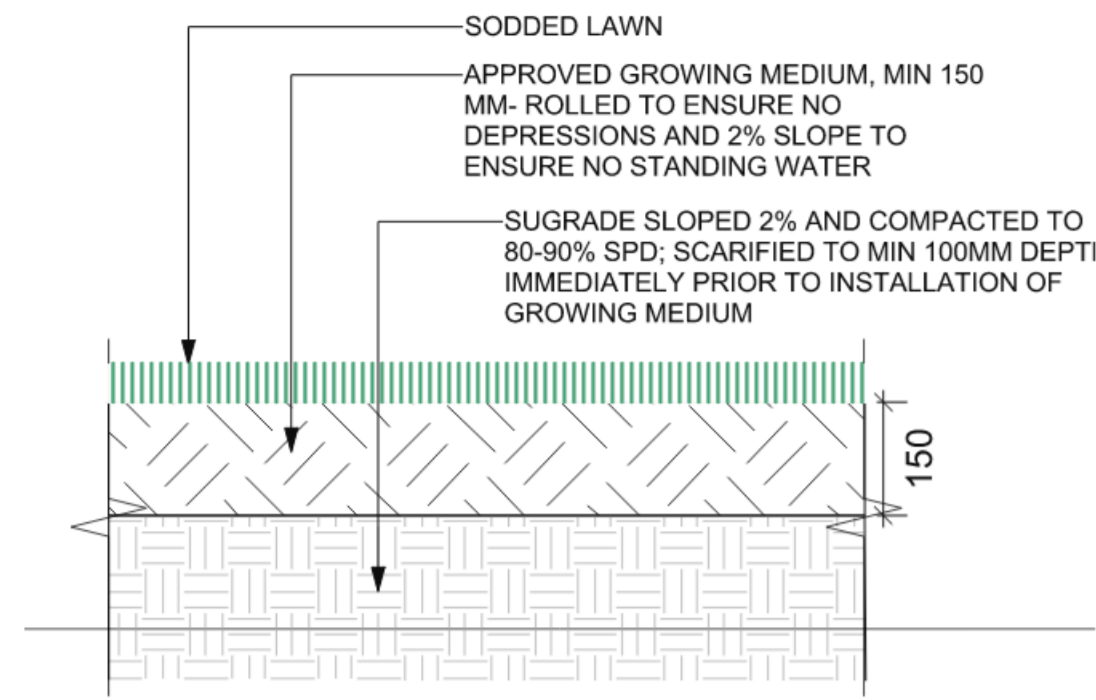
- ASPHALT
- CONCRETE
- FIBAR
- SAND
- STONEMWORK
- SLABS/TILES
- WOOD DECK
- GRAVEL
- GRASS

**1 TREE MANAGEMENT**  
 Scale: 1/8" = 1'-0"

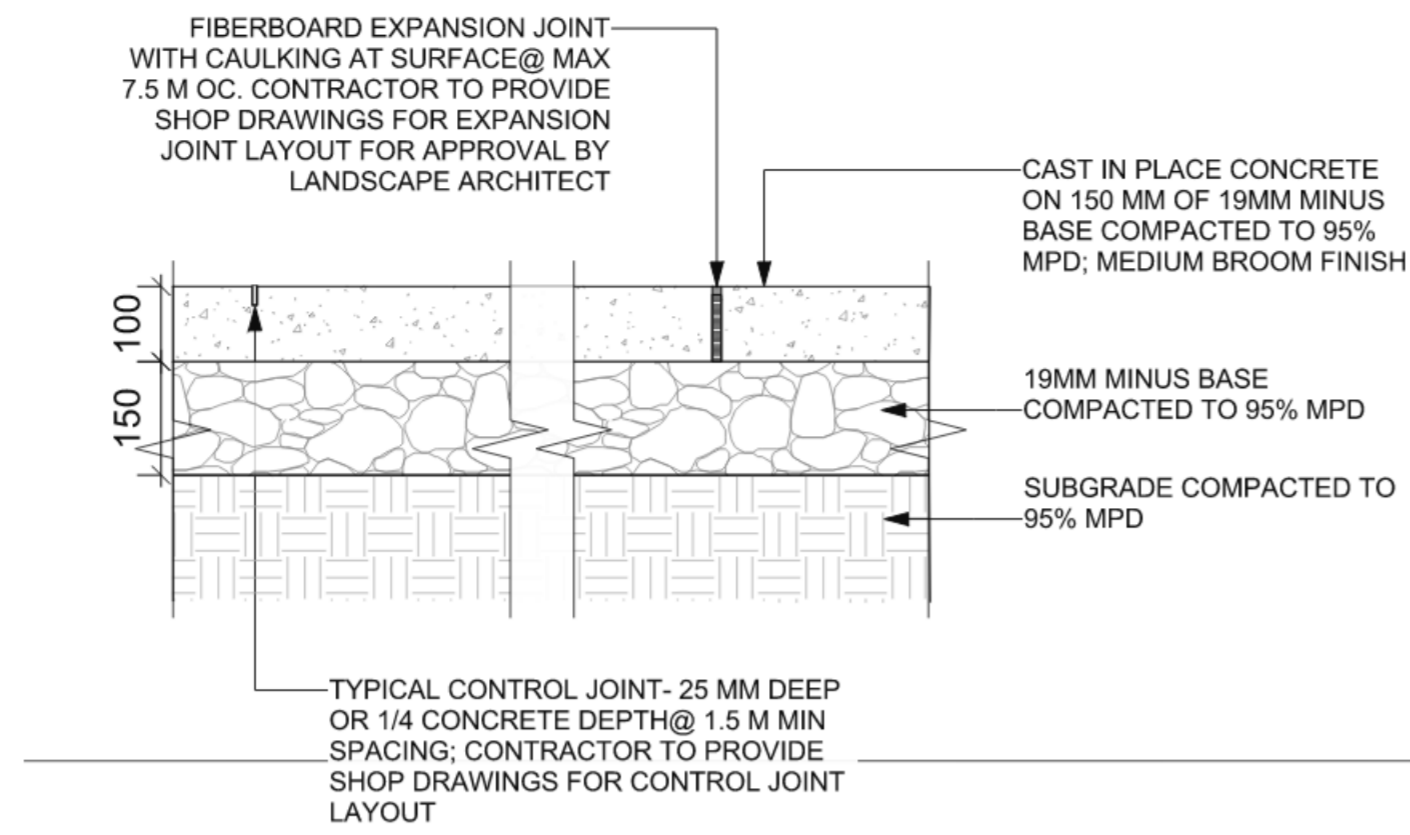


SCALE IS PROVIDED FOR CONVENIENCE  
 DO NOT SCALE DRAWINGS FOR DIMENSIONS

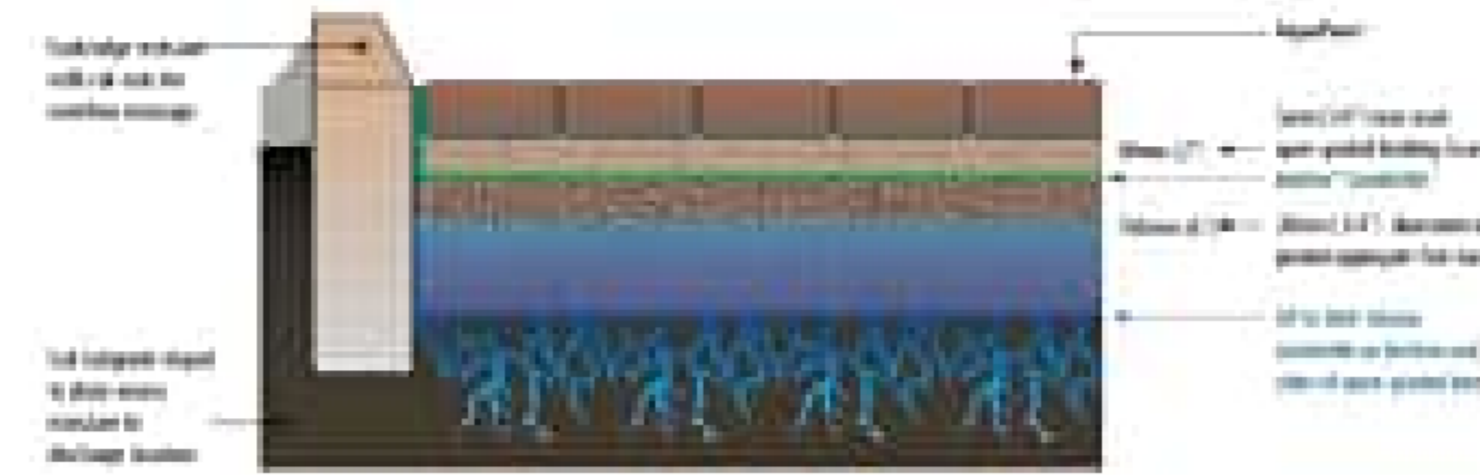
**2 TREE PROTECTION BARRIER**  
 Scale: NTS



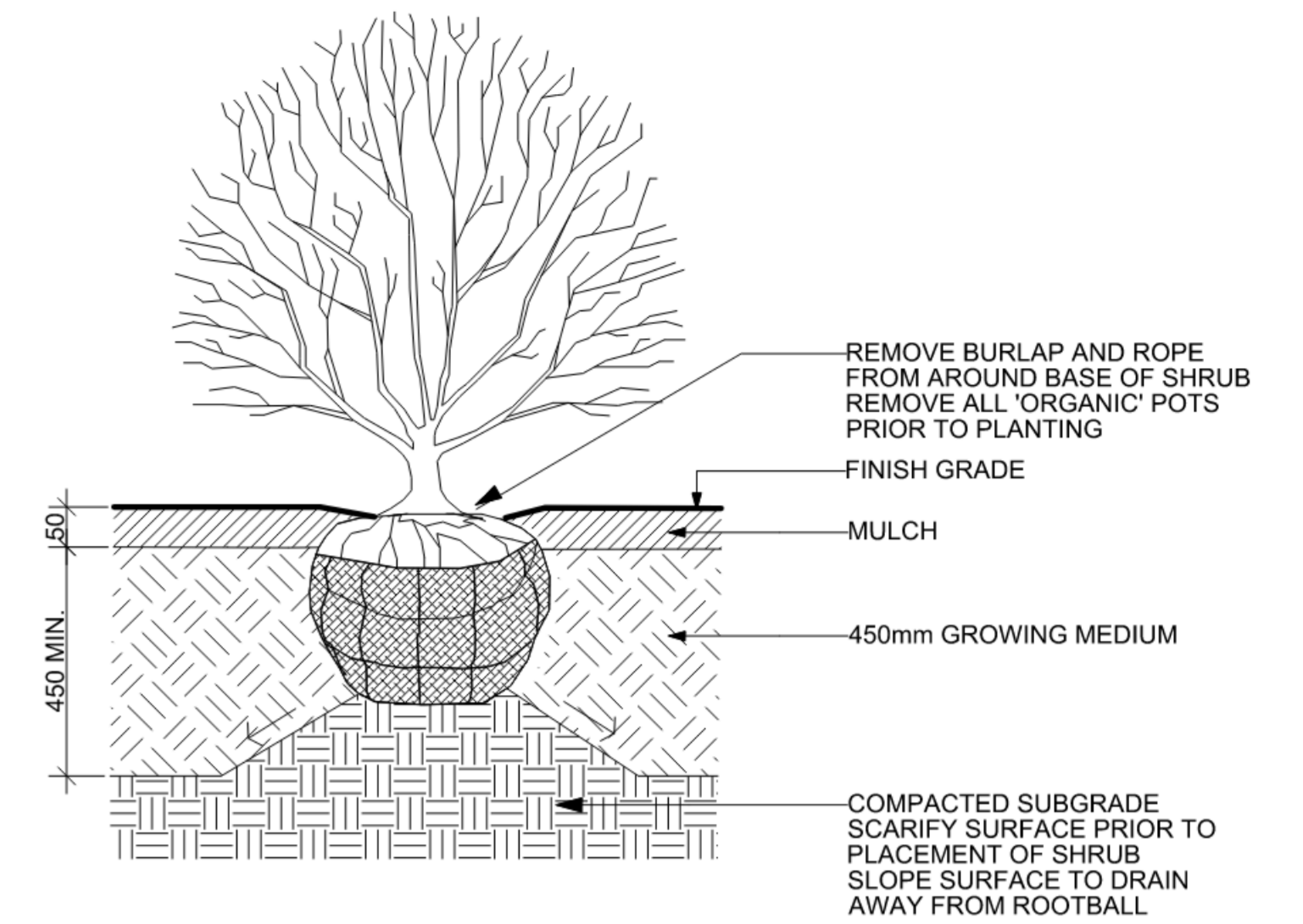
**1 SODDED LAWN**  
Scale: 1:10



**2 CIP FLATWORK**  
Scale: 1:10



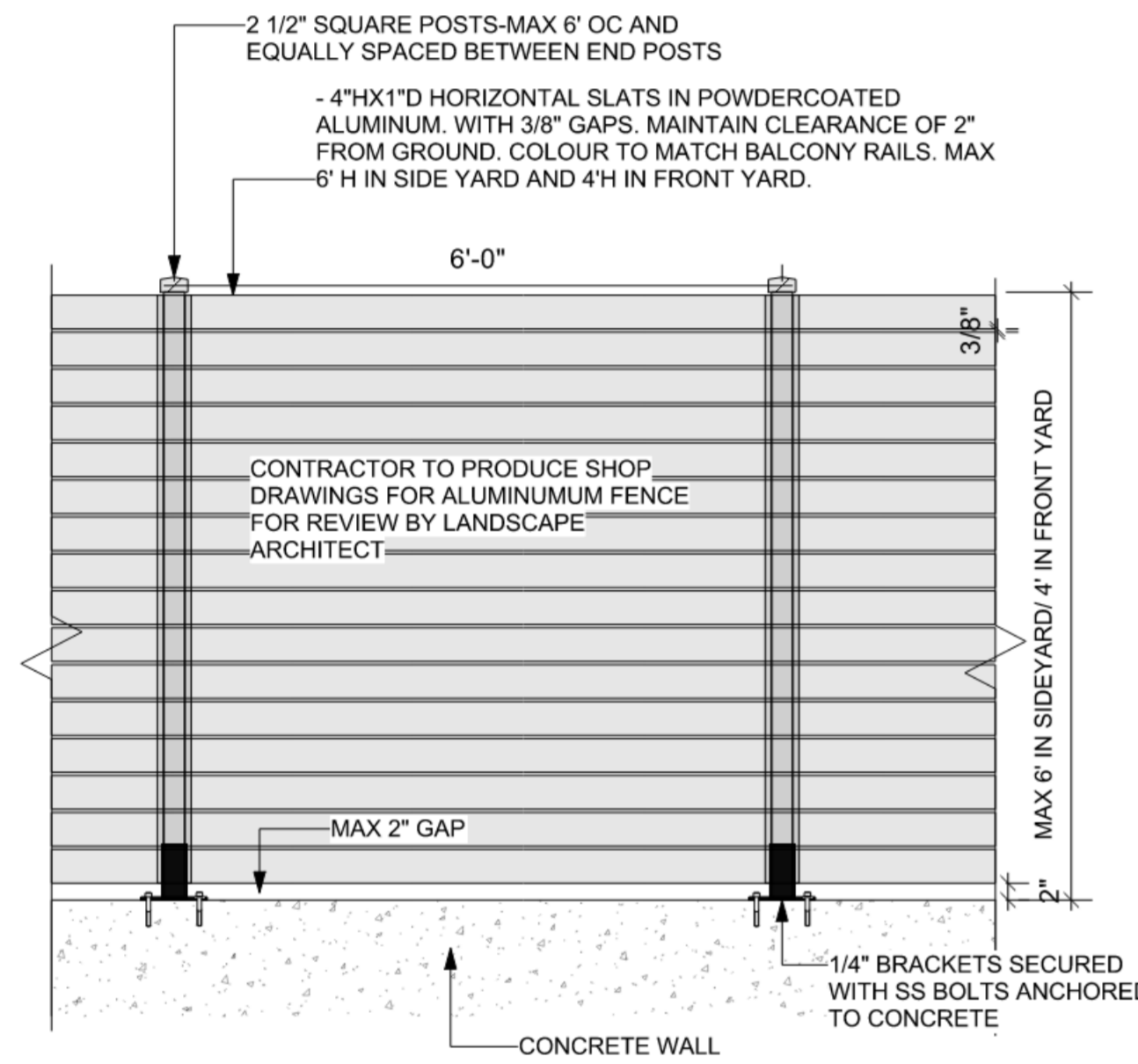
**3 PERMEABLE PAVERS- AQUAPAVE**  
Scale: NTS



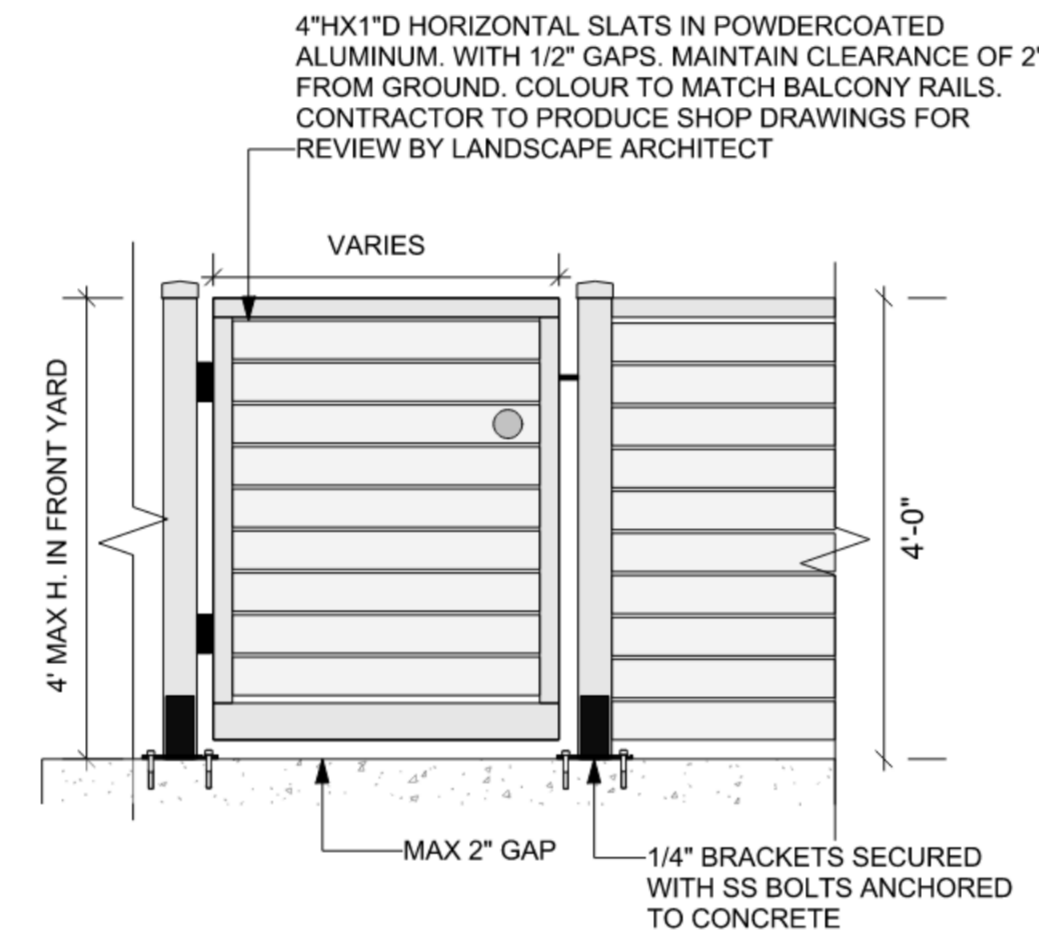
**NOTES:**

- SHRUB TO BE PLANTED WITH ELEVATION OF TOP OF ROOTBALL OR POT LEVEL WITH FINISH GRADE OF GROWING MEDIUM.
- COMPOSTED BARK MULCH AT 50mm DEPTH TO BE KEPT AT LEAST 50mm AWAY FROM STEMS OF SHRUB.
- PLANTING PIT MUST BE FREE DRAINING

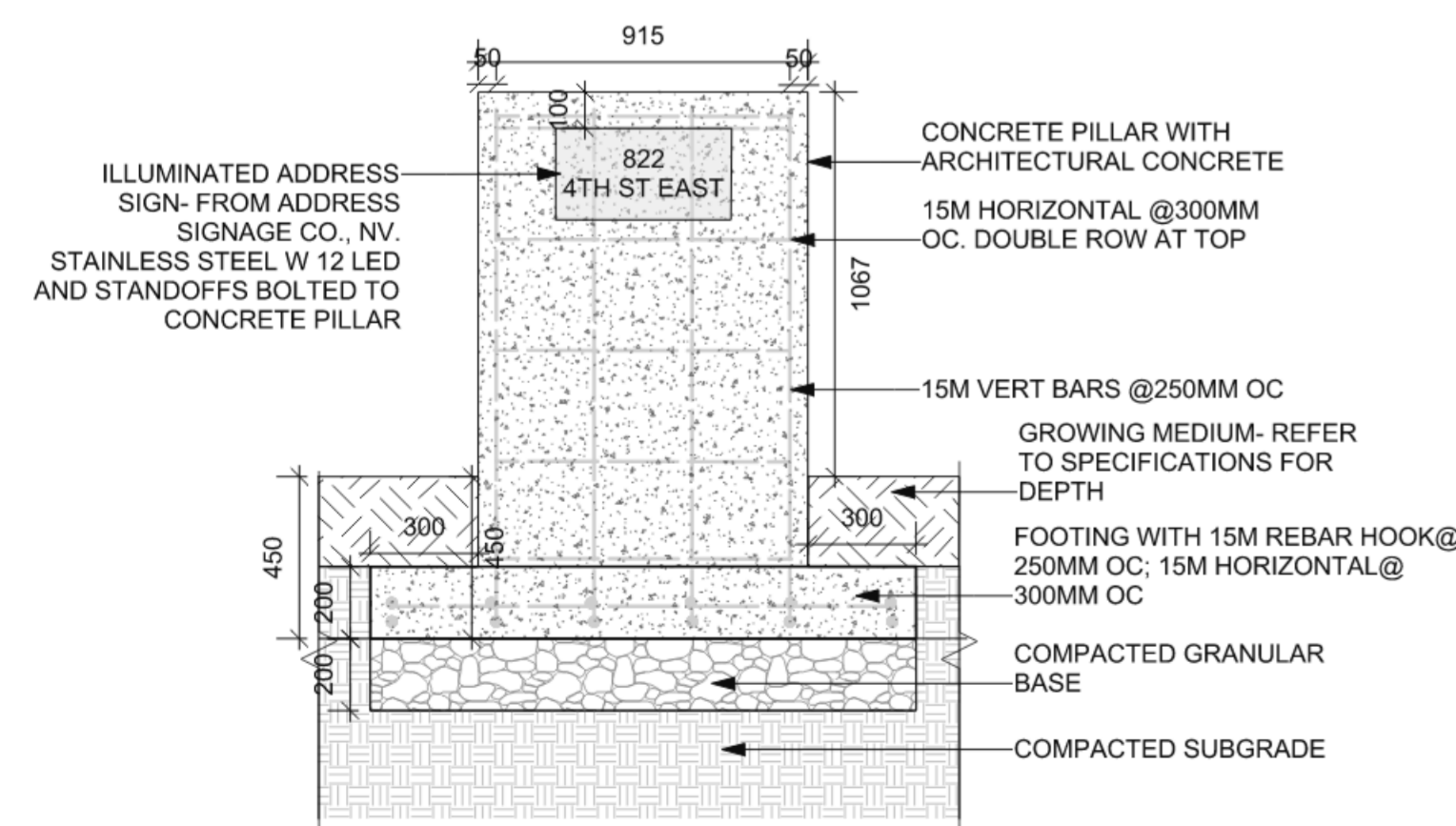
**4 SHRUB PLANTING DETAIL**  
Scale: N/A



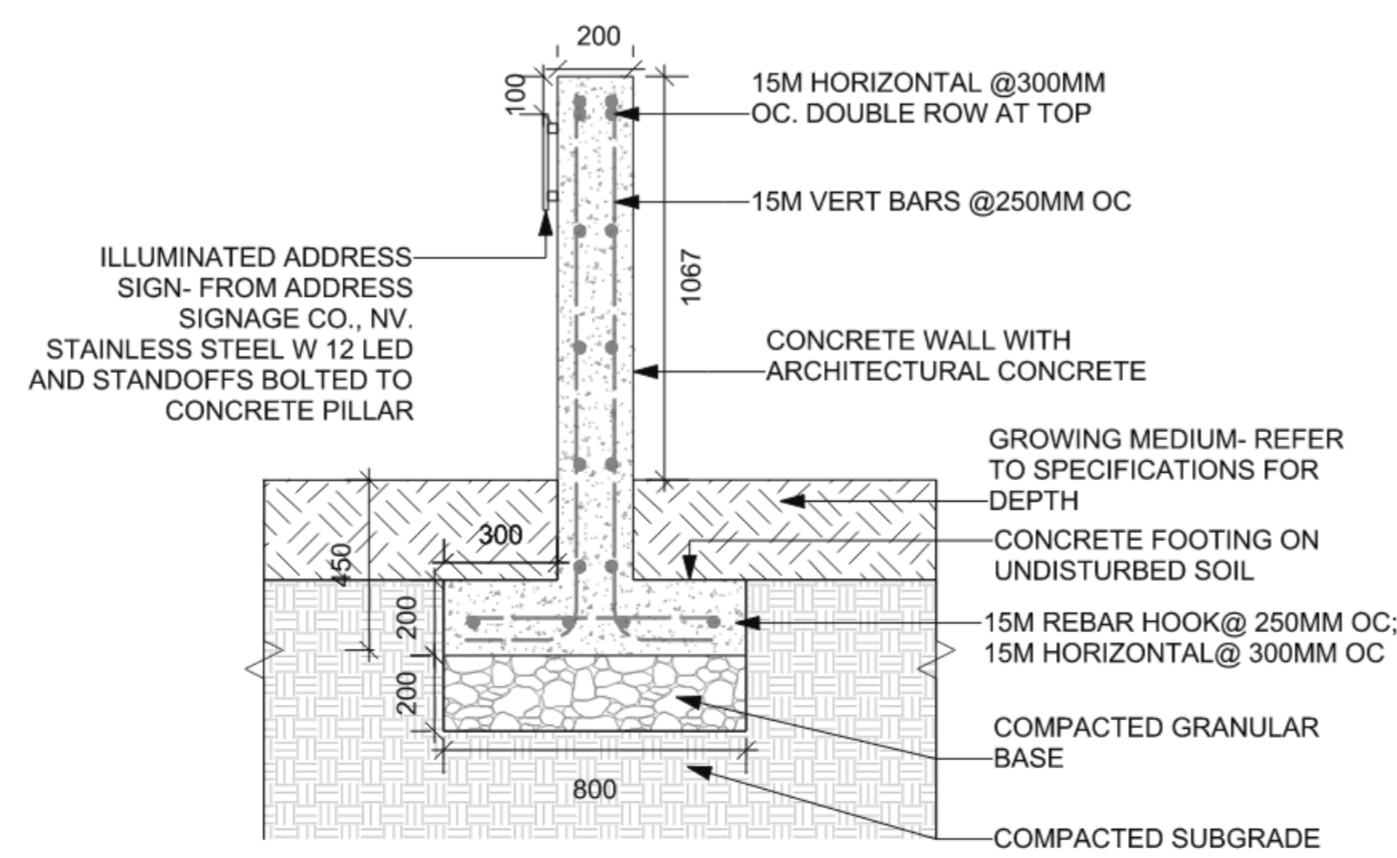
**5 METAL FENCE HORIZONTAL**  
Scale: 1:20



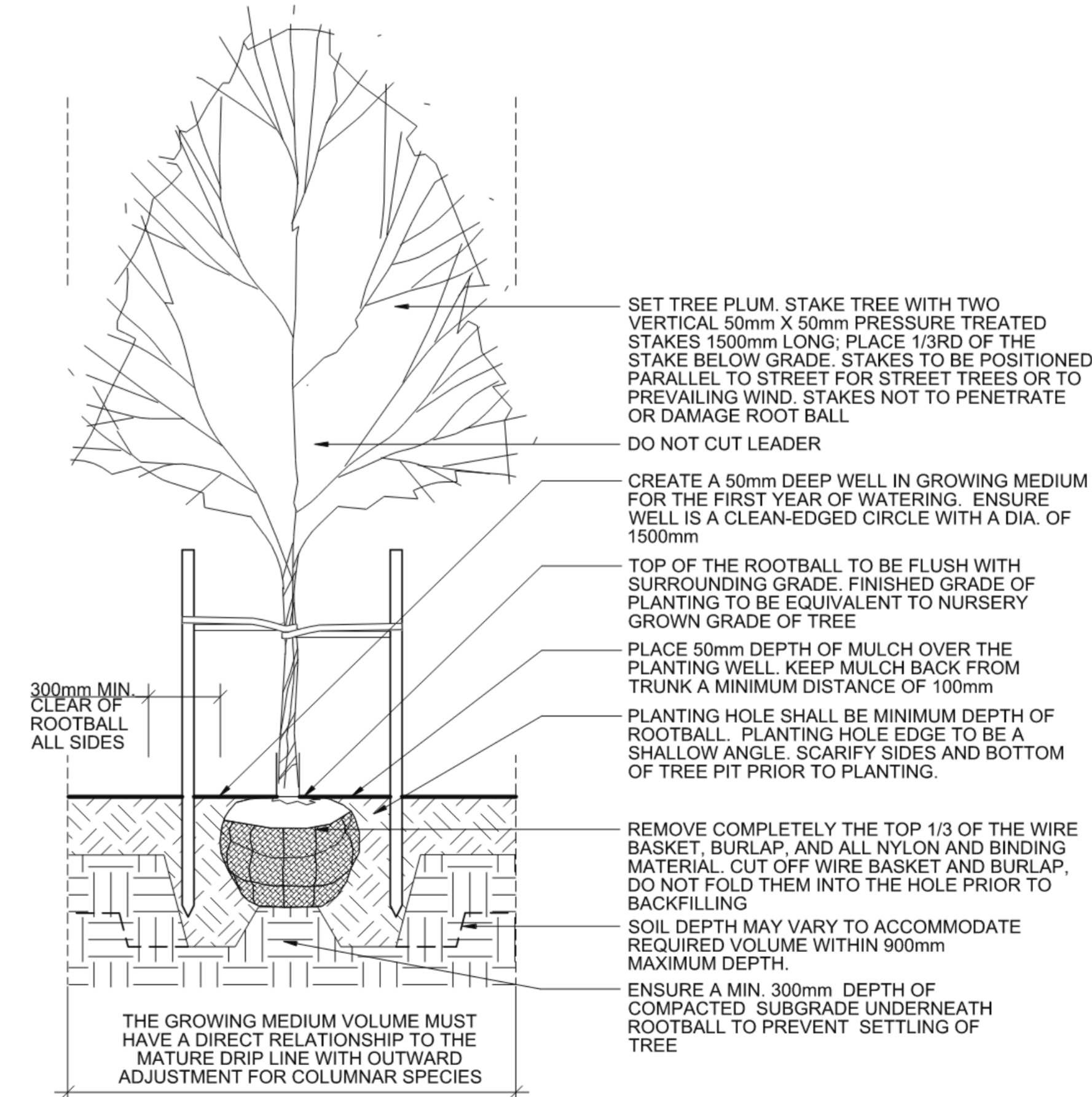
**6 METAL GATE DETAIL**  
Scale: 1:20



**7 ADDRESS PILLAR-FRONT**  
Scale: 1:20



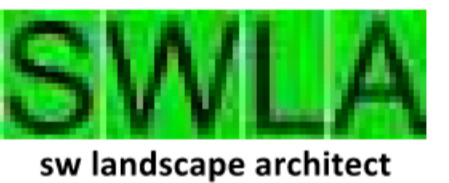
**8 ADDRESS PILLAR-SIDE**  
Scale: 1:20



**9 TREE PLANTING DETAIL**  
Scale: N/A

No.	Date	Issue/Revision Notes
A	9/1/2023	REVIEW

COPYRIGHT RESERVED: This drawing and design are, and at all times shall remain the property of SW Landscape Architect, and cannot be used, reproduced or distributed without the written consent of SW Landscape Architect.



Design Firm: **SW LANDSCAPE ARCHITECT**  
919 MELBOURNE AVENUE, NORTH VANCOUVER  
steve.wong234@gmail.com 778 834-8959  
www.swlandscapearchitect.com

Client: **1388368 BC LTD**

Project Title: **EAST 4TH AVE. SUBDIVISION  
822 E. 4TH STREET NV**

Sheet Title: **DETAILS**

Project Manager: **STEVE WONG** Project ID: **2023-21**

Drawn By: **SW** Scale: **AS NOTED**

Date: **AUGUST 2023** Sheet No.: **L-5**

CAD File Name: **822 E4 NV.vwx** of **5**