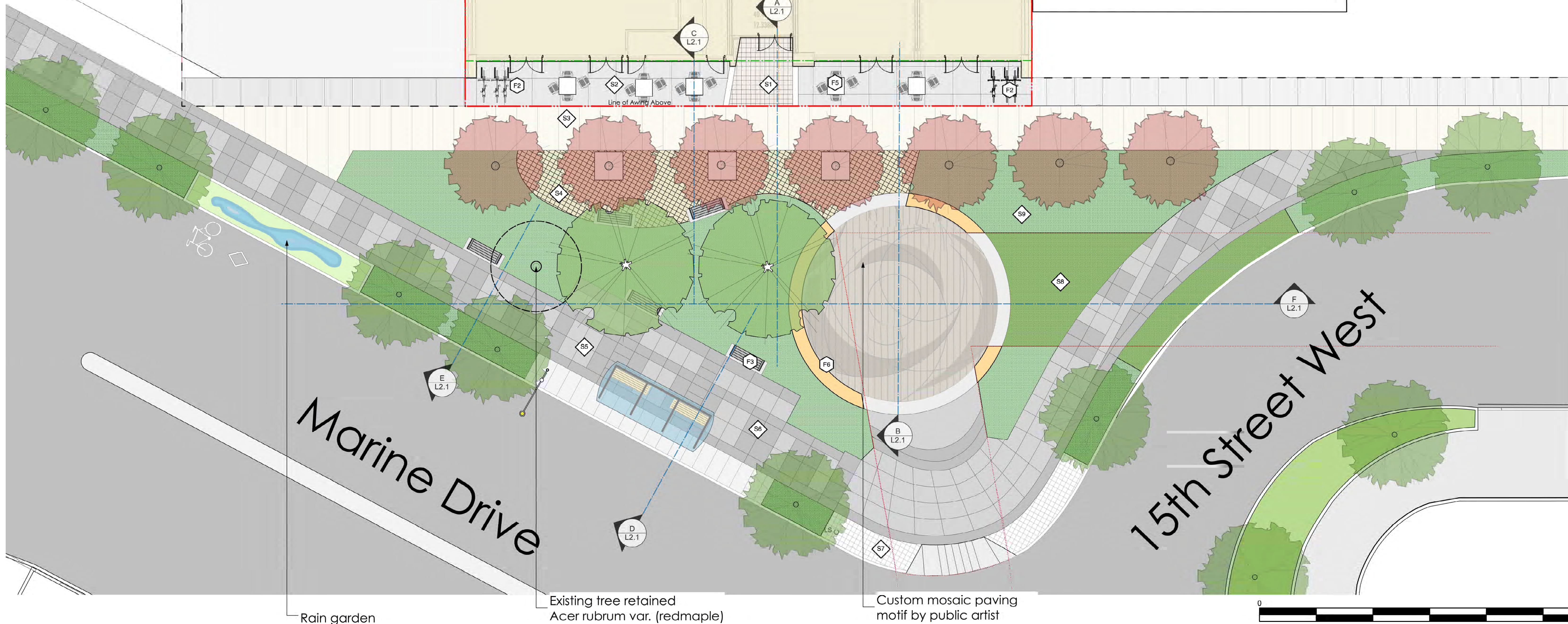


Hardsurfacing		LANDSCAPE NOTES	
KEY	MATERIAL	KEY	MATERIAL
S0	Cast in Place Concrete Paving - Vehicular as per City of North Vancouver Engineering light Finish: Broom finish	S5	Exposed Aggregate Concrete Finish: Exposed Aggregate CIP concrete to City of North Vancouver Standards.
S1	Hydrapressed Concrete Paving Slabs Size: 12' x 24' x 2" Colour: Natural	S6	Cast in Place Concrete Paving - Pedestrian CoV Engineering light broom finish with sawcut pattern as shown on plan CIP concrete to City of North Vancouver Standards.
S2	Hydrapressed Concrete Paving Slabs Size: 18' x 18' x 1-5/8" Colour: Natural	S7	Granite Setts CIP concrete to City of North Vancouver Standards.
S3	Cast in Place Concrete Paving - Pedestrian City of North Vancouver Engineering light broom finish with sawcut pattern as shown on plan	S8	Reinforced Grass-Heavy Vehicle
S4	Feature Paver Colour: Natural CIP concrete to City of North Vancouver Standards.	S9	Planter area

Furniture + Structure		Furniture + Structure			
KEY	Legend	Description	KEY	Legend	Description
F1	[Symbol]	Metal screen	F4	[Symbol]	Planter
F2	[Symbol]	Creative Pipe Bike Rack Supplier: G Media Outdoor Advertising Inc QTY: 8	F5	[Symbol]	Movable Chairs and tables
F3	[Symbol]	Boulevard seating Model: RD-28 Supplier: Victor Stanley	F6	[Symbol]	18" high seat wall

Softscape				
SYM	QTY	BOTANICAL NAME	COMMON NAME	SIZE/SPACING/COMMENTS
[Symbol]		Acer rubrum 'Armstrong'	Armstrong Red Maple	
[Symbol]		Prunus X yedoensis	Yoshino Cherry	
[Symbol]		Quercus palustris	Green Pillar Pin Oak	

- All work shall meet or exceed the requirements as outlined in the Current Edition of the Canadian Landscape Standard.
- Plant sizes and related container classes are specified according to the current edition of the Canadian Landscape Standard. For container classes #3 and smaller, plant sizes shall be as shown in the plant list and the Standard; for all other plants, both plant size and container class shall be as shown in the plant list. Specifically, when the plant list calls for #5 class containers, these shall be as defined in the BCNTA (A+B) Standard.
- All 'Soft Landscape Areas' are to be irrigated with a high efficiency design build irrigation system to IASBC Standards, c/ w rain sensor.
- All trees to be staked in accordance with BCNTA Standards.
- ALL STREET TREES install 8' x 18" Deep Root Barrier centred on each tree between tree pit and sidewalk (side of tree adjacent to sidewalk). Refer to Specification.
- Soil depths to meet or exceed the Canadian Landscape Standard.
- Trenching for utility connectors to be coordinated with Engineering Department to ensure safe root zones of retained trees. Methods of tree protection for street trees to be approved by Park Board.
- New street trees to be confirmed prior to issuance of the building permit. Park Board to inspect and approve after tree planting completion.
- For all offsite layout and grading information - REFER TO CIVIL.
- For zoning classifications and legal information - REFER TO ARCHITECTURAL.
- For the dimensioned Site Plan - REFER TO ARCHITECTURAL.
- Lighting to be at safety levels with accent lighting in key areas - REFER TO ELECTRICAL.



N

01	Nov 23-21	Issued for Rezoning
no.:	date:	item:
Revision:		

DURANTE KREJCI LTD.
 102 - 1637 West 5th Avenue
 Vancouver B.C. V6J 1N5
 P:604.684.4611
 F:604.684.0577
 www.dk.bc.ca

Project:

**880 west 15th street
North vancouver**

Jadasi Development

Draw by: AL

Check by: PK

Date: Nov 08, 2021

Scale: 1/8" = 1'-0"

Drawing Title:

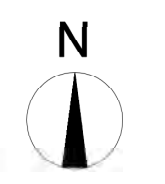
**Landscape Site Plan-
Ground Level**

Project No.:
21022

Sheet No.:

L 1.1





01	Nov 23-21	Issued for Rezoning
no.:	date:	item:
Revision:		
DURANTE KRELUK LTD. 102 - 1637 West 5th Avenue Vancouver B.C. V6J 1N5 P:604.684.4611 F:604.684.0577 www.dkl.bc.ca		

Project:
 880 west 15th street
 North vancouver
 Jadasi Development

Draw by: AL
 Check by: PK
 Date: Nov 08, 2021
 Scale: 1/8" = 1'-0"
 Drawing Title:

Landscape Interim Plan

Project No.:
 21022
 Sheet No.:

L 1.2



01	Nov 23-21	Issued for Rezoning
no.:	date:	item:
Revision:		

dk DURANTE KREJUK LTD.
 102 - 1637 West 5th Avenue
 Vancouver B.C. V6J 1N5
 P:604.684.4611
 F:604.684.0577
 www.dk.bc.ca

Project:

880 west 15th street
 North vancouver
 Jadasi Development

Draw by: AL

Check by: PK

Date: Nov 08, 2021

Scale: 1/8" = 1'-0"

Drawing Title:

Landscape Site Plan-
 Level 2

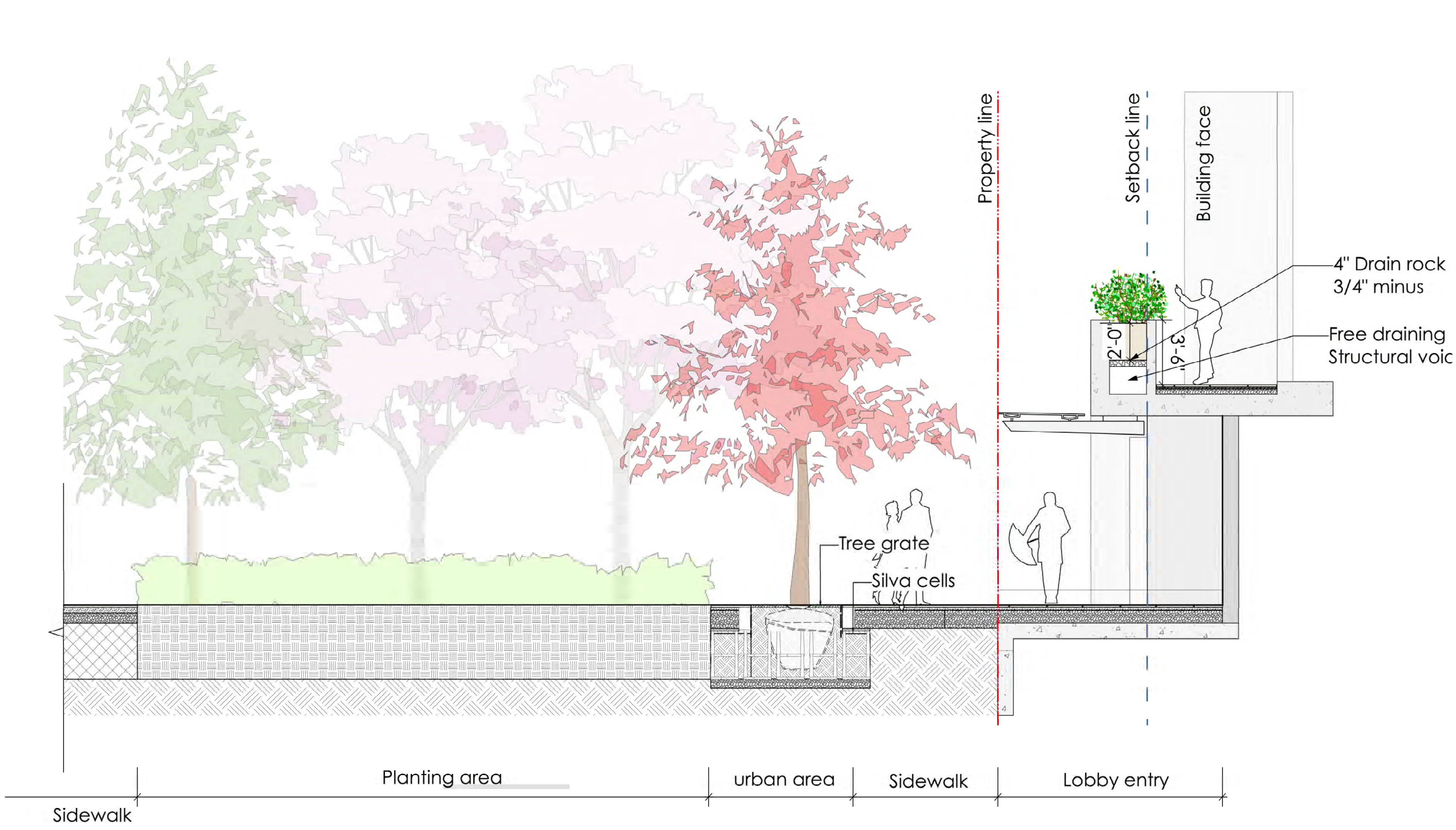
Project No.:

21022

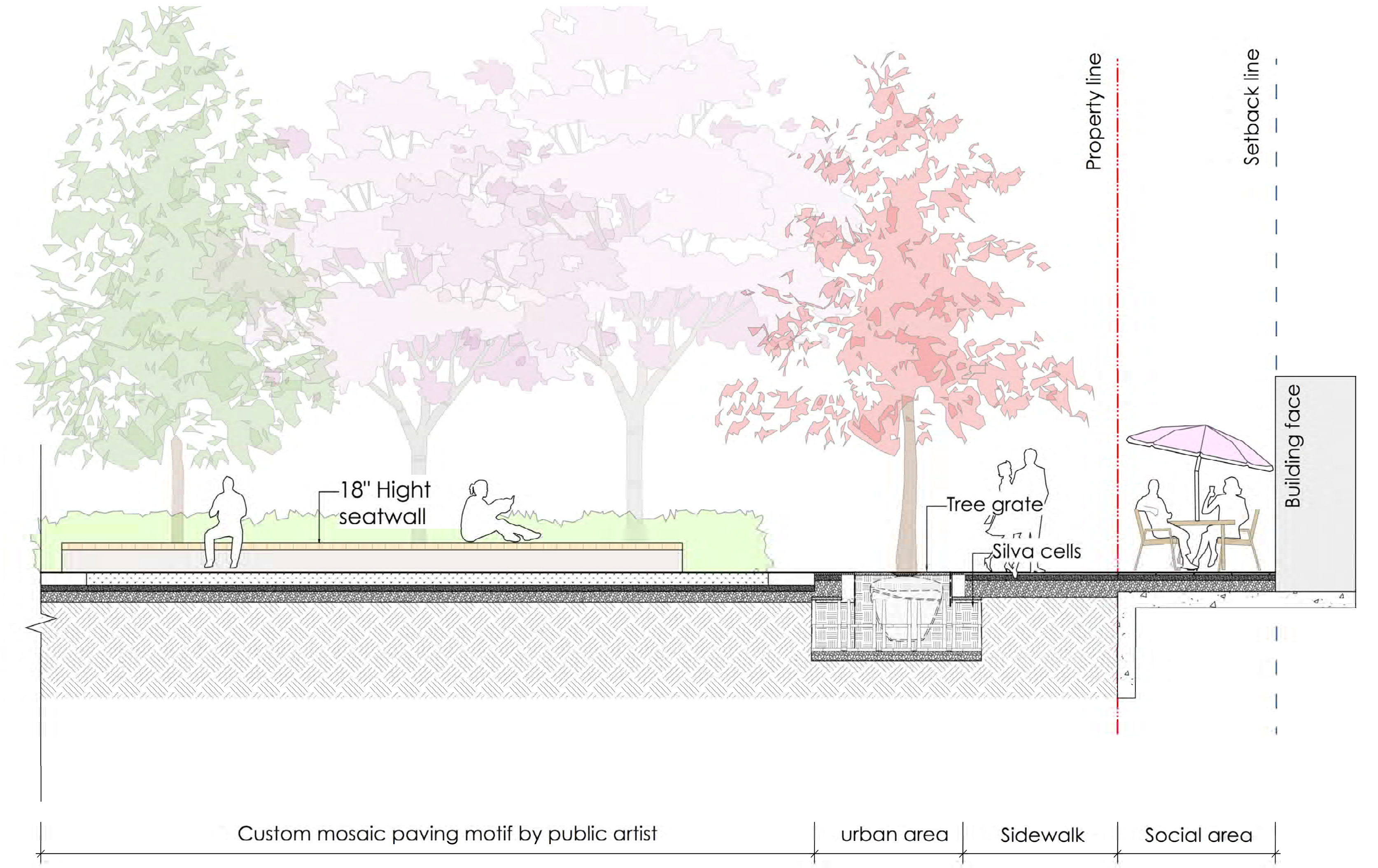
Sheet No.:

L 1.3

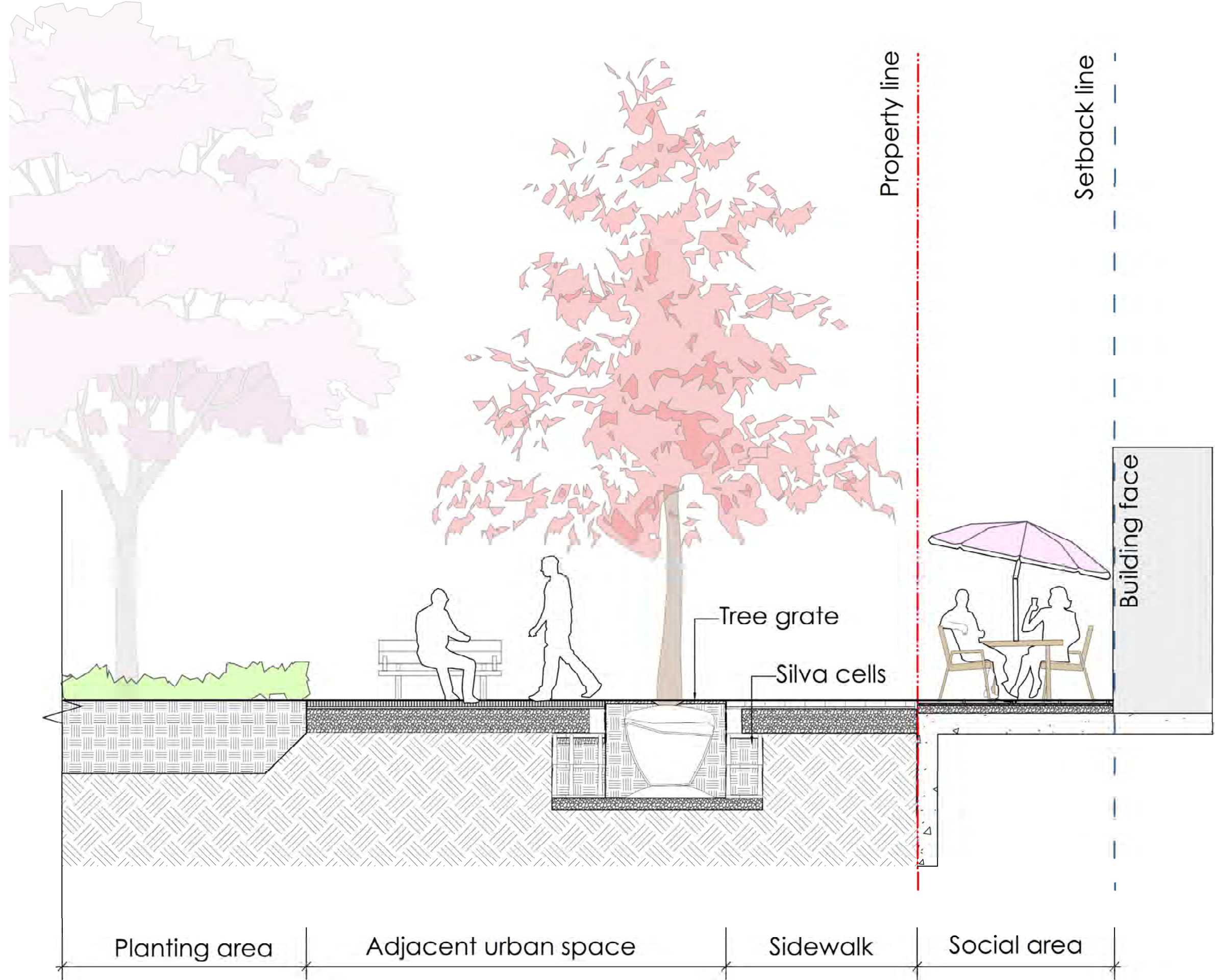




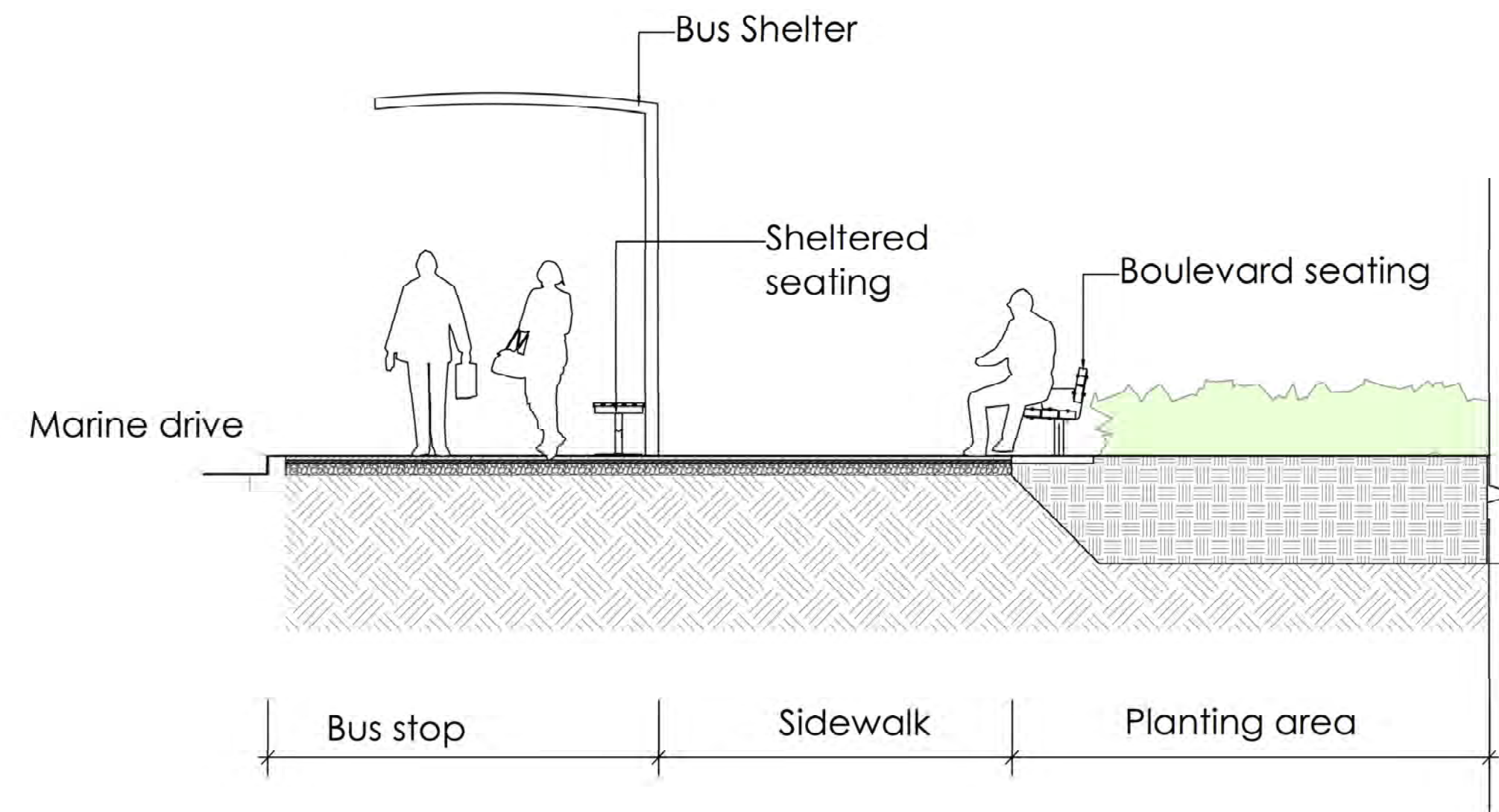
A Main entrance through planting area
L1.1 Scale: 1/4" = 1'-0"



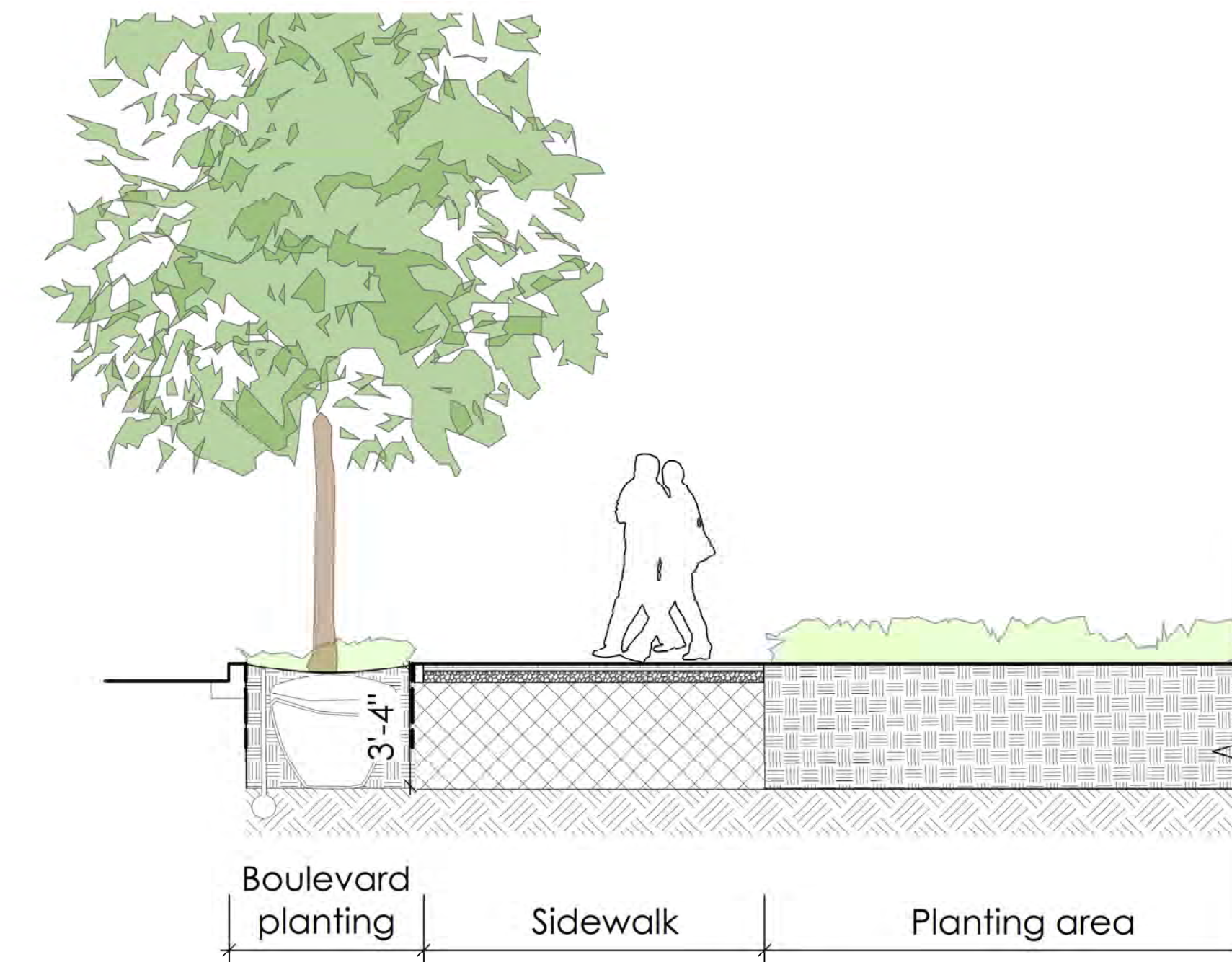
B Outdoor amenity area and public art plaza
L1.1 Scale: 1/4" = 1'-0"



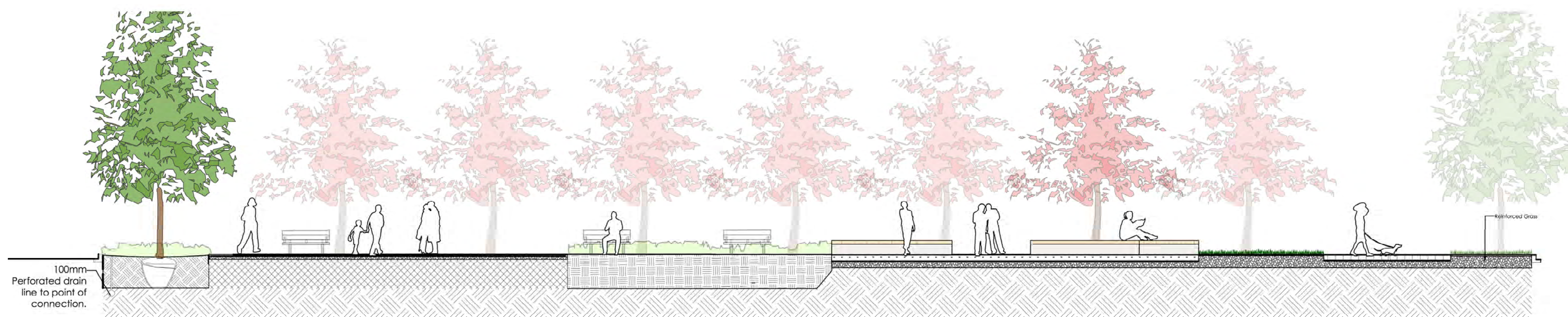
C Outdoor amenity area and adjacent urban space
L1.1 Scale: 1/4" = 1'-0"



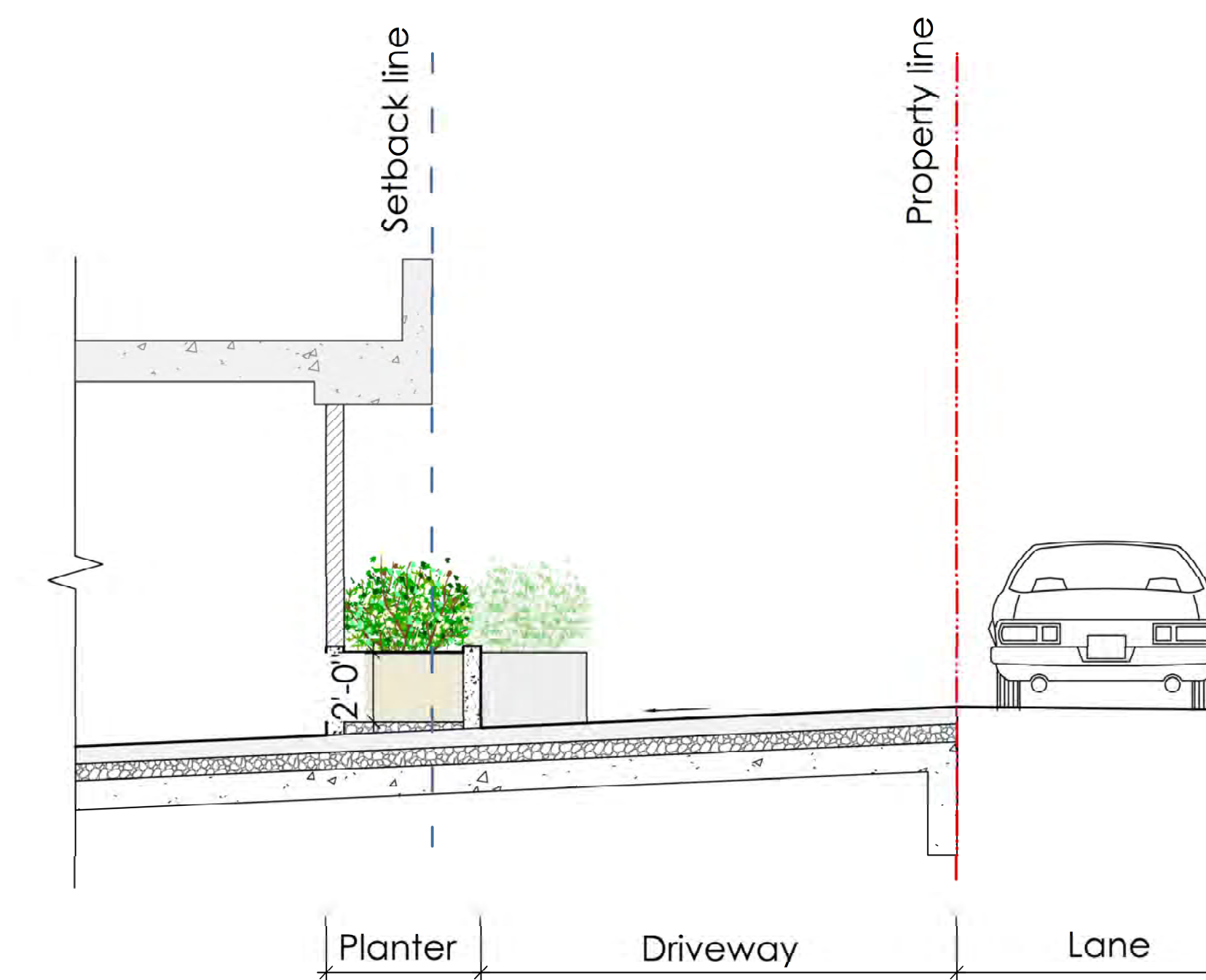
D Bus shelter and planting area
L1.1 Scale: 1/4" = 1'-0"



E Boulevard planting and sidewalk
L1.1 Scale: 1/4" = 1'-0"



F Corner plazas
L1.1 Scale: 1/8" = 1'-0"



G Southern parkade entrance
L1.1 Scale: 1/4" = 1'-0"



01 Nov 23-21 Issued for Rezoning
no. date: items:
Revision:
dk DURANTE KREJUK LTD.
102 - 1637 West 5th Avenue
Vancouver B.C. V6J 1N5
P:604.684.4611
F:604.684.0577
www.dk.bc.ca

Project:

880 west 15th street
North vancouver
Jadasi Development

Draw by: AL
Check by: PK
Date: Nov 08, 2021
Scale: As shown
Drawing Title:

Landscape Section

Project No.:
21022
Sheet No.:

L 2.1