

# LYNNMOUTH PARK

## DOG OFF-LEASH AREAS



### PHASE 1

#### LYNN CREEK HABITAT RESTORATION

- Re-established stream-side habitat by planting native trees and shrubs with habitat fencing along the west bank of Lynn creek.
- Established formal access points to Lynn creek.

### PHASE 2

#### FORMALIZE OFF-LEASH AREAS

- Trail improvements and formalizing off-leash areas in preparation for the Spirit Trail connection north into Bridgman Park in the District of North Vancouver, and a future bicycle and pedestrian bridge across Lynn Creek.
- As in Bridgman Park, on-leash dogs are permitted on the Spirit Trail and there is a need to define the on-leash and off-leash areas in Lynnmouth Park to ensure the safety and comfort of all park users.
- The proposed plan includes large fenced off-leash areas that will provide safe and secure locations for dogs to get exercise while protecting the environment, and allows other user groups to enjoy the multi-use path and park.
- The Lynnmouth Park design has been created to include park entrance improvements, dog area amenities, and trail and drainage upgrades.

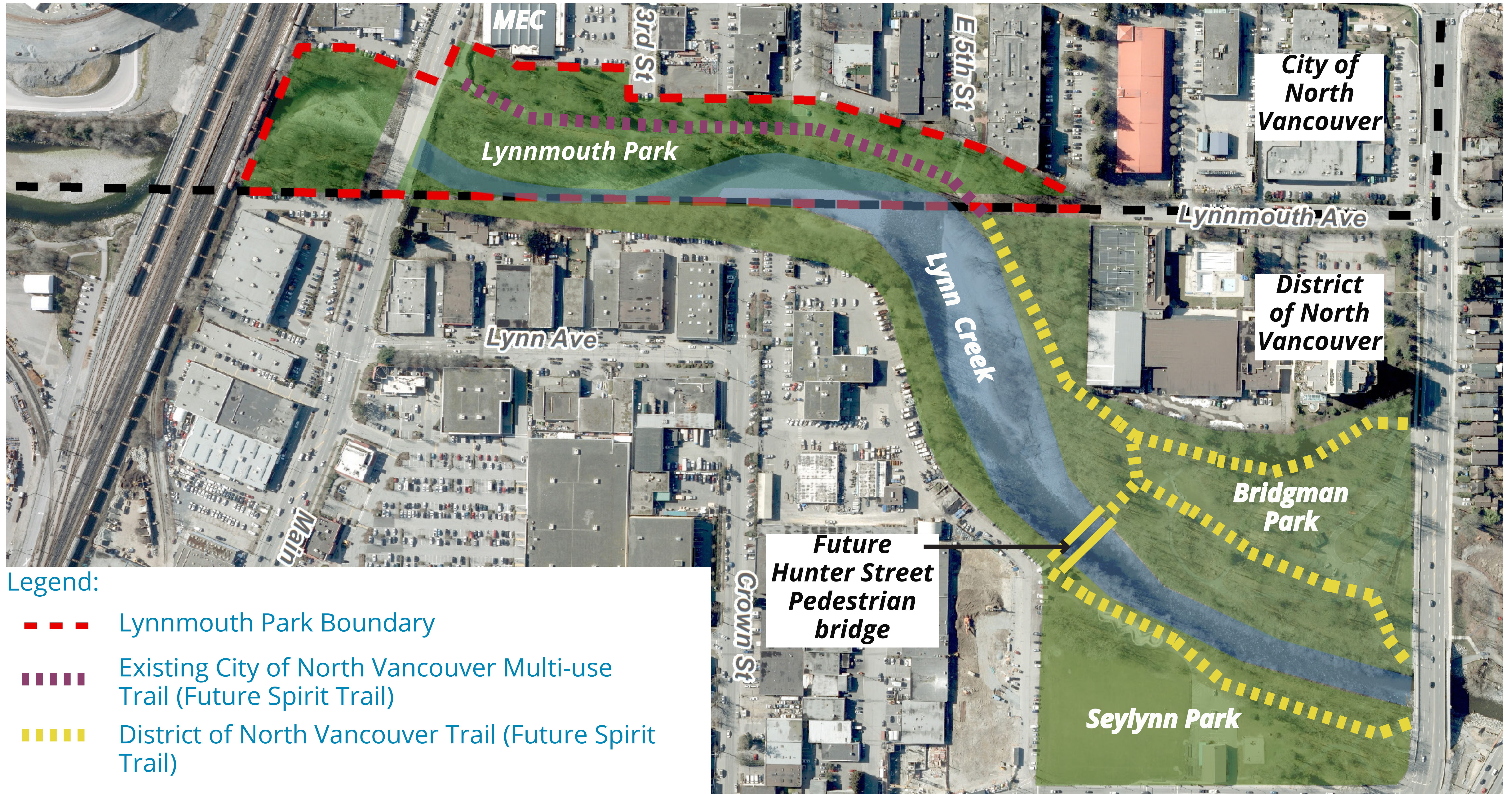
#### Goals for the Project

- Share the proposed design and features for the dog off-leash areas
- Receive input from the public








# Existing Site

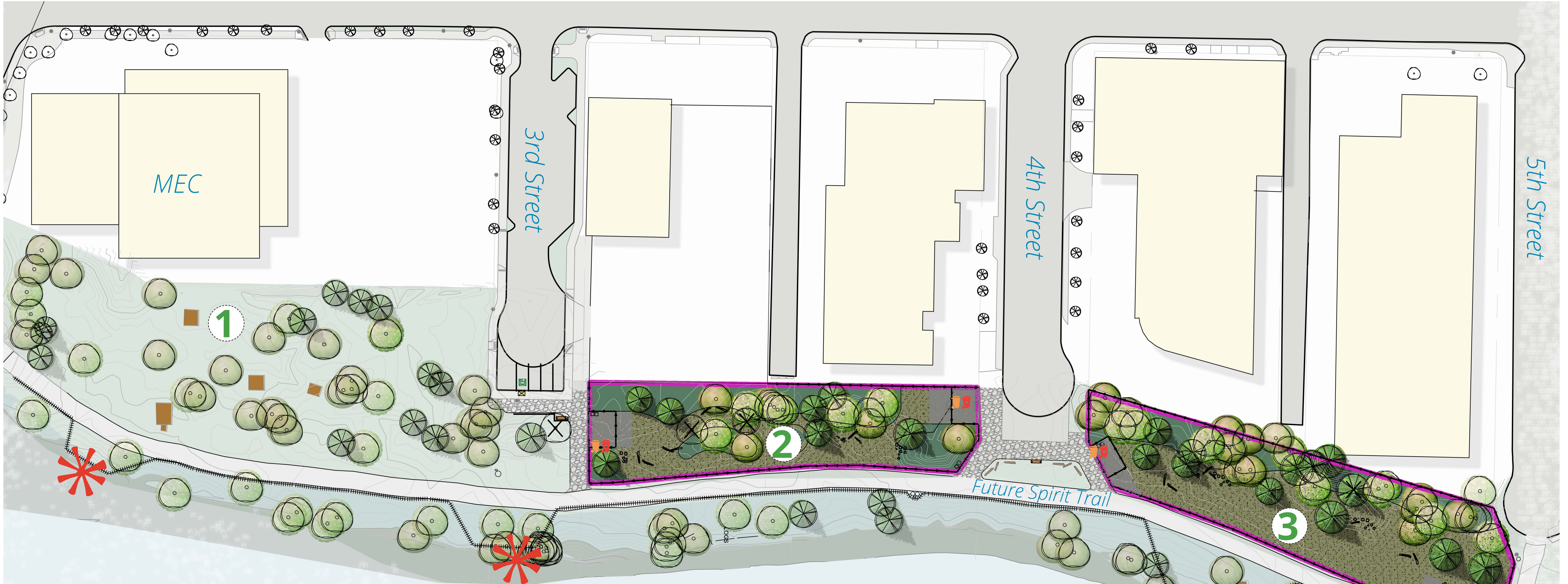


## Legend:

-  Lynnmouth Park Boundary
-  Existing City of North Vancouver Multi-use Trail (Future Spirit Trail)
-  District of North Vancouver Trail (Future Spirit Trail)







# Proposed Concept Plan



**LEGEND:**

- 1** Open space and picnic sites. On leash area.
- 2** Fenced off-leash 'Area A'  
(1600 square meters or 17200 square feet)
- 3** Fenced off-leash 'Area B'  
(2440 square meters or 26260 square feet)
- 4** Trail connection to District of North Vancouver Trails

-  Existing Wood Rail Fence
-  Access to Off-leash at Lynn Creek
-  Remove existing tree
-  Trash & dog waste receptacles



**WE WILL HAVE OVER 4040M<sup>2</sup> (43500 FT<sup>2</sup>) TO RUN FREE AND PLAY IN A SECURE AND SAFE PLACE!**

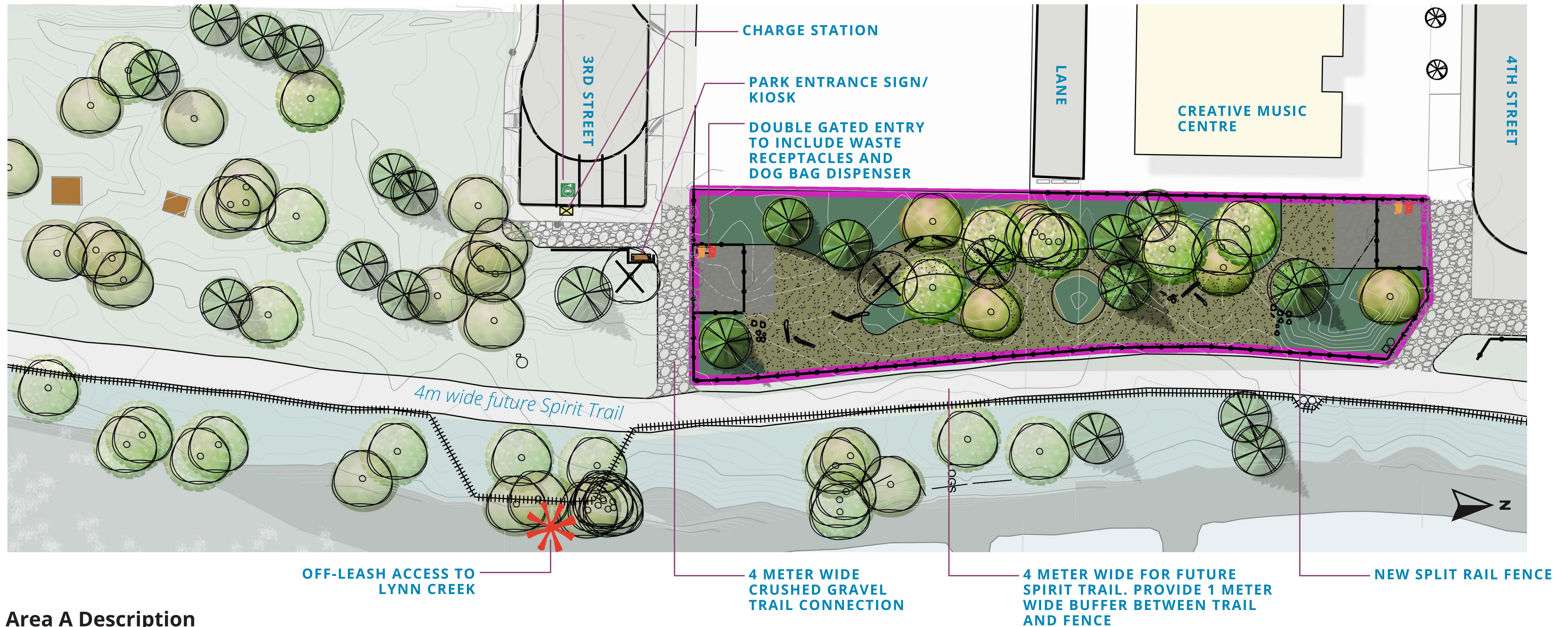


# Fenced off-leash Area A

BETWEEN 3RD AND 4TH STREET

LEGEND:

-  OFF-LEASH GRASS OPEN SPACE AREAS
-  FINE CRUSHED GRAVEL
-  REMOVE EXISTING TREE
-  OFF-LEASH ACCESS TO LYNN CREEK



## Area A Description

Off-leash area 'A' provides **1600 square meters or 17,200 square feet** of fenced in area for dogs to run, walk, catch a ball traverse the agility logs and stumps. The landscape also includes existing small mounds for additional play value. Trees will be limbed up to provide safety and site lines.

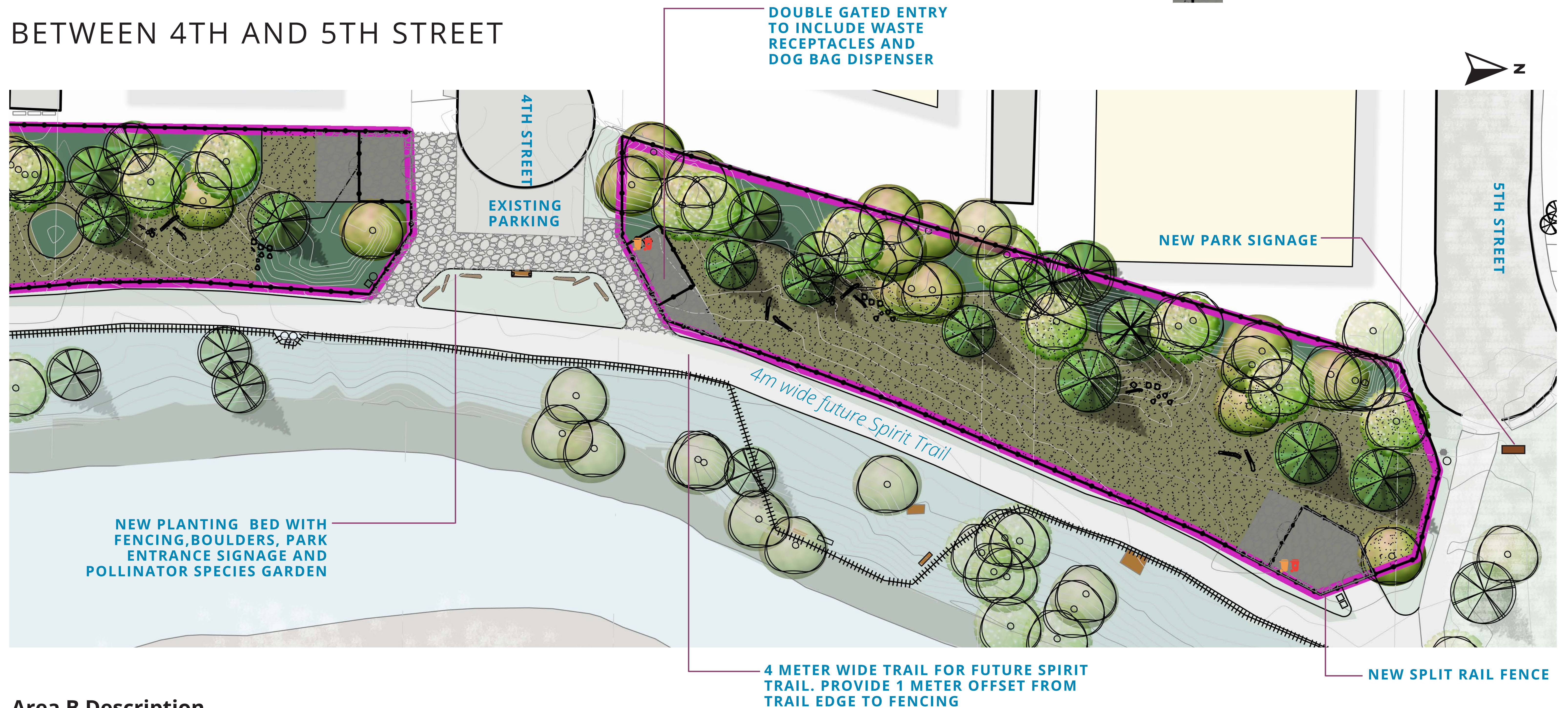


# Fenced off-leash Area B

BETWEEN 4TH AND 5TH STREET

LEGEND:

-  OFF-LEASH GRASS OPEN SPACE AREAS
-  FINE CRUSHED GRAVEL



## Area B Description

Off-leash area 'B' is a larger space at **2400 square meters or 26,260 square feet** of fenced in area for dogs to run, walk, catch a ball traverse the agility logs and stumps. The landscape in this area has more open flat spaces for owners and dogs to play. Trees will be limbed up to provide safety and site lines.



# Planting Strategy

THE CITY WILL WORK WITH COMMUNITY FOREST STEWARDSHIP GROUPS TO CONTINUE HABITAT RESTORATION AT LYNNMOUTH PARK. THE STRATEGY INCLUDES...



**Invasive removal program**



**Increase native understory planting**



**Repair soil compaction and drainage**



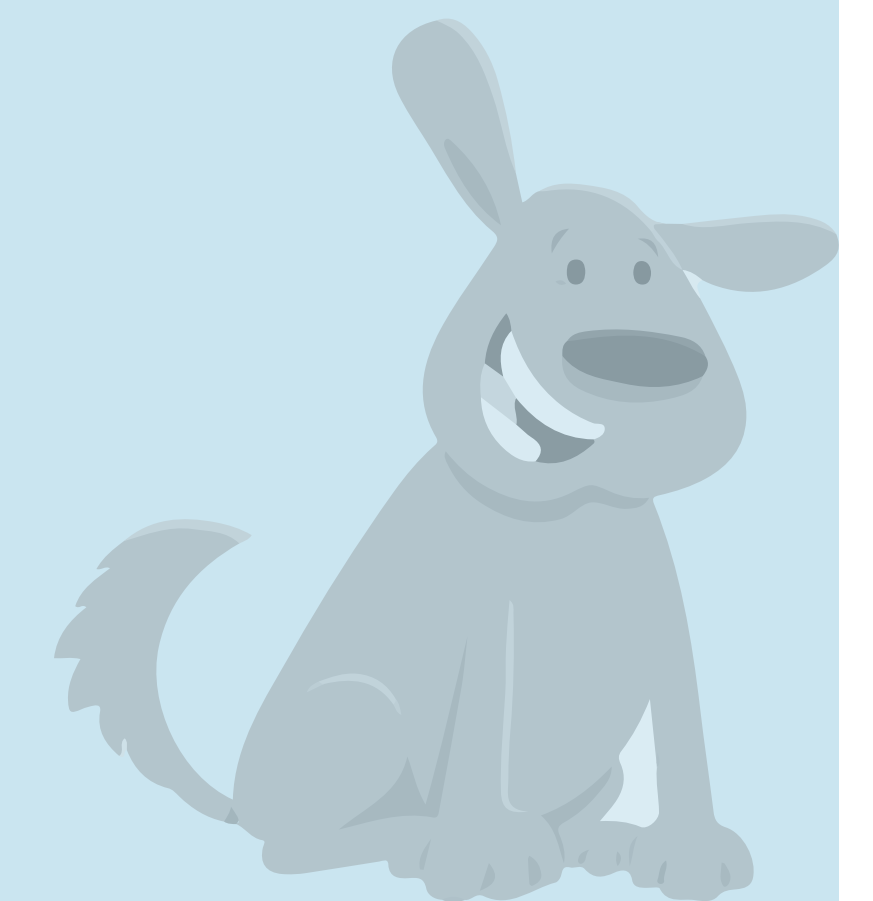
**Create native planting beds including pollinator species at park entrances**



**'Limb up' existing trees within dog off-leash areas for improved sight lines**

Please tell us your comments about the proposed **planting strategy**?

**Place a sticky note here!**





# Off-leash Areas Design Features

THE BELOW DEPICTS THE MATERIALS AND OFF-LEASH DOG FEATURES WE ARE CONSIDERING AT LYNNMOUTH PARK OFF-LEASH AREAS.



Double gate- post and rail with welded wire mesh



1.2 meter tall split rail fence



Logs and stumps for dog area agility and play



Natural turf in select areas



Fine crushed gravel in areas prone to high use



Seating



Log seating



Picnic tables inside off-leash areas

Please tell us your comments about the proposed **off-leash area design elements?**

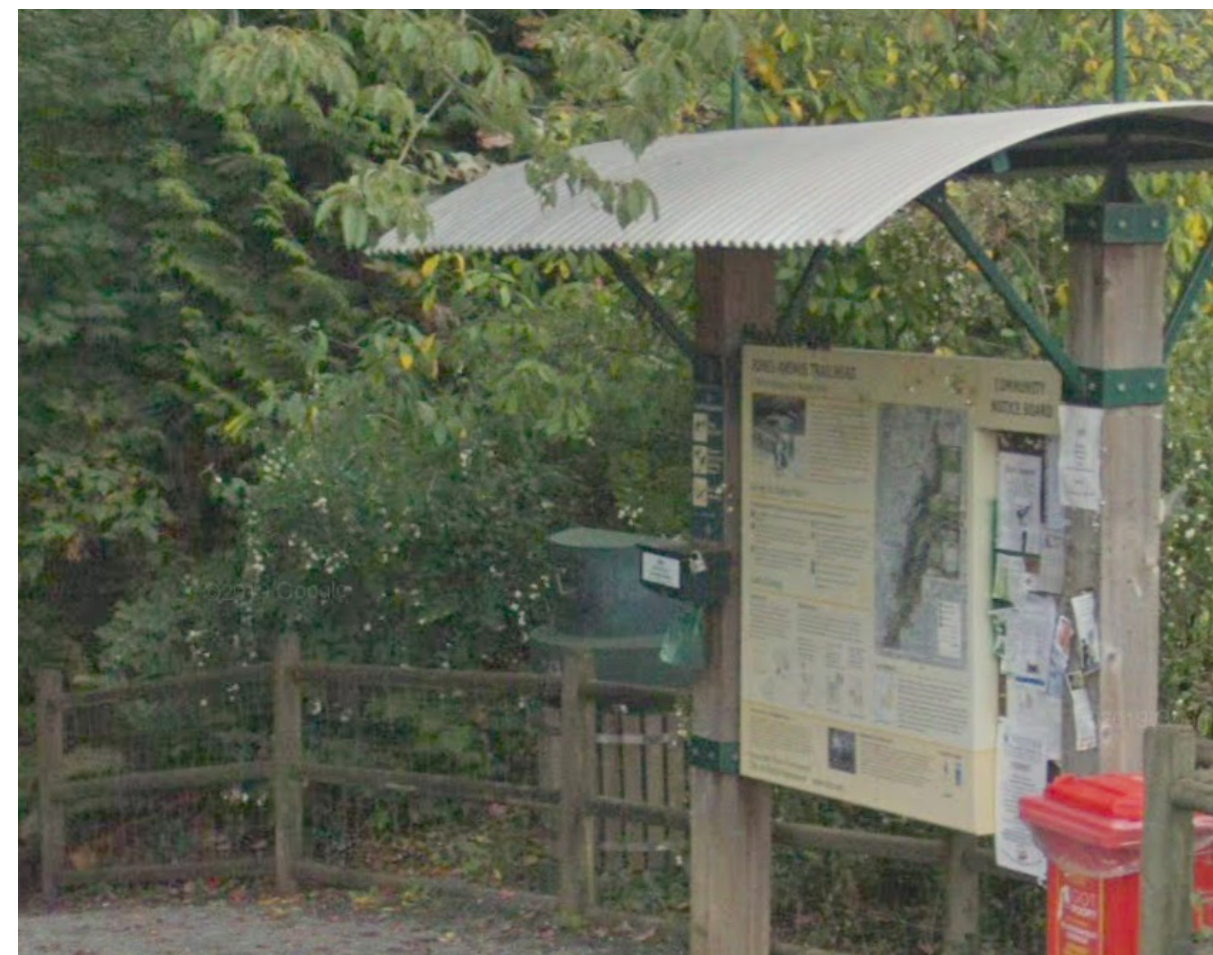
**Place a sticky note here!**





# Signage and Waste Management Strategy

ESTABLISHING GUIDELINES ON ETIQUETTE IN OFF-LEASH AREAS IS IMPORTANT FOR ALL USERS TO ENJOY LYNNMOUTH PARK.



Main welcome to off leash Park signage



Site signage placed at street entrances.



Wayfinding signage example



Dog area etiquette and bylaws



Poo fairy signage placed in leash on areas and at key locations



Dog waste bins at every gated entrance to the off-leash areas



Dog bag dispensers



Potential to include separate fenced in area for small dogs



Electric vehicle charger Example

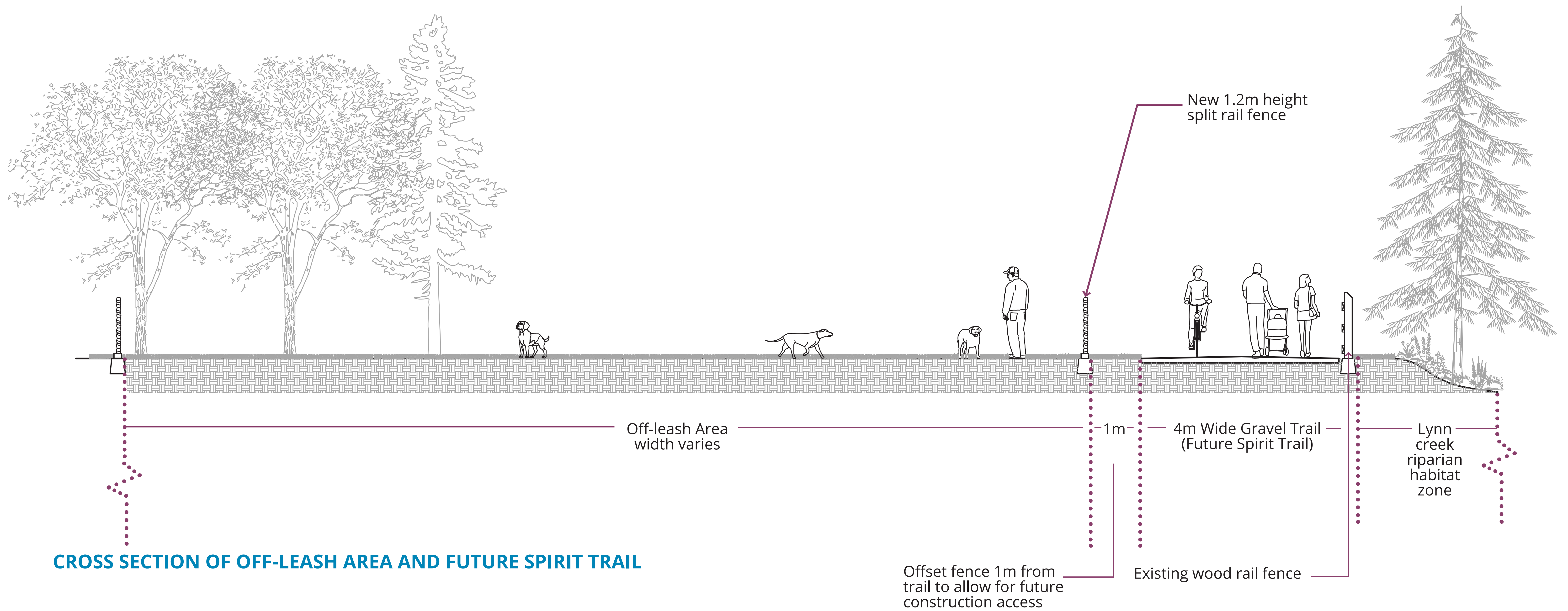


Electric vehicle parking stall example

As part of the City's strategic plan in sustainability, the City will provide 1 parking electric vehicle stall with a charging station at the termination of 3rd Street.



# Park Design Elements



CROSS SECTION OF OFF-LEASH AREA AND FUTURE SPIRIT TRAIL



# Next steps

**Thank you for  
your feedback**

## PROJECT TIMELINE

