

# WELCOME

## St. Andrew's Park Study - Open House

### What is the purpose of this event?

St. Andrew's Park has become an integral part of a large community in North Vancouver. Due to this high level of use, the City is conducting this Park Use Study to listen to your thoughts or concerns on the current state of the park. The results of this exploration will assist in our evaluation of options to maintain this much loved park!

### Please have your say!

We anticipate hearing a lot of praise, critiques, and questions regarding this park. We want to hear them all!

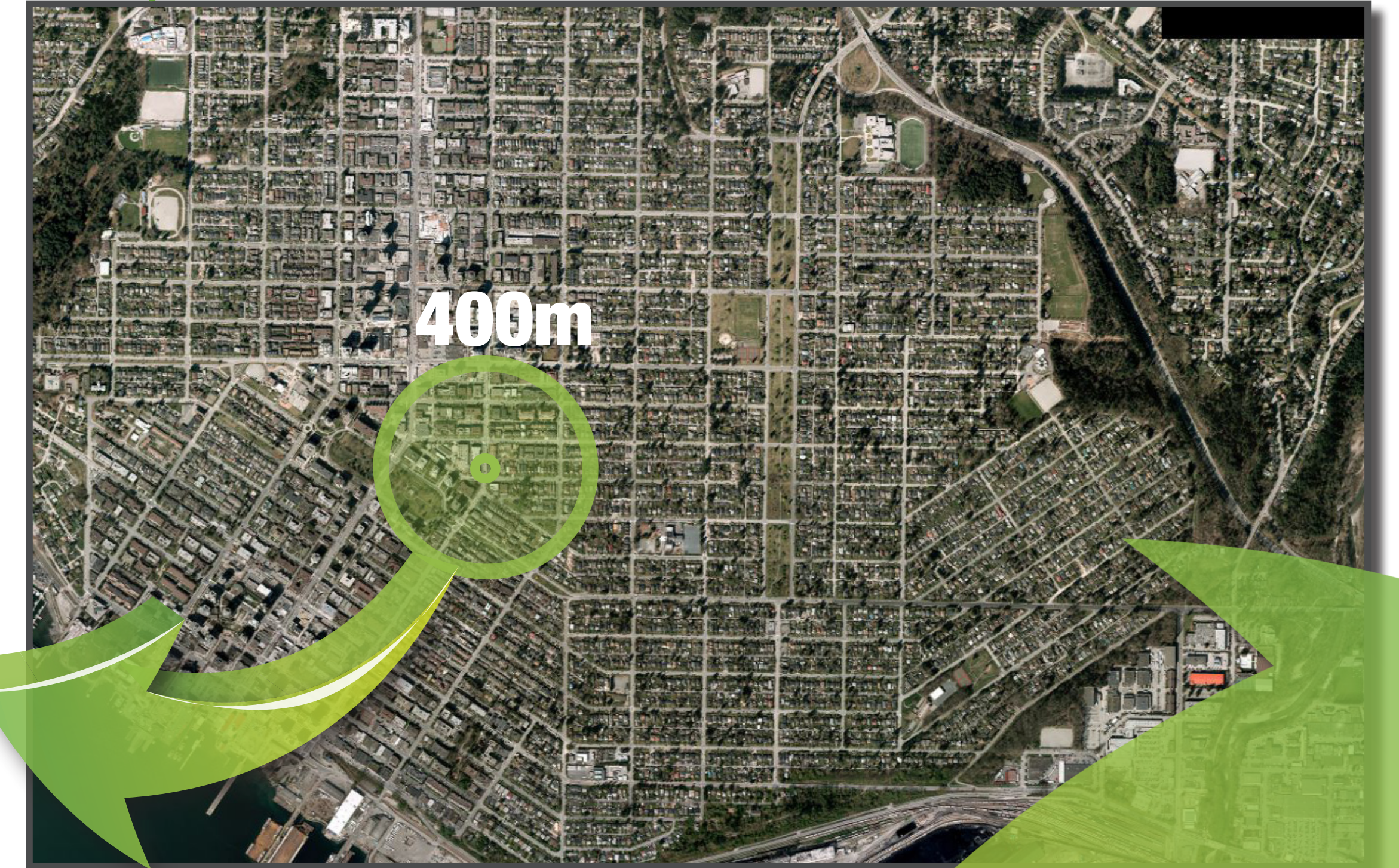
### What is the scope of the study?

This study will not result in a major re-design of the park, as we think it's a pretty great space! It is primarily to see what is working and what could be improved. We will take our evaluation of the feedback for the possible small improvements to Council. We will use the feedback to evaluate and prioritize small park improvements that can be included in the City's Project Plan.

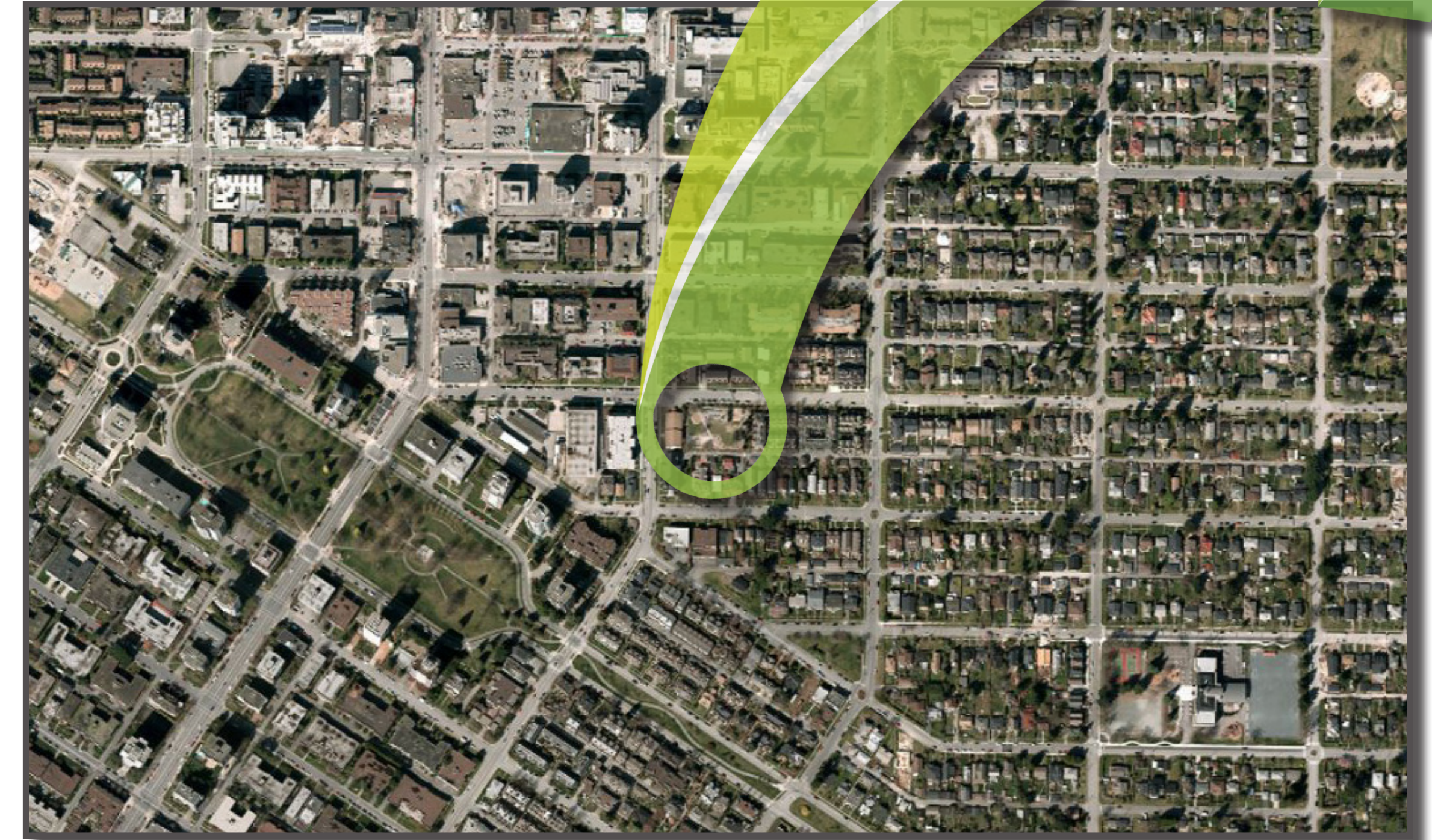
#### The Park in Our City

St. Andrew's is classified as a 'Neighbourhood Park' by the Parks Master Plan (2010). Shown is the 400m catchment area for the park, which is meant to demonstrate the zone of easy walking distance for the surrounding community.

The City of North Vancouver



The Neighbouring Community



#### The Park in Our City

While St. Andrew's is classified as a 'Neighbourhood Park', due to its unique character, it has been serving a much larger area than was originally anticipated.



# ST. ANDREW'S CONTEXT



St. Andrew's Today

2001



In 2001, City Council approved a budget to redesign St. Andrew's Park. Through numerous consultations with stakeholders, the City was inspired to create a unique play experience by designing 'rooms' that could serve different age groups and experiences simultaneously. As well, this park was one of the first in the area to combine environmental education and play. This provided the impetus for many other parks, boulevards, and gardens that inspire environmental stewardship throughout the City

## The Grand Opening

Summer 2002





# KEY SUCCESSES

## Our Award-Winning Park!

St. Andrew's Park won the 'Canadian Society of Landscape Architects Regional Honour Award' for 2003



*"This project is locally significant as it reintroduces a diversity of outdoor experiences to the neighbourhood."*

*It demonstrates to a rapidly redeveloping region that the detail, texture, mystery, and the wilderness of spaces is very much in context with dense, urban living.*

*The project provides opportunities to reconnect with the natural elements and processes that are often hidden and disrupted in the urban landscape"*

*- City of North Vancouver,  
Parks Master Plan*

### Quotes from Park Users:

*"How could you improve this park? It's the best park in the City!"*

*"It's such a great location in the neighbourhood, easy to walk from the homes around and right next to the schools"*

*"I love that the park is fenced off, but there's no dogs to worry about"*

*"This park is always chock full of happy kids on a nice day!"*

*"Not a lot of playgrounds have bushes and trees anymore. It's nice that they can have a bit of nature with the playground equipment"*

*"The best part about the playground is the paths that take you from place to place. Sometimes my kids play more on those paths!"*

*"The sand and water play is a huge draw, my kids play there for hours on end and make lots of friends"*



# A DAY IN THE PARK

## How do you use the park?

Please put three (3) dots in the areas of the park where you prefer to spend your time (children 1 to 5 - blue, children 6 to 12 - green, youth 13 to 18 - purple, caregivers/others - red):



Comments or Concerns? Please tell us!



# POTENTIAL RENEWALS

## Ideas to move forward

We have identified some possible small projects to help maintain play value and overall park experience. We would like your feedback on these suggestions:



Toys left in the park create a fun play experience; though some believe they are messy, and if the toys are broken, then they are unsafe. Currently, City Staff will discard broken toys, and will tidy up toys at the end of the day. Do you have a suggestion or comments as to how to work with these toys?



**Ideas**

- 1) Create a 'Parking Lot' for movable toys (see example);
- 2) Build a 'Toy Box' that park users can deposit and pick up toys from;
- 3) Retrofit existing sandbox for toys and storage.

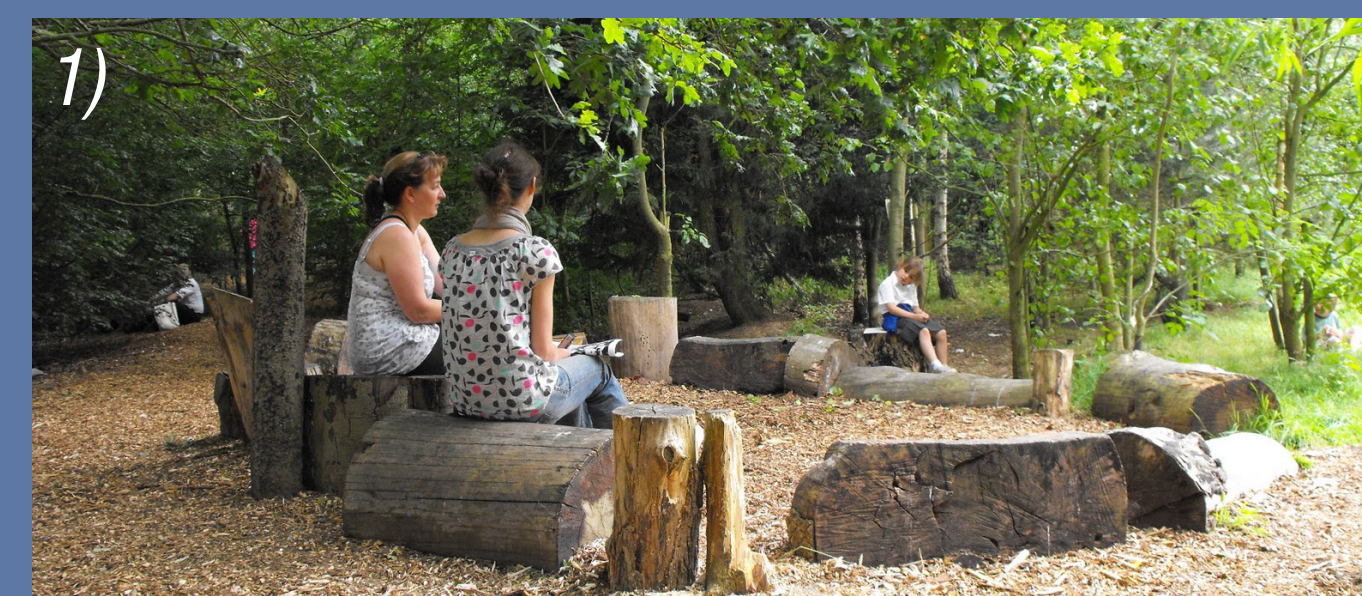
Loose Toys

Some original seating areas in the park have been removed over time. The existing seating areas are very popular with park users. Do you think there should be more seating areas designed in the park?

### Ideas

- 1) Use natural materials, and make a circular arrangement to foster group conversation;
- 2) Reinstall a seating area similar to the original bench/table combination;
- 3) Add a picnic table area for adults to relax.

Seating Areas



Washrooms



Park washrooms are generally not provided in 'Neighbourhood' parks. Funding for a small washroom has been included in the City's current 10-year Project Plan. Until then, the City has committed to maintaining the portable washroom that now serves the park. What are your concerns regarding the washrooms?



# POTENTIAL RENEWALS

## Ideas to move forward

We have identified some possible small projects to help maintain play value and overall park experience. We would like your feedback on these suggestions:



Due to the high use of the park, the turf slope is a challenge to maintain. Open, flexible spaces are always valuable in parks. Are there different options for the grassy hill?

### Ideas

- 1) Use the hill to create an 'earth slide' and include a grass stabilizer;
- 2) Use boulders to create a 'scramble hill';
- 3) Create an amphitheatre with seating that can also be used for play;
- 4) Install poured-in-place rubber in place of grass.



Grass Hill

Play Equipment Diversity

St. Andrew's Park was designed to cater to and provide challenges for children of all ages and abilities. The play equipment was selected with this in mind, to provide a unique play experience for children from ages 2-12, in group or solitary play. Please let us know if you have any comments or concerns with the existing play equipment in the park.



### Ideas

- 1) Replace with a climbing structure, which would be unique to the City;
- 2) Replace with a 'Natural' style of structure.



- Shrub & Tree Planting
- Surfacing (gravel, sand, rubber)
- Wooden Boardwalk
- Turf Areas

Other

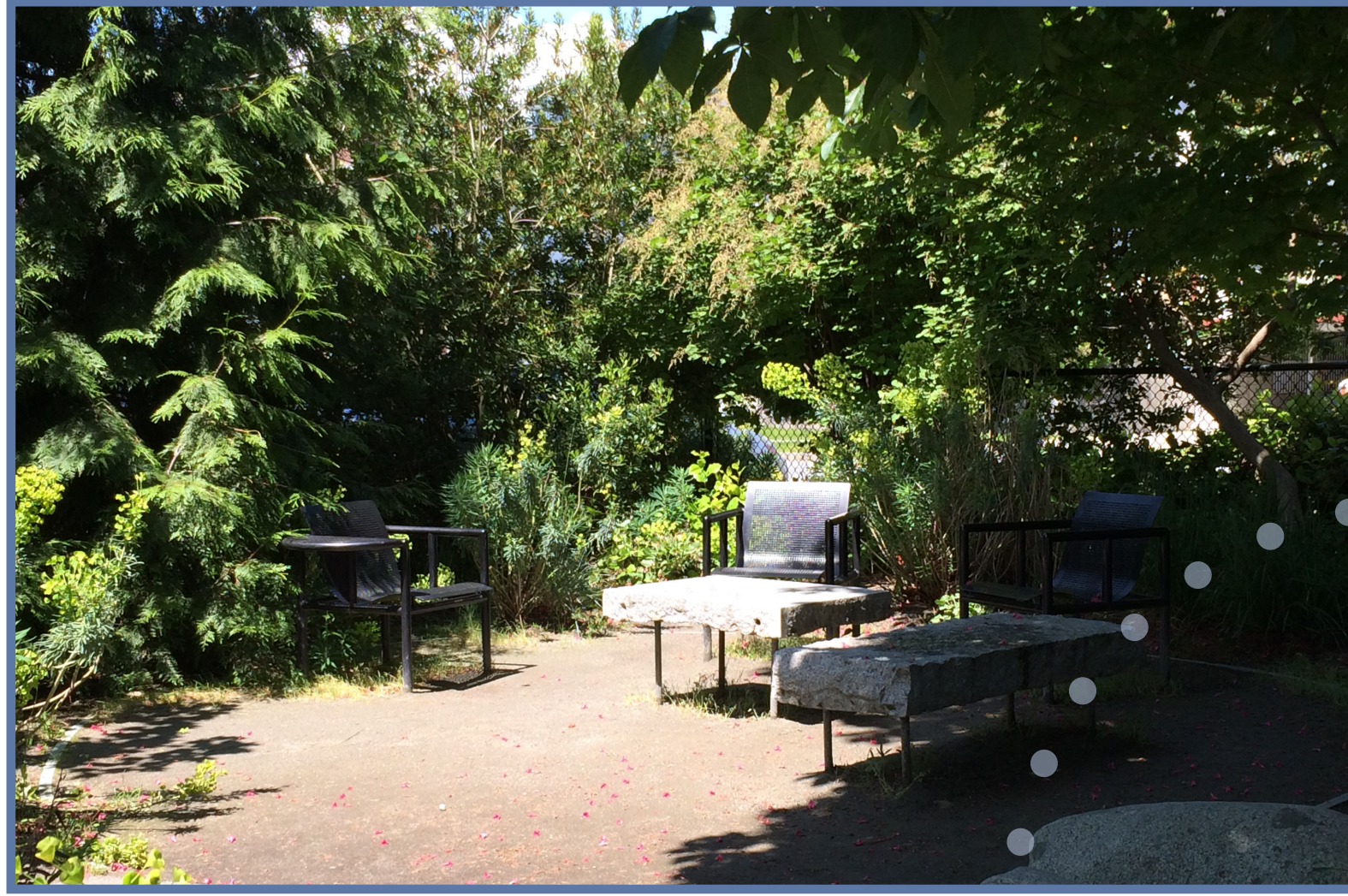
Do you have any other ideas? Please let us know!



# CREATE YOUR OWN CAPTIONS!

## What is an ideal day in the park for you?

*Please write your thoughts around the photos below:*





# MOVING FORWARD...

## What will happen after this Open House?

THANK YOU  
FOR  
PARTICIPATING!



### SUMMER 2014:

*Parks staff will compile the results of the Open House and questionnaires, and will post on the webpage. We will then prepare a budget for the high priority items, and present to City Council for consideration as part of the 10-year Project Plan.*

### NEXT STEPS:

- *Council will review proposed project plan and provide direction to staff ;*
- *If budget is approved, staff will devise a phased plan, and will report back to Council;*
- *A detailed design and construction will follow for the first phase, without a full closure of the park.*

### STAY IN THE LOOP!

*Please continue to refer to [www.cnv.org/StAndrewsPark](http://www.cnv.org/StAndrewsPark) for Open House outcomes and project updates. You can also contact Jessica Oakes, Landscape Design Technician by email: [joakes@cnv.org](mailto:joakes@cnv.org) or by phone: 604-982-3969.*



# YOUR INPUT

**Please write or draw further suggestions here!**

---

