

Development of Cloverley Neighbourhood Traffic Management Plan: Ideas from Public Workshop #1 (July 5, 2016)



Contents: photos of the original plans developed by workshop participants and maps the plans redrawn by City staff to improve readability

Photo of Group #1's Plan



Group #1's Plan, Redrawn



Legend



-  Semi-diverter
-  Traffic diverter

Photo of Group #2's Plan



Group #2's Plan, Redrawn



Legend

-  Semi-diverter
-  Traffic diverter
-  Speed bump / hump
-  Right-in, right-out diverter
-  Traffic circle

Photo of Group #3's Plan



Group #3's Plan, Redrawn



Barriers to force vehicles turning right onto Keith to have to turn right again onto Brooksbank

Sign for eastbound vehicles:
No Left Turn (onto Queensbury)
3-6pm, Mon-Fri

Legend

- ▬ Median island / traffic diverter
- ▬ Speed bump
- Traffic circle

Other Suggestions Noted by Group but Not Drawn on Map

- Speed bumps in all laneways
- Dead end 5th / 6th

Photo of Group #4's Plan

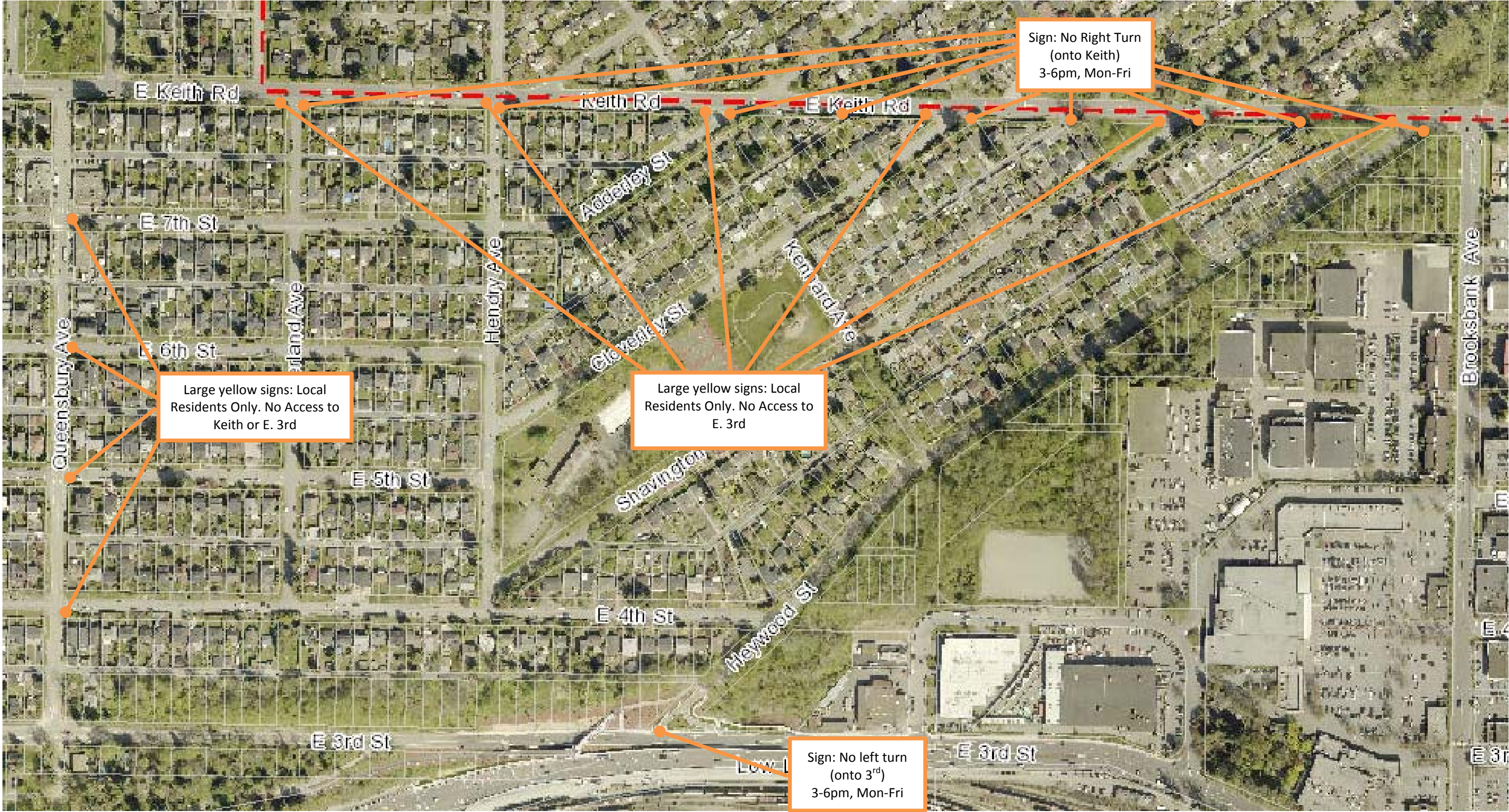


Handwritten notes:

- 1) Add signage - local traffic only on all access routes
- 2) Create ways with cut-de-mees or one way systems on affected areas
- 3) Speed bumps only work if there are many on the same block & create a real speed bump
- 4) POSSIBLE One way street - make it the West bound from Haywood to Highway/Overlandway
- 5) No right turns from Adley, Clavely, Sherington, Haywood on to Keith between 3pm & 6pm and at Hendry, Overland and from laneway

No left turn from Haywood on to 3rd Street between 3 - 6pm

Group #4's Plan, Redrawn



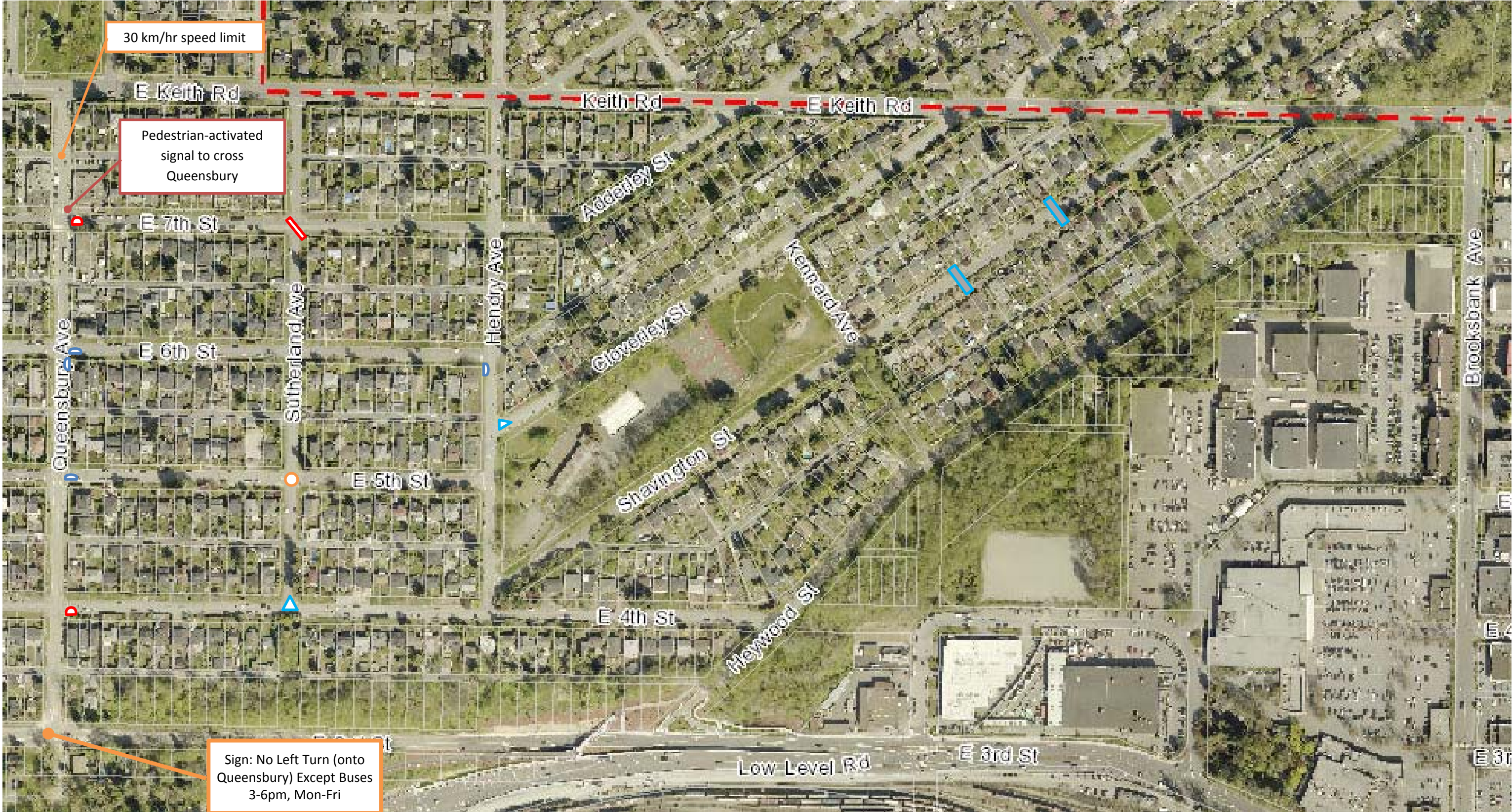
Other Suggestions Noted but Not Drawn on Map

- Synchronize lights on 3rd and Main St
- Play police to patrol and ticket those who do not follow the turn restriction signs
- Create maze with cul-de-sacs and one way systems in affected area
- Speed bumps/humps if implemented in a series
- Possible: Make 4th Street one-way westbound, from Heywood to Queensbury

Photo of Group #5's Plan



Group #5's Plan, Redrawn



Legend

-  Semi-diverter
-  Traffic diverter
-  Speed hump
-  Right-in, right-out diverter
-  Traffic circle
-  Curb extension


Photo of Group #6's Plan



Group #6's Plan, Redrawn



Legend

-  Semi-diverter
-  Right-in, right-out diverter
-  Speed bump
-  Traffic circle
-  Signage (unspecified)