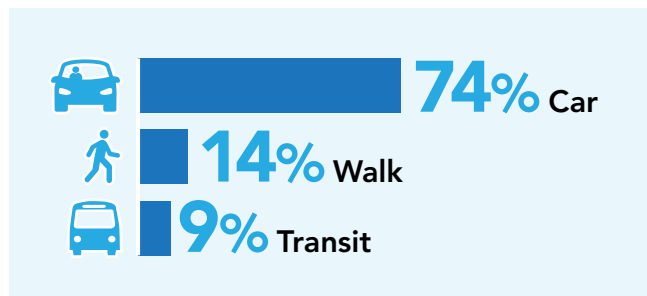


# 2023 NORTH SHORE Transportation Study

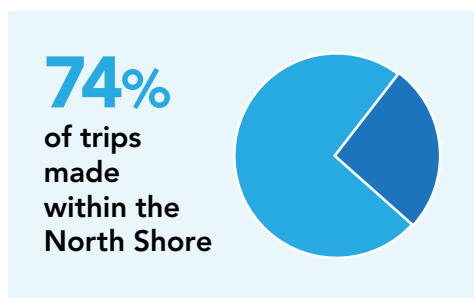
## Trip Frequency



## TOP 3 Mode Share



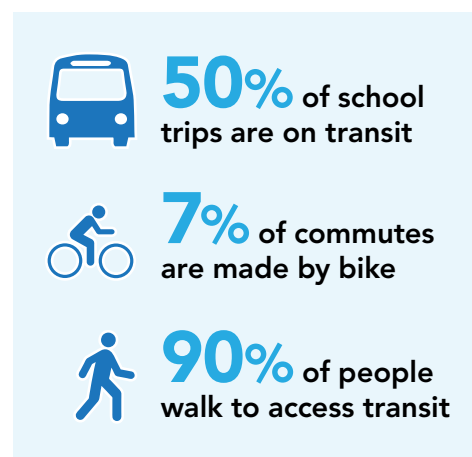
## Trip Destination



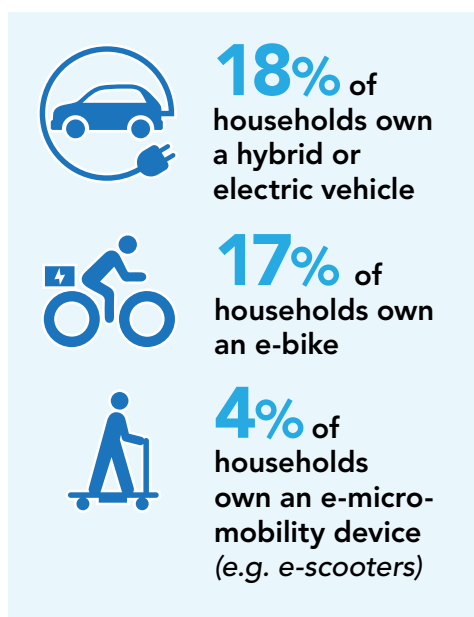
## TOP 3 Trip Purposes



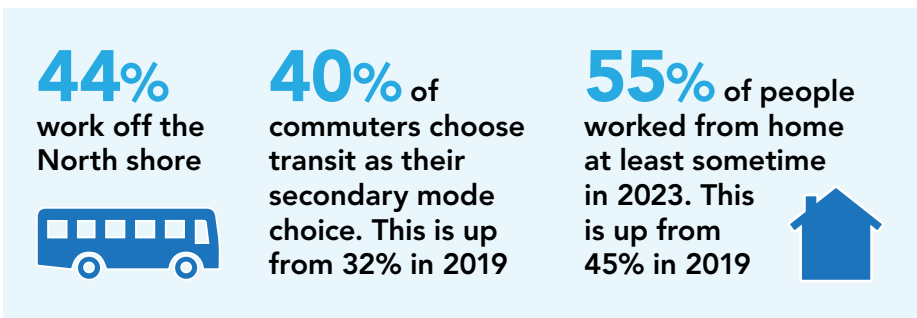
## Mode Share by Trip Purpose



## Electric Mobility Ownership



## Commute to work



The survey is undertaken every 2 years since 2019 and provide north shore staff with travel behaviours and perceptions, to support municipal and regional decision making. The 2023 NSTS was conducted with 2,380 residents, for a sampling rate of 2.9% of households or 1.4% of the population